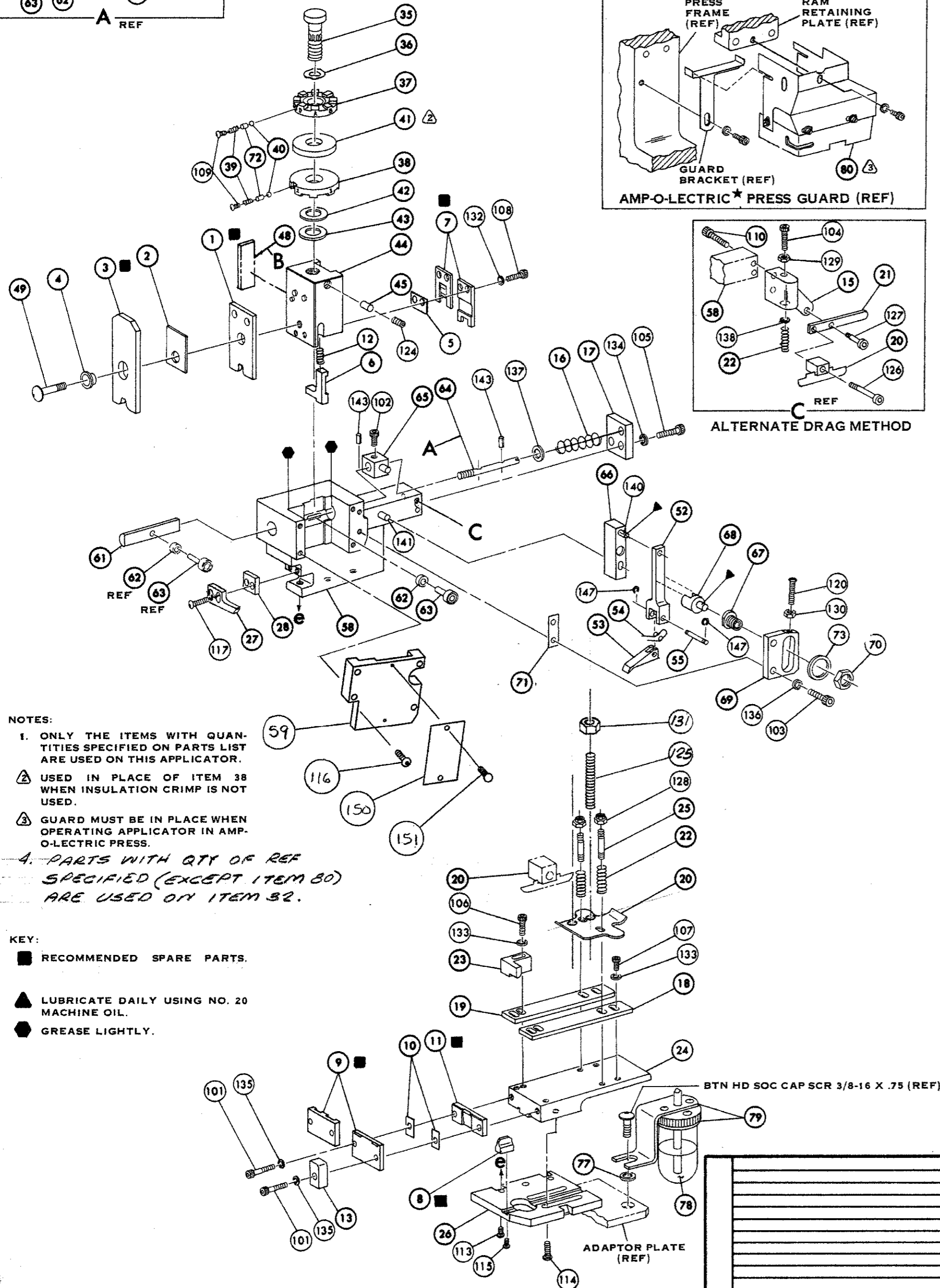
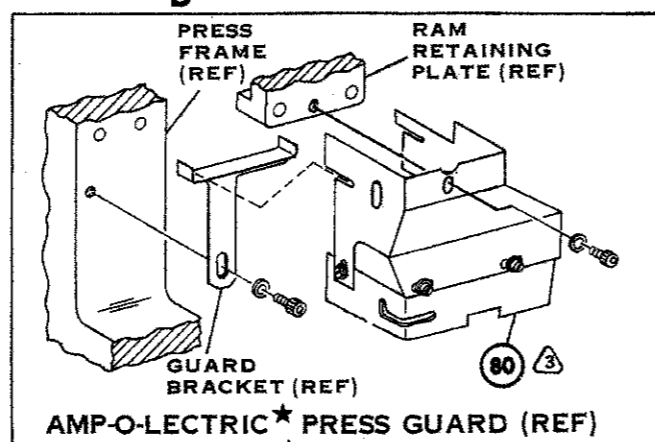
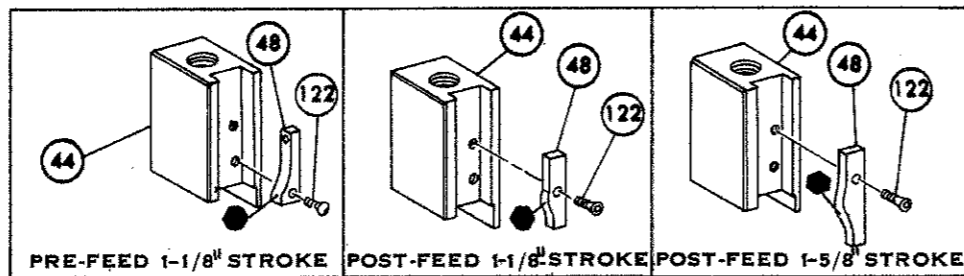
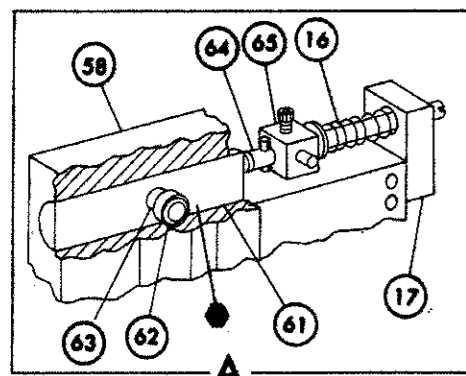


THIS IS A CONTROLLED DOCUMENT.



- NOTES:
- ONLY THE ITEMS WITH QUANTITIES SPECIFIED ON PARTS LIST ARE USED ON THIS APPLICATOR.
 - USED IN PLACE OF ITEM 38 WHEN INSULATION CRIMP IS NOT USED.
 - GUARD MUST BE IN PLACE WHEN OPERATING APPLICATOR IN AMP-O-LECTRIC PRESS.
 - PARTS WITH QTY OF REF SPECIFIED (EXCEPT ITEM 80) ARE USED ON ITEM 32.

- KEY:
- RECOMMENDED SPARE PARTS.
 - LUBRICATE DAILY USING NO. 20 MACHINE OIL.
 - GREASE LIGHTLY.

REQ.	PART NO.	DESCRIPTION	NO.	REQ.	PART NO.	DESCRIPTION	NO.
	162	REF	690517-1			SPACER	71
	161		22594-8			HEX. NUT	70
	160		240628-1			PLATE, ADJ	69
	159		240626-1			SHAFT, PIVOT	68
	158		240633-1			BUSHING	67
	157		455680-1			LEVER, INTERMEDIATE	66
	156		240629-1			BLOCK, PIVOT	65
	155		240632-2			SCREW, ADJ	64
	154		240659-3			PIN, CAM ROLLER	63
	153		240658-1			CAM, ROLLER	62
	152	REF	454398-1			ROD, FEED	61
	151						60
	150	REF	454220-1			CAP, RAM	59
	149	REF	453736-1			HOUSING	58
	148						57
	147						56
	146	REF	240624-1			PIN, FEED FINGER	55
	145	REF	691999-1			SPRING, FEED FINGER	54
	144	REF	840635-1			FINGER, FEED	53
	143	REF	240634-1			LEVER, TERMINAL	52
	142						51
	141						50
REF	21045-3					RING, RETAINING 'C' (.187 DIA) FEED PIN	49
							48
							47
							46
							45
							44
							43
							42
							41
							40
							39
							38
							37
							36
							35
							34
							33
							32
							31
							30
							29
							28
							27
							26
							25
							24
							23
							22
							21
							20
							19
							18
							17
							16
							15
							14
							13
							12
							11
							10
							9
							8
							7
							6
							5
							4
							3
							2
							1
REF	458109-1					WASHER, FLAT (SPECIAL)	
2	690603-1					SPRING, ASSIST	

TERM APPL SPEC 114-2080

CRIMPING DATA				THIS APPLICATOR WILL APPLY
PAD LETTER	CRIMP HEIGHT	WIRE SIZE	WIRE STRIP LENGTH	42101
A	.068	#16		
B	.060	#18		
C	NOT USED			
D	NOT USED			
CRIMP SIZE	TYPE	FEED	PRESS REF.	
WIRE .080	F			
INSULATION .140	0	.625	565435-5	
INSULATION RANGE .090-.120	WIRE RANGE 18-16	APPLICATOR INSTRUCTION #8039		

REMARKS
AMP-O-LECTRIC
PRE FEED

FILED 0150-0042-05	DATE 1-05	BY 11/19/73	APPROVED 11-27-73	LOC A	NO. 687963-2	REV. F1
E 0150-6987-96	DATE 1-05	BY 11/23/73	APPROVED 11-27-73	LOC A	NO. 687963-2	REV. F1
D 0150-6703-96	DATE 1-05	BY 11/23/73	APPROVED 11-27-73	LOC A	NO. 687963-2	REV. F1
C 0150-6604-96	DATE 1-05	BY 11/23/73	APPROVED 11-27-73	LOC A	NO. 687963-2	REV. F1
B 0150-6505-96	DATE 1-05	BY 11/23/73	APPROVED 11-27-73	LOC A	NO. 687963-2	REV. F1
A 0150-6406-96	DATE 1-05	BY 11/23/73	APPROVED 11-27-73	LOC A	NO. 687963-2	REV. F1

SCALE NONE

MINIATURE QUICK CHANGE APPLICATOR
END-FEED (PIN RECEPTACLE)

CUSTOMER AND ASSEMBLY DRAWING

687963-2

THIS DRAWING IS UNPUBLISHED. ALL RIGHTS RESERVED. BY AMP INCORPORATED. COPYRIGHT 1969.