



# *SAW Components*

*Data Sheet K 6265 K*

Data Sheet

A large, stylized, 3D-rendered graphic of the EPCOS logo. The word "EPCOS" is written in a bold, sans-serif font, with the letters appearing to be part of a curved, metallic-looking structure. The background is dark and textured, suggesting a circuit board or a similar technical surface.



**SAW Components**

**K 6265 K**

**IF Filter for Intercarrier/Multistandard Applications**

**38,00 MHz**

**Data Sheet**

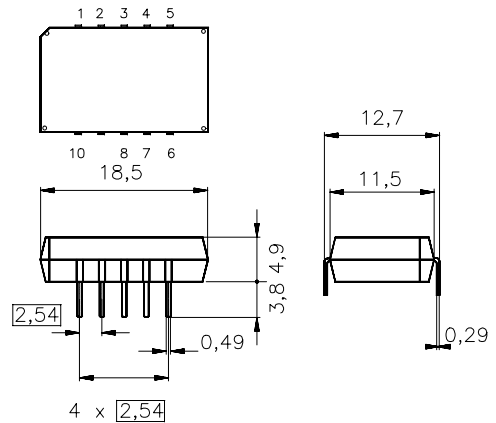
**Standard**

- B/G
- D/K
- M/N

**Features**

- TV IF filter switchable from M/N mode to D/K mode
- M/N mode with Nyquist slope and sound shelf at 33,50 MHz
- Constant group delay
- D/K mode with Nyquist slope and broad sound shelf for sound carriers at 31,50 MHz and 32,50 MHz
- Customized group delay predistortion

Plastic package **DIP10K**



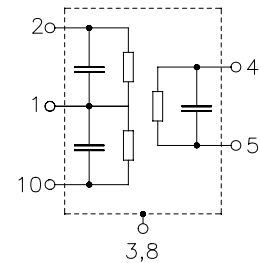
Dimensions in mm, approx. weight 1,8 g

**Terminals**

- Tinned CuFe alloy

**Pin configuration**

- 1 Input
- 2 Input - ground
- 3; 8 Chip carrier - ground
- 4; 5 Output
- 6; 7 Not connected
- 9 Free
- 10 Switching input



Type	Ordering code	Marking and package according to	Packing according to
K 6265 K	B39380-K6265-K100	C61157-A2-A3	F61074-V8068-Z000

**Maximum ratings**

Operable temperature range	$T_A$	-25/+65	°C	
Storage temperature range	$T_{stg}$	-40/+85	°C	
DC voltage	$V_{DC}$	12	V	between any terminals
AC voltage	$V_{pp}$	10	V	between any terminals



**SAW Components**

**K 6265 K**

**IF Filter for Intercarrier/Multistandard Applications**

**38,00 MHz**

**Data Sheet**

**Characteristics in M/N mode (switching input pin 10 connected to input pin 1)**

Reference temperature:  $T_A = 25\text{ °C}$   
 Terminating source impedance:  $Z_S = 50\ \Omega$   
 Terminating load impedance:  $Z_L = 2\text{ k}\Omega \parallel 3\text{ pF}$

		<b>min.</b>	<b>typ.</b>	<b>max.</b>	
<b>Insertion attenuation</b>					
	$\alpha$				
Reference level for the following data	36,50 MHz	14,4	15,9	17,4	dB
<b>Relative attenuation</b>					
	$\alpha_{rel}$				
Picture carrier	38,00 MHz	5,0	6,0	7,0	dB
Color carrier	34,42 MHz	4,6	5,6	6,6	dB
Sound carrier	33,50 MHz	20,0	22,0	24,0	dB
Adjacent picture carrier	32,00 MHz	37,0	43,0	—	dB
Adjacent sound carrier	39,50 MHz	46,0	60,0	—	dB
Lower sidelobe	25,00 ... 32,00 MHz	35,0	41,0	—	dB
Upper sidelobe	39,50 ... 45,00 MHz	38,0	45,0	—	dB
<b>Reflected wave signal suppression</b>					
1,2 $\mu$ s ... 6,0 $\mu$ s after main pulse (test pulse 250 ns, carrier frequency 36,50 MHz)		42,0	49,0	—	dB
<b>Feedthrough signal suppression</b>					
1,3 $\mu$ s ... 1,2 $\mu$ s before main pulse (test pulse 250 ns, carrier frequency 36,50 MHz)		—	56,0	—	dB
<b>Group delay ripple (p-p)</b>					
	$\Delta\tau$	—	40	—	ns
<b>Impedance at 36,50 MHz</b>					
Input:	$Z_{IN} = R_{IN} \parallel C_{IN}$	—	0,9    21,7	—	k $\Omega$    pF
Output:	$Z_{OUT} = R_{OUT} \parallel C_{OUT}$	—	1,4    5,9	—	k $\Omega$    pF
<b>Temperature coefficient of frequency</b>					
	$TC_f$	—	-72	—	ppm/K



<b>SAW Components</b>	<b>K 6265 K</b>
<b>IF Filter for Intercarrier/Multistandard Applications</b>	<b>38,00 MHz</b>

**Data Sheet**

**Characteristics in D/K mode (switching input pin 10 connected to ground input pin 2)**

Reference temperature:  $T_A = 25\text{ }^\circ\text{C}$   
 Terminating source impedance:  $Z_S = 50\ \Omega$   
 Terminating load impedance:  $Z_L = 2\ \text{k}\Omega \parallel 3\ \text{pF}$

		<b>min.</b>	<b>typ.</b>	<b>max.</b>	
<b>Insertion attenuation</b>					
	$\alpha$				
Reference level for the following data	36,50 MHz	14,2	15,7	17,2	dB
<b>Relative attenuation</b>					
	$\alpha_{\text{rel}}$				
Picture carrier	38,00 MHz	5,3	6,3	7,3	dB
Color carrier	33,57 MHz	0,8	1,8	2,8	dB
Sound carrier	31,50 MHz	18,7	20,7	22,7	dB
	32,50 MHz	15,9	17,9	19,9	dB
Adjacent picture carrier	30,00 MHz	46,0	54,0	—	dB
	31,00 MHz	40,0	50,0	—	dB
Adjacent sound carrier	39,50 MHz	44,0	55,0	—	dB
Lower sidelobe	25,00 ... 30,00 MHz	39,0	45,0	—	dB
Upper sidelobe	39,50 ... 45,00 MHz	37,0	43,0	—	dB
<b>Reflected wave signal suppression</b>					
1,2 $\mu\text{s}$ ... 6,0 $\mu\text{s}$ after main pulse (test pulse 250 ns, carrier frequency 36,50 MHz)		42,0	50,0	—	dB
<b>Feedthrough signal suppression</b>					
1,3 $\mu\text{s}$ ... 1,2 $\mu\text{s}$ before main pulse (test pulse 250 ns, carrier frequency 36,50 MHz)		—	56,0	—	dB
<b>Group delay predistortion</b>					
	$\Delta\tau$				
(reference frequency 38,00 MHz)					
	34,50 MHz	—	-80	—	ns
	33,57 MHz	—	-20	—	ns
<b>Impedance at 36,50 MHz</b>					
Input:	$Z_{\text{IN}} = R_{\text{IN}} \parallel C_{\text{IN}}$	—	0,6 $\parallel$ 27,0	—	k $\Omega$ $\parallel$ pF
Output:	$Z_{\text{OUT}} = R_{\text{OUT}} \parallel C_{\text{OUT}}$	—	1,4 $\parallel$ 5,9	—	k $\Omega$ $\parallel$ pF
<b>Temperature coefficient of frequency</b>					
	$TC_f$	—	-72	—	ppm/K



SAW Components

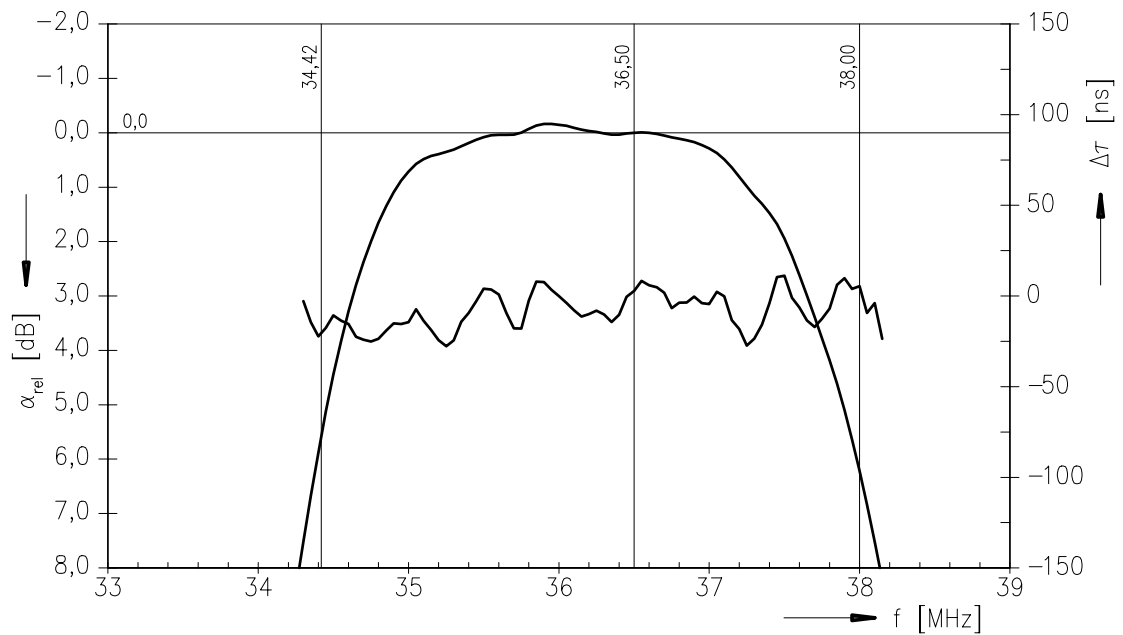
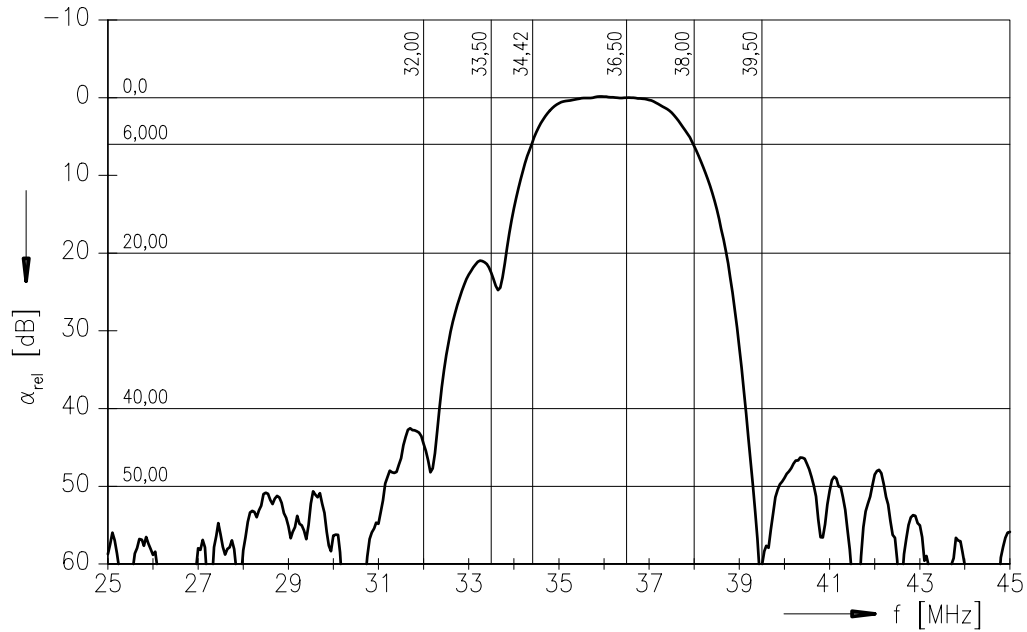
K 6265 K

IF Filter for Intercarrier/Multistandard Applications

38,00 MHz

Data Sheet

Frequency response M/N mode (switching input pin 10 connected to input pin 1)





SAW Components

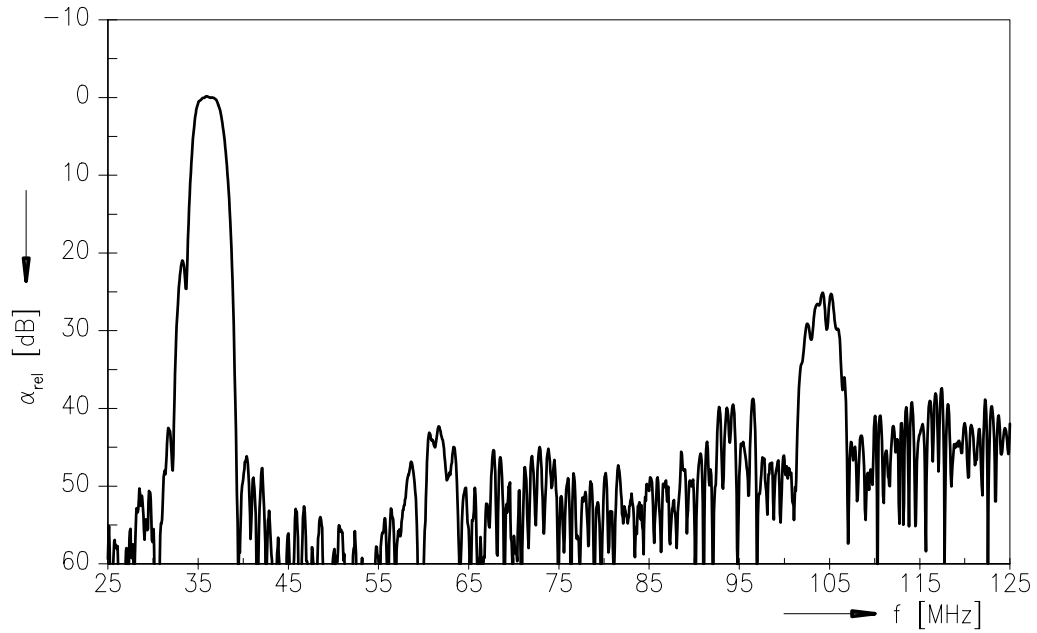
K 6265 K

IF Filter for Intercarrier/Multistandard Applications

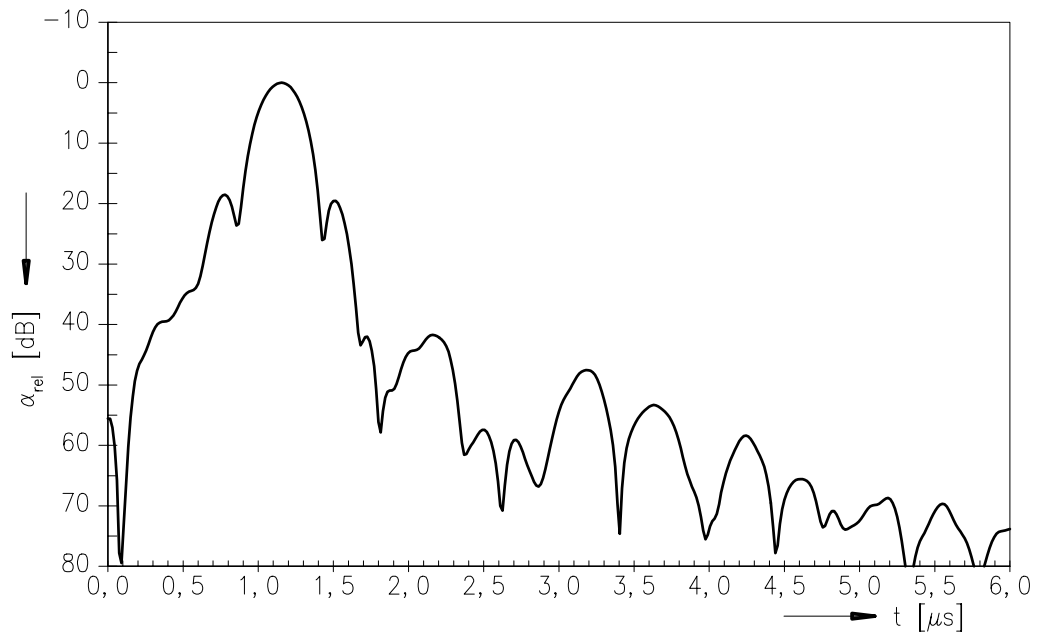
38,00 MHz

Data Sheet

Frequency response M/N mode (switching input pin 10 connected to input pin 1)



Time domain response M/N mode





SAW Components

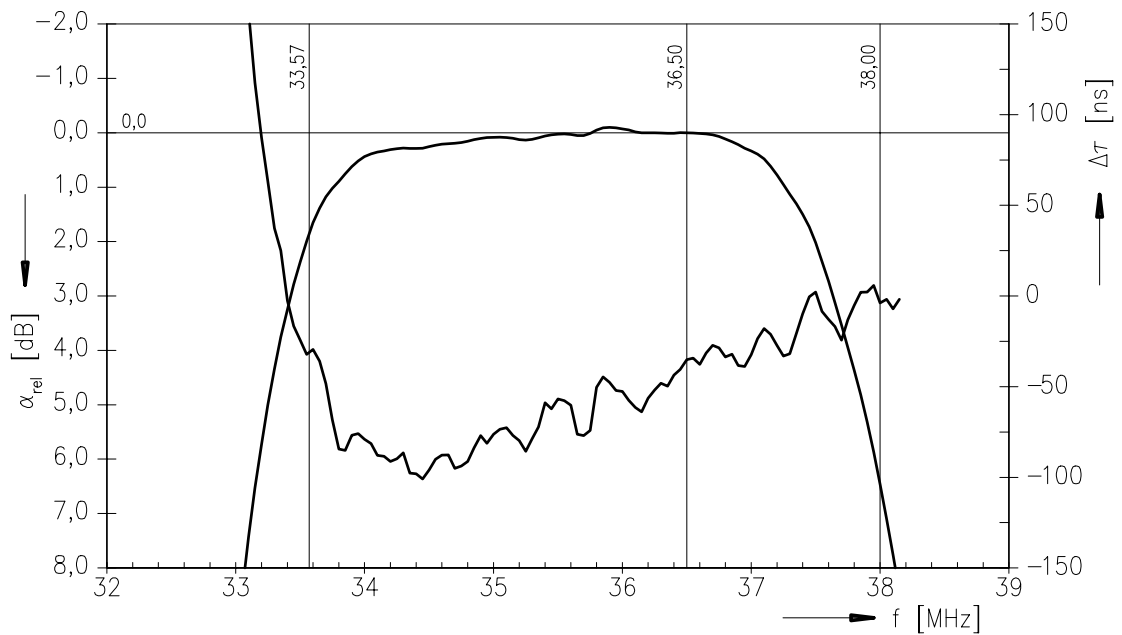
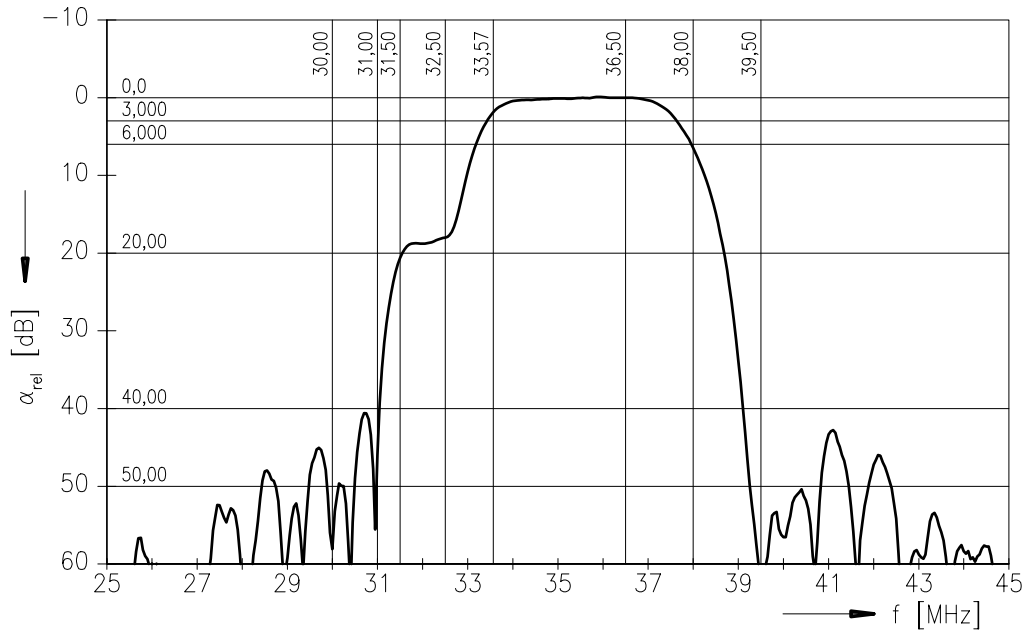
K 6265 K

IF Filter for Intercarrier/Multistandard Applications

38,00 MHz

Data Sheet

Frequency response D/K mode (switching input pin 10 connected to ground input pin 2)





SAW Components

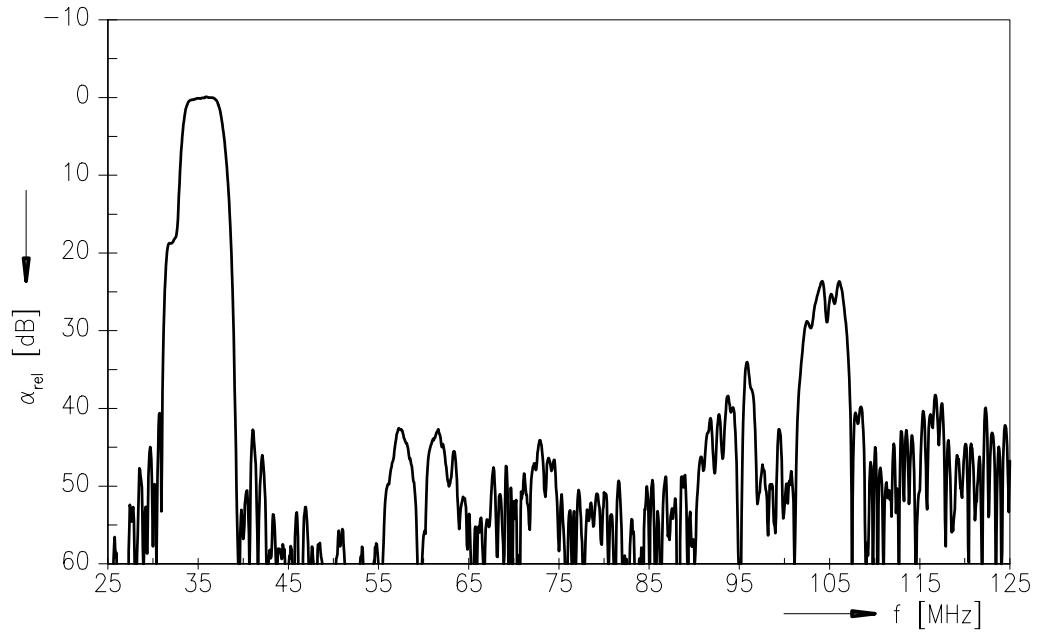
K 6265 K

IF Filter for Intercarrier/Multistandard Applications

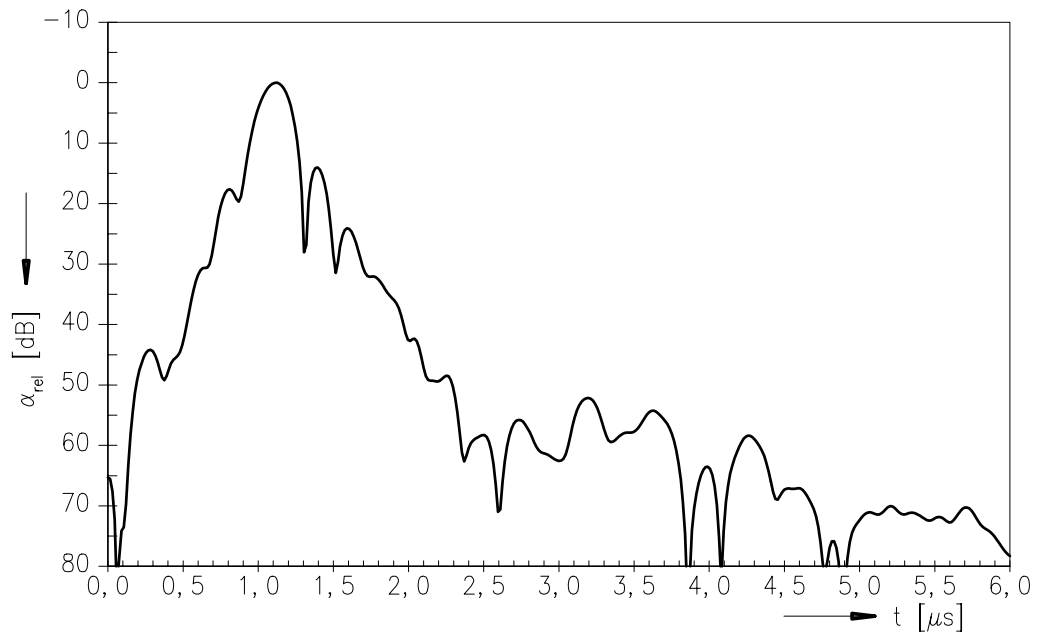
38,00 MHz

Data Sheet

Frequency response D/K mode (switching input pin 10 connected to ground input pin 2)



Time domain response D/K mode







**SAW Components**

**K 6265 K**

**IF Filter for Intercarrier/Multistandard Applications**

**38,00 MHz**

Data Sheet

**Published by EPCOS AG**

**Surface Acoustic Wave Components Division, SAW CE MM PD**

**P.O. Box 80 17 09, D-81617 München**

© EPCOS AG 2001. All Rights Reserved.

As far as patents or other rights of third parties are concerned, liability is only assumed for components per se, not for applications, processes and circuits implemented within components or assemblies.

The information describes the type of component and shall not be considered as assured characteristics.

Terms of delivery and rights to change design reserved.

For questions on technology, prices and delivery please contact the sales offices of EPCOS AG or the international representatives.

Due to technical requirements components may contain dangerous substances. For information on the type in question please also contact one of our sales offices.