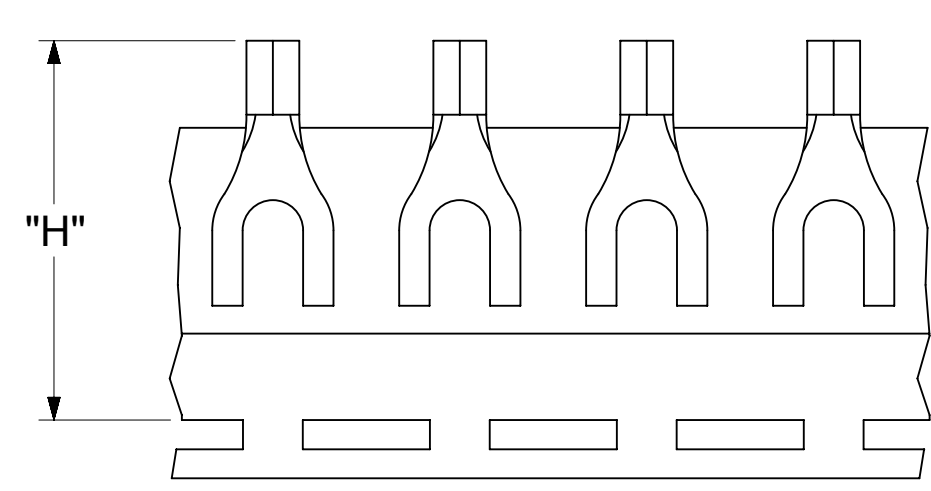
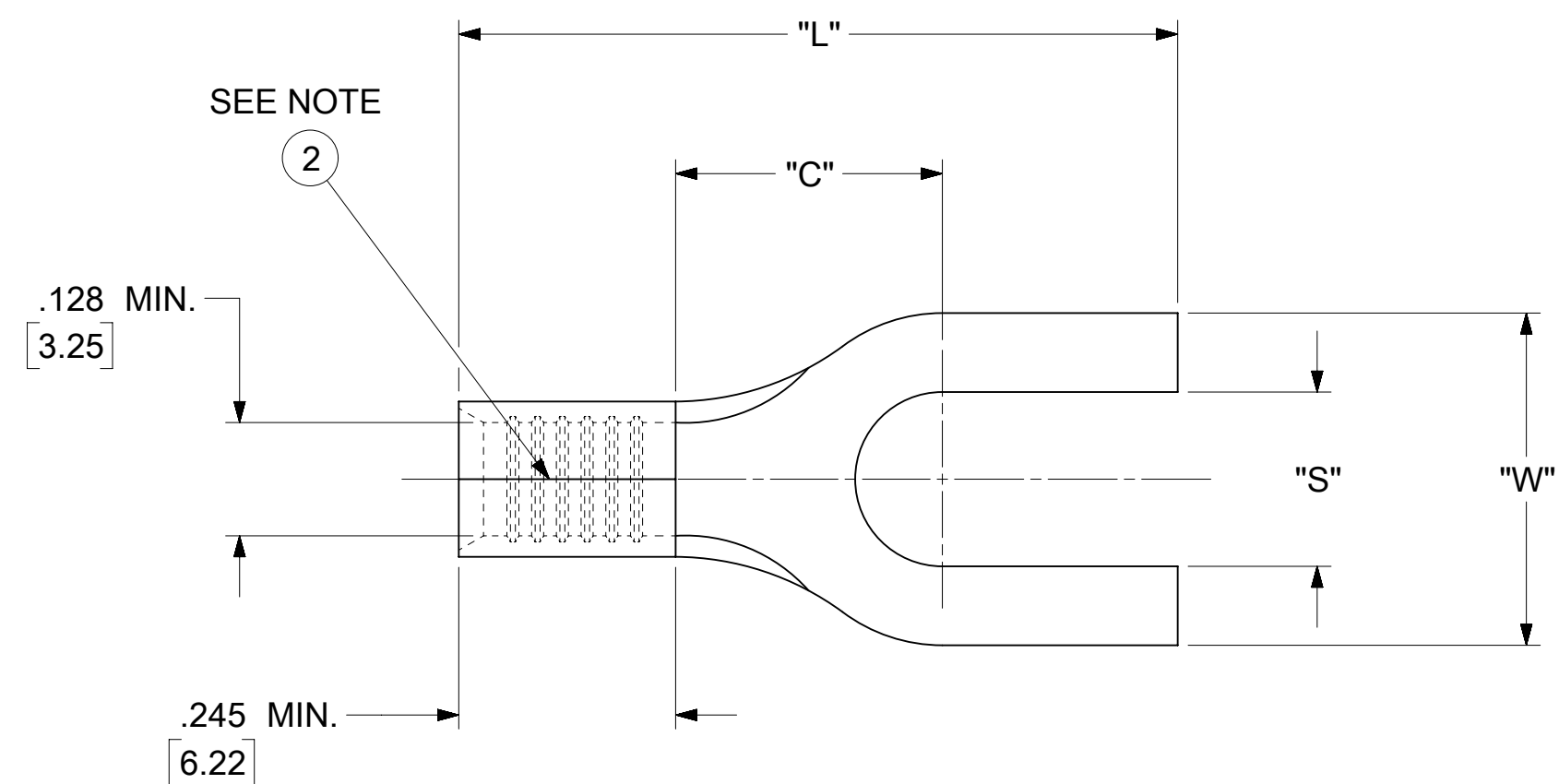


LOOSE PIECE		TAPE MOUNTED		SPECIFICATIONS					
MATERIAL NUMBER	ENGINEERING NUMBER	MATERIAL NUMBER	ENGINEERING NUMBER	STUD SIZE	"S" ±.005 [0.13]	"W" ±.010 [0.25]	"C" MIN.	"L" MAX.	"H"
191470092	C-341-06	---	---	6	.146 [3.71]	.375 [9.53]	.301 [7.65]	.812 [20.62]	---
191470105	C-341-08	---	---	8	.173 [4.39]				
191470096	C-341-10	---	---	10	.198 [5.03]				
191470103	C-368-56	191470135	C-368-56T	56	.328 [8.33]	.533 [13.54]	.393 [9.98]	.965 [24.51]	1.426 [36.22]



PARTS ON TAPE

NOTES:

- MATERIAL:  
 TERMINAL: COPPER ( STOCK TKN .040±.001 [1.02] )  
 PLATING: ELECTRO-TIN (.0003 MIN).
- BRAZED SEAM
- WIRE SIZE: 12-10 AWG  
 4.0-6.0 MM<sup>2</sup>
- "UL" LISTING #E32244  
 "CSA" LISTING #18689
- ALL DIMENSIONS IN INCHES/[MM].
- PARTS ARE ROHS COMPLIANT.
- DIMS. SHOWN ARE FOR REFERENCE ONLY.

<b>SYMBOLS</b> ▽ = 0 ▽ = 0 ▽ = 0 ▽ = 0 ▽ = 0 ▽ = 0 ▽ = 0 ▽ = 0 ▽ = 0 ▽ = 0 ▽ = 0	THIS DRAWING CONTAINS INFORMATION THAT IS PROPRIETARY TO MOLEX ELECTRONIC TECHNOLOGIES, LLC AND SHOULD NOT BE USED WITHOUT WRITTEN PERMISSION			
	DIMENSION UNITS		SCALE	
	INCH/MM		NTS	
	GENERAL TOLERANCES (UNLESS SPECIFIED)			
	4 PLACES ± --- ± ---		MM	
3 PLACES ± --- ± .005		INCH		
2 PLACES ± 0.13 ± .01		EC NO: 625848		
1 PLACE ± 0.25 ± ---		DRWN: ABENJAMINLW 2019/09/12		
0 PLACES ± --- ± ---		CHK'D: GROJAS01 2019/10/17		
ANGULAR TOL ± 0.5 °		APPR: JMACNEIL 2019/10/18		
DRAFT WHERE APPLICABLE MUST REMAIN WITHIN DIMENSIONS		INITIAL REVISION:		
THIRD ANGLE PROJECTION		DRWN: JJ 1984/11/28		
DRAWING		SERIES		
C-SIZE		19147		
MATERIAL NUMBER		CUSTOMER		
SEE TABLE		GENERAL MARKET		
DOCUMENT NUMBER		DOC TYPE   DOC PART   REVISION		
CCD30302		PSD   001   A		
SHEET NUMBER		1 OF 1		