

THIS DRAWING IS UNPUBLISHED. RELEASED FOR PUBLICATION

© COPYRIGHT - BY TYCO ELECTRONICS CORPORATION. ALL RIGHTS RESERVED.

LOC EA	DIST 51	REVISIONS		
P	LTR	DESCRIPTION	DATE	DWN
	R	ECR 07-020023	28JAN08	LGE
				APVD RP

NOTES :

1. CONNECTOR KEYING CONFORMS TO ANSI X3T9.5/84-48.

2. LED IS 'ON' WHEN IN INSERTED STATE.

SPECIFICATIONS :

SWITCH LEGEND	
PI = PRIMARY IN	PTx = PRIMARY TRANSMIT
SO = SECONDARY OUT	STx = SECONDARY TRANSMIT
PO = PRIMARY OUT	PRx = PRIMARY RECEIVE
SI = SECONDARY IN	SRx = SECONDARY RECEIVE

PART No.	FIBER TYPE	"A" LENGTH	FIBEROPTIC PIGTAIL CONNECTOR STYLE
209161	62.5/125/250	1000 mm	FSD
3-209161	62.5/125/250	3000 mm	FSD

OBSOLETE

INSERTION LOSS

INSERTION LOSS DATA INCLUDES TWO CONNECTED PAIRS TESTED PER FOTP-34 METHOD A2

OPERATE MODE, POWER ON

PI LINE	TO PRX STATION	2.8 DB MAX
SI LINE	TO SRX STATION	2.8 DB MAX
PTX STATION	TO PO LINE	2.8 DB MAX
STX STATION	TO SO LINE	2.8 DB MAX

BYPASS MODE, POWER OFF

PI LINE	TO PO LINE	2.8 DB MAX
SI LINE	TO SO LINE	2.8 DB MAX
PTX STATION	TO PRX STATION	5.0 DB MAX
STX STATION	TO SRX STATION	5.0 DB MAX

OPTICAL CROSSTALK $\leq -45\text{ DB}$, PER FOTP-42

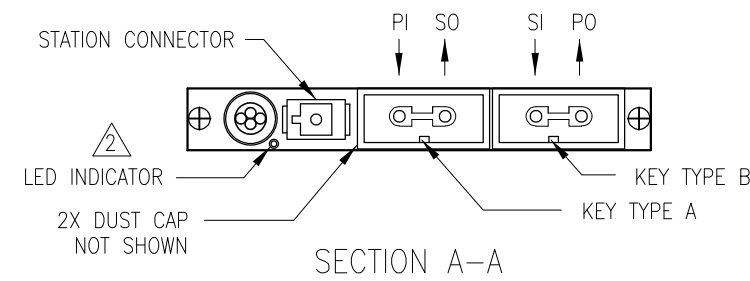
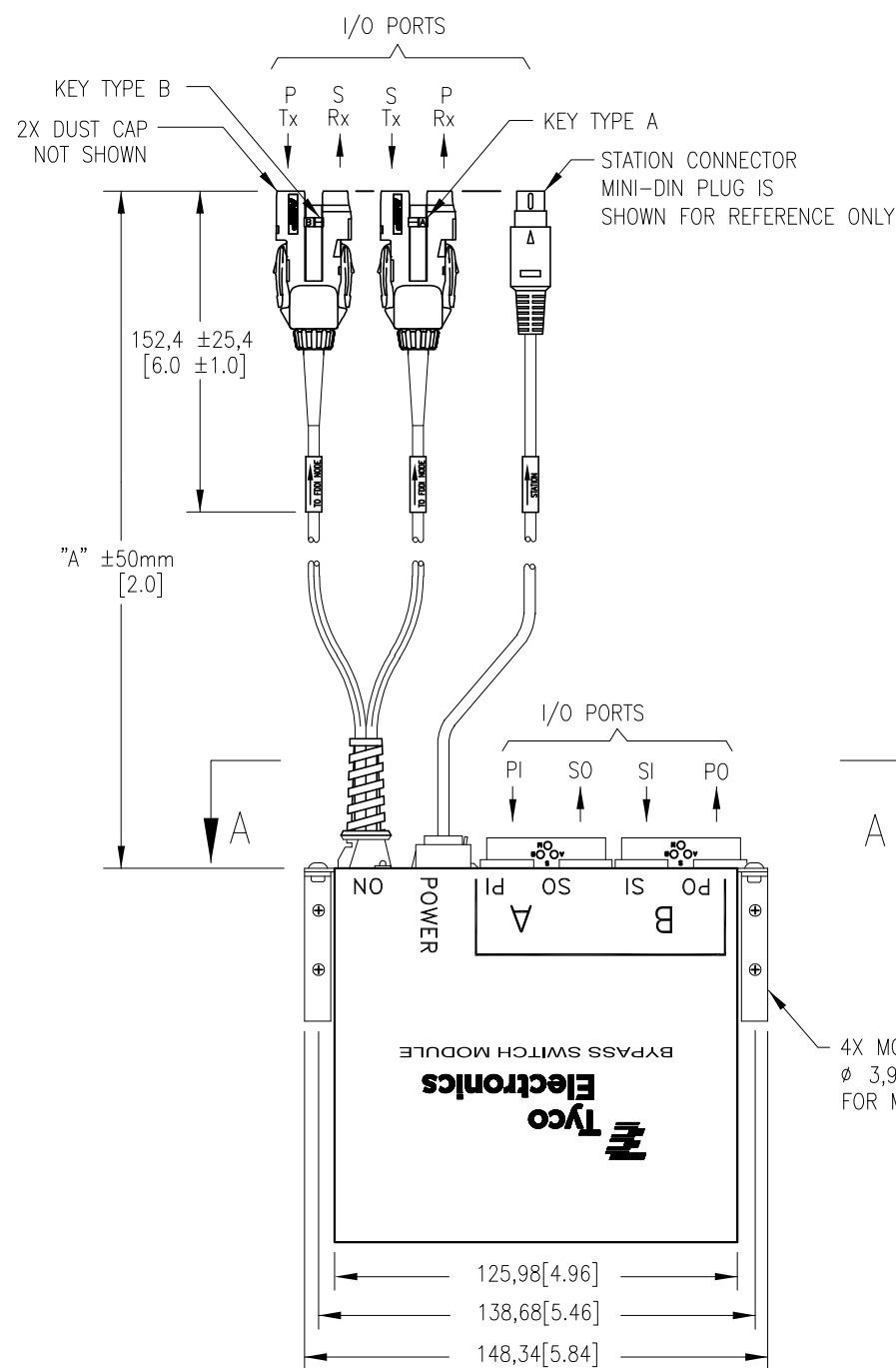
OPERATING WAVE LENGTH 750 TO 1450nm

TESTED WAVELENGTH 1300nm

POWER REQUIREMENTS 4.0 TO 5.5 VDC

190 MA MAX AT 5.0 VDC W/ LED

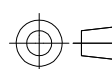
SWITCHING SPEED 10 MILLISECONDS MAX



KIT P/N	MODULE P/N	POWER CORD P/N	STATION CONNECTOR TYPE
OBSOLETE 209161-1	209660-3	209501-1	6 POS. MTE RECEPTACLE
OBSOLETE 209161-2	209660-3	209502-1	6 POS. SHIELDED DIN PLUG
OBSOLETE 209161-3	209660-3	209503-1	6 POS. SHIELDED MOD PLUG
209161-4	209660-3	209504-1	6 POS. SHIELDED MINI DIN
OBSOLETE 209161-5	209660-3	209505-1	9 POS. SUB-D
OBSOLETE 209161-6	209660-3	209506-1	4 POS. MOD PLUG
OBSOLETE 209161-7	209660-3	209507-1	25 POS. SHIELDED HDE PLUG

THIS DRAWING IS A CONTROLLED DOCUMENT.

DIMENSIONS: mm [inches]



TOLERANCES UNLESS OTHERWISE SPECIFIED:	
0 PLC	± -
1 PLC	± 1,27[.05]
2 PLC	± 0,13[.005]
3 PLC	± -
4 PLC	± -
ANGLES	± 2'

MATERIAL

FINISH

DWN R. MONTANEZ 31OCT2001

CHK P. DAMATO 15SEPT03

APVD M. KADAR-KALLEN 15SEPT03

PRODUCT SPEC

APPLICATION SPEC

WEIGHT

CUSTOMER DRAWING

Tyco Electronics Tyco Electronics Corporation Harrisburg, PA 17105-3608

NAME BYPASS SWITCH KIT FSD MIC ADAPTOR/FSD MIC PIGTAILS

SIZE	CAGE CODE	DRAWING NO	RESTRICTED TO
A3	00779	209161	-

SCALE NONE SHEET 1 OF 1 REV R