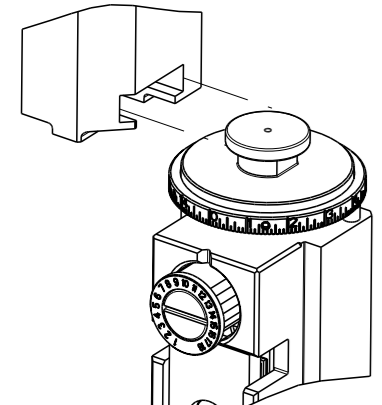



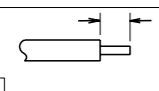
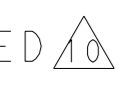

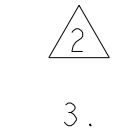
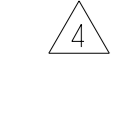
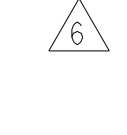
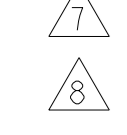
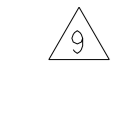
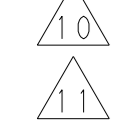




ATLANTIC VERSION TERMINATOR INTERFACE ADAPTER	PART NUMBER	REVISION	DESCRIPTION	FEED TYPE	APPLICATOR STYLE CONVERSION CHART					
					CONVERT TO	PART NUMBERS REQUIRED				
	2150479-2	A	FINE CRIMP HEIGHT ADJUST	PNEUMATIC	-	-	-	-	-	-
	2150479-5	A	FINE CRIMP HEIGHT ADJUST	SERVO LATCH PLATE 	SERVO LATCH PLATE	2119951-1	1901697-1	8-2150479-5	-	2168400-7 (QUANTITY 2)
	2150479-6	A	NON-CRIMP HEIGHT ADJUST	SERVO LATCH PLATE 	PNEUMATIC FEED	2119950-1	1-2119792-0	-	2119641-1	2063440-1
	2150479-7	A	FINE CRIMP HEIGHT ADJUST	NONE	-	-	-	-	-	-
	7-2150479-7	A	CRIMP TOOLING KIT	-	-	-	-	-	-	-

APPLICATOR DATA		
CRIMP	SIZE	TYPE
WIRE	2.28 mm [.090]	F
INSUL	3.05 mm [.120]	Ø
APPL INSTRUCTIONS 408-10390 		

TERMINAL DATA: FLACHSTECKER TERMINAL		TE CRIMP SPECIFICATION	
TERMINAL NAME: TERMINAL			
WIRE STRIP LENGTH		INSULATION DIAMETER RANGE	
3.00-3.70 mm [.118-.146 IN]		Ø 2.20-3.00 mm [.087-.118 IN]	
TERMINAL APPLICATION SPECIFICATION	NONE		
TERMINALS APPLIED 			
TE TERMINAL	FLACHSTECKER TERMINAL	TE TERMINAL	FLACHSTECKER TERMINAL
2113575-1	52855126001		

WIRE SIZE	CRIMP HEIGHT mm [INCH]	CRIMP HEIGHT REFERENCE SETTING
20 AWG	1.32 +/- 0.05 [.052 +/- .002]	7.9

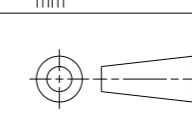
-  RECOMMENDED SPARE PARTS
-  GREASE BEARING SURFACES LIGHTLY
- 3. LUBRICATE DAILY PER THE APPLICATOR INSTRUCTION SHEET SUPPLIED WITH THE APPLICATOR.
-  APPLICATOR SPECIFIC DATA TO BE ENTERED INTO BLANK MEMORY CHIP AT ASSEMBLY. SEE BELOW FOR PART NUMBER:
 PNEUMATIC FEED WITH "SMART APPLICATOR" CONVERSION: 8-2150479-4
 SERVO FEED WITH "FINE CRIMP HEIGHT ADJUST": 8-2150479-5
 SERVO FEED WITH "NON-CRIMP HEIGHT ADJUST": 8-2150479-6
- 5. ADJUSTMENT OF THE STRIPPER MAY BE REQUIRED WHEN MOVING THE APPLICATOR BETWEEN BENCH AND LEADMAKER APPLICATIONS.
-  APPLY PART NUMBER 1-23419-5 LOCTITE TO THREADS OF ITEMS 62. APPLY PART NUMBER 2-23419-6 LOCTITE TO THREADS OF ITEM 242. FOR -6 ONLY APPLY PART NUMBER 1-23419-5 LOCTITE TO THREADS OF ITEMS 37.
-  GREASE THREADS, GROOVE AND O-RING ON ITEMS 35 & 252.
-  MAGNET, ITEM 166 MUST BE ORIENTED CORRECTLY IN ORDER TO PROPERLY ACTUATE THE COUNTER.
-  CRIMP HEIGHT REFERENCE SETTING WAS THE SETTING USED WHEN THE APPLICATOR WAS QUALIFIED AT THE FACTORY. ADJUSTMENT MAY BE NECESSARY WHEN RUNNING APPLICATOR IN THE FIELD.
-  TERMINAL PITCH NOT COMPATIBLE WITH MECHANICAL FEED.
-  WHEN ASSEMBLING -6 NON-CRIMP HEIGHT ADJUST APPLICATOR USE SHIM PACK 2119957-2 TO ALIGN APPLICATOR'S MAXIMUM WIRE CRIMP HEIGHT AT NORMAL TERMINATOR SHUT HEIGHT

***WARNING**
 ON INSTALLATION, SET WIRE DISC, ITEM 40 TO LARGEST WIRE SIZE SETTING. USE OF SETTINGS BELOW MINIMUM REQUIRED CRIMP HEIGHT SETTING WILL CAUSE DAMAGE TO CRIMP TOOLING.

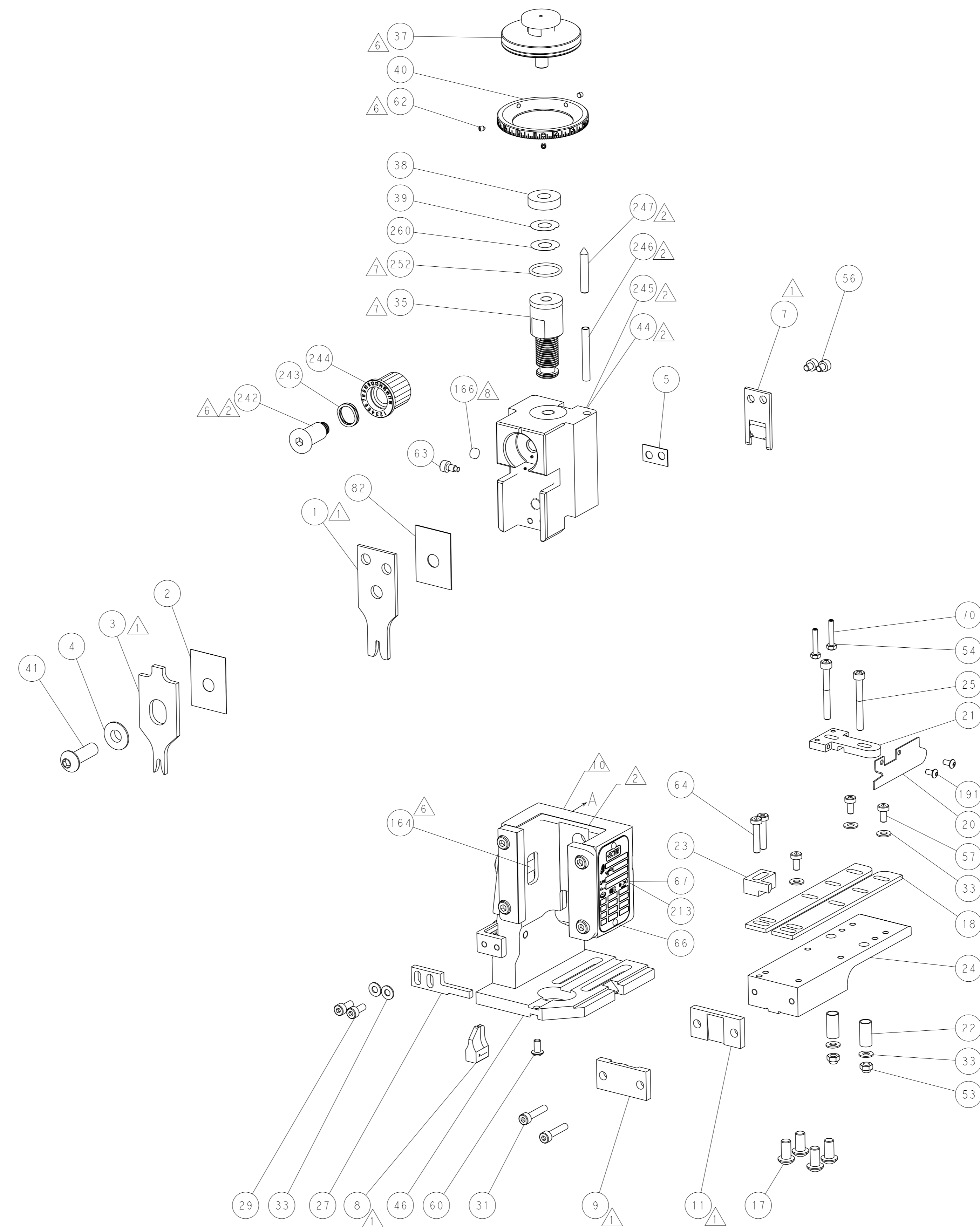
ATLANTIC VERSION
 Shown on sheets 1 of 4 & 2 of 4
 (Pacific version shown on sheets 3 of 4 & 4 of 4)

SET UP GAUGE	LOC	DIST	REVISIONS					
2119599-2	A	66	P	LYH	DESCRIPTION	DATE	OWN	APVD
			A		RELEASED	26APR2010	KS	TE

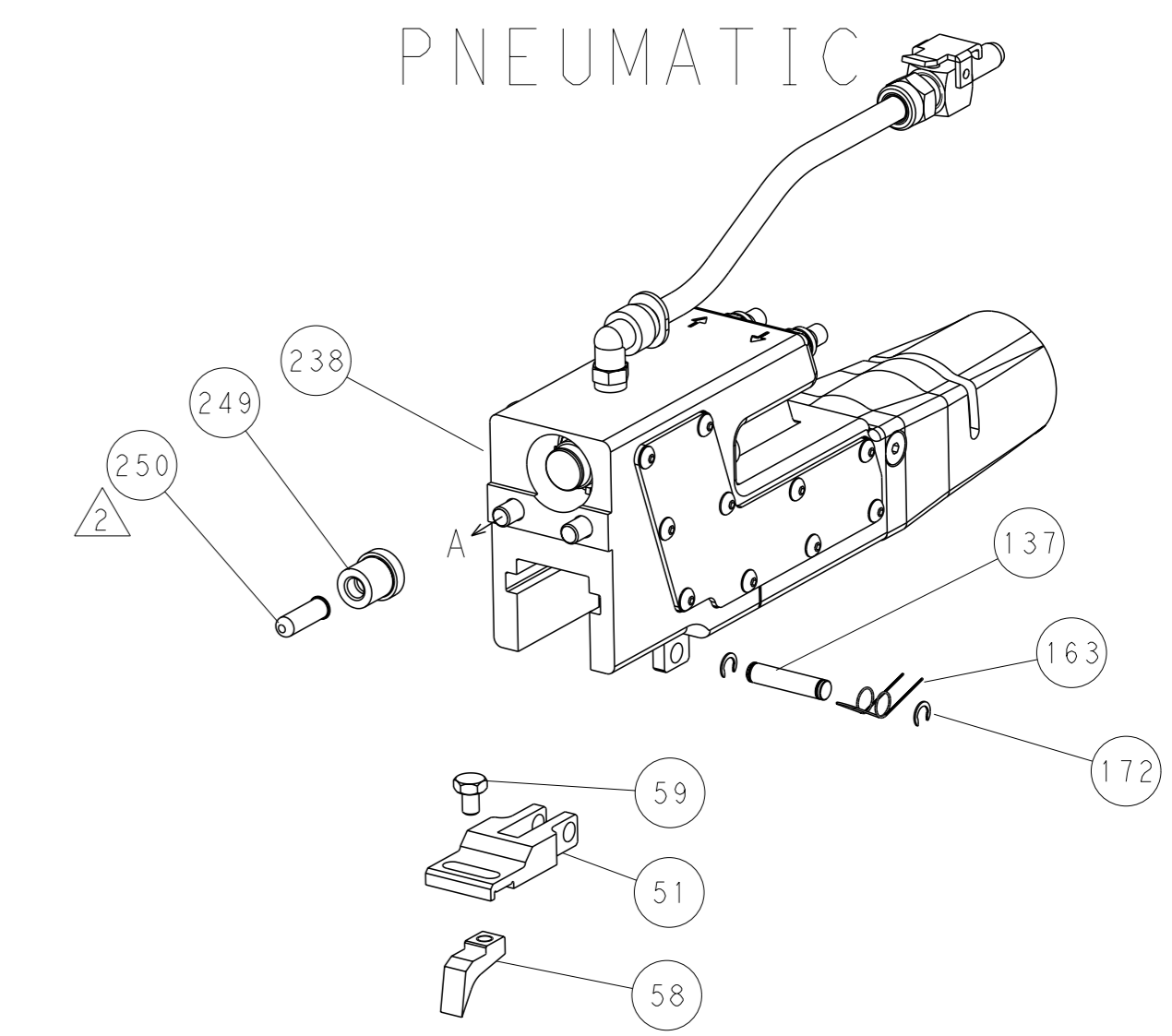
-	-	1	-	-	2119957-2	APPLICATOR SHIM PACK	260			
-	1	-	1	1	8-21084-0	O-RING, .676 ID, .070 DIA. MAT.	252			
-	-	-	-	1	2119640-1	PUSH ROD, AIR FEED	250			
-	-	-	-	1	2079988-1	BUSHING, LCH5-12, MISUMI	249			
-	-	-	-	1	2119641-1	FEED CAM, AIR FEED	248			
-	1	-	1	1	2119798-1	DETENT PIN	247			
-	1	-	1	1	1-22279-3	SPRING, COMPRESSION	246			
-	-	1	-	-	2119759-1	RAM, AMP STYLE, END FEED, NON-ADJUST	245			
-	1	1	1	1	2119082-4	CAM, SNAIL, INSULATION ADJUSTMENT	244			
-	1	1	1	1	2079764-1	WASHER, WAVE SPRING, CREST-TO-CREST	243			
-	1	1	1	1	2119083-1	RETAINER, INSULATION DIAL	242			
-	-	2	2	-	2168400-7	SHCS, LOW HEAD, RoHS, M5 X 10	240			
-	-	-	-	1	2063440-1	AIR FEED MODULE	238			
-	-	1	1	-	2119740-2	TAG, IDENTIFICATION	213			
-	2	2	2	2	1-2079383-0	SCR, BHSC, RoHS (M3 X 6)	191			
-	-	REFREF	-	-	1901697-1	FEED FINGER ASSEMBLY, EF	183			
-	-	-	-	2	21045-3	RING, RETAIN, EXTERN, 3/16 CRESCENT	172			
-	1	1	1	1	994969-1	MAGNET, RARE EARTH HIGH ENERGY	166			
-	REFREF	REFREF	-	-	994970-2	COUNTER, MAGNETIC	164			
-	-	-	-	1	240638-1	SPRING, FEED FINGER	163			
-	-	REFREF	-	-	SEE NOTE 4	MEMORY CHIP, PROGRAMMED	135			
-	-	1	1	-	1633743-1	SERVO FEED LATCH ASM	133			
-	1	1	1	1	455888-5	SPACER, CRIMPER	82			
-	1	1	1	1	2119956-2	DOCUMENTATION PACKAGE	71			
-	2	2	2	2	3-18032-3	SCR, SET, FLT POINT M3 X 20.0	70			
-	1	-	-	1	2119740-1	TAG, IDENTIFICATION	67			
-	2	2	2	2	2168078-1	SCREW, DRIVE, RH, RoHS, 2 x .188	66			
-	2	2	2	2	2168400-5	SHCS, LOW HEAD, RoHS, M4 X 20	64			
-	1	-	1	1	2119793-1	LIMITER, ADJUSTMENT BOLT	63			
-	3	-	3	3	992763-5	SCR, SET, SOC, CONE POINT, M3 x 4.0	62			
-	1	1	1	1	2079383-4	SCR, BHSC, RoHS (M4 X 8)	60			
-	-	-	-	1	5-18022-5	SCR, HEX HD CAP, M4 X 6.0	59			
-	-	-	-	1	2063961-2	FEED FINGER	58			
-	3	3	3	3	2168400-4	SHCS, LOW HEAD, RoHS, M4 X 8	57			
-	2	2	2	2	1-2168083-4	SCR, SKT HD CAP, RoHS, M4 X 5	56			
-	2	2	2	2	5018030-1	NUT, HEX, REG, RoHS, M3	54			
-	2	2	2	2	986965-8	NUT, LOCK, HEX, TORQUE (M4)	53			
-	-	-	-	1	2119799-1	HOLDER, FEED FINGER, AF	51			
-	-	-	-	1	18023-9	SCR, SKT HD CAP M4 X 6.0	49			
-	1	1	1	1	2119655-5	APPLICATOR BASIC ASSEMBLY, EF	46			
-	1	-	1	1	2119369-1	RAM, AMP STYLE, END FEED	44			
-	1	1	1	1	2079383-7	SCR, BHSC, RoHS (M8 X 25)	41			
-	1	-	1	1	2119645-1	DISC, NUMBERED FA WIRE ADJUSTMENT	40			
-	1	-	1	1	2119957-1	APPLICATOR SHIM PACK	39			
-	1	1	1	1	1-2119644-2	RAM WASHER, PRECISION	38			
-	1	1	1	1	2119085-1	FA HEAD, ATLANTIC STYLE	37			
-	1	-	1	1	2119092-1	BOLT, ADJUSTMENT	35			
-	7	7	7	7	1-18028-2	WASHER, FLAT, REG M4	33			
-	2	2	2	2	2168083-9	SCR, SKT HD CAP, RoHS, M4 X 20	31			
-	2	2	2	2	1-2168083-0	SCR, SKT HD CAP, RoHS, M4 X 10	29			
-	1	1	1	1	1-690455-2	STRIPPER, FRONT CASTING	27			
-	2	2	2	2	1-2168083-6	SCR, SKT HD CAP, RoHS, M4 X 35	25			
-	1	1	1	1	1752371-5	PLATE, STRIP GUIDE	24			
-	1	1	1	1	2-240825-1	PLATE, STRIP HOLD DOWN	23			
-	2	2	2	2	22281-9	SPRING, COMPRESSION	22			
-	1	1	1	1	1-1633168-1	ARM, STOCK DRAG	21			
-	1	1	1	1	2280330-1	DRAG, SKATE	20			
-	2	2	2	2	1901259-5	GUIDE, LOWER STRIP	18			
-	4	4	4	4	1-2079383-1	SCR, BHSC, RoHS (M6 X 12)	17			
-	1	1	1	1	240644-9	PLATE, REAR SHEAR	11			
-	-	-	-	-	-	-	10			
-	1	1	1	1	6-690482-3	PLATE, FRONT SHEAR	9			
-	1	1	1	1	1-1803060-5	ANVIL, COMBINATION, END FEED	8			
-	1	1	1	1	1-2217206-0	BLADE, SLUG	7			
-	-	-	-	-	-	-	6			
-	1	1	1	1	2-240641-1	SPACER	5			
-	1	1	1	1	238009-1	BLOCK, FL CRIMPER SPACER	4			
-	1	1	1	1	5-1633965-5	CRIMPER, INSULATION O PREMIUM	3			
-	1	1	1	1	455888-1	SPACER, CRIMPER	2			
-	1	1	1	1	2-456406-9	CRIMPER, WIRE PREMIUM	1			
-	77	-	7	-	-6	-5	-2	PART NO	DESCRIPTION	ITEM NO

DIMENSIONS:		TOLERANCES UNLESS OTHERWISE SPECIFIED:		OWN: R. STAKEM	DATE: 08SEP2014
mm		0 PLC ±.5		CHK: G. BAILEY	DATE: 08SEP2014
		1 PLC ±0.5		APVD: T. ELBIN	DATE: 08SEP2014
		2 PLC ±0.13		NAME: Ocean End Feed Applicator	
		3 PLC ±0.013		SIZE: A	
		4 PLC ±0.0001		CAGE CODE: 00779	
		ANGLES FINISH ±.1		DRAWING NO: 2150479	
MATERIAL:		WEIGHT:		RESTRICTED TO:	
				Customer Accessible Production Drawing	
		SCALE: 1:1		SHEET 1 OF 4	
				REV: A	

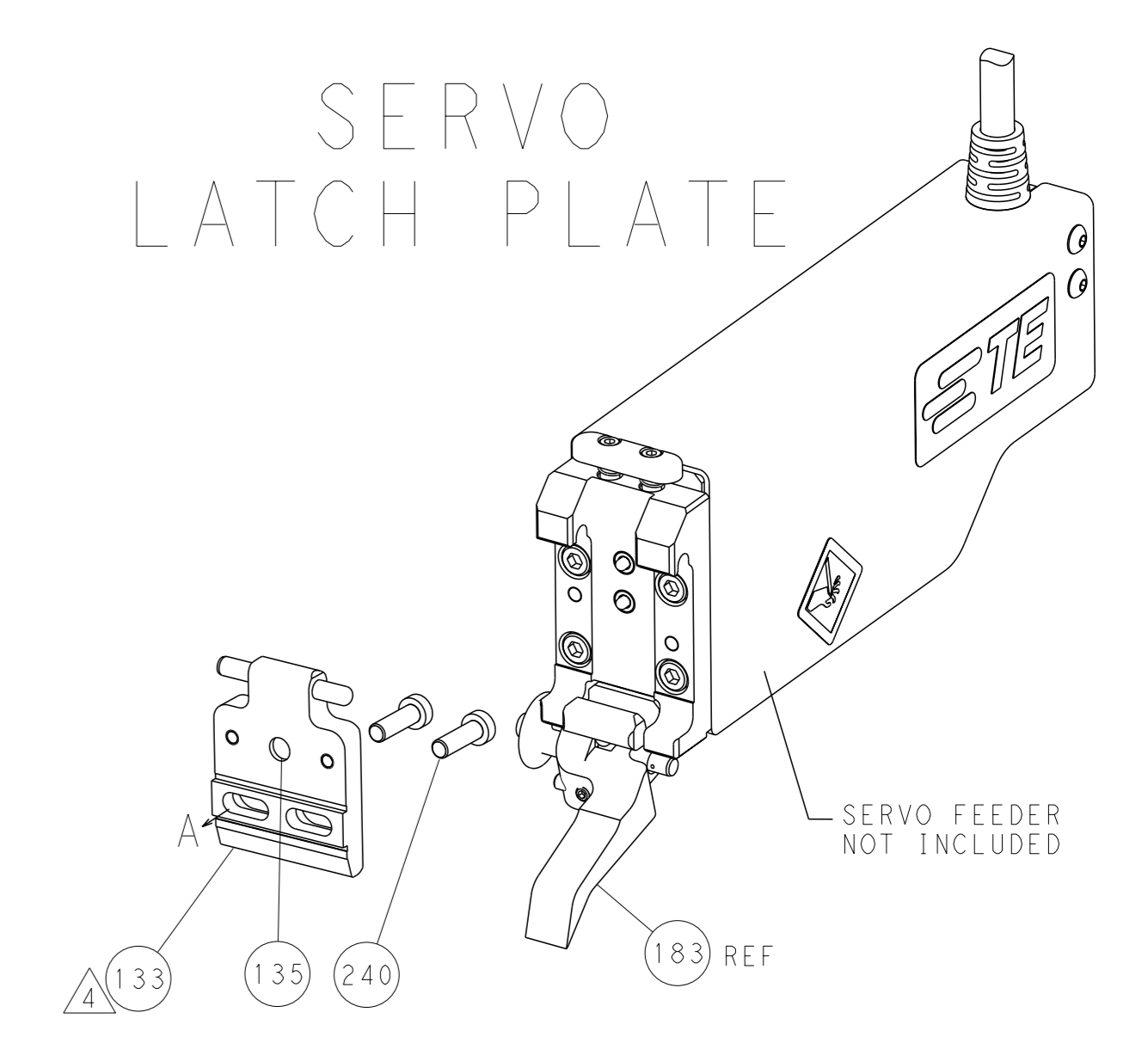
LOC		DIST		REVISIONS			
A	66	P	LYR	DESCRIPTION	DATE	OWN	APVD
		-		SEE SHEET 1			



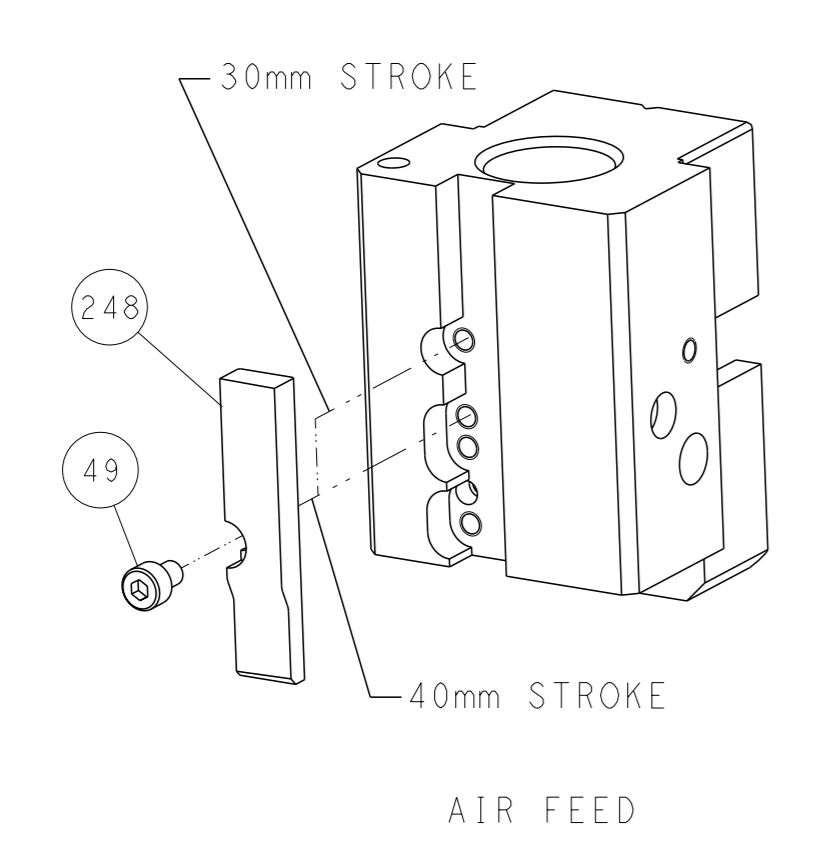
FEED TYPE PNEUMATIC



SERVO LATCH PLATE



CAM POSITION



ATLANTIC VERSION
 Shown on sheets 1 of 4 & 2 of 4
 (Pacific version shown on sheets 3 of 4 & 4 of 4)

<small>THIS DRAWING IS A CONTROLLED DOCUMENT FOR TYCO ELECTRONICS CORPORATION. IT IS SUBJECT TO CHANGE AND THE USER MUST CONTACT THE DESIGNATION SHOULD BE CONTACTED FOR THE LATEST REVISION.</small>		DWN: K. STAKEM CHK: G. BAILEY APVD: T. ELBIN	08SEPT2014 08SEPT2014 08SEPT2014	TE Connectivity Harrisburg, PA 17105-3608
DIMENSIONS: mm TOLERANCES UNLESS OTHERWISE SPECIFIED: 0 PLC ±.5 1 PLC ±0.5 2 PLC ±0.13 3 PLC ±0.013 4 PLC ±0.001 ANGLES FINISH ±.		NAME: Ocean End Feed Applicator PRODUCT SPEC: APPLICATION SPEC: WEIGHT:	SIZE: A1 CAGE CODE: 00779 DRAWING NO: C=2150479	RESTRICTED TO:
MATERIAL:		CUSTOMER ACCESSIBLE PRODUCTION DRAWING	SCALE: 1:1	SHEET 2 OF 4 REV A

PACIFIC VERSION TERMINATOR INTERFACE ADAPTER	PART NUMBER	REVISION	DESCRIPTION	FEED TYPE
	2-2150479-2	A	FINE CRIMP HEIGHT ADJUST	PNEUMATIC
	2-2150479-5	A	FINE CRIMP HEIGHT ADJUST	SERVO LATCH PLATE ⁴
	2-2150479-7	A	FINE CRIMP HEIGHT ADJUST	NONE
	7-2150479-7	A	CRIMP TOOLING KIT	-

APPLICATOR DATA		
CRIMP	SIZE	TYPE
WIRE	2.28 mm [.090]	F
INSUL	3.05 mm [.120]	O
APPL INSTRUCTIONS 408-10390		

TERMINAL DATA: FLACHSTECKER TERMINAL		TE CRIMP SPECIFICATION	
TERMINAL NAME: TERMINAL			
WIRE STRIP LENGTH		INSULATION DIAMETER RANGE	
3.00-3.70 mm [.118-.146 IN]		∅ 2.20-3.00 mm [.087-.118 IN]	
TERMINAL APPLICATION SPECIFICATION	NONE	-	-
TERMINALS APPLIED ¹⁰			
TE TERMINAL	FLACHSTECKER TERMINAL	TE TERMINAL	FLACHSTECKER TERMINAL
2113575-1	52855126001		

WIRE SIZE	CRIMP HEIGHT mm [INCH]	CRIMP HEIGHT REFERENCE SETTING ⁹
20 AWG	1.32 +/- 0.05 [.052 +/- .002]	7.9

- RECOMMENDED SPARE PARTS
- GREASE BEARING SURFACES LIGHTLY
- 3. LUBRICATE DAILY PER THE APPLICATOR INSTRUCTION SHEET SUPPLIED WITH THE APPLICATOR.
- ⁴ APPLICATOR SPECIFIC DATA TO BE ENTERED INTO BLANK MEMORY CHIP AT ASSEMBLY. SEE BELOW FOR PART NUMBER:
PNEUMATIC FEED WITH "SMART APPLICATOR" CONVERSION: 8-2150479-4
SERVO FEED WITH "FINE CRIMP HEIGHT ADJUST": 8-2150479-5
- 5. ADJUSTMENT OF THE STRIPPER MAY BE REQUIRED WHEN MOVING THE APPLICATOR BETWEEN BENCH AND LEADMAKER APPLICATIONS.
- ⁶ APPLY PART NUMBER 1-23419-5 LOCTITE TO THREADS OF ITEMS 62.
APPLY PART NUMBER 2-23419-6 LOCTITE TO THREADS OF ITEM 242.
- GREASE THREADS, GROOVE AND O-RING ON ITEMS 139 & 153.
- MAGNET, ITEM 166 MUST BE ORIENTED CORRECTLY IN ORDER TO PROPERLY ACTUATE THE COUNTER.
- ⁹ CRIMP HEIGHT REFERENCE SETTING WAS THE SETTING USED WHEN THE APPLICATOR WAS QUALIFIED AT THE FACTORY. ADJUSTMENT MAY BE NECESSARY WHEN RUNNING APPLICATOR IN THE FIELD.
- ¹⁰ TERMINAL PITCH NOT COMPATIBLE WITH MECHANICAL FEED.
- ¹¹ THE RECOMMENDED SET-UP FOR END FEED APPLICATORS IS POST-FEED WITH ITEM 2119653-1. THE APPLICATOR CAN BE CONFIGURED FOR PRE-FEED WITH ITEM 2119652-1 BUT MAY ENCOUNTER PROBLEMS WITH SOME APPLICATIONS. FEED ISSUES OR TERMINAL JAMMING MAY OCCUR IN THE PRE-FEED CONFIGURATION.

APPLICATOR STYLE CONVERSION CHART									
CONVERT TO	PART NUMBERS REQUIRED								
-	-	-	-	-	-	-	-	-	-
SERVO LATCH PLATE	2119951-1	1901697-1	8-2150479-5	-	-	-	-	-	2168400-7 (QUANTITY 2)
SMART APPLICATOR	2161326-1	-	8-2150479-4	-	-	-	-	-	-
-	-	-	-	-	-	-	-	-	-
PNEUMATIC FEED	2119950-1	1-2119792-0	-	2119641-2	-	-	-	-	2063440-1

SET UP GAUGE	LOC	DIST	REVISIONS			
2119599-2	A	66	REV	DATE	BY	APPV
-	-	-	1	-	-	-
-	-	-	2	-	-	-

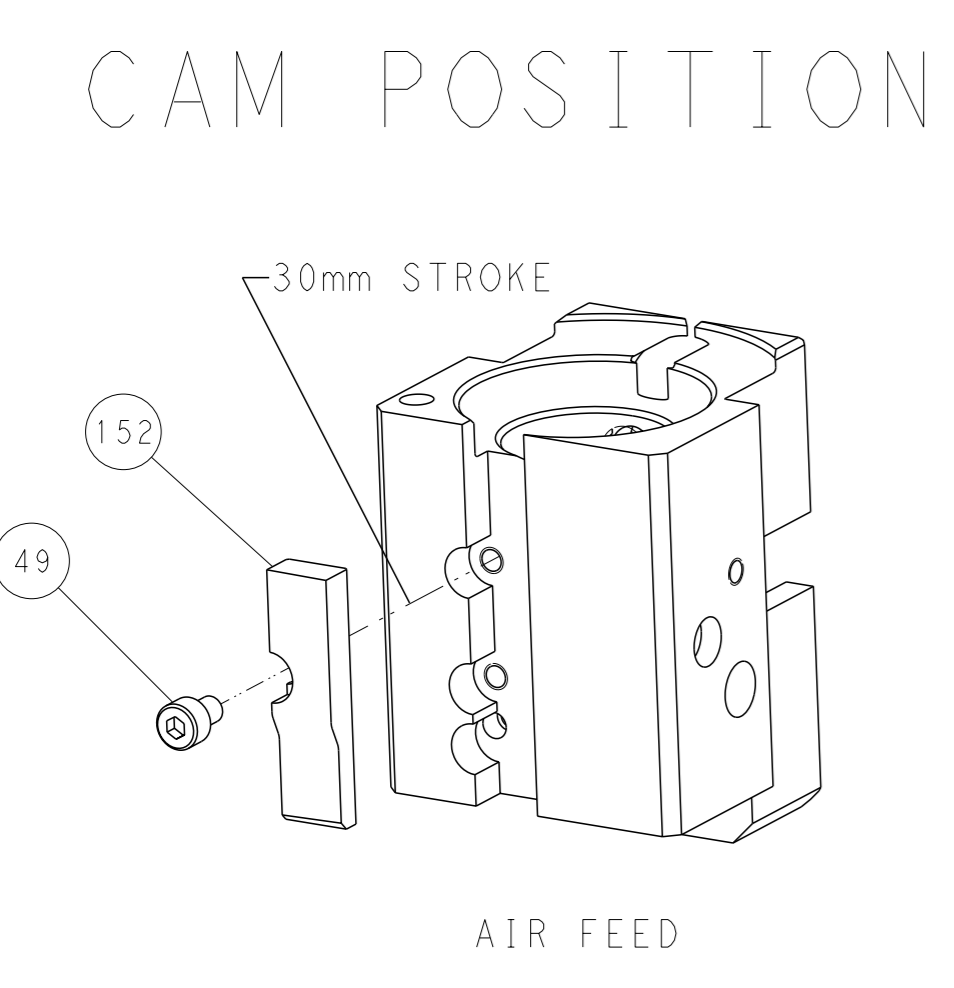
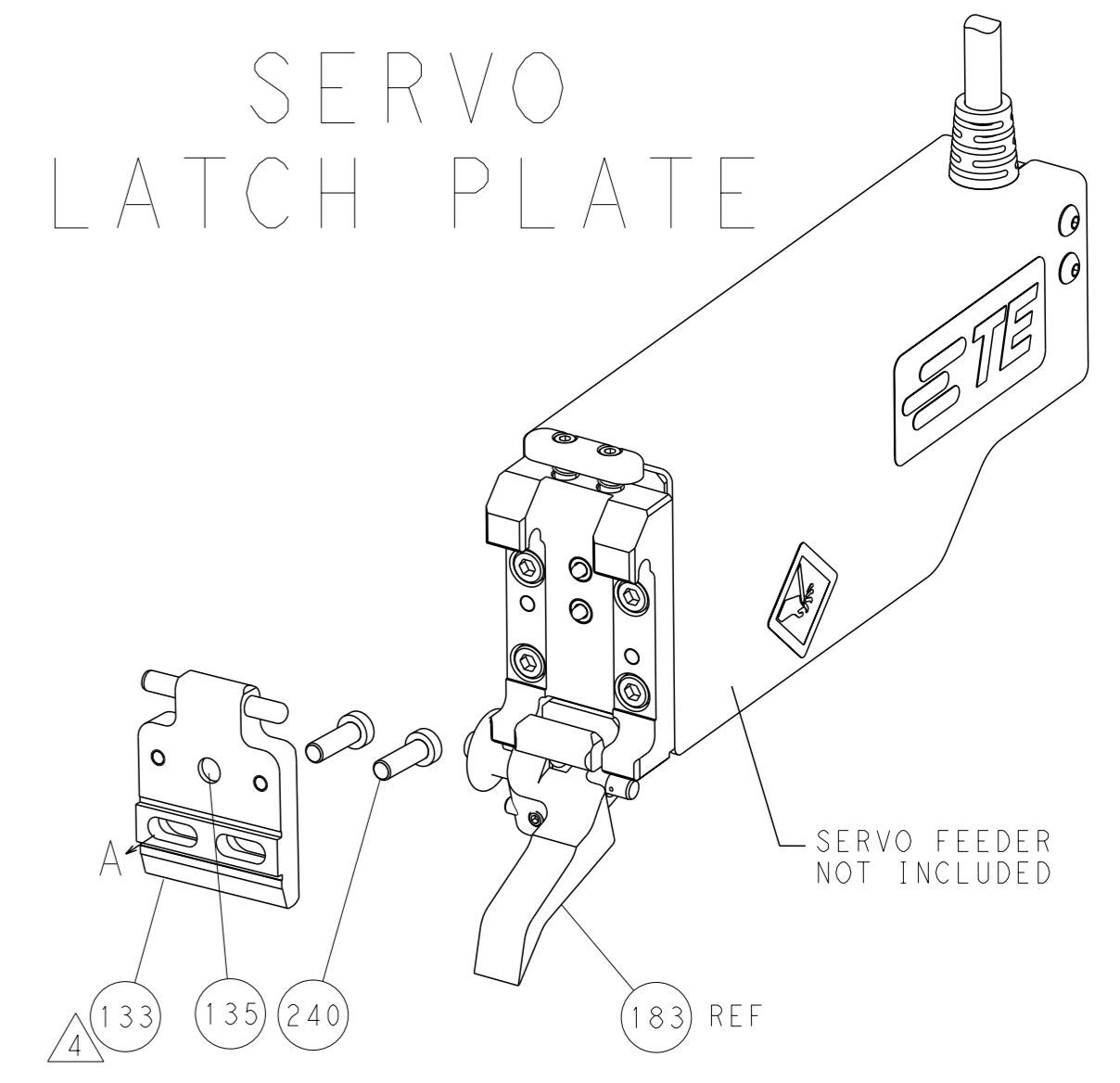
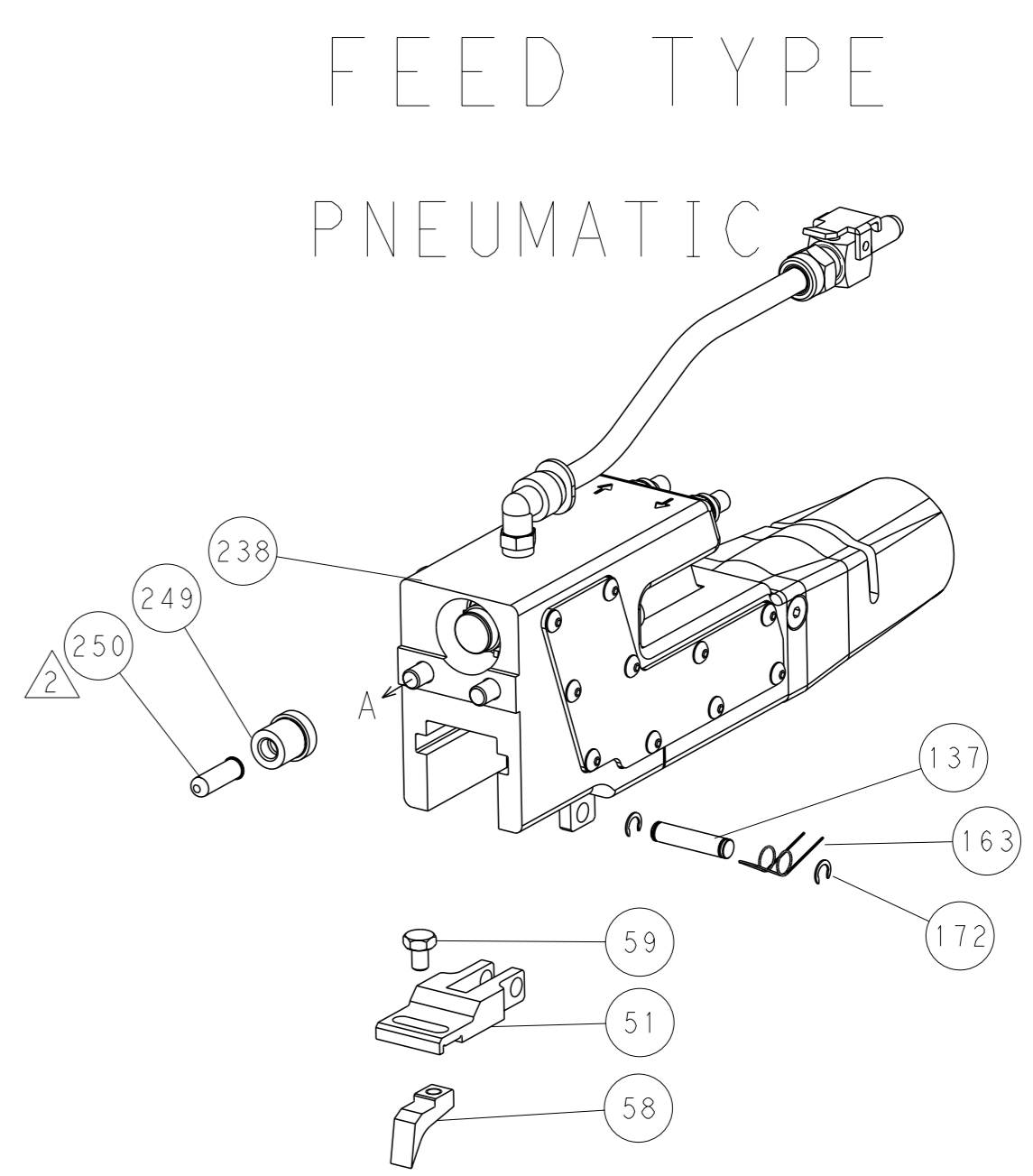
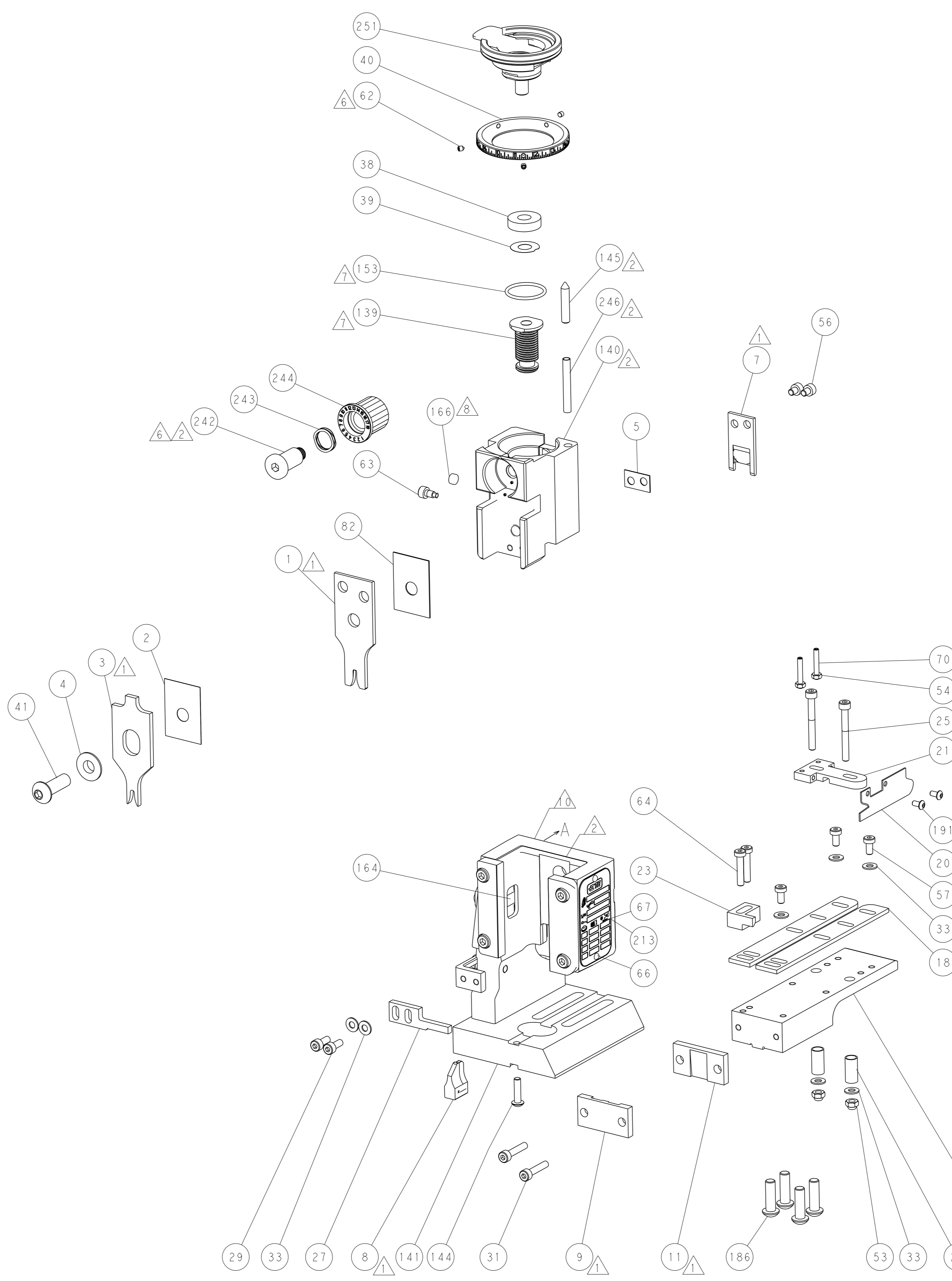
-	1	1	1	2119782-1	FINE ADJUST HEAD ASM, PACIFIC STYLE	251
-	-	-	1	2119640-1	PUSH ROD, AIR FEED	250
-	-	-	1	2079988-1	BUSHING, LCH5-12, MISUMI	249
-	1	1	1	1-22279-3	SPRING, COMPRESSION	246
-	1	1	1	2119082-4	CAM, SNAIL, INSULATION ADJUSTMENT	244
-	1	1	1	2079764-1	WASHER, WAVE SPRING, CREST-TO-CREST	243
⁶	-	1	1	2119083-1	RETAINER, INSULATION DIAL	242
-	-	2	-	2168400-7	SHCS, LOW HEAD, RoHS, M5 X 10	240
-	-	-	1	2063440-1	AIR FEED MODULE	238
-	-	1	-	2119740-2	TAG, IDENTIFICATION	213
-	2	2	2	1-2079383-0	SCR, BHSC, RoHS (M3 X 6)	191
-	4	4	4	2079383-9	SCR, BHSC, RoHS (M6 X 20)	186
-	-	REF	-	1901697-1	FEED FINGER ASSEMBLY, EF	183
-	-	-	2	21045-3	RING, RETAIN, EXTERN, 3/16 CRESCENT	172
-	1	1	1	994969-1	MAGNET, RARE EARTH HIGH ENERGY	166
-	REF	REF	REF	994970-2	COUNTER, MAGNETIC	164
-	-	-	1	240638-1	SPRING, FEED FINGER	163
-	1	1	1	8-21084-1	O-RING, .801 ID, .070 DIA. MAT.	153
-	-	-	1	2119641-2	FEED CAM, AIR FEED	152
-	1	1	1	2119798-2	DETENT PIN	145
-	1	1	1	2079383-8	SCR, BHSC, RoHS (M4 X 16)	144
-	1	1	1	2119655-6	APPLICATOR BASIC ASSEMBLY, EF	141
-	1	1	1	2119651-1	RAM, ASIAN STYLE, END FEED	140
-	1	1	1	2119092-2	BOLT, ADJUSTMENT	139
-	-	-	1	3-23627-7	PIN, RETAIN, GRVD, 3/16 X .854	137
-	-	REF	-	SEE NOTE 4	MEMORY CHIP, PROGRAMMED	135
-	-	1	-	1633743-1	SERVO FEED LATCH ASM	133
-	1	1	1	455888-5	SPACER, CRIMPER	82
-	1	1	1	2119956-2	DOCUMENTATION PACKAGE	71
-	2	2	2	3-18032-3	SCR, SET, FLT POINT M3 X 20.0	70
-	1	-	1	2119740-1	TAG, IDENTIFICATION	67
-	2	2	2	2168078-1	SCREW, DRIVE, RH, RoHS, 2 x .188	66
-	2	2	2	2168400-5	SHCS, LOW HEAD, RoHS, M4 X 20	64
⁶	-	1	1	2119793-1	LIMITER, ADJUSTMENT BOLT	63
-	3	3	3	992763-5	SCR, SET, SOC, CONE POINT, M3 x 4.0	62
-	-	-	1	5-18022-5	SCR, HEX HD CAP, M4 X 6.0	59
-	-	-	1	2063961-2	FEED FINGER	58
-	3	3	3	2168400-4	SHCS, LOW HEAD, RoHS, M4 X 8	57
-	2	2	2	1-2168083-4	SCR, SKT HD CAP, RoHS, M4 X 5	56
-	2	2	2	5018030-1	NUT, HEX, REG, RoHS, M3	54
-	2	2	2	986965-8	NUT, LOCK, HEX, TORQUE (M4)	53
-	-	-	1	2119799-1	HOLDER, FEED FINGER, AF	51
-	-	-	1	18023-9	SCR, SKT HD CAP M4 X 6.0	49
-	1	1	1	2079383-7	SCR, BHSC, RoHS (M8 X 25)	41
-	1	1	1	2119645-1	DISC, NUMBERED FA WIRE ADJUSTMENT	40
-	1	1	1	2119957-1	APPLICATOR SHIM PACK	39
-	1	1	1	1-2119644-2	RAM WASHER, PRECISION	38
-	7	7	7	1-18028-2	WASHER, FLAT, REG M4	33
-	2	2	2	2168083-9	SCR, SKT HD CAP, RoHS, M4 X 20	31
-	2	2	2	1-2168083-0	SCR, SKT HD CAP, RoHS, M4 X 10	29
-	1	1	1	1-690455-2	STRIPPER, FRONT CASTING	27
-	2	2	2	1-2168083-6	SCR, SKT HD CAP, RoHS, M4 X 35	25
-	1	1	1	1752371-5	PLATE, STRIP GUIDE	24
-	1	1	1	2-240825-1	PLATE, STRIP HOLD DOWN	23
-	2	2	2	22281-9	SPRING, COMPRESSION	22
-	1	1	1	1-1633168-1	ARM, STOCK DRAG	21
-	1	1	1	2280330-1	DRAG, SKATE	20
-	2	2	2	1901259-5	GUIDE, LOWER STRIP	18
¹	-	1	1	240644-9	PLATE, REAR SHEAR	11
-	-	-	-	-	-	10
¹	-	1	1	6-690482-3	PLATE, FRONT SHEAR	9
¹	1	1	1	1-1803060-5	ANVIL, COMBINATION, END FEED	8
¹	-	1	1	1-2217206-0	BLADE, SLUG	7
-	-	-	-	-	-	6
-	1	1	1	2-240641-1	SPACER	5
-	1	1	1	238009-1	BLOCK, FL CRIMPER SPACER	4
¹	1	1	1	5-1633965-5	CRIMPER, INSULATION O PREMIUM	3
¹	-	1	1	455888-1	SPACER, CRIMPER	2
¹	1	1	1	2-456406-9	CRIMPER, WIRE PREMIUM	1

***WARNING**
ON INSTALLATION, SET WIRE DISC, ITEM 40 TO LARGEST WIRE SIZE SETTING. USE OF SETTINGS BELOW MINIMUM REQUIRED CRIMP HEIGHT SETTING WILL CAUSE DAMAGE TO CRIMP TOOLING.

PACIFIC VERSION
Shown on sheets 3 of 4 & 4 of 4
(Atlantic version shown on sheets 1 of 4 & 2 of 4)

DIMENSIONS:		TOLERANCES UNLESS OTHERWISE SPECIFIED:		DWG		REV	
mm	0 PLC ±	1 PLC ±0.5	2 PLC ±0.13	3 PLC ±0.13	4 PLC ±0.0001	ANGLES ±	FINISH ±
MATERIAL				WEIGHT	SCALE	SHEET	REV
Customer Accessible Production Drawing				SCALE 1:1	SHEET 3 of 4	REV A	

LOC	DIST	REVISIONS					
A	66	P	LYR	DESCRIPTION	DATE	OWN	APVD
		-		SEE SHEET 1			



PACIFIC VERSION
 Shown on sheets 3 of 4 & 4 of 4
 (Atlantic version shown on sheets 1 of 4 & 2 of 4)

DIMENSIONS: mm 		TOLERANCES UNLESS OTHERWISE SPECIFIED: 0 PLC ±.5 1 PLC ±0.5 2 PLC ±0.13 3 PLC ±0.013 4 PLC ±0.001 ANGLES FINISH ±.		OWN: K. STAKEM 08SEPT2014 CHK: G. BAILEY 08SEPT2014 APVD: J. ERLIN 08SEPT2014 PRODUCT SPEC: APPLICATION SPEC: WEIGHT: Customer Accessible Production Drawing		NAME: Ocean End Feed Applicator SIZE: A1 CAGE CODE: 00779 DRAWING NO: C=2150479 SCALE: 1:1 SHEET: 4 of 4 REV: A		RESTRICTED TO:	
-----------------------	--	--------------------------------------------------------------------------------------------------------------------------------------	--	--------------------------------------------------------------------------------------------------------------------------------------------------------------------------------	--	-----------------------------------------------------------------------------------------------------------------------------------	--	----------------	--