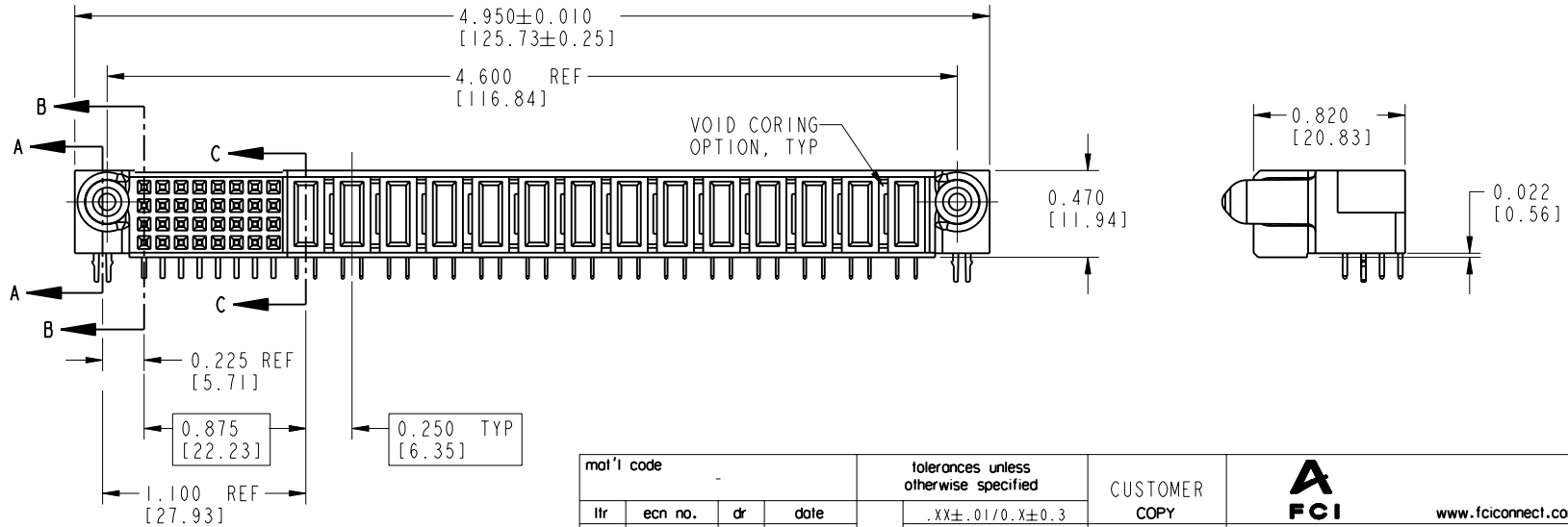
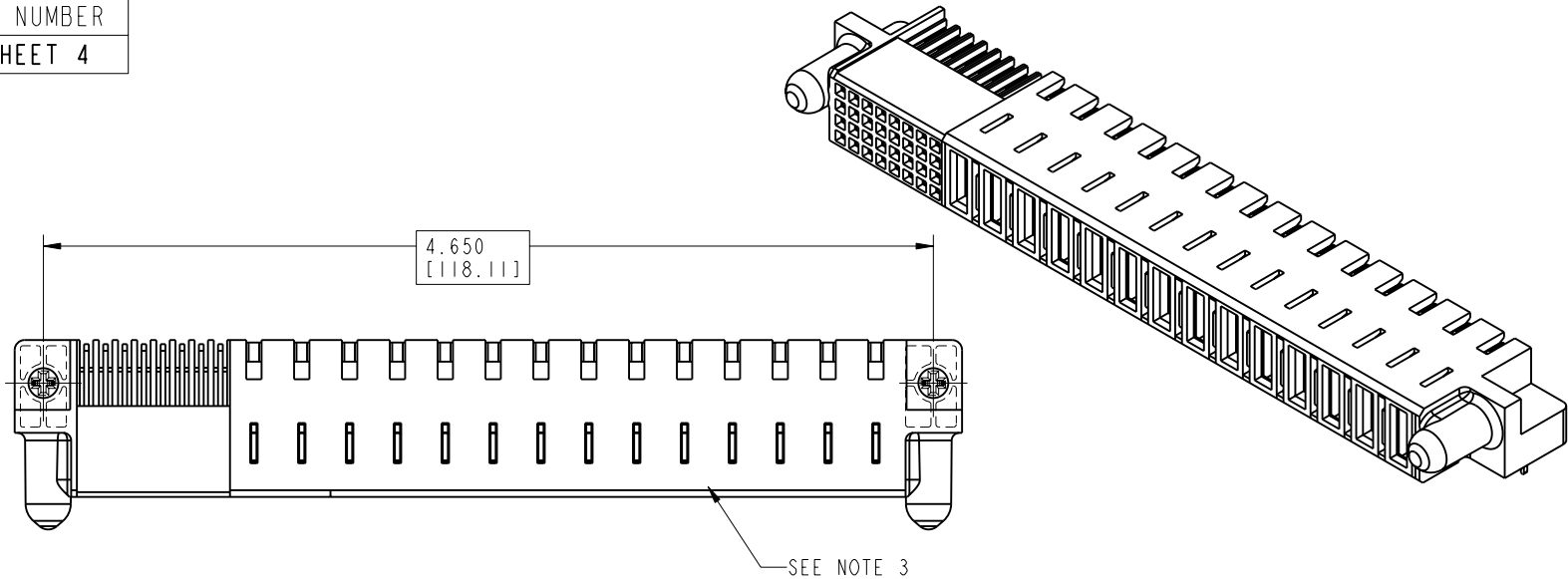


Tous droits strictement réservés. Reproduction ou communication o des liers interdite sous quelque forme que ce soit sans autorisation écrite du propriétaire. Propriete de c FCI. Droits de reproduction FCI.

All rights strictly reserved. Reproduction or issue to third parties in any form, whomever is not permitted without written authority from the proprietor. Property of FCI. Copyright FCI.

PRODUCT NUMBER
SEE SHEET 4



mat'l code				tolerances unless otherwise specified		CUSTOMER COPY	www.fciconnect.com		
ltr	ecn no.	dr	date	linear	.XX±.01/0.X±0.3		title		
G	DG05-0363	GuoJM	09/28/05		.XXX±.005/0.XX±0.13		14P + 32S RIGHT ANGLE RECEPTACLE		
				angles	.XXXX±.0020/.XXX±.051		product family	PwrBlade	code
				dr	S. ROYER 10-01-99	INCH / MM scale 1:1	size	dwg no	213
				engr	J. BROWN 10-01-99		A	51402	SHEET 1 OF 4
				chr	J. BROWN 10-01-99				
				appd	J. BROWN 10-01-99				
sheet index	revision sheet	G 1	G 2	G 3	G 4				

THIS FILE WAS ORIGINALLY CREATED IN THE PRO ENGINEER ENVIRONMENT AND ANY FUTURE REVISIONS TO THIS FILE MUST BE MADE IN THE PRO ENGINEER ENVIRONMENT

form no. 7530-001-103

cage code 22526

PDM: Rev:G

STATUS: Released

Printed: Dec 20, 2010

Tous droits strictement réservés. Reproduction ou communication o des liers interdite sous quelque forme que ce soit sans autorisation écrite du propriétaire. Propriete de c FCI. Droits de reproduction FCI.



All rights strictly reserved. Reproduction or issue to third parties in any form, whomever is not permitted without written authority from the proprietor. Property of FCI. Copyright FCI.

PRODUCT NUMBER
SEE SHEET 4

CONNECTOR NOTES:

1. HOUSING MATERIAL: UL 94V-0 GLASS FILLED HIGH TEMP THERMO PLASTIC
SIGNAL CONTACT MATERIAL: COPPER ALLOY
POWER CONTACT: COPPER ALLOY

2. PLATING:
51402-XXYYY Singal Pin:30u"/0.76um Au OVER 50u"/1.27um Ni ON THE CONTACT AREA,
AND 100u"/2.54um SnPb PLATING OVER 50u"/1.27um Ni ON THE TERMINATION SECTION.
Power Pin:30u"/0.76um Au OVER 50u"/1.27um Ni ON THE CONTACT AREA,
AND 100u"/2.54um SnPb PLATING OVER 50u"/1.27um Ni ON THE TERMINATION SECTION.

51402-XXYYLFF Singal Pin:30u"/0.76um Au OVER 50u"/1.27um Ni ON THE CONTACT AREA,
AND 78u"/2.00um Sn PLATING OVER 50u"/1.27um Ni ON THE TERMINATION SECTION.
Power Pin:30u"/0.76um Au OVER 50u"/1.27um Ni ON THE CONTACT AREA,
AND 78u"/2.00um Sn PLATING OVER 50u"/1.27um Ni ON THE TERMINATION SECTION.

PART NUMBER 51402-XXYYLFF MEETS EUROPEAN UNION DIRECTIVE AND OTHER COUNTRY REGULATIONS AS DESCRIBED IN GS-22-008.

THE HOUSING WILL WITHSTAND EXPOSURE TO 260° PEAK TEMPERATURE FOR 10 SECONDS IN A WAVE SOLDER APPLICATION WITH A CIRCUIT BOARD.

3. MANUFACTURER'S NAME, P/N, AND DATE CODE TO APPEAR ON THIS SURFACE.

PCB NOTES:

- 4. ALL DIMENSIONS ARE BASIC UNLESS OTHERWISE SPECIFIED.
- 5. ALL THRU HOLES ARE LOCATED WITH A TRUE POSITION OF 0.004".
- 6. ALL DIAMETERS ARE FINISHED HOLE SIZES
- 7. Ø0.098 THRU HOLES ARE UNPLATED.

THIS FILE WAS ORIGINALLY CREATED IN THE PRO ENGINEER ENVIRONMENT AND ANY FUTURE REVISIONS TO THIS FILE MUST BE MADE IN THE PRO ENGINEER ENVIRONMENT

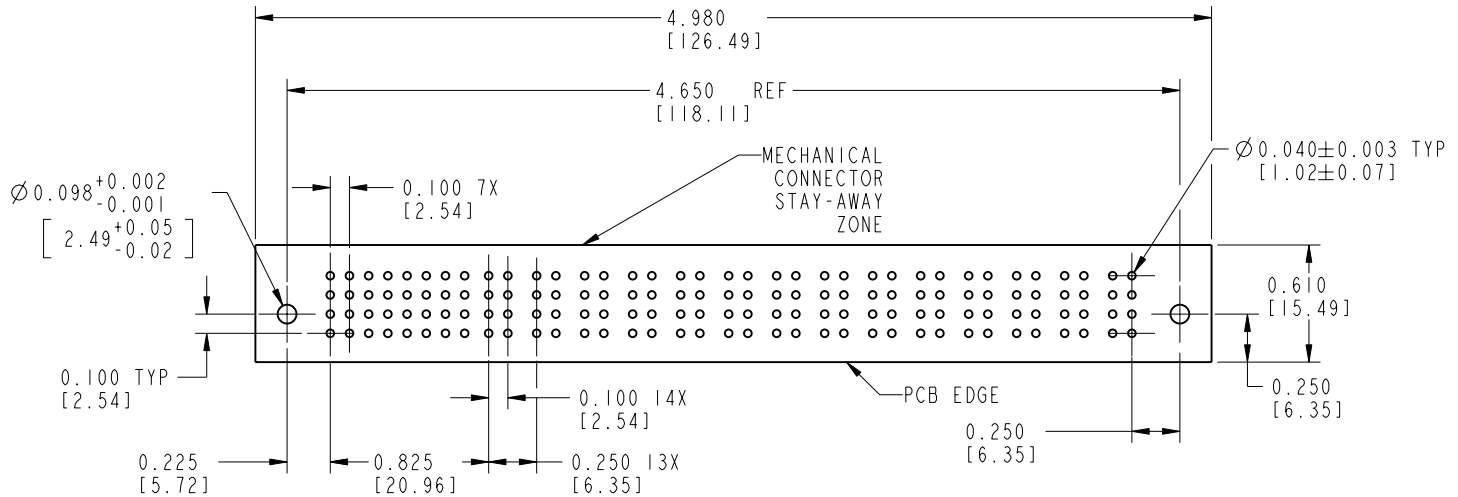
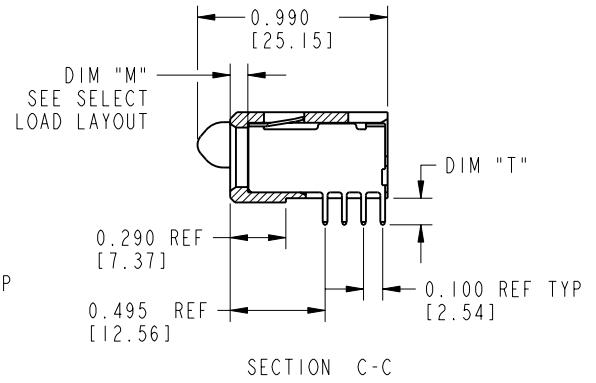
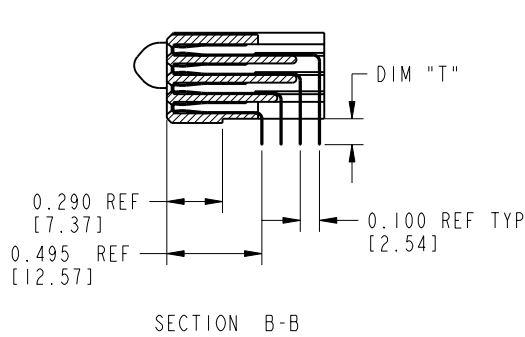
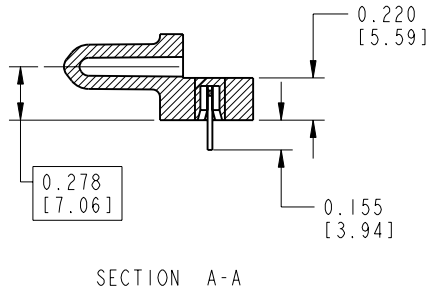
mat'l code		SEE NOTES		tolerances unless otherwise specified		CUSTOMER		www.fciconnect.com	
lfr	ecn no.	dr	date	linear	.XX±.01/0.X±0.3		COPY		
G					.XXX±.005/0.XX±0.13		projection		
				angles	.XXX±.0020/.XXX±.051		INCH / MM		title 14P + 32S RIGHT ANGLE RECEPTACLE
					0°±2°		scale		
				dr	S. ROYER	10-01-99	product family		PwrBlade code 213
				engr	J. BROWN	10-01-99	size		
				chr	J. BROWN	10-01-99	dwg no		A 51402 SHEET 2 OF 4
				appd	J. BROWN	10-01-99	A		
sheet index	revision sheet								

Tous droits strictement réservés. Reproduction ou communication o des liens interdite sous quelque forme que ce soit sans autorisation écrite du propriétaire. Propriété de c FCI. Droits de reproduction FCI.

FCI

All rights strictly reserved. Reproduction or issue to third parties in any form, whenever is not permitted without written authority from the proprietor. Property of FCI. Copyright FCI.

PRODUCT NUMBER
SEE SHEET 4



RECOMMENDED PCB LAYOUT

mat'l code				SEE NOTES		tolerances unless otherwise specified		CUSTOMER		 www.fciconnect.com	
lfr	ecn no.	dr	date	linear	.XX±.01/0.X±0.3	projection		COPY		title	
G				angles	.XXX±.005/0.XX±0.13					14P + 32S RIGHT ANGLE RECEPTACLE	
				dr	.XXX±.0020/.XXX±.051			INCH / MM		product family	
				engr	0°±2°	scale		1:1		PwrBlade	
				chr	S. ROYER 10-01-99					code	
				appd	J. BROWN 10-01-99					213	
					J. BROWN 10-01-99					size	
					J. BROWN 10-01-99					51402	
sheet index		revision sheet								SHEET 3 OF 4	

THIS FILE WAS ORIGINALLY CREATED IN THE PRO ENGINEER ENVIRONMENT AND ANY FUTURE REVISIONS TO THIS FILE MUST BE MADE IN THE PRO ENGINEER ENVIRONMENT

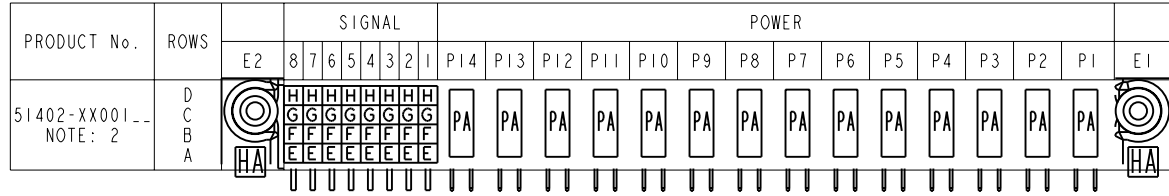
Tous droits strictement réservés. Reproduction ou communication o des liers interalle sous quelque forme que ce soit sans autorisation écrite du propriétaire. Propriete de c FCI. Droits de reproduction FCI.

All rights strictly reserved. Reproduction or issue to third parties in any form, whenever is not permitted without written authority from the proprietor. Property of FCI. Copyright FCI.

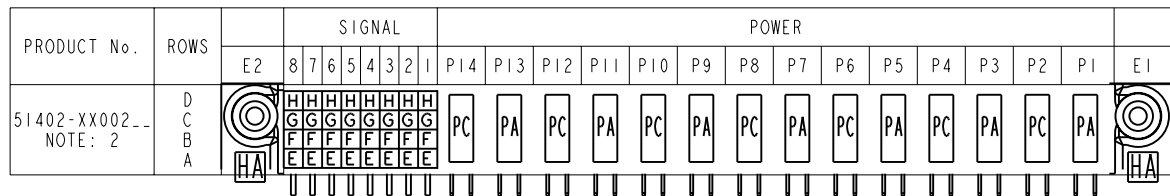
A
FCI

PRODUCT NUMBER
SEE TABLE

ITEM NO.	QTY	DIM "M" MATING LENGTH ±.010		DIM "T" TAIL LENGTH ±010		CONTACT TYPE
E	8	N/A	[N/A]	0.135	[3.43]	SIGNAL
F	8	N/A	[N/A]	0.135	[3.43]	SIGNAL
G	8	N/A	[N/A]	0.135	[3.43]	SIGNAL
H	8	N/A	[N/A]	0.135	[3.43]	SIGNAL
PA	14	0.042	[1.07]	0.135	[3.43]	POWER
HA	2	N/A	[N/A]	N/A	[N/A]	HOLD-DOWN



ITEM NO.	QTY	DIM "M" MATING LENGTH ±.010		DIM "T" TAIL LENGTH ±.010		CONTACT TYPE
E	8	N/A	[N/A]	0.135	[3.43]	SIGNAL
F	8	N/A	[N/A]	0.135	[3.43]	SIGNAL
G	8	N/A	[N/A]	0.135	[3.43]	SIGNAL
H	8	N/A	[N/A]	0.135	[3.43]	SIGNAL
PA	7	0.042	[1.07]	0.135	[3.43]	POWER
PC	7	0.092	[2.34]	0.135	[3.43]	POWER
HA	2	N/A	[N/A]	N/A	[N/A]	HOLD-DOWN



mat'l code				SEE NOTES				tolerances unless otherwise specified				CUSTOMER					
lfr	ecn no.	dr	date	linear	.XX±.01/0.X±0.3			COPY				www.fciconnect.com title 14P + 32S RIGHT ANGLE RECEPTACLE					
G				angles	.XXX±.005/0.XX±0.13			projection									
				dr	.XXX±.0020/.XXX±.051			INCH / MM				product family PwrBlade		code 213			
				engr	0°±2°			scale 1:1				size A		SHEET 4 OF 4			
				chr	S. ROYER	10-01-99							dwg no 51402				
				appd	J. BROWN	10-01-99											
					J. BROWN	10-01-99											
sheet index		revision sheet															

THIS FILE WAS ORIGINALLY CREATED IN THE PRO ENGINEER ENVIRONMENT AND ANY FUTURE REVISIONS TO THIS FILE MUST BE MADE IN THE PRO ENGINEER ENVIRONMENT