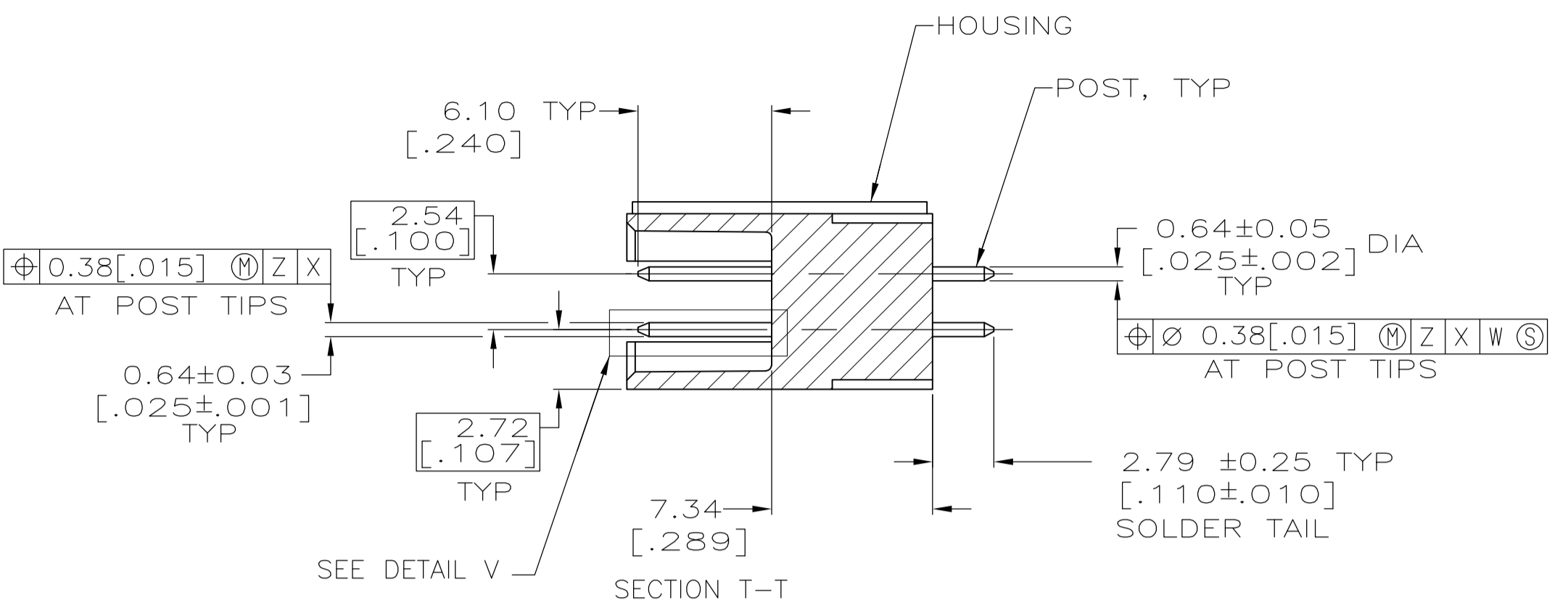
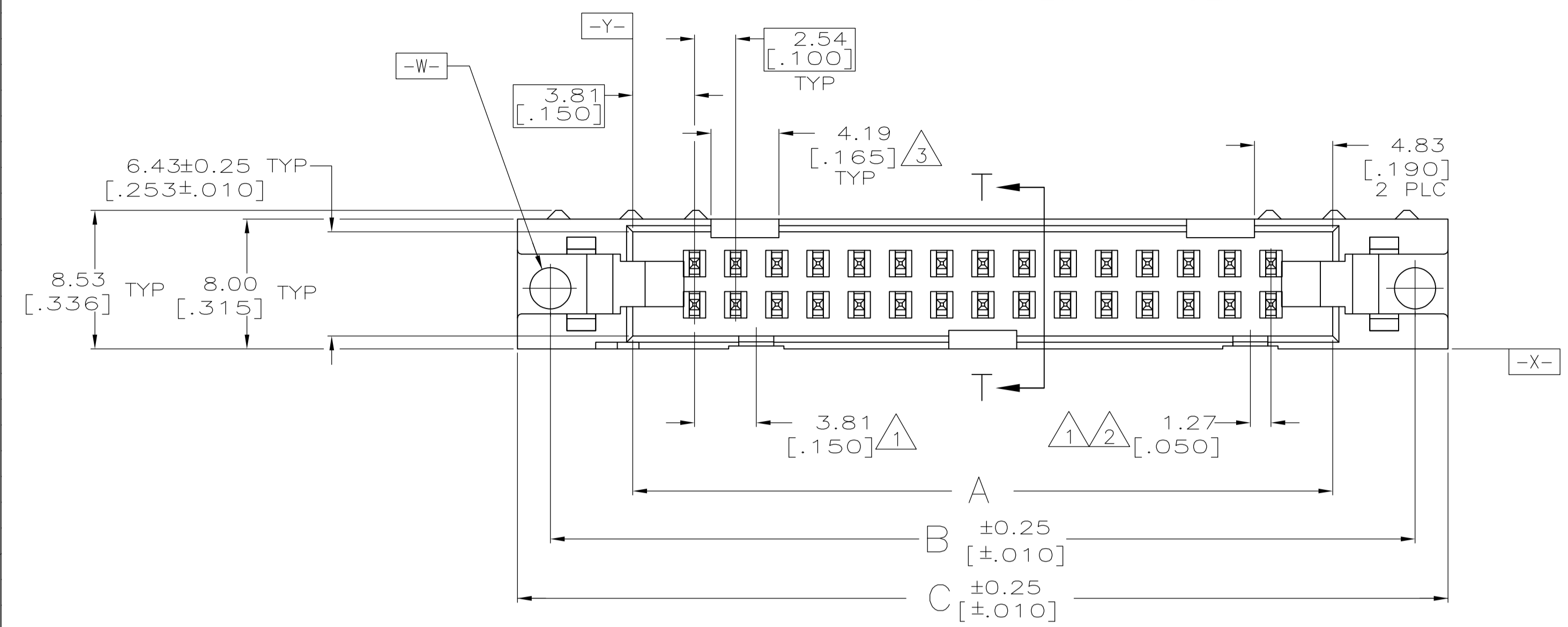
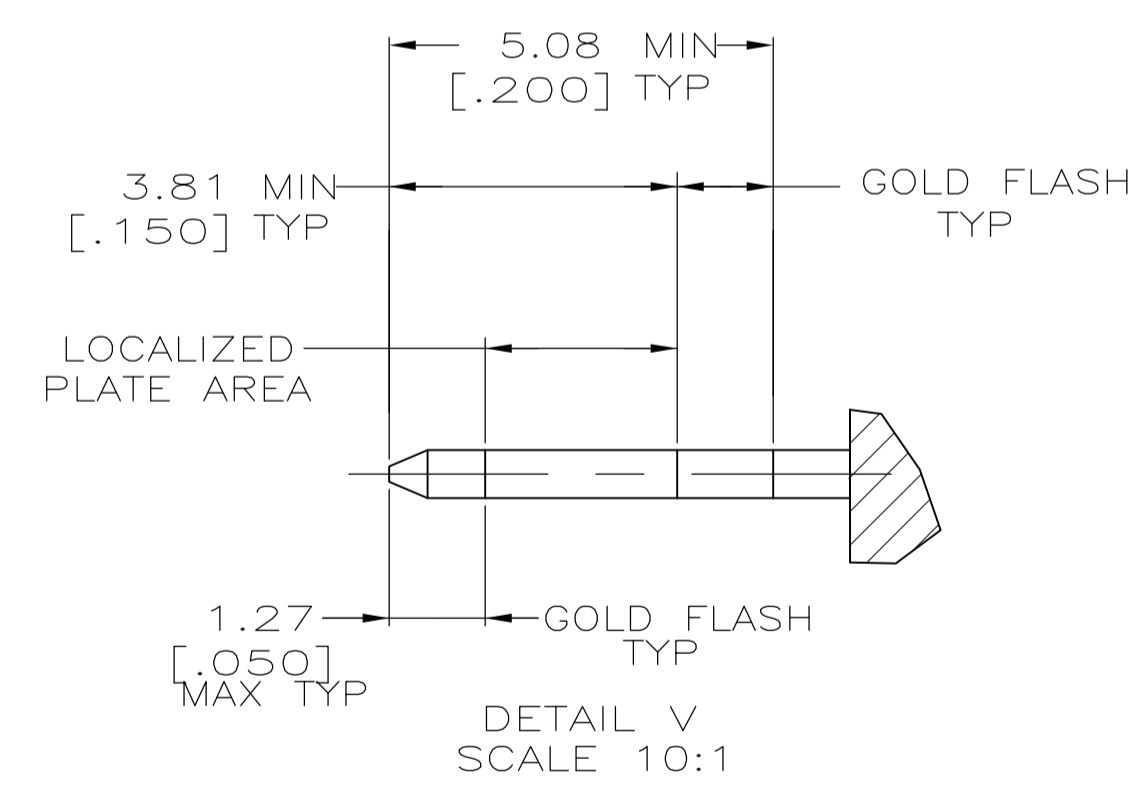
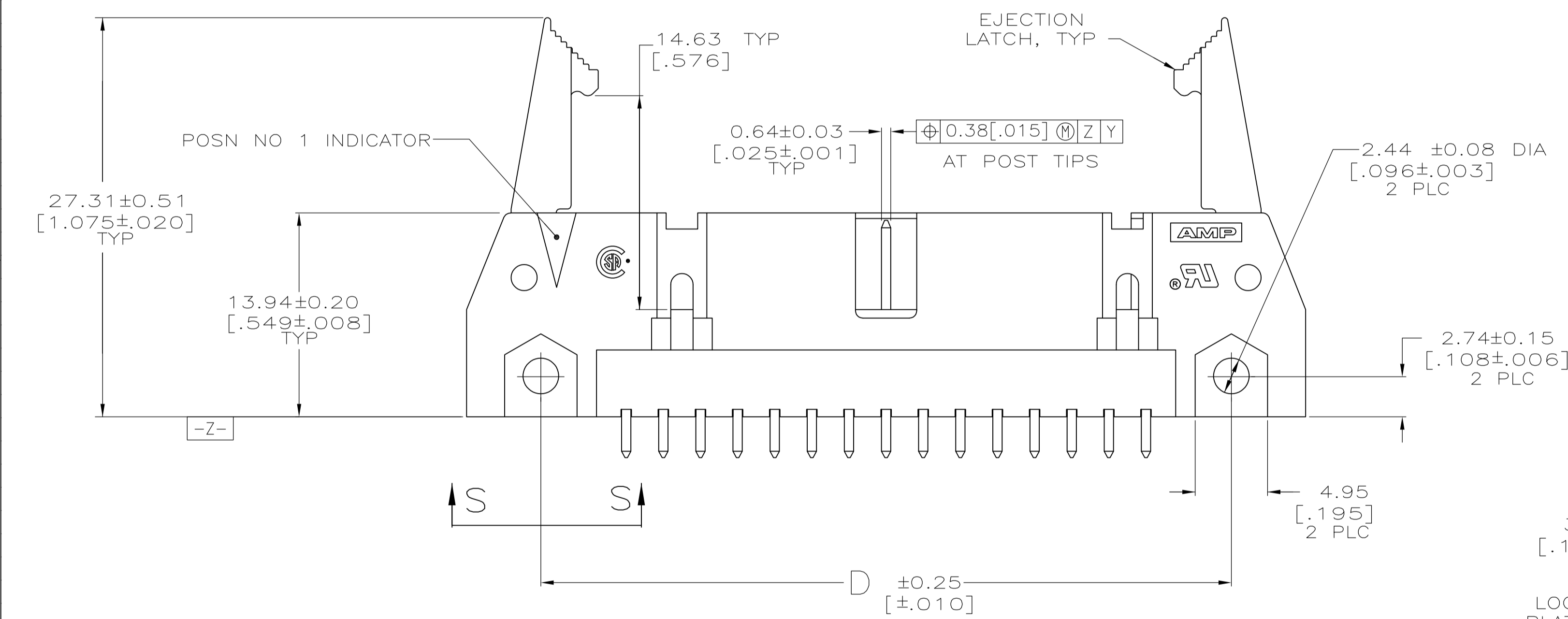


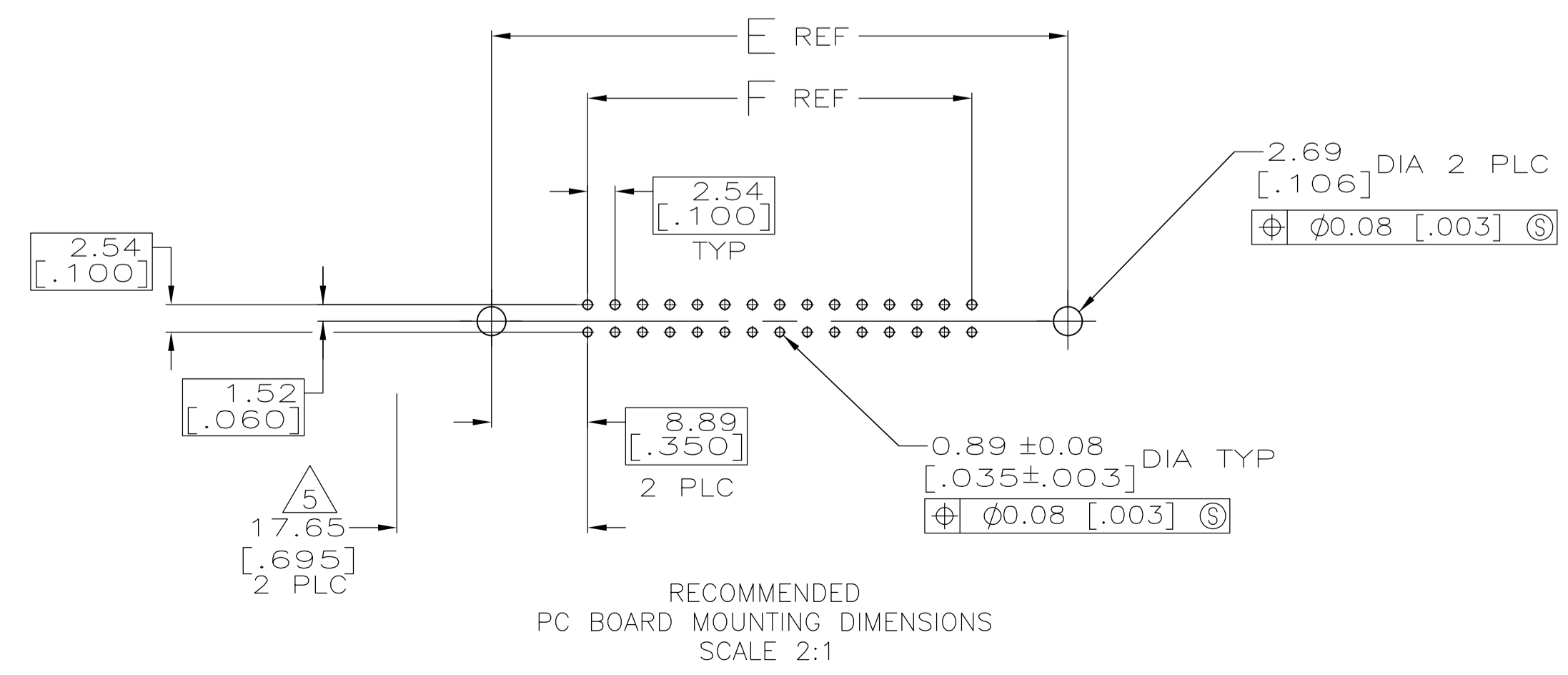
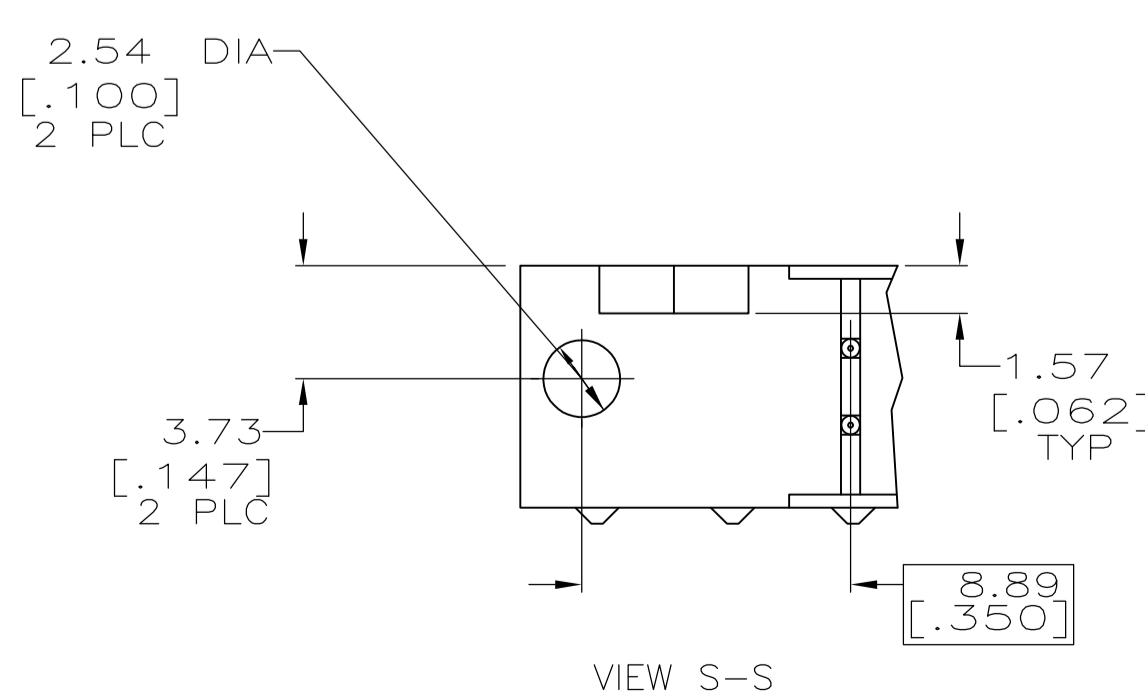
EJECTION LATCHES OMITTED IN THIS VIEW FOR CLARITY



- 1. COORDINATE DIMENSION APPLIES FROM BASIC LOCATION.
- 2. 10 AND 14 POSITION SIZES CONTAIN ONLY ONE SLOT FOR SNAP-IN POLARIZER (MILITARY POLARIZATION) LOCATED AS SHOWN.
- 3. 10 POSITION SIZES CONTAIN ONLY ONE SLOT FOR DUAL POLARIZATION, LOCATED AS SHOWN.
- 4. RECOMMENDED PRINTED CIRCUIT BOARD THICKNESS IS 1.57 [.062].
- 5. DISTANCE REQUIRED BY EJECTION LATCHES IN THE OPEN POSITION.
- 6. POSTS:
GOLD FLASH OVER PALLADIUM-NICKEL PLATE, 0.38µm [.000015] MIN TOTAL ON THE LOCALIZED PLATE AREA,
2.54µm [.000100] MIN TIN-LEAD PLATE ON THE SOLDER-TAIL,
1.27µm [.000050] MIN NICKEL UNDERPLATE ON THE ENTIRE POST.
OR
0.38µm [.000015] MIN GOLD PLATE ON THE LOCALIZED PLATE AREA,
2.54µm [.000100] MIN TIN-LEAD PLATE ON THE SOLDER-TAIL,
1.27µm [.000050] MIN NICKEL UNDERPLATE ON THE ENTIRE POST.
- 7. MATERIAL:
HOUSING: GLASS FILLED NYLON OR POLYESTER, 94V-0 RATED, BLACK.
POSTS: PHOSPHOR BRONZE OR BRASS.



| OBSELETE | 53.34 | 71.12 | 65.02 | 75.18 | 71.12 | 60.96 | | |
|----------|---------|---------|---------|---------|---------|---------|------------|-------------|
| | [2.100] | [2.800] | [2.560] | [2.960] | [2.800] | [2.400] | 44 | 1-499922-3 |
| | 78.74 | 96.52 | 90.42 | 100.58 | 96.52 | 86.36 | 64 | 1-499922-2 |
| | [3.100] | [3.800] | [3.560] | [3.960] | [3.800] | [3.400] | 60 | 1-499922-1 |
| | 73.66 | 91.44 | 85.34 | 95.50 | 91.44 | 81.28 | 50 | 1-499922-0 |
| | [2.900] | [3.600] | [3.360] | [3.760] | [3.600] | [3.200] | 40 | 499922-9 |
| | 60.96 | 78.74 | 72.64 | 82.80 | 78.74 | 68.58 | 34 | 499922-8 |
| | [2.400] | [3.100] | [2.860] | [3.260] | [3.100] | [2.700] | 30 | 499922-7 |
| | 48.26 | 66.04 | 59.94 | 70.10 | 66.04 | 55.88 | 26 | 499922-6 |
| | [1.900] | [2.600] | [2.360] | [2.760] | [2.600] | [2.200] | 24 | 499922-5 |
| | 40.64 | 58.42 | 52.32 | 62.48 | 58.42 | 48.26 | 20 | 499922-4 |
| | [1.600] | [2.300] | [2.060] | [2.460] | [2.300] | [1.900] | 16 | 499922-3 |
| | 35.56 | 53.34 | 47.24 | 57.40 | 53.34 | 43.18 | 14 | 499922-2 |
| | [1.400] | [2.100] | [1.860] | [2.260] | [2.100] | [1.700] | 10 | 499922-1 |
| | 30.48 | 48.26 | 42.16 | 52.32 | 48.26 | 38.10 | | |
| | [1.200] | [1.900] | [1.660] | [2.060] | [1.900] | [1.500] | | |
| | 27.94 | 45.72 | 39.62 | 49.78 | 45.72 | 35.56 | | |
| | [1.100] | [1.800] | [1.560] | [1.960] | [1.800] | [1.400] | | |
| | 22.86 | 40.64 | 34.54 | 44.70 | 40.64 | 30.48 | | |
| | [.900] | [1.600] | [1.360] | [1.760] | [1.600] | [1.200] | | |
| | 17.78 | 35.56 | 29.46 | 39.62 | 35.56 | 25.40 | | |
| | [.700] | [1.400] | [1.160] | [1.560] | [1.400] | [1.000] | | |
| | 15.24 | 33.02 | 26.92 | 37.08 | 33.02 | 22.86 | | |
| | [.600] | [1.300] | [1.060] | [1.460] | [1.300] | [.900] | | |
| | 10.16 | 27.94 | 21.84 | 32.00 | 27.94 | 17.78 | | |
| | [.400] | [1.100] | [.860] | [1.260] | [1.100] | [.700] | | |
| | F | E | D | C | B | A | NO OF POSN | PART NUMBER |



THIS DRAWING IS A CONTROLLED DOCUMENT. H. MOLL 4-23-90
 DIMENSIONS: mm [INCHES] TOLERANCES UNLESS OTHERWISE SPECIFIED:
 0 PLC ± -
 1 PLC ± -
 2 PLC ± 0.13[.005]
 3 PLC ± -
 4 PLC ± -
 ANGLES ± -

STE TE Connectivity
 PRODUCT SPEC 108-40018
 APPLICATION SPEC
 NAME: HEADER ASSY, UNIVERSAL, AMP-LATCH
 SIZE: A1 CAGE CODE: 00779 DRAWING NO: 499922
 WEIGHT: -
 CUSTOMER DRAWING SCALE: 4:1 SHEET: 1 OF 1 REV: H1