

PART NUMBER	REV	TERMINATOR	FEED TYPE	DESCRIPTION
1528914-1	A	LEADMAKER	MECH POST FEED	CUTS CARRIER
1528914-2	A	BENCH	MECH PRE FEED	CUTS CARRIER
1528914-6	A	LEADMAKER	MECH POST FEED	CONTINUOUS CARRIER
7-1528914-1	A	LEADMAKER	MECH POST FEED	-1 AND SPARE PARTS
7-1528914-2	A	BENCH	MECH PRE FEED	-2 AND SPARE PARTS
7-1528914-6	A	LEADMAKER	MECH POST FEED	-6 AND SPARE PARTS
7-1528914-7	A	-	-	SPARE PARTS KIT

CRIMP	SIZE	TYPE	RANGE
WIRE	1.20 [1.047 IN]	F	28-22 AWG or 0.08-0.35mm ²
INSUL	1.78 [1.070 IN]	F	1.15-1.80 [1.045-.071 IN]

WIRE STRIP LENGTH 2.30-2.80 [1.091-.110 IN]

APPL INSTRUCTIONS 408-8322 & 408-8490

TERMINAL MOLEX DOC NO. 63860-5100 rev A

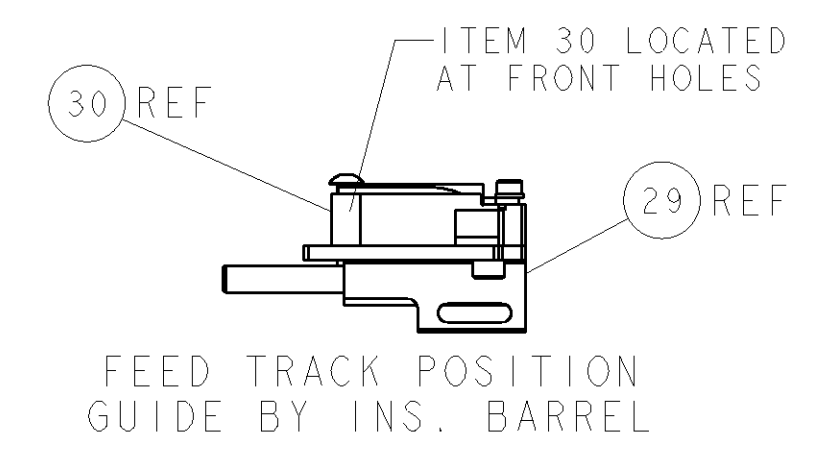
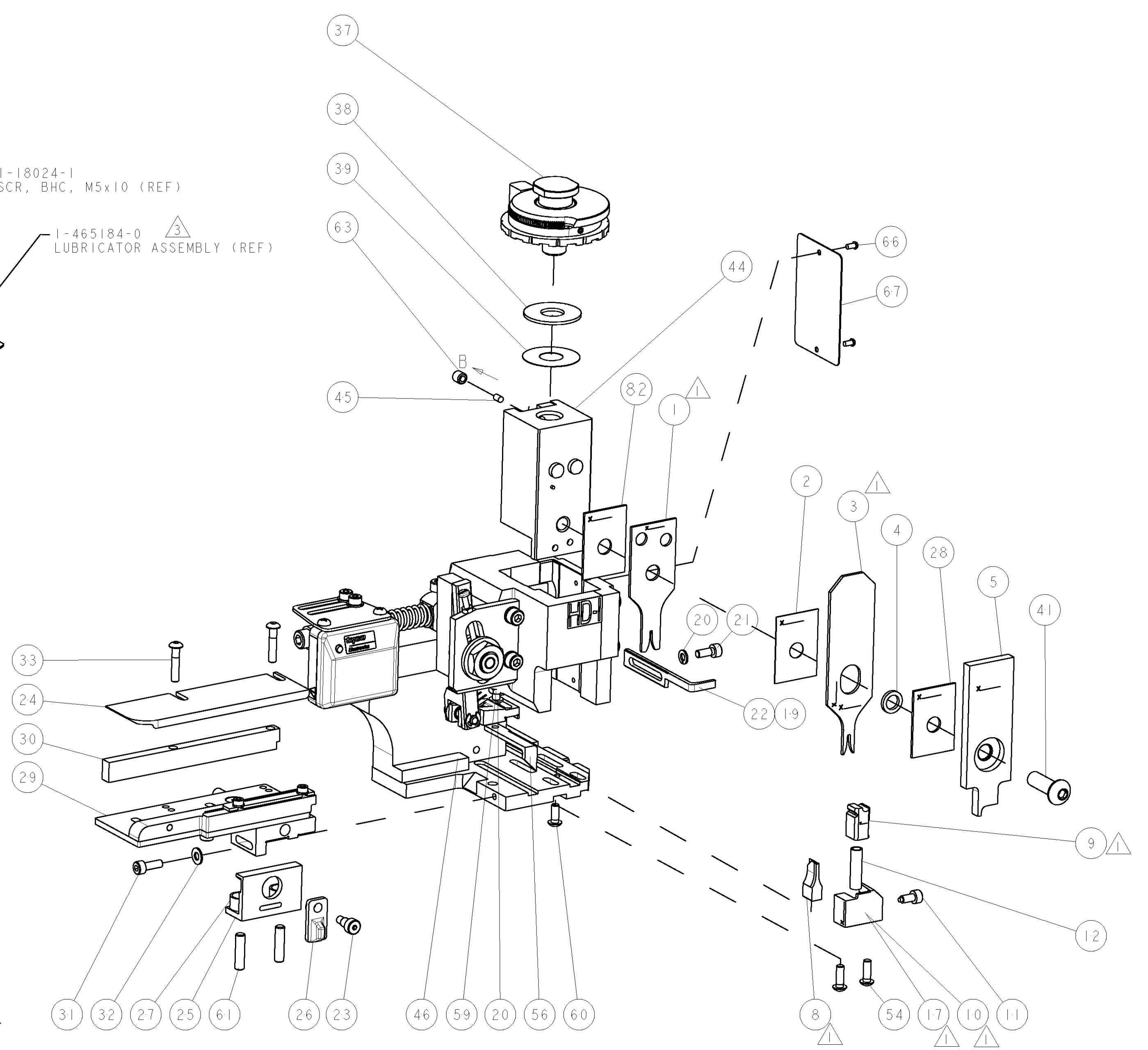
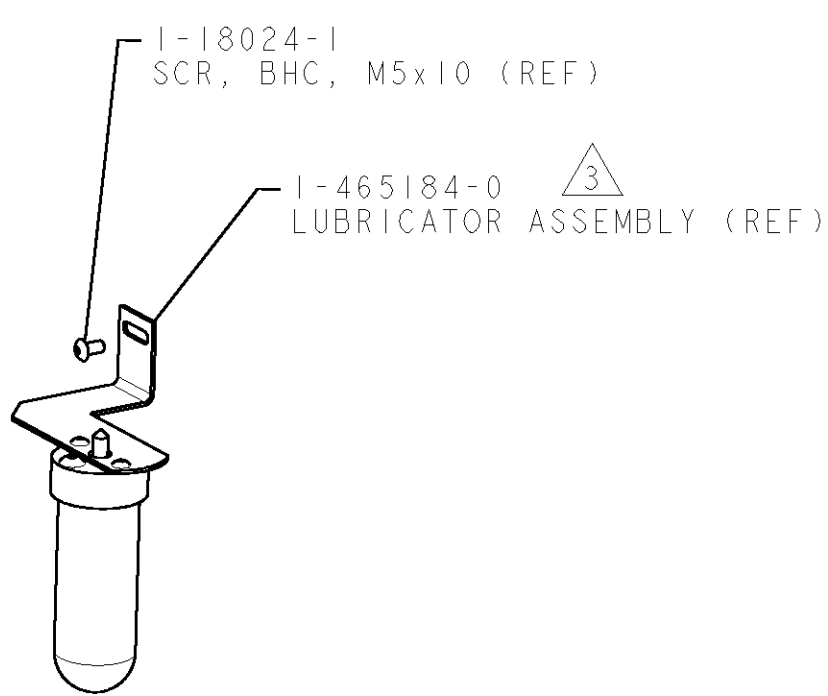
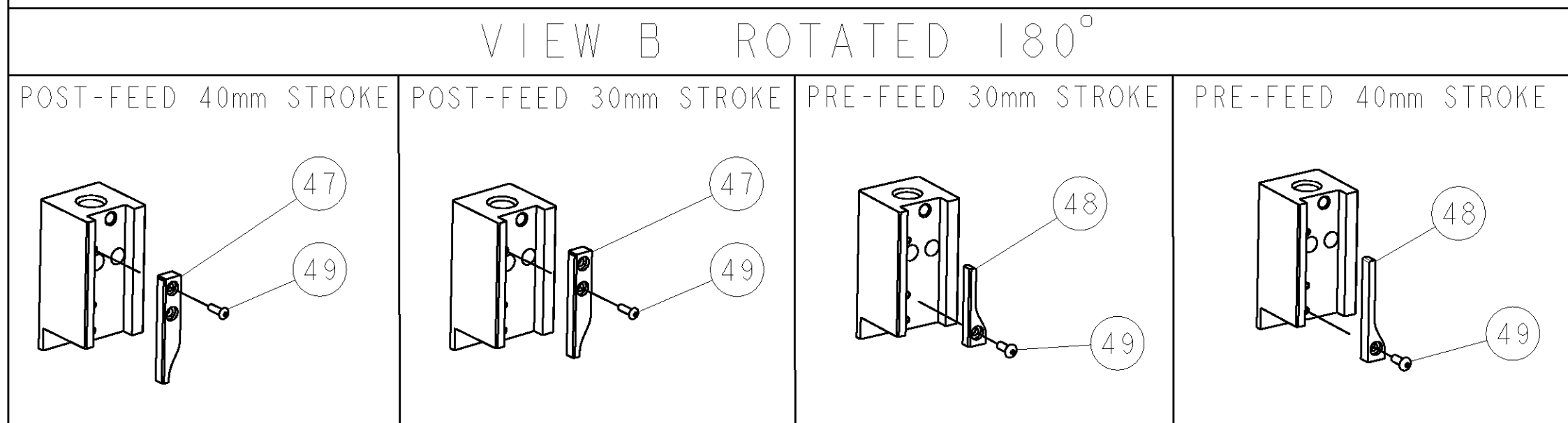
FEED APPL SPEC 7.40 [2.291 IN]

TE PN	MANUF'S PN		
1949705-1	50351-8000	-	-

WIRE SIZE	CRIMP HEIGHT	REF SETTING
22 AWG or 0.35mm ²	0.84-0.89 [1.033-.035 IN]	A 8
24 AWG or 0.20mm ²	0.76-0.81 [1.030-.032 IN]	B 2
26 AWG or 0.12mm ²	0.71-0.76 [1.028-.030 IN]	B 7
28 AWG or 0.08mm ²	0.67-0.72 [1.026-.028 IN]	C 0

- △ RECOMMENDED SPARE PARTS.
- 2. GREASE RAM, CAM, CAM FOLLOWER AND FEED ROD LIGHTLY.
- △ CERTAIN TERMINALS REQUIRE LUBRICATION. REFER TO THE APPLICATOR INSTRUCTION SHEET FOR MORE INFORMATION.
- 4. LUBRICATE DAILY PER THE APPLICATOR INSTRUCTION SHEET SUPPLIED WITH THE APPLICATOR.
- △ ALL CRIMP DATA SUPPLIED BY THE TERMINAL MANUFACTURER.

* WARNING
ON INSTALLATION, SET WIRE DISC TO LARGEST WIRE SIZE SETTING. USE OF SETTINGS BELOW MIN. REQUIRED CRIMP HEIGHT SETTING WILL CAUSE DAMAGE TO CRIMP TOOLING.



SET UP GAGE 458637-3

REV	DATE	BY	CHK	APPV
A	02SEP2008	JUL	MC	

QTY	REV	DATE	BY	CHK	APPV	DESCRIPTION	DATE	BY	CHK	APPV	
-	-	-	-	-	-						73
-	-	-	-	-	-						72
-	1	1	1	1	1	1338705-3	DOCUMENTATION PACKAGE				71
-	-	-	-	-	-						70
-	-	-	-	-	-						69
-	-	-	-	-	-						68
-	1	1	1	1	1	461264-5	PLATE, IDENTIFICATION				67
-	2	2	2	2	2	21017-2	SCREW, DRIVE				66
-	-	-	-	-	-						65
-	-	-	-	-	-						64
-	1	1	1	1	1	3-18031-0	SCR, SET, CUP POINT M6 X 6.0				63
-	-	-	-	-	-						62
-	2	2	2	2	2	2-18032-5	SCR, SET, FLT POINT M5 X 20.0				61
-	1	1	1	1	1	18024-7	SCR, BTN SKT HD CAP (M4 X 10.0)				60
-	1	1	1	1	1	5-18022-2	SCR, HEX HD CAP M4 X 8.0				59
-	-	-	-	-	-						58
-	-	-	-	-	-						57
-	1	1	1	1	1	1338685-1	PAWL, FEED				56
-	-	-	-	-	-						55
-	2	2	2	2	2	18024-8	SCR, BTN SKT HD CAP (M4 X 12.0)				54
-	-	-	-	-	-						53
-	-	-	-	-	-						52
-	-	-	-	-	-						51
-	-	-	-	-	-						50
-	1	1	1	1	1	18024-3	SCR, BTN SKT HD CAP (M3 X 10.0)				49
-	-	-	-	-	-	1338675-1	CAM, UNIVERSAL PRE FEED				48
-	-	-	-	-	-	1338676-1	CAM, UNIVERSAL POST-FEED				47
-	1	1	1	1	1	1320999-3	APPLICATOR SUBASSEMBLY, HDI				46
-	1	1	1	1	1	690191-1	PLUG, NYLON				45
-	1	1	1	1	1	1338660-1	RAM				44
-	-	-	-	-	-						43
-	-	-	-	-	-						42
-	1	1	1	1	1	2-18024-6	SCR, BTN SKT HD CAP (M8 X 25.0)				41
-	-	-	-	-	-						40
-	1	1	1	1	1	690125-1	SHIM SUB-ASSY				39
-	1	1	1	1	1	1-469367-4	SHIM				38
-	1	1	1	1	1	879103-3	FINE ADJUST HEAD ASSEMBLY				37
-	-	-	-	-	-						36
-	-	-	-	-	-						35
-	-	-	-	-	-						34
-	2	2	2	2	2	1-18024-0	SCR, BTN SKT HD CAP (M4 X 20.0)				33
-	1	1	1	1	1	18027-2	WASHER, FLAT, REG M4				32
-	1	1	1	1	1	1-18023-2	SCR, SKT HD CAP M4 X 12.0				31
-	1	1	1	1	1	1320908-9	SPACER, STRIP GUIDE				30
-	1	1	1	1	1	1633073-1	STRIP GUIDE ASSEMBLY				29
-	1	1	1	1	1	1-455888-0	SPACER, CRIMPER				28
-	2	2	2	2	2	1-22284-0	SPRING, COMPRESSION				27
-	1	1	1	1	1	356835-1	LEVER, DRAG RELEASE				26
-	1	1	1	1	1	240792-1	DRAG, TERMINAL				25
-	1	1	1	1	1	1320928-1	PLATE, STRIP GUIDE				24
-	1	1	1	1	1	980371-4	SCR, SKT HD SHLDR 5.0 DIA X 6.0				23
-	1	1	1	1	1	690472-2	STRIPPER				22
-	1	1	1	1	1	1-18023-1	SCR, SKT HD CAP M4 X 10.0				21
-	2	2	2	2	2	18025-2	WASHER, SPRG LOCK, REG M4				20
-	1	1	1	1	1	690472-1	STRIPPER				19
-	-	-	-	-	-						18
△	1	1	1	1	1	1338684-1	SHEAR HOLDER, FRONT				17
-	-	-	-	-	-						16
-	-	-	-	-	-						15
-	-	-	-	-	-						14
-	-	-	-	-	-						13
-	1	1	1	1	1	3-22280-3	SPRING, COMPRESSION				12
-	1	1	1	1	1	356885-4	STOP, SHEAR				11
△	-	-	-	-	-	1320921-1	SHEAR HOLDER, FRONT, CUT				10
△	1	1	1	1	1	462006-1	FLOATING SHEAR, FRONT				9
△	1	2	2	2	1	1	9-1633138-5	ANVIL, COMBINATION			8
-	-	-	-	-	-						7
-	-	-	-	-	-						6
-	1	1	1	1	1	2-455889-0	DEPRESSOR, SHEAR				5
-	1	1	1	1	1	238011-6	BLOCK, CRIMPER SPACER				4
△	1	2	2	2	1	1	4-683453-8	CRIMPER, INSULATION PREMIUM			3
-	1	1	1	1	1	455888-3	SPACER, CRIMPER				2
△	1	2	2	2	1	1	3-1633588-0	CRIMPER, WIRE			1

QTY	REV	DATE	BY	CHK	APPV	DESCRIPTION	DATE	BY	CHK	APPV	
-	-	-	-	-	-						84
-	-	-	-	-	-						83
-	-	-	-	-	-						80
-	1	1	1	1	1	1-455888-0	SPACER, CRIMPER				81
-	-	-	-	-	-						80
-	-	-	-	-	-						79
-	-	-	-	-	-						78
-	-	-	-	-	-						77
-	-	-	-	-	-						76
-	-	-	-	-	-						75
-	-	-	-	-	-						74

77-76-72-71-6-2-1 PART NO DESCRIPTION ITEM NO

DIMENSIONS: mm [IN]	TOLERANCES UNLESS OTHERWISE SPECIFIED:	DRAWN: M. BETISS 24 JUNE 2008	CHK: M. BETISS
0 PLC ±	1 PLC ±	APPROVED: M. CLIFFORD 24 JUNE 2008	NAME: M. CLIFFORD
2 PLC ±	3 PLC ±	PRODUCT SPEC: -	APPLICATION SPEC: See Table
4 PLC ±	ANGLES ±	WEIGHT: -	CUSTOMER DRAWING: -
MATERIAL: -	FINISH: -	SCALE: 3:5	SHEET 1 OF 1

Tyco Electronics Tyco Electronics Harrisburg, PA 17105-3608

FINE ADJUST SIDE FEED HDI APPLICATOR

SIZE: A1 CAGE CODE: 00779 DRAWING NO: 1528914 RESTRICTED TO REV A