

## Type 3 surge protection base element - PLT-SEC-T3-3S-BE - 2905592

Please be informed that the data shown in this PDF Document is generated from our Online Catalog. Please find the complete data in the user's documentation. Our General Terms of Use for Downloads are valid (<http://phoenixcontact.com/download>)



Base element for protective plugs from the PLUGTRAB SEC product series with remote indication contact.

RoHS

### Key Commercial Data

Packing unit	1 STK
Custom tariff number	85363090
Country of origin	Germany

### Technical data

#### Dimensions

Height	90 mm
Width	35.4 mm
Depth	51.2 mm
Horizontal pitch	2 Div.

#### Ambient conditions

Degree of protection	IP20
Ambient temperature (operation)	-40 °C ... 80 °C
Ambient temperature (storage/transport)	-40 °C ... 80 °C
Altitude	≤ 2000 m (amsl (above mean sea level))
Permissible humidity (operation)	5 % ... 95 %
Shock (operation)	30g (half sinus / 11 ms / 3x ±X, ±Y, ±Z)
Vibration (operation)	5g (10 ... 150 Hz/20 cycles/axis/X, Y, Z)

#### General

IEC test classification	III
	T3

# Type 3 surge protection base element - PLT-SEC-T3-3S-BE - 2905592

## Technical data

### General

EN type	T3
Number of ports	One
Mounting type	DIN rail: 35 mm
Color	traffic grey A RAL 7042
Housing material	PA 6.6-FR
Degree of pollution	2
Flammability rating according to UL 94	V-0
Number of positions	2
Surge protection fault message	Remote indication contact

### Protective circuit

Nominal voltage $U_N$	230/400 V AC (TN-S)
	230/400 V AC (TT)
Nominal frequency $f_N$	50 Hz (60 Hz)
Maximum continuous voltage $U_C$	264 V AC
Rated load current $I_L$	26 A (30 °C)
Short-circuit current rating $I_{SCCR}$	1.5 kA AC
Max. backup fuse with branch wiring	Not required
Maximum backup fuse for through wiring	25 A (gG / B / C)

### Indicator/remote signaling

Connection name	Remote fault indicator contact
Switching function	N/C contact
Connection method	Screw connection
Conductor cross section flexible	0.2 mm <sup>2</sup> ... 2.5 mm <sup>2</sup>
Conductor cross section solid	0.2 mm <sup>2</sup> ... 4 mm <sup>2</sup>
Conductor cross section AWG	24 ... 12
Screw thread	M3
Tightening torque	0.8 Nm
Stripping length	8 mm

### Connection data

Connection method	Screw connection
Conductor cross section flexible	0.2 mm <sup>2</sup> ... 2.5 mm <sup>2</sup>
Conductor cross section solid	0.2 mm <sup>2</sup> ... 4 mm <sup>2</sup>
Conductor cross section AWG	24 ... 12
Screw thread	M3
Tightening torque	0.8 Nm
Stripping length	8 mm

# Type 3 surge protection base element - PLT-SEC-T3-3S-BE - 2905592

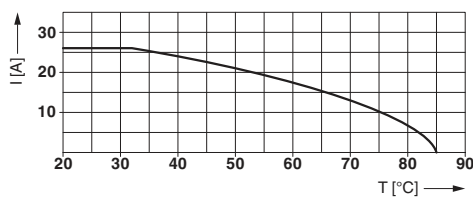
## Technical data

### Standards and Regulations

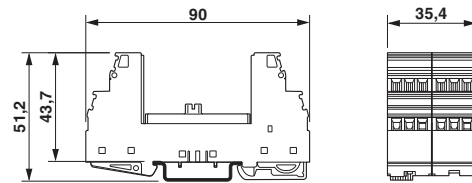
Standards/specifications	IEC 61643-11 2011
	EN 61643-11 2012

## Drawings

Diagram

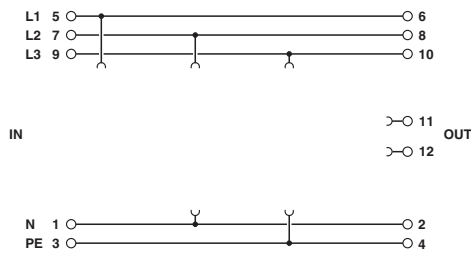


Dimensional drawing



Nominal current depending on ambient temperature

Circuit diagram



## Classifications

### eCl@ss

eCl@ss 5.1	27130801
eCl@ss 6.0	27130806
eCl@ss 8.0	27130803
eCl@ss 9.0	27130803

### ETIM

ETIM 5.0	EC000472
----------	----------

## Approvals

### Approvals

## Type 3 surge protection base element - PLT-SEC-T3-3S-BE - 2905592

### Approvals

Approvals

EAC

---

Ex Approvals

---

### Approval details

EAC RU C-DE.A\*30.B01561

### Accessories

Accessories

Device marking

Label - EML (20XE)R - 0803452



Label, Roll, white, unlabeled, can be labeled with: THERMOMARK ROLL, THERMOMARK ROLL X1, THERMOMARK X, THERMOMARK S1.1, Mounting type: Adhesive, Lettering field: continuous x 20 mm

---

Label - EML (20XE)R YE - 0803453



Label, Roll, yellow, unlabeled, can be labeled with: THERMOMARK ROLL, THERMOMARK ROLL X1, THERMOMARK X, THERMOMARK S1.1, Mounting type: Adhesive, Lettering field: continuous x 20 mm

---

End block

End clamp - CLIPFIX 35 - 3022218



Quick mounting end clamp for NS 35/7,5 DIN rail or NS 35/15 DIN rail, with marking option, width: 9.5 mm, color: gray

---

Marker pen

## Type 3 surge protection base element - PLT-SEC-T3-3S-BE - 2905592

### Accessories

Marker pen - X-PEN 0,35 - 0811228



Marker pen without ink cartridge, for manual labeling of markers, labeling extremely wipe-proof, line thickness 0.35 mm

---

### Additional products

Type 3 surge protection plug - PLT-SEC-T3-3S-230-P - 2905236



Replacement plug for type 3 device protection from the PLUGTRAB SEC T3 3S product range. 230 V nominal voltage.