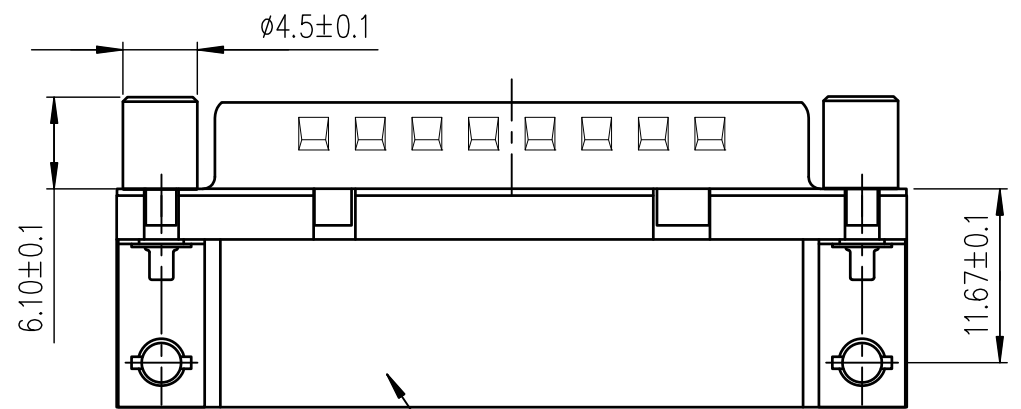


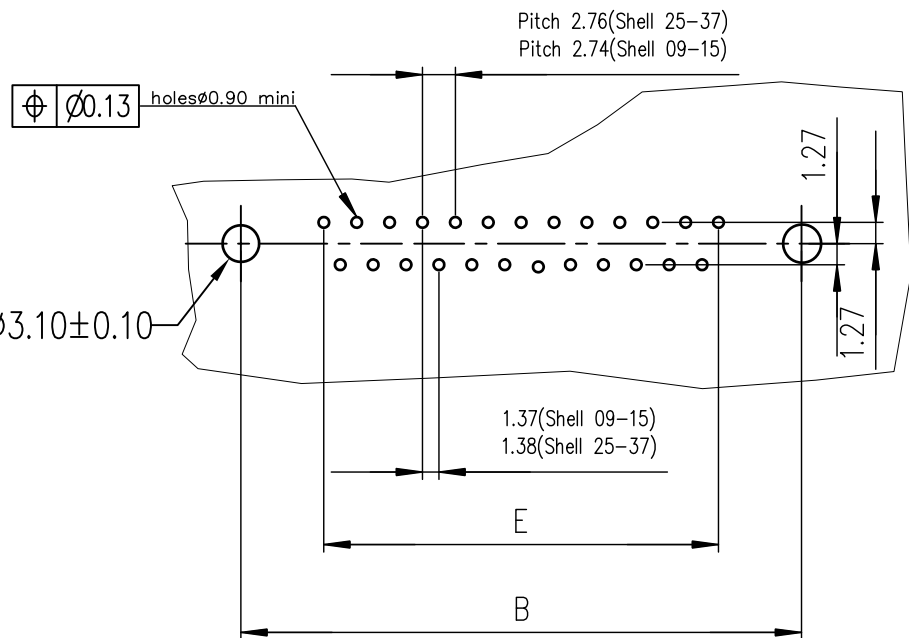
SHELL	A±0.38	B±0.12	C±0.10	D±0.25	E±0.07	G±0.25
09	30.81	24.99	16.96	16.79	10.96	5.90
15	39.14	33.32	25.18	25.12	19.18	5.90
25	53.03	47.04	39.12	38.84	33.12	5.70
37	69.32	63.50	55.68	55.30	49.68	5.70

GENERAL CHARACTERISTICS : SEE DWG.NO: C01-8646-0000



Part Number & Date Code Printing

PC card drilling dimensions(after plating)
(thickness 1.60±0.20mm)



4 = Performance level PL3 ≥ 200 OPERATIONS
6 = Performance level PL1 ≥ 500 OPERATIONS

LF FOR LEAD FREE

SHELL	PART NUMBER	DESIGNATIONS
09	D09P13A*G*00**	HEADER 9 CTS RIGHT ANGLED-SOLDER TO BOARD-PCB HARPOON-SCREWLOCK -ELEC.CONTIN.
15	D15P13A*G*00**	HEADER 15 CTS RIGHT ANGLED-SOLDER TO BOARD-PCB HARPOON-SCREWLOCK -ELEC.CONTIN.
25	D25P13A*G*00**	HEADER 25 CTS RIGHT ANGLED-SOLDER TO BOARD-PCB HARPOON-SCREWLOCK -ELEC.CONTIN.
37	D37P13A*G*00**	HEADER 37 CTS RIGHT ANGLED-SOLDER TO BOARD-PCB HARPOON-SCREWLOCK -ELEC.CONTIN.

I = SCREWLOCK Threaded M3
V = SCREWLOCK Threaded UNC 4.40 sellers

mat'l. code				surface		tolerance		projection		product family		
SEE NOTES				ISO 1302	ISO 406	ISO 1101	MM		DELTA-D			
ltr	ecn no	dr	date	tolerances unless otherwise specified				title				
D	I05-0124	JS	2005/07/27	angles	linear	0.X± 0.1		MALE DELTA-D RIGHT ANGLED				
E	I06-0074	SK	2006/06/08			0.XX± 0.1		WITH SCREW LOCK, HARPOON & METAL BRACKET				
F	I09-0023	AS	2009/02/11	X±1°			0.XXX± 0.1		scale 1:1			
G	ELXI-I-15060	AB	2013/06/25	dr	GEORGE.V.J	2006/10/17	FCJ		dwg no		sheet 1 of 1	size 5
-	-	-	-	engr	ALIAS.BABU	2013/06/25			C01-8646-0742		A3	
-	-	-	-	chr	MITHUN.PAUL	2013/06/25			type		CUSTOMER Drawing	
-	-	-	-	appd	BIJU.K.PAUL	2013/06/25						
sheet index	revision sheet	G	1	-	-	-	-	-	-	-	-	-