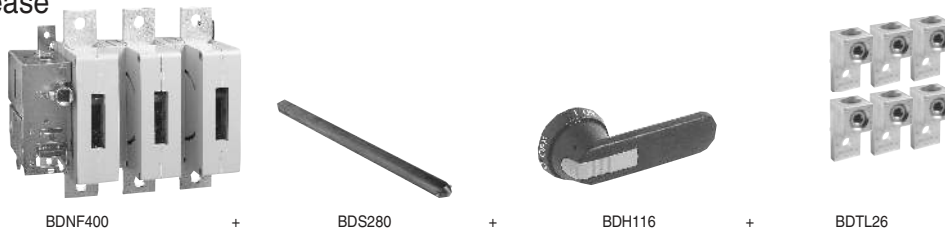


Non-Fusible Disconnect Switches

For a complete assembly, please select one of each:

- 1 switch
- 1 handle
- 1 shaft
- 1 terminal lug kit



Fusible

Non-Fusible

Enclosed Fused

Enclosed Non-Fused



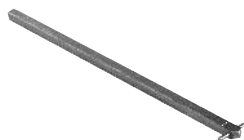
BDNF600A



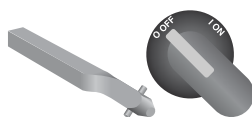
BDNF800A



BDH112-117



BDS280



BDS_45

400 – 800 Amp switches, 600V

| UL general purpose amp rating | IEC AC21 amp rating | Maximum horsepower rating | | | | | Catalog number |
|-------------------------------|---------------------|---------------------------|------|------|------|------|------------------------------------|
| | | 200V | 208V | 240V | 480V | 600V | |
| 2 pole | | | | | | | |
| 400 | 630 | — | — | — | — | — | BDNF4002 BDNF600A2 BDNF800A2 |
| 600 | 800 | — | — | — | — | — | |
| 800 | 1250 | — | — | — | — | — | |
| 3 pole | | | | | | | |
| 400 | 630 | 100 | 100 | 125 | 250 | 350 | BDNF400 BDNF600A BDNF800A |
| 600 | 800 | 150 | 150 | 200 | 400 | 500 | |
| 800 | 1250 | 200 | 200 | 250 | 500 | 600 | |
| 4 pole | | | | | | | |
| 400 | 630 | 100 | 100 | 125 | 250 | 350 | BDNF4004 BDNF600A4 BDNF800A4 |
| 600 | 800 | 150 | 150 | 200 | 400 | 500 | |
| — | 1250 | 200 | 200 | 250 | 500 | 600 | |

Pistol handles — for use with shafts ■ .47 x .47" (■ 12 x 12 mm)

| NEMA type | IEC type | Color | Length in/mm | Marking | Defeatable | Padlockable | Weight (lbs) | Catalog number |
|--------------|----------|-------|--------------|--------------|------------|-------------|--------------|----------------|
| 1,3R,12 | IP65 | Blk | 4.9/125 | O/I & Off/On | Yes | Yes | 0.39 | BDH112 |
| 1,3R,12 | IP65 | R/Y | 4.9/125 | O/I & Off/On | Yes | Yes | 0.39 | BDH113 |
| 1,3R,12 | IP65 | Blk | 5.7/145 | O/I & Off/On | Yes | Yes | 0.39 | BDH114 |
| 1,3R,12 | IP65 | R/Y | 5.7/145 | O/I & Off/On | Yes | Yes | 0.39 | BDH115 |
| 1,3R,12 | IP65 | Blk | 6.9/175 | O/I & Off/On | Yes | Yes | 0.41 | BDH116 |
| 1,3R,12 | IP65 | R/Y | 6.9/175 | O/I & Off/On | Yes | Yes | 0.41 | BDH117 |
| 1,3R,4,4X,12 | IP66 | Blk | 5.7/145 | O/I & Off/On | Yes | Yes | 0.39 | CDHXB12 |
| 1,3R,4,4X,12 | IP66 | R/Y | 5.7/145 | O/I & Off/On | Yes | Yes | 0.39 | CDHXY12 |
| 1,3R,4,4X,12 | IP66 | Blk | 6.9/175 | O/I & Off/On | Yes | Yes | 0.41 | CDHXB22 |
| 1,3R,4,4X,12 | IP66 | R/Y | 6.9/175 | O/I & Off/On | Yes | Yes | 0.41 | CDHXY22 |
| 1,3R,4,4X,12 | IP65 | Metal | 8.7/220 | Off/On | — | Yes | 1.50 | BDH8 |

Shafts — for use with pistol handles ■ .47 x .47" (■ 12 x 12 mm)

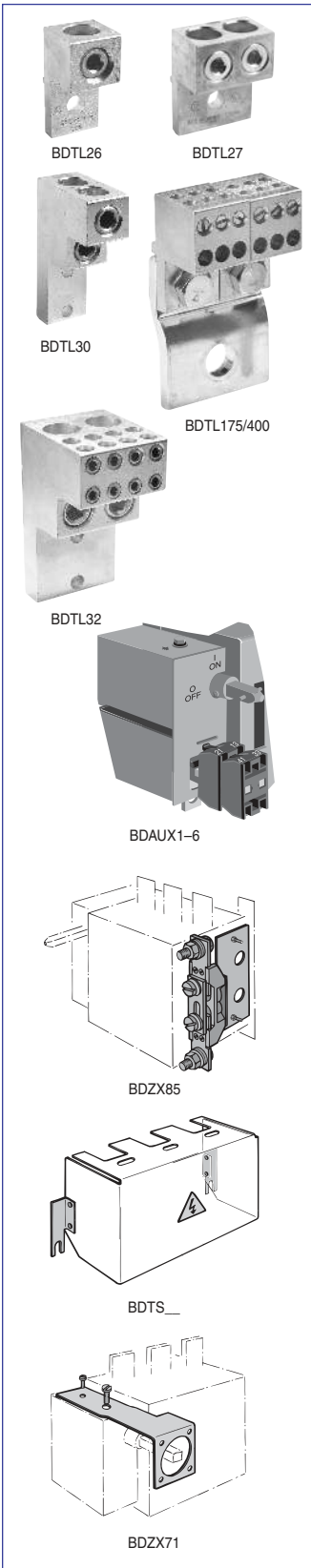
| Shaft length inches/mm | Mounting depth ^① in inches | Weight (lbs) | Catalog number |
|------------------------|---------------------------------------|--------------|----------------|
| 11.0/280 | 10.2 – 14.5 | 0.77 | BDS280 |
| 12.8/325 | 12.0 – 16.3 | 0.90 | BDS325 |
| 15.6/395 | 14.8 – 19.1 | 1.10 | BDS395 |
| 18.3/465 | 17.5 – 21.9 | 1.32 | BDS465 |
| 21.1/535 | 20.3 – 24.6 | 1.54 | BDS535 |

Twisted shafts — Rotates handle 45° ■ .47 x .47" (■ 12 x 12 mm)

| Shaft length inches/mm | Mounting depth ^① in inches | Weight (lbs) | Catalog number |
|------------------------|---------------------------------------|--------------|----------------|
| 11.0/280 | 10.2 – 14.5 | 0.77 | BDS28045 |
| 12.8/325 | 12.0 – 16.3 | 0.90 | BDS32545 |
| 18.3/465 | 17.5 – 21.9 | 1.32 | BDS46545 |

① Mounting depth is the distance from the outside of the door to the disconnect switch mounting plate. Shaft can be cut to desired length.

for 400A – 800A Non-Fusible Disconnect Switches



Terminal lug kits

| For use on: | Wire size | Kit weight (lbs.) | Wire type | Terminal lugs per kit | Kit catalog number |
|---------------------------------|---------------------------|-------------------|-----------|-----------------------|--------------------|
| BDNF400 | #2 – 600 kcmil | 3.50 | Cu/Al | 6 | BDTL26 |
| BDNF400 | (2) #2 – 500 kcmil | 4.62 | Cu/Al | 6 | BDTL262 |
| BDNF600A | (2) #2 – 600 kcmil | 4.62 | Cu/Al | 6 | BDTL27 |
| BDNF800A | (2) #2 – 600 kcmil | 6.90 | Cu/Al | 6 | BDTL30 |
| BDNF800A ^① | (8) 2/0 + (2)#2 600 kcmil | 6.90 | Cu/Al | 3 | BDTL32 |
| BDNF400 – BDNF600A ^① | (12) #14 – 6 | 1.10 | Cu/Al | 6 | BDTL175/400 |

Auxiliary contacts^②

| Description | For use on: | Weight (lbs) | AC thermal amp rating | AC rated voltage | Catalog number |
|-----------------|-----------------------|--------------|-----------------------|------------------|----------------|
| 1 N.O. + 1 N.C. | BDNF400 – BDNF800A | 0.20 | 10 | 600 | BDAUX1 |
| 2 N.O. + 2 N.C. | | 0.26 | 10 | 600 | BDAUX2 |
| 4 N.O. + 4 N.C. | | 0.40 | 10 | 600 | BDAUX3 |
| 2 N.O. | | 0.18 | 10 | 600 | BDAUX4 |
| 4 N.O. | | 0.25 | 10 | 600 | BDAUX5 |
| 8 N.O. | | 0.40 | 10 | 600 | BDAUX6 |

Terminal poles

| Description | For use on: | Weight (lbs) | AC thermal amp rating | AC rated voltage | Catalog number |
|---|-----------------------|--------------|-----------------------|------------------|----------------|
| Detachable neutral mounts on side of switch or DIN rail | BDNF400 – BDNF600A | 1.04 | 400 | 600 | BDZX85 |

Terminal shrouds

| Description | For use on: | Weight (lbs) | Catalog number |
|---|-------------|--------------|----------------|
| Includes one shroud for line or load side | BDNF400 | 0.62 | BDTS4 |
| | BDNF600A | 0.66 | BDTS6A |
| | BDNF800A | 0.88 | BDTS8A |

Handle support bracket

| Description | For use on: | Weight (lbs) | Catalog number |
|--|-----------------------|--------------|----------------|
| Allows handle to be directly mounted to switch behind the door | BDNF400 – BDNF600A | 0.51 | BDZX73 |
| | BDNF800A | 0.88 | BDZX71 |

① A load side distribution lug eliminates the need to purchase, install and wire a separate distribution block.

② UL File E57057

Fusible

Non-Fused

Enclosed Fused

Enclosed Non-Fused

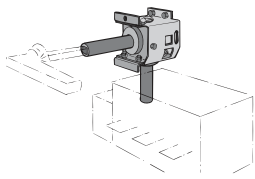
for 400A – 800A Non-Fusible Disconnect Switches

Fusible

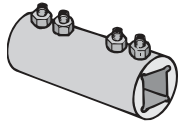
Non-Fused

Enclosed Fused

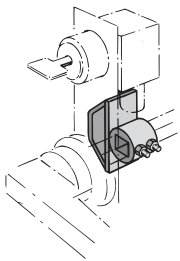
Enclosed Non-Fused



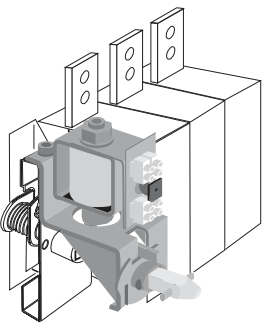
BDZX108



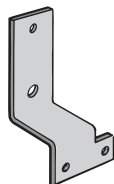
BDZW95



CDETL-ZW5



CDETL-ZT80_



CDETL-ZT100

90° angle kit

| Description | For use on: | Weight (lbs) | Catalog number |
|--|---------------------------------|--------------|----------------|
| Converts switch mechanism from front operation to side operation | BDNF400 BDNF600A BDNF800A | 4.63 | BDZX108 |

Shaft extension coupler

| Description | For use on: | Weight (lbs) | Catalog number |
|--|-------------|--------------|----------------|
| Joins two shafts together for applications where extended length is required | 12mm shafts | 0.26 | BDZW95 |

Locking accessories

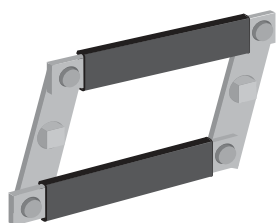
| Description | For use on: | Weight (lbs) | Catalog number |
|---|---------------------------------|--------------|--------------------------------|
| Cam attachment for Kirk Key, Castell, Lowe & Fletcher and Ronis interlock. For adapting to the interlock system. The interlock is not included. | 12mm shafts | 0.29 | CDETL-ZW5 |
| Electrical interlock ① Closed circuit principle for interlocking the switch movement. When the coil circuit is dead, A-types cannot be operated to ON-position and L-types cannot be operated to ON- or OFF-position. Coil voltages 110VAC, 220VAC, 24VDC, 48VDC, 60 VDC, 110VDC, 220VDC, P = 15W U = 0.7 – 1.1 Un (U = coil voltage, Un = nominal voltage) | BDNF400 BDNF600A BDNF800A | 2.42 | CDETL-ZT80A/★ CDETL-ZT80L/★ |
| Mounting bracket | BDNF400 BDNF600A | 0.40 | CDETL-ZT100 |

★ – Coil voltage

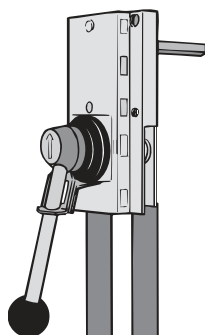


① CDETL-ZT100 mounting bracket required for BDNF400 & BDNF600A

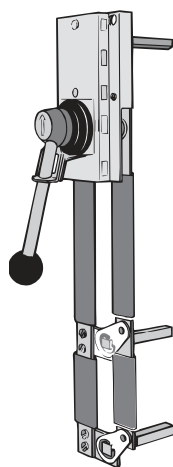
for 400A – 800A Non-Fusible Disconnect Switches



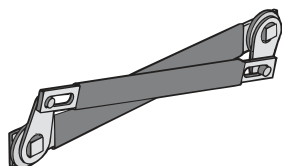
BDZW9



BDZW12



BDZW13



BDZW3, 14, 15

Conversion mechanisms

- Switches are not included

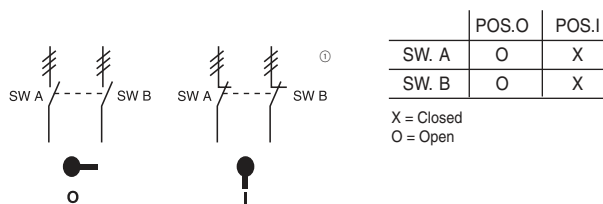
| Description | For use on: | Weight (lbs) | Catalog number |
|-----------------------------|---------------------------------|--------------|----------------|
| 6 or 8 pole Transfer Bypass | BDNF400 BDNF600A BDNF800A | 2.42 | BDZW9 |
| | | 10.1 | BDZW12 |
| | | 8.81 | BDZW13 |
| Mechanical interlock | BDNF400 BDNF600A BDNF800A | 1.26 | BDZW3 |
| | | 1.15 | BDZW14 |
| | | 2.64 | BDZW15 |

6 or 8 pole — BDZW9

6 (8) pole mechanism allows two switches controlled by one handle to open or close simultaneously. One shaft included.

Equipment required for a complete installation:

- One conversion mechanism
- Two disconnect switches
- One handle
- One additional shaft (Only one shaft is included with mechanism).



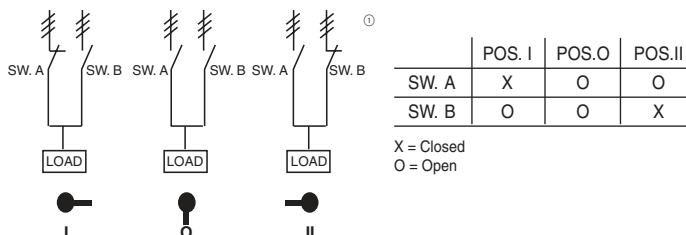
Transfer — BDZW12

Transfer mechanism manually transfers between two power sources using two switches and a center OFF position. A 3 position handle is included.

Shafts included.

Equipment required for a complete installation:

- One conversion mechanism
- Two disconnect switches

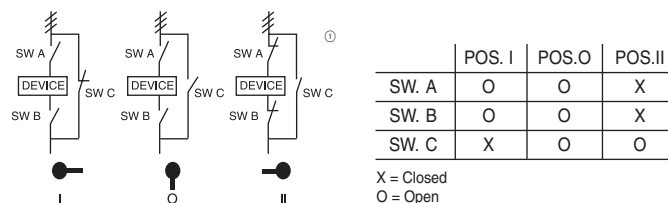


Bypass — BDZW13

Bypass mechanism operates three switches: Two switches in series and one changeover switch to allow power bypass. A 3 position handle is included. (UL Type 1, 3R, 4, 4X, 12). Shafts included.

Equipment required for a complete installation:

- One conversion mechanism
- Three disconnect switches

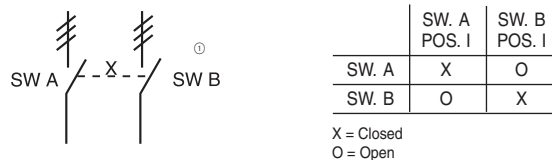


Mechanical interlock — BDZW3, BDZW14, BDZW15

Mechanical interlock mechanism prevents both switches from being in the ON position at the same time.

Equipment required for a complete installation:

- One conversion mechanism
- Two disconnect switches
- Two shafts
- Two handles



⊙ = Three poles

Fusible

Non-Fused

Enclosed Fused

Enclosed Non-Fused