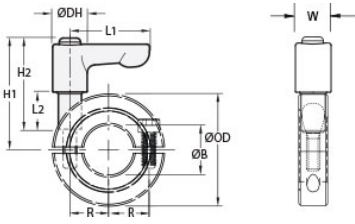




LV-MSP-12E-P

Ruland LV-MSP-12E-P, 3/4" Two-Piece Shaft Collar with Clamping Lever,
Plastic Collar with Zinc Plated Lever, 40mm OD, 15mm Width



Description

Ruland LV-MSP-12E-P is a two-piece quick clamping shaft collar with clamping lever with a 0.7500" bore, 40mm OD, and 15mm width. It is made from MSP-12E-P and LF45-CL-M6:18-ZS. LF45-CL-M6:18-ZS is an international series shaft collar that has an inch bore, metric hardware, and metric dimensions. The clamp style design does not mar the shaft, is easy to remove, and is indefinitely adjustable. The threaded stud on the lever is used in place of standard collar hardware. Two-piece shaft collars can be assembled in-lace without the need to remove other components. Ruland mates halves throughout the manufacturing process for proper fit, alignment, and holding power. When combined, the two parts create a shaft collar that requires no tools to install, remove, or reposition and is ideally suited for packaging, printing, and other applications where frequent setup changes and adjustments are needed. Once the lever is installed in the shaft collar, users simply turn the lever until they meet their desired torque. The adjustable lever can be reposition by the user without the loss of holding power by lifting the handle and twisting it 40° to lock it in a new position. This allows for use in space constrained environments where 360° rotation is not possible to fully seat the lever. MSP-12E-P is made from acetal plastic. LF45-CL-M6:18-ZS has a zinc plated steel handle and stainless steel threaded stud. This material combination allows for a lightweight quick clamping and release component with high corrosion resistance that is suitable for light duty industrial applications. The lever is black to seamlessly integrate with the aesthetics of most equipment. MSP-12E-P is manufactured by Ruland and LF45-CL-M6:18-ZS is manufactured by Otto Ganter. LV-MSP-12E-P is RoHS3 and REACH compliant.

Product Specifications

| | | | |
|----------------------------------|--|------------------------------------|---------------------------|
| Bore (B) | 0.7500 in | Bore Tolerance | +0.0020 in / +0.0005 in |
| Outer Diameter (OD) | 40 mm | Center to Lever Top H1 | 38.8 mm |
| Width (W) | 15 mm | Width Tolerance | +0.076 mm / -0.254 mm |
| Lever Length L1 | 45 mm | Lever Height H2 | 38.5 mm |
| Hub Diameter DH | 13 mm | Sleeve Length L2 | 18 mm |
| Recommended Gap | 1.59 mm | Recommended Shaft Tolerance | +0.0000 in / -0.0005 in |
| Thread TH | M6 | Hex Wrench Size | 5.0 mm |
| Seating Torque | 2.8 Nm | Screw Location (R) | 14.73 mm |
| Number of Screws | 2 ea | Collar Part Number | MSP-12E-P |
| Lever Part Number | LF45-CL-M6:18-ZS | Collar Material | Plastic |
| Collar Finish | Plain | Handle Color | Black |
| Handle Material | Zinc | Handle Finish | Powder Coated |
| Insert and Screw Material | 303 Stainless Steel | Manufacturer | Ruland Manufacturing |
| Country of Origin | Shaft Collar - USA Lever - Germany | Weight (lbs) | 0.141400 |
| UPC | 634529248911 | Tariff Code | 8483.60.8000 |
| UNSPC | 31162811 | | |
| Note 1 | Performance ratings are for guidance only. The user must determine suitability for a particular application. | | |
| Prop 65 | <p>⚠️WARNING This product can expose you to chemicals including Soots, Benzene, Lead, Nickel (metallic) and Formaldehyde, known to the State of California to cause cancer, and Lead and Benzene known to the State of California to cause birth defects or other reproductive harm. For more information go to www.P65Warnings.ca.gov.</p> | | |