

# SAM Series Multiway Switches

**NEW**

## Features/Benefits

- Multi-directional switches  
2-way & 4-way
- Actuation force 5.3N or 6N
- Footprint 20.7x18.0 mm (2-way) & 26.2x26.2 mm (4-way)
- Momentary action - SPDT

## Typical Applications

- Automotive
- Industrial
- Avionics
- Joystick switch



## Specifications

FUNCTION: Momentary action.  
CONTACT ARRANGEMENT: SPDT per switching circuit  
SWITCHING MODE: Non-Shorting  
TERMINALS: THT - Through Hole Terminals

## Mechanical

P/N	Force (N)	Operating Life (Cycles*)	Travel (mm)
SAM-H2-LR10SPA	6.0±2.0	30,000	1.00±0.4
SAM-H2-LR14SPA	5.3±2.0	30,000	1.25±0.4
SAM-H2-MR14SPA	5.3±2.0	30,000	1.25±0.4
SAM-H4-MR11SPA	6.0±2.0	30,000	1.00±0.4

Notes: \* per direction

## Electrical

RATING: 15A @ 14V DC  
INITIAL CONTACT RESISTANCE: <20mΩ per switching circuit  
DIELECTRIC WITHSTANDING VOLTAGE: 500VAC  
INSULATION RESISTANCE: >100MΩ  
BOUNCE TIME: <10ms

## Environmental

OPERATING TEMPERATURE: -40°C to +85°C  
STORAGE TEMPERATURE: -40°C to +85°C  
SEALING LEVEL: IP30

## Process

SOLDERING: Wave compatible  
TERMINALS: Silver plated

## Materials

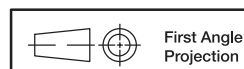
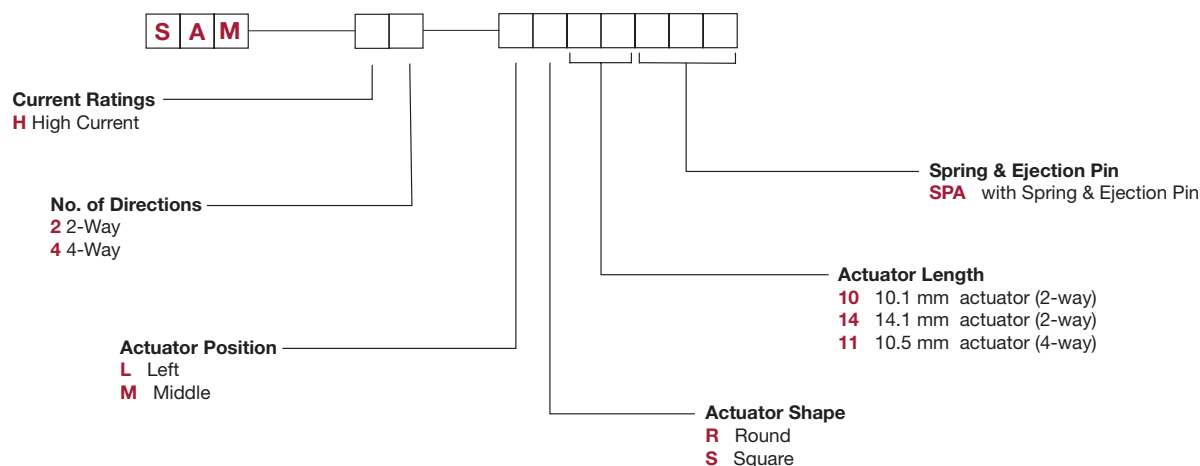
HOUSING: Polyamide UL94 HB  
COVER: PBT+ASA UL94 HB  
ACTUATOR: Polyamide UL94 HB  
TERMINAL: Copper alloy, silver plated  
CONTACT: Silver alloy

## Packaging

720 pieces per box for SAM-H2-LR10SPA & SAM-H2-LR14SPA  
540 pieces per box for SAM-H2-MR14SPA  
264 pieces per box for SAM-H4-MR11SPA

## How To Order

The Build-A Switch concept allows you to mix and match options to create the switch you need. Below is a complete listing of options shown in catalog. To order, simply select desired option from each category and place in the appropriate box.

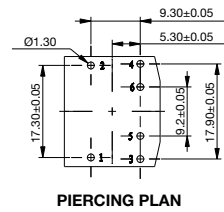
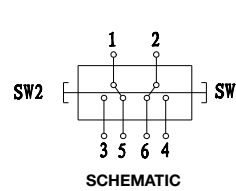
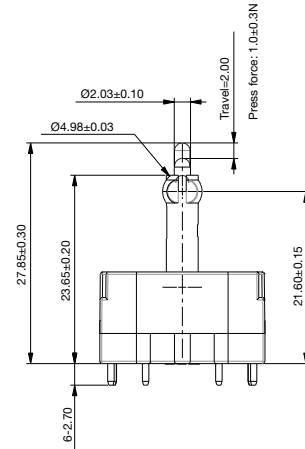
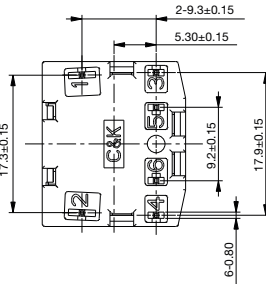
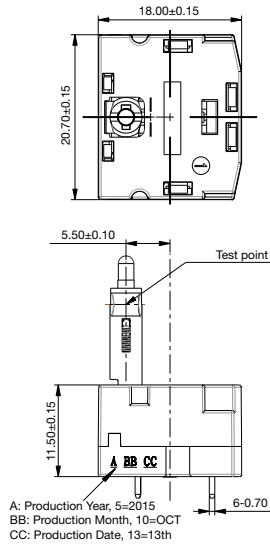


Dimensions are shown: mm  
Specifications and dimensions subject to change

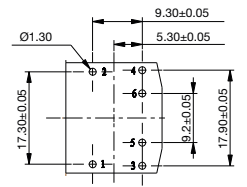
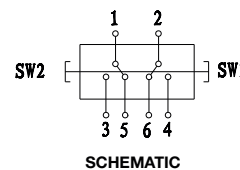
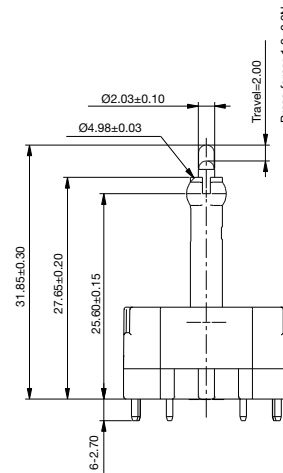
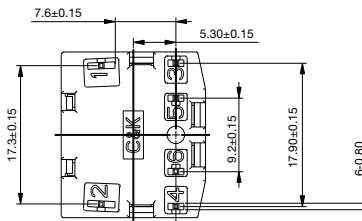
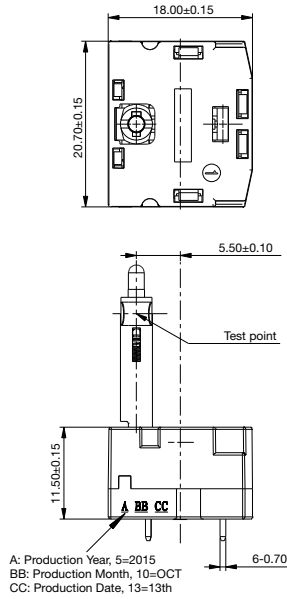
NEW

# SAM Series Multiway Switches

## SAM-H2-LR10SPA



## SAM-H2-LR14SPA

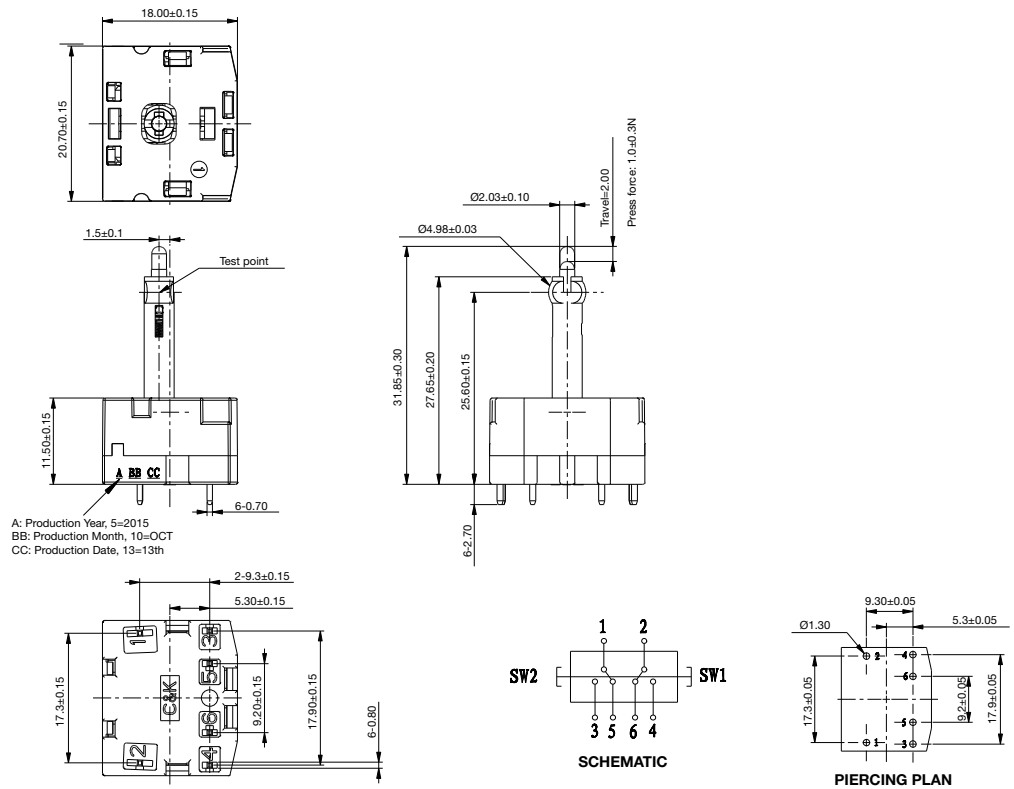


Navigation

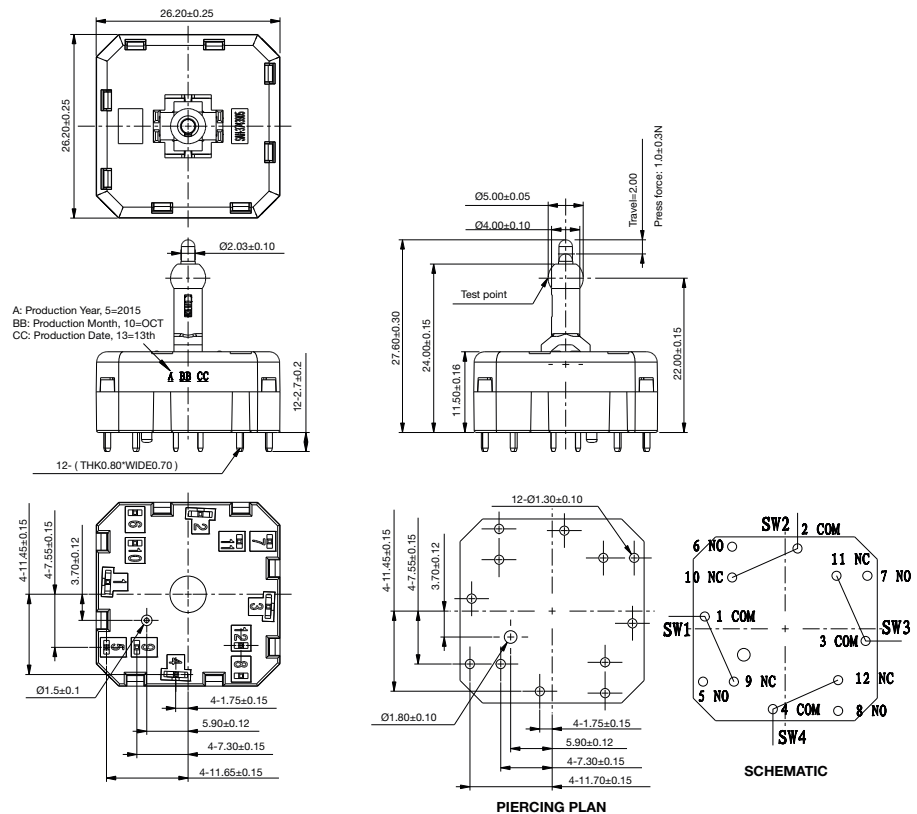
# SAM Series Multiway Switches

**NEW**

## SAM-H2-MR14SPA



## SAM-H4-MR11SPA



Dimensions are shown: mm  
 Specifications and dimensions subject to change

www.ckswitches.com