

# GN 224.1 - GN 224.5

# Finger handles

Steel or stainless steel

# RH-FM

# Thimble-shaped handles

Technopolymer

- 1
- 2
- 3
- 4
- 5
- 6
- 7
- 8
- 9
- 10
- 11
- 12
- 13
- 14
- 15
- 16
- 17
- 18



### MATERIAL

Round cross section bar.  
GN 224.1: chrome-plated steel.  
GN 224.5: AISI 304 stainless steel, brushed matte finish.

### WASHERS

GN 224.1: nickel-plated zinc alloy.  
GN 224.5: AISI 304 stainless steel.

### MATERIAL

Glass-fibre reinforced polyamide based (PA) technopolymer.

### COLOUR

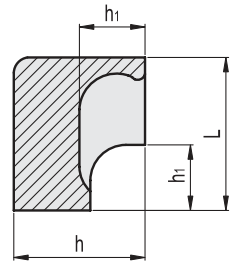
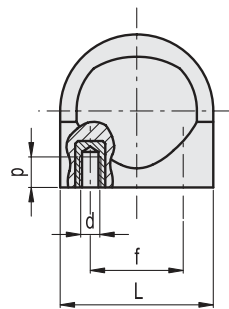
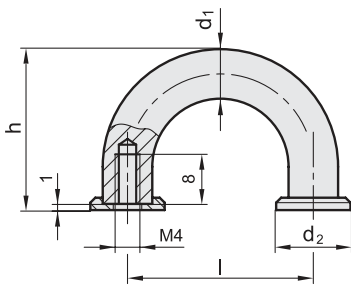
Black, semi-matte finish.

### STANDARD EXECUTION

Tapped brass boss.



Conversion Table			
1 mm = 0.039 inch			
d1		L	
mm	inch	mm	inch
8	0.31	26	1.02
10	0.39	30	1.18



### GN 224.1

METRIC

Code	Description	d1	l	d2	h	⚖️
GN.10381	GN 224.1-8-30-CR	8	30±0.25	12	26	20
GN.10382	GN 224.1-10-40-CR	10	40±0.25	15	31	40

### GN 224.5

INOX STAINLESS STEEL METRIC

Code	Description	d1	l	d2	h	⚖️
GN.10385	GN 224.5-8-30	8	30±0.25	12	26	20
GN.10386	GN 224.5-10-40	10	40±0.25	15	31	40

METRIC

Code	f	L	d	p	h	h1	⚖️
RHFM-14.022.9005	14	26	M4	6	22	11	15
RHFM-18.026.9005	18	30	M4	6	26	13	21

Lift & Pull handles