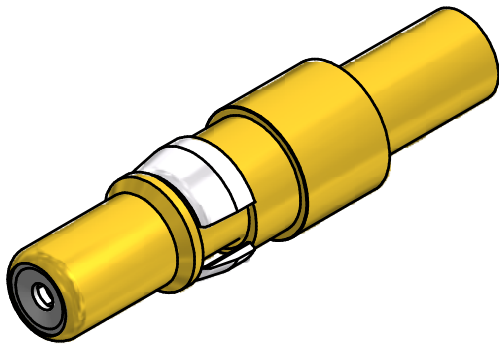
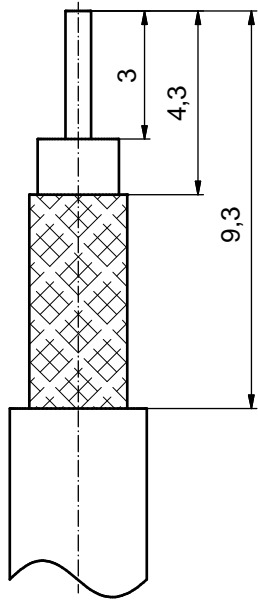


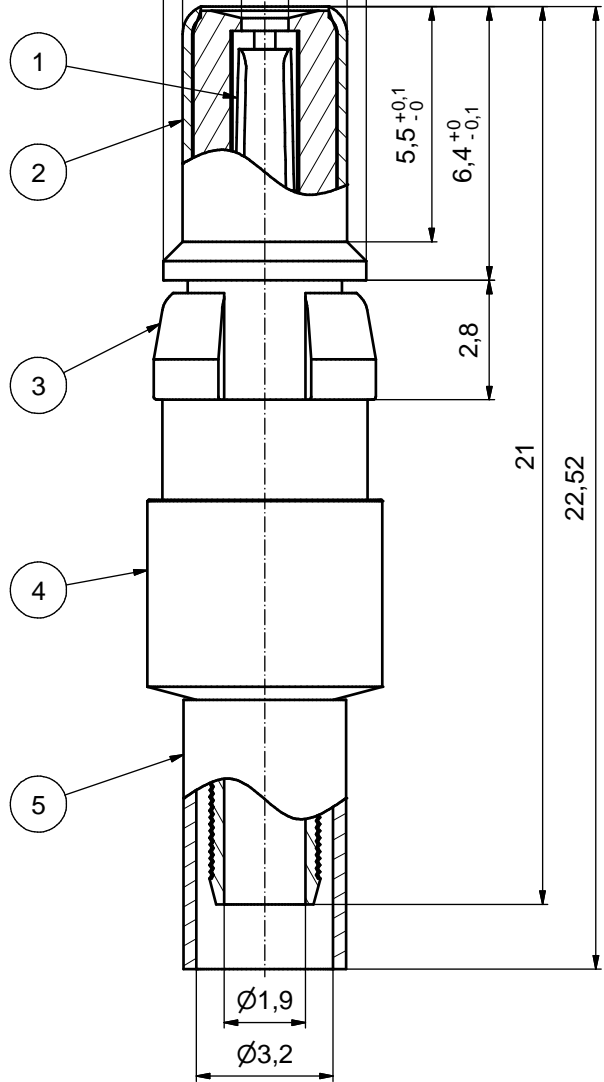
(b) STRIPPING DIMENSIONS



(c) $\varnothing 4,75^{+0}_{-0,03}$

(c) $\varnothing 1,1^{+0}_{-0,1}$

$\varnothing 3,85 \pm 0,02$



(c) ASSEMBLY TOOLING:

1. CENTER CONTACT:
USE CRIMP TOOL: 360X10329X
WITH TOOL INSERT: 360X11049X
SELECTOR SETTING: 3 (FOR AWG 30 CENTER CONDUCTOR OF CABLE)
2. CRIMP FERRULE:
USE CRIMP TOOL: 360X10519X
WITH TOOL INSERT: 360X11019X
INSERT CAVITY B: HEX 3.25/128

Part no.	Finish Pos.1	Finish Pos.2	Finish Pos.3	Finish Pos. 4/5
131J31019X	min. 50µin HARD GOLD over min. 50µin NICKEL	min. 30µin HARD GOLD over min. 50µin NICKEL	NICKEL PLATED	GOLD FLASH over NICKEL
131A31019X	GOLD FLASH over NICKEL	GOLD FLASH over NICKEL	NICKEL PLATED	GOLD FLASH over NICKEL

Directive 2002/95/EC RoHS compliant

THIS DRAWING MAY NOT BE COPIED OR REPRODUCED IN ANY WAY, AND MAY NOT BE PASSED ON TO A THIRD PARTY WITHOUT WRITTEN PERMISSION. OWNERSHIP AND COPYRIGHT OF CONEC GmbH DO NOT ALTER CAD DRAWING BY HAND	tolerance		dim. in mm		scale: 8:1	
					material: COPPER ALLOY (Pos.1 - 5) (c)	
	date		name		title:	
	drawn	01.10.01	Parei		COAXIAL CONTACT PLUG 75 OHM	
	appd.	01.10.01	Mickenbecker		inner + outer conductor for crimp termination for cable RG 179BU 187AU	
norm		d-old		dwg no: Inventor 10		
5 x c	Ä3774	07.01.11	HS	DIN-A3		
1 x b	Ä2215	26.04.05	HS	sh: 1		
a	Origin			13K2A039		
rev.	description	date	name	part no: see table		

