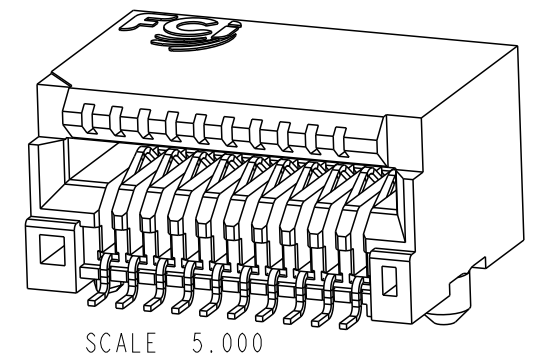
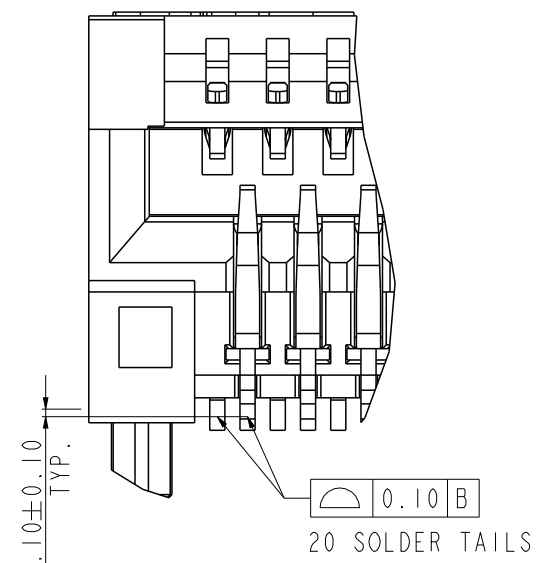
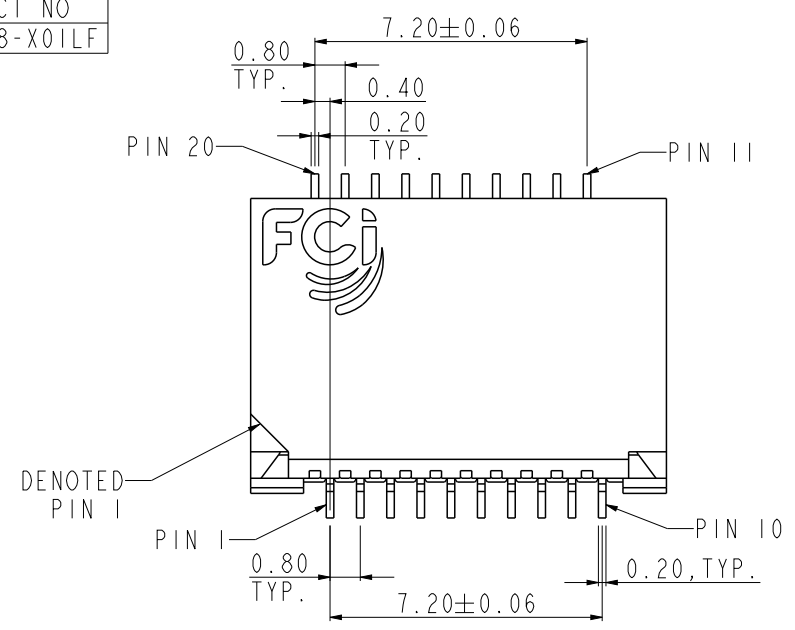
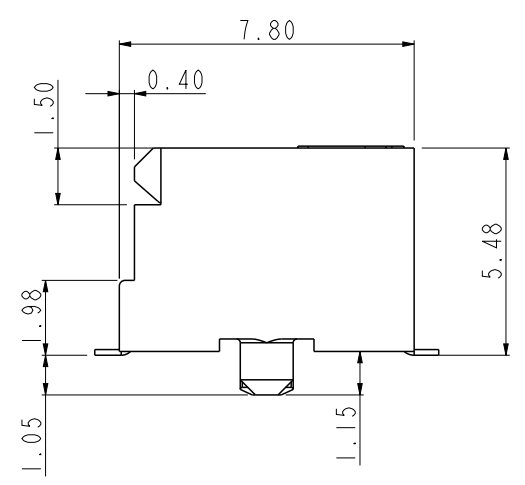
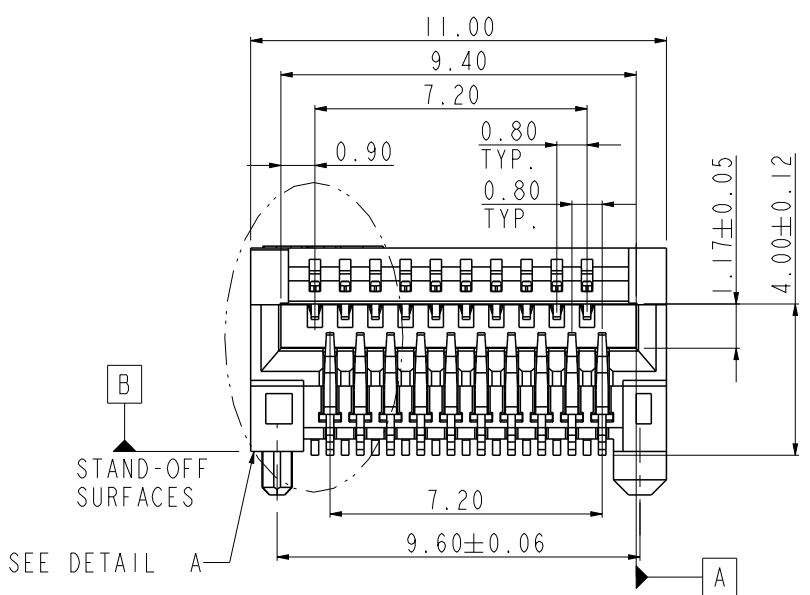


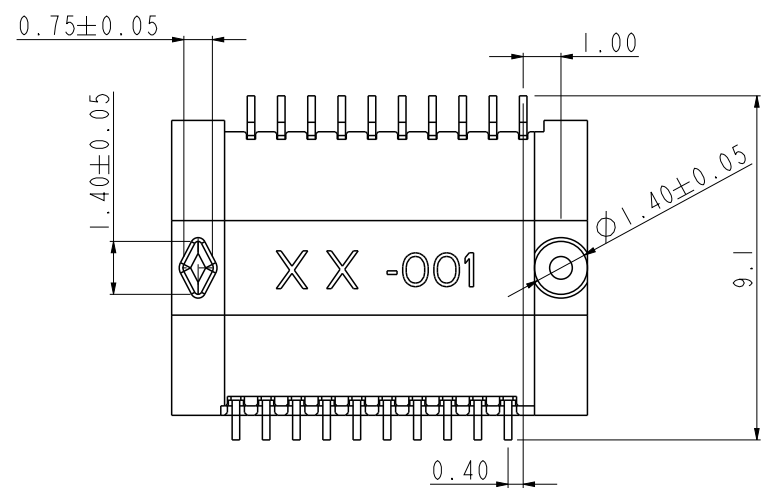
PRODUCT NO  
10120578-X01LF



DETAIL A  
SCALE 10.000



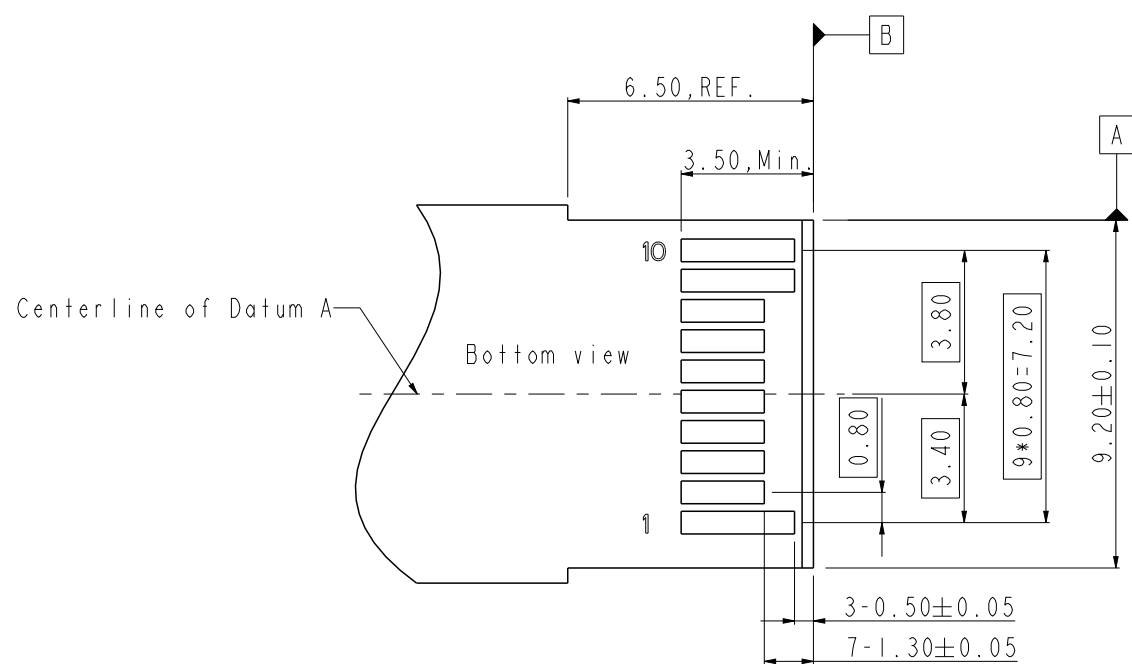
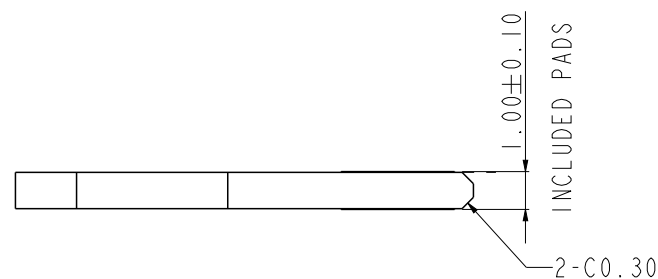
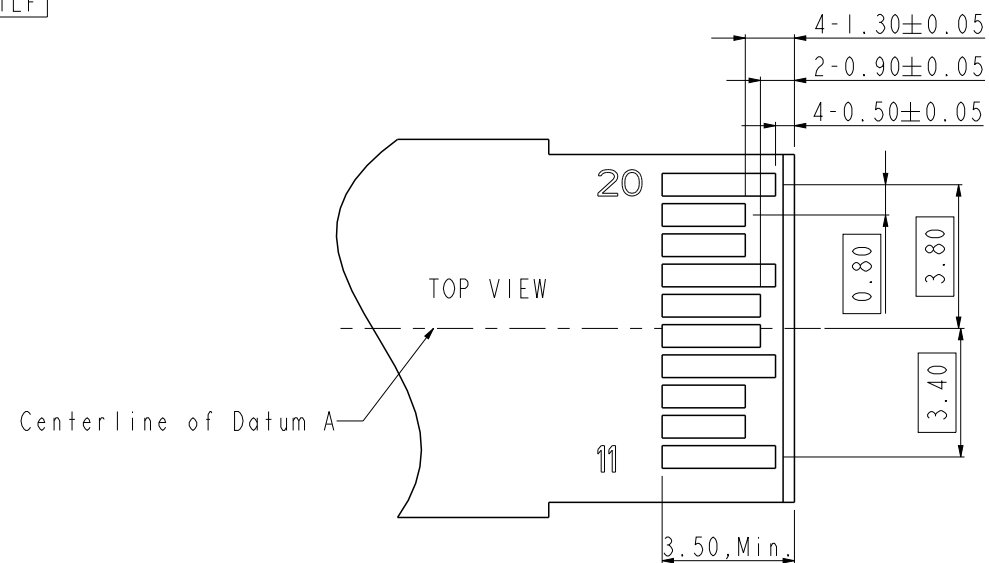
- NOTE:
- Material:  
HOUSING: HIGH TEMPERATURE LCP, BLACK  
UL 94 V-0 FLAME RETARDANT.  
TERMINAL: NICKEL COPPER ALLOY.  
PLATING SPEC AS BELOW:  
FOR CONTACT AREA:  
-101LF FOR 0.76 MICROMETERS MIN. THICKNESS GXT.  
-201LF FOR 0.38 MICROMETERS MIN. THICKNESS GOLD.  
-301LF FOR 0.76 MICROMETERS MIN. THICKNESS GOLD..  
FOR SOLDER AREA:  
MATTE PURE TIN 3 MICROMETERS MIN.  
FOR UNDERPLATING:  
2.54 MICROMETERS MIN. THICKNESS NICKEL
  - PACKING SPEC. GS-14-1030.
  - PRODUCT SPEC. GS-12-557.
  - PART NUMBER SCHEME: (EX. 10120578-X01LF),  
PLEASE FIND THE PAGE 2 FOR OPTIONS.
  - LEAD FREE NOTES:  
5a. THE HOUSING WILL WITHSTAND EXPOSURE TO 260° C PEAK TEMPERATURE FOR 10 SECONDS IN A CONVECTION, INFRA-RED OR VAPOR PHASE REFLOW OVEN.  
5b. THIS PRODUCT MEETS EUROPEAN UNION DIRECTIVES AND OTHER COUNTRY REGULATIONS AS DESCRIBED IN GS-22-008.
  - THIS CONNECTOR IS DESIGNED TO WORK WITH RAIL SYSTEM THAT ALLOW THE MODULE TO "FLOAT" IN THE VERTICAL PLANE AND FIND EQUILIBRIUM BETWEEN THE UPPER AND LOWER CONTACT ROWS. THIS CONNECTOR WILL NOT PERFORM PROPERLY IF USED IN SYSTEMS THAT MECHANICALLY BIAS THE MODULE IN THE VERTICAL PLANE SUCH AS RAIL SYSTEMS WITH EMI SPRINGS.



spec ref	*	dr	De-Feng, Qin	2012/03/26	projection	MM	size	A3	scale	5.000
tolerance std	ISO 406 ISO 1101	eng	De-Feng, Qin	2012/03/26			ecn no	-	rel level	Released
TOLERANCES UNLESS OTHERWISE SPECIFIED		chr	Terry Qiu	2012/03/27						
surface	ISO 1302	appr	Pei-Ming Zheng	2012/03/27	product family					
	linear	0.X	±0.50		20 POS. EDGE CARD		dwg no	10120578	rev	A
		0.XX	±0.25		RIGHT ANGLE TYPE, EDGE CARD CONNECTOR					
	angular	0°	±2°		cat. no.	*				

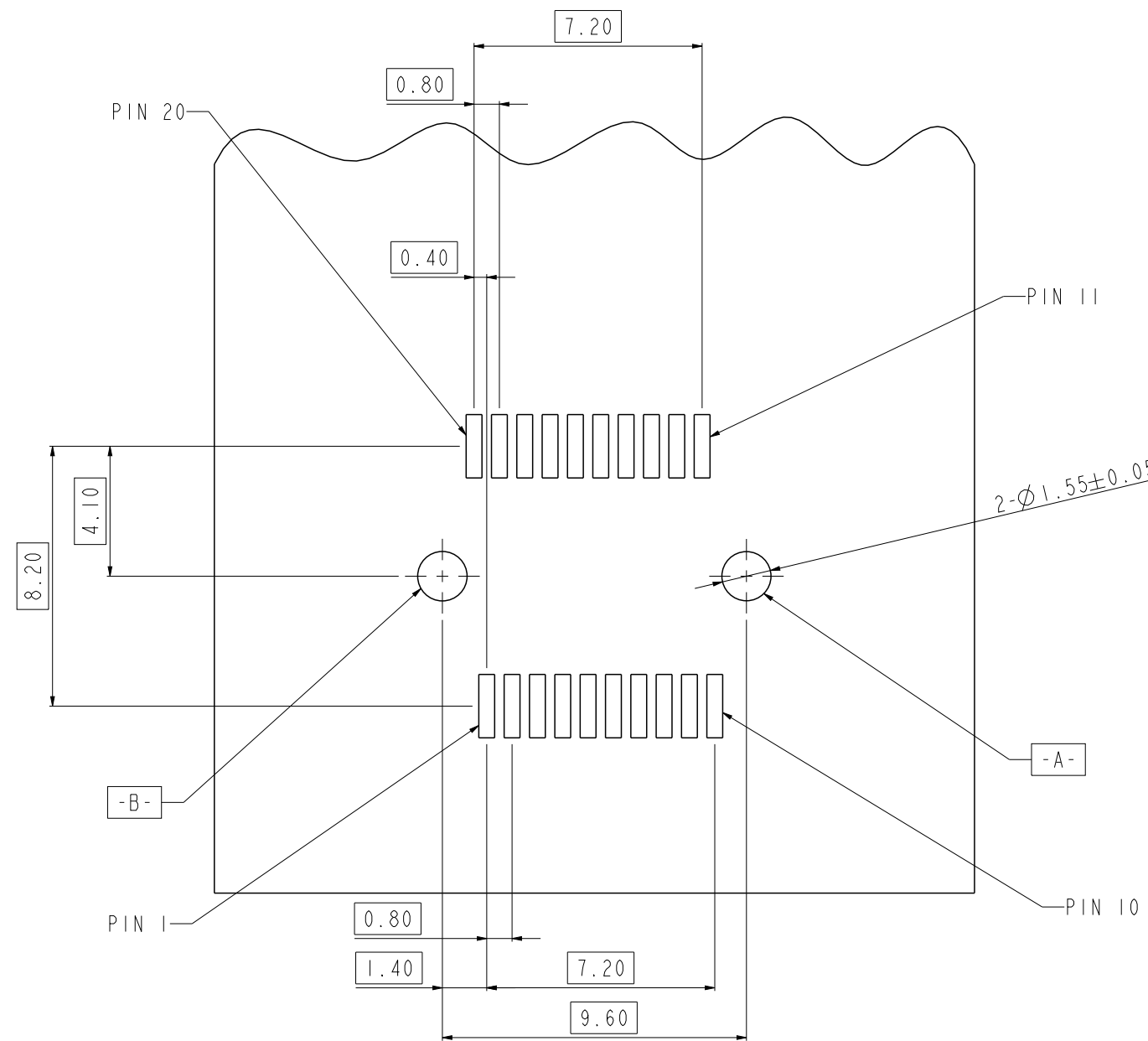
Copyright FCI.

PRODUCT NO  
10120578-X01LF



RECOMMENDED LAYOUT  
MATING PCB SIDE

PART NUMBER	TERMINALS (Contact plating options)	TERMINALS (Underplating and Solder tail plating)	REMARK
10120578-101LF	0.76um, Min.GXT	Underplating:2.54um Min. Nickel overall. Solder tail: 3um Min. Matte Tin.	
10120578-201LF	0.38um, Min. Gold	Underplating:2.54um Min. Nickel overall. Solder tail: 3um Min. Matte Tin.	
10120578-301LF	0.76um, Min.Gold	Underplating:2.54um Min. Nickel overall. Solder tail: 3um Min. Matte Tin.	



RECOMMENDED PCB LAYOUT  
CONNECTOR MOUNTING SIDE

spec ref	*	dr	De-Feng, Qin	2012/03/26	projection	MM	size	A3	scale	5.000
tolerance std	ISO 406 ISO 1101	eng	De-Feng, Qin	2012/03/26			ecn no	-	rel level	Released
surface	ISO 1302	chr	Terry Qiu	2012/03/27			product family			
linear	0.X ±0.25 0.XX ±0.13 0.XXX ±0.05	appr	Pei-Ming Zheng	2012/03/27			title 20 POS. EDGE CARD RIGHT ANGLE TYPE, EDGE CARD CONNECTOR		dwg no 10120578	rev A
angular	0° ±2°	www.fci.com		cat. no.	*	Product - Customer Drw		sheet 2 of 2		



Copyright FCI.