

| PART NUMBER | REVISION | DESCRIPTION | FEED TYPE |
|-------------|----------|---------------------------------|-----------|
| 2266445-2 | D | FINE CRIMP HEIGHT ADJUST | PNEUMATIC |
| 7-2266445-2 | D | PNEUMATIC AND CRIMP TOOLING KIT | PNEUMATIC |
| 7-2266445-7 | B | CRIMP TOOLING KIT | - |

| APPLICATOR DATA | | |
|--------------------------------------|----------------|------|
| CRIMP | SIZE | TYPE |
| WIRE | 2.79 mm [.110] | F |
| INSUL | 3.81 mm [.150] | OV |
| APPLICATOR INSTRUCTIONS 408-35042 | | |

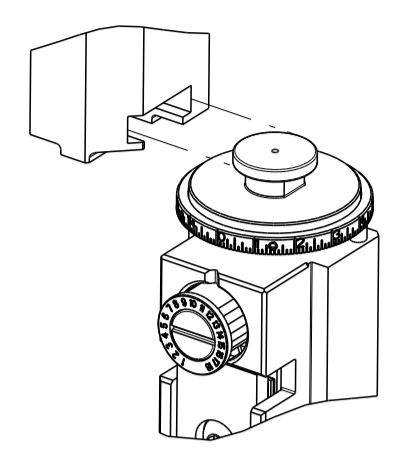
| | | | |
|--------------------------------------------------|--------------|-----------------------------------------------------------|--------------|
| TERMINAL DATA: FCI TERMINAL | | FCI CRIMP SPECIFICATION | |
| TERMINAL NAME: 2.8X0.8 FEMALE TERMINAL | | | |
| WIRE STRIP LENGTH 4.31-4.70 mm [.170-.185 IN] | | INSULATION DIAMETER RANGE Ø2.10-3.00 mm [.083-.118 IN] | |
| TERMINAL APPLICATION SPECIFICATION | | FCI SPEC Rev F | |
| TERMINALS APPLIED | | | |
| TE TERMINAL | FCI TERMINAL | TE TERMINAL | FCI TERMINAL |
| 2113553-1 | 211CC3S2150 | 2113553-4 | 211CC3S2190 |
| 2113553-2 | 211CC3S2160 | 2082129-1 | 211CC3S2160 |
| 2113553-3 | 211CC3S2460 | 2082129-2 | 211CC3S2150 |

| WIRE SIZE | CRIMP HEIGHT mm [INCH] | CRIMP HEIGHT REFERENCE SETTING |
|---------------|----------------------------|--------------------------------|
| 2.50mm2 | 1.77+/-0.05 [.070+/-0.002] | 3.2 |
| 2.00mm2 | 1.54+/-0.05 [.061+/-0.002] | 5.0 |
| 1.50mm2 | 1.47+/-0.05 [.058+/-0.002] | 6.2 |
| 0.35+1.00 mm2 | 1.40+/-0.05 [.055+/-0.002] | 7.0 |



- 1 RECOMMENDED SPARE PARTS
- 2 REFER TO SUPPLIED INSTRUCTION SHEET FOR CLEANING, LUBRICATION AND STORAGE OF APPLICATOR.
- 3 APPLY PART NUMBER 2-23419-6 LOCTITE TO THREADS OF ITEM 242.
- 4 CRIMP HEIGHT REFERENCE SETTING WAS THE SETTING USED WHEN THE APPLICATOR WAS QUALIFIED AT THE FACTORY. ADJUSTMENT MAY BE NECESSARY WHEN RUNNING APPLICATOR IN THE FIELD.
- 5 TERMINAL PITCH NOT COMPATIBLE WITH MECHANICAL FEED.
- 6 UNLESS SPECIFIED OTHERWISE TORQUE VALUES SHALL BE USED PER DOCUMENT, 101-35000.

ATLANTIC VERSION TERMINATOR INTERFACE ADAPTER



***WARNING**
ON INSTALLATION, SET WIRE DISC TO CRIMP HEIGHT REFERENCE SETTING FOR LARGEST WIRE SIZE. CRIMP HEIGHT REFERENCE SETTINGS GREATER THAN THE VALUE SHOWN MAY CAUSE DAMAGE TO THE CRIMP TOOLING, REFER TO THE INSTRUCTION SHEET FOR PROPER SETUP AND ADJUSTMENTS.

ATLANTIC VERSION
Shown on sheets 1 of 4 & 2 of 4
(Pacific version shown on sheets 3 of 4 & 4 of 4)

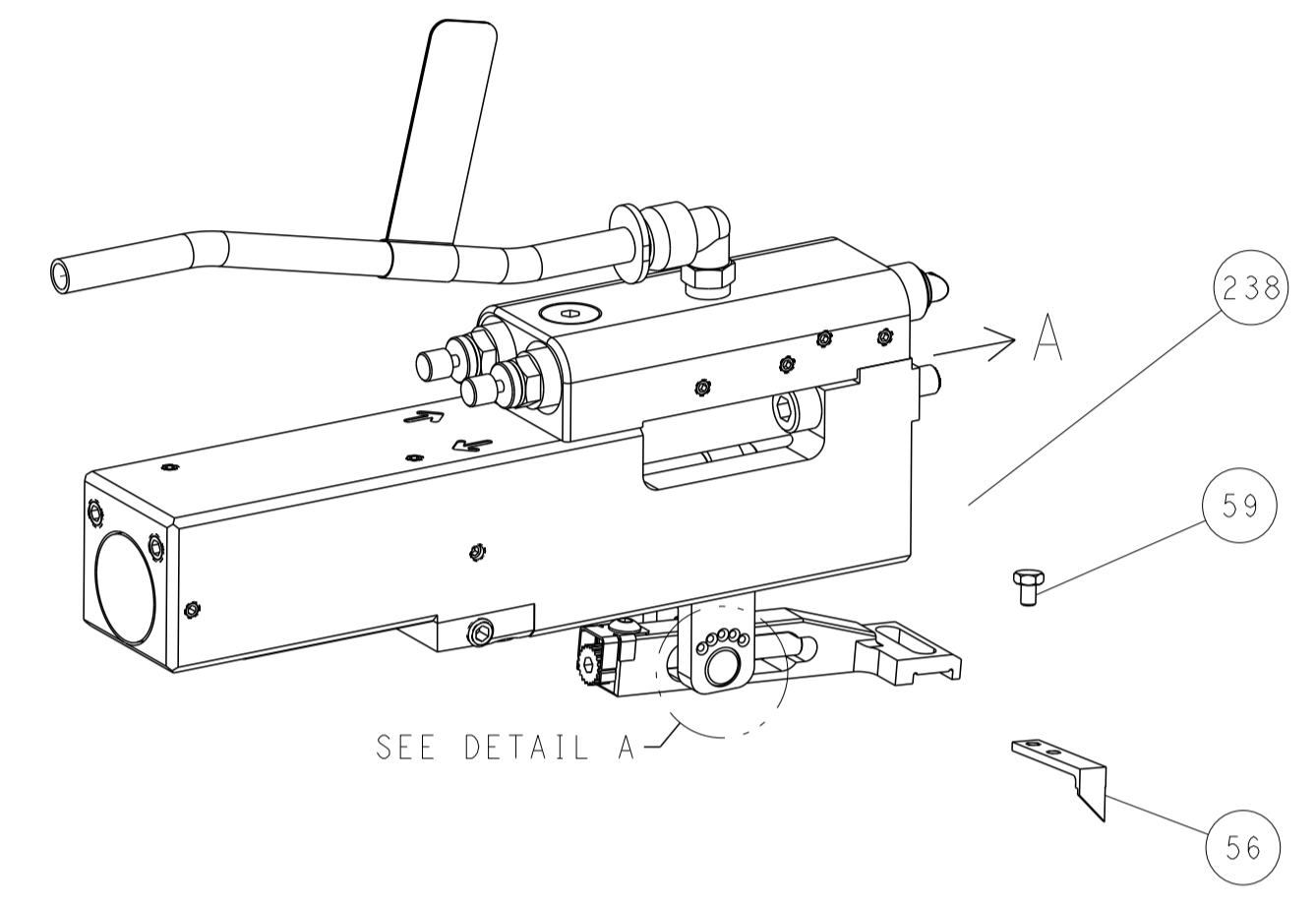
| LOC | DIST | REVISIONS | | | | | |
|-----|------|-----------|-----|---------------|-----------|-----|------|
| A | 66 | P | LTN | DESCRIPTION | DATE | OWN | APVD |
| | | A | | RELEASED | 02OCT2014 | LG | TE |
| | | B | | ECR-18-003114 | 01MAR2016 | MZ | CT |
| | | C | | ECR-18-8923 | 11JUN2018 | VLA | JDG |
| | | D | | ECR-20-013395 | 21SEP2020 | TB | RK |

| | | | | | |
|---|-----|-----|-------------|-------------------------------------|-----|
| - | 1 | 1 | 2119641-1 | FEED CAM, AIR FEED | 248 |
| - | 1 | 1 | 2119082-4 | CAM, SNAIL, INSULATION ADJUSTMENT | 244 |
| - | 1 | 1 | 2079764-1 | WASHER, WAVE SPRING, CREST-TO-CREST | 243 |
| - | 1 | 1 | 2119083-1 | RETAINER, INSULATION DIAL | 242 |
| - | 1 | 1 | 7-18023-7 | SCR, SKT HD CAP M3 X 4.0 | 241 |
| - | 1 | 1 | 2844940-1 | AIR FEED MODULE | 238 |
| - | REF | REF | 994970-2 | COUNTER, MAGNETIC | 164 |
| - | 1 | 1 | 2844908-1 | SCREW, LOCKING | 99 |
| - | 1 | 1 | 2844907-1 | POST, LOCKING | 98 |
| - | 1 | 1 | 318563-1 | GUARD, FRONT CHIP | 89 |
| - | 1 | 1 | 455888-4 | SPACER, CRIMPER | 82 |
| - | 1 | 1 | 1803607-3 | DOCUMENTATION PACKAGE | 71 |
| - | 1 | 1 | 2119740-1 | TAG, IDENTIFICATION | 67 |
| - | 2 | 2 | 2168078-1 | SCREW, DRIVE, RH, RoHS, 2 x .188 | 66 |
| - | 1 | 1 | 2168083-2 | SCR, SKT HD CAP, RoHS, M4 X 8.0 | 60 |
| - | 1 | 1 | 5-18022-5 | SCR, HEX HD CAP, M4 X 6.0 | 59 |
| - | 1 | 1 | 1338685-1 | PAWL, FEED | 56 |
| - | 4 | 4 | 2168083-3 | SCR, SKT HD CAP, RoHS, M4 X 12.0 | 54 |
| - | 2 | 2 | 1-2168083-0 | SCR, SKT HD CAP, RoHS, M4 X 10 | 53 |
| - | 1 | 1 | 1803382-6 | HOLD DOWN, SPRING LOADED | 50 |
| - | 1 | 1 | 18023-9 | SCR, SKT HD CAP M4 X 6.0 | 49 |
| - | 1 | 1 | 1803583-9 | APPLICATOR BASIC ASSEMBLY, SF | 46 |
| - | 1 | 1 | 1803515-1 | RAM ASSEMBLY, SF ATLANTIC | 44 |
| - | 1 | 1 | 1803602-1 | SCR, BHSC, RoHS (M8 X 25) | 41 |
| - | 1 | 1 | 1-1752356-8 | SUPPORT, TERMINAL | 34 |
| - | 2 | 2 | 2079383-5 | SCR, BHSC, RoHS (M4 X 20) | 33 |
| - | 2 | 2 | 3-2844962-0 | SPACER, CYLINDRICAL, STRIP GUIDE | 30 |
| - | 1 | 1 | 2844992-2 | ASSEMBLY, STRIP GUIDE | 29 |
| - | 1 | 1 | 455888-3 | SPACER, CRIMPER | 28 |
| - | 1 | 1 | 1320928-2 | STRIP GUIDE | 24 |
| - | 1 | 1 | 2168083-2 | SCR, SKT HD CAP, RoHS, M4 X 8.0 | 21 |
| - | 2 | 2 | 1-18028-2 | WASHER, FLAT, REG M4 | 20 |
| - | 1 | 1 | 2119533-1 | STRIPPER, SIDE FEED | 19 |
| - | 1 | 1 | 2119806-1 | INSERT, SHEAR | 13 |
| - | 1 | 1 | 3-22280-3 | SPRING, COMPRESSION | 12 |
| - | 1 | 1 | 1-356885-4 | STOP, SHEAR | 11 |
| - | 1 | 1 | 2119805-1 | SHEAR HOLDER, FRONT | 10 |
| - | 1 | 1 | 454276-5 | FLOATING SHEAR, FRONT | 9 |
| - | 1 | 2 | 1-1633923-5 | ANVIL, COMBINATION | 8 |
| - | - | - | - | - | 7 |
| - | - | - | - | - | 6 |
| - | 1 | 1 | 2119757-8 | DEPRESSOR, SHEAR | 5 |
| - | 1 | 1 | 4-238011-7 | BLOCK, CRIMPER SPACER | 4 |
| - | 1 | 2 | 5-2119785-8 | CRIMPER, INSULATION OVERLAP PREMIUM | 3 |
| - | 1 | 1 | 455888-4 | SPACER, CRIMPER | 2 |
| - | 1 | 2 | 7-456408-2 | CRIMPER, WIRE PREMIUM | 1 |

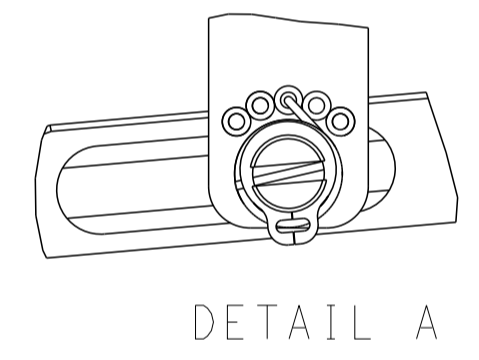
| | | | | | | | | | | | |
|-------------|--|----------------------------------------|--|-------------------------------|--|------------------------------|--|----------------------------------------|--|--------------------|--|
| DIMENSIONS: | | TOLERANCES UNLESS OTHERWISE SPECIFIED: | | DWG J.HOU 15AUGUST2014 | | CHK Y.YIN 15AUGUST2014 | | NAME Ocean Side Feed Applicator | | ITEM NO | |
| mm | | 0 PLC ± | | APVD J.GUO 15AUGUST2014 | | PRODUCT SPEC | | SIZE A1 | | CAGE CODE 00779 | |
| MATERIAL | | FINISH | | APPLICATION SPEC | | WEIGHT | | DRAWING NO 2266445 | | RESTRICTED TO | |
| | | | | | | | | SCALE 1:2 | | SHEET 1 of 4 | |
| | | | | | | | | Customer Accessible Production Drawing | | REV D | |

| LOC | DIST | REVISIONS | | | |
|-----|------|-------------|------|-----|------|
| P | LTN | DESCRIPTION | DATE | OWN | APVD |
| - | - | SEE SHEET 1 | - | - | - |
| | | | | | |
| | | | | | |

FEED TYPE PNEUMATIC

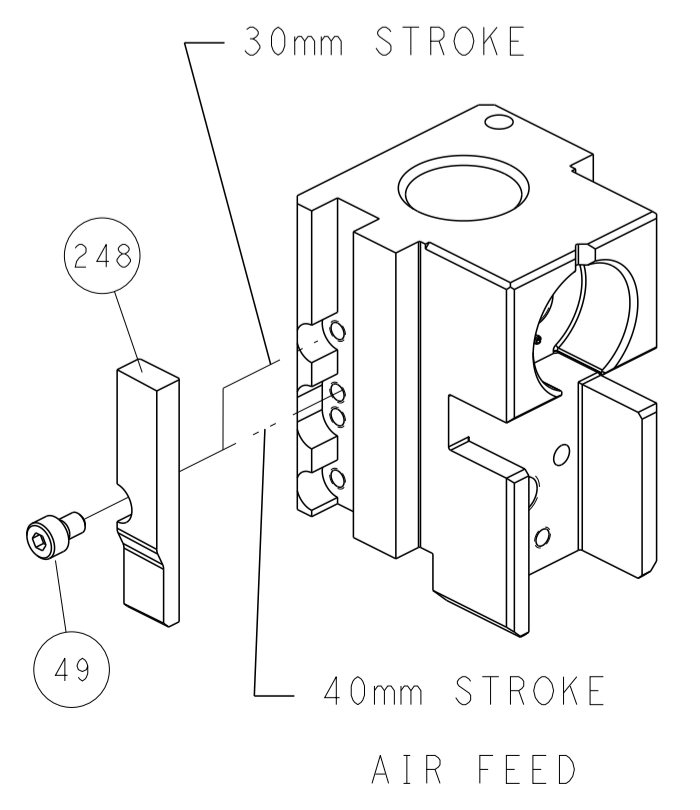


FEED SPRING SETTING POSITION
(SHOWN FROM REAR SIDE)

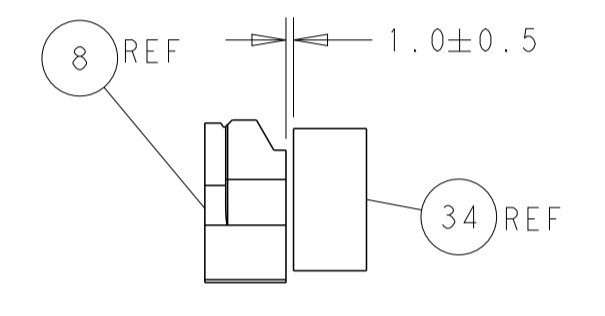
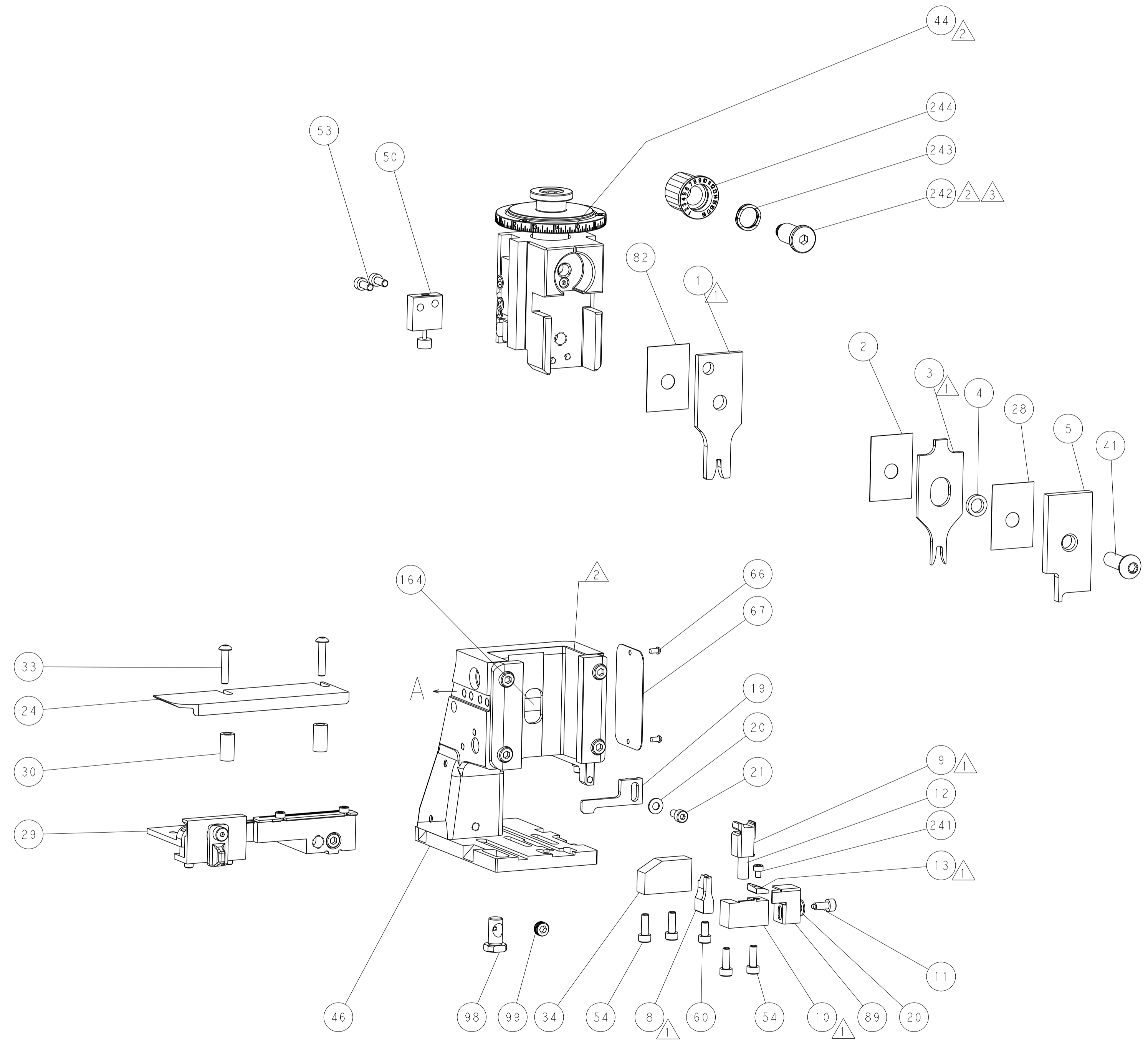


DETAIL A

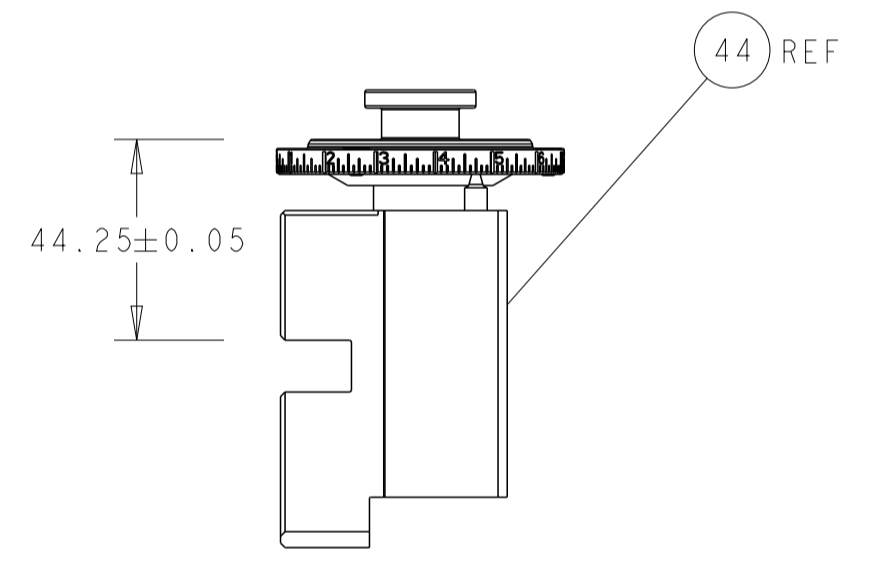
CAM POSITION



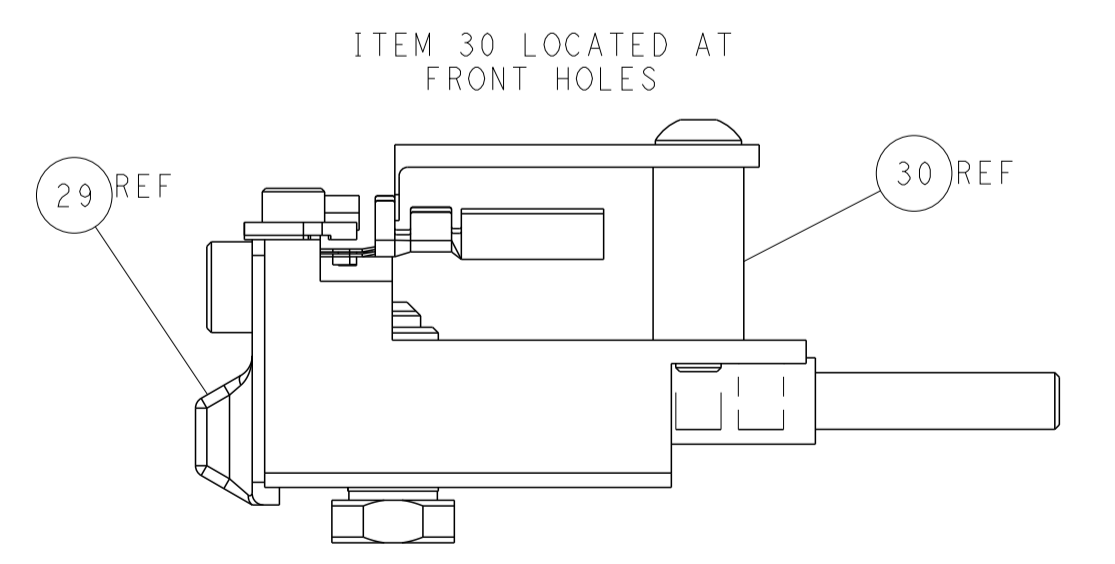
AIR FEED



TERMINAL SUPPORT LOCATION



RAM SET-UP



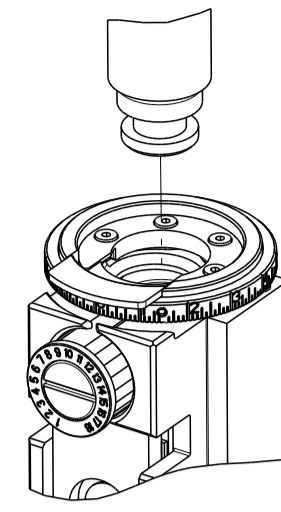
FEED TRACK POSITION
GUIDE BY INSULATION BARREL

ATLANTIC VERSION
 Shown on sheets 1 of 4 & 2 of 4
 (Pacific version shown on sheets 3 of 4 & 4 of 4)

| | | | | | | | |
|----------------------------------------|---------|----------------------------------------|---------|--------------------------|---------|--------------------------------------------|--|
| DIMENSIONS: | | TOLERANCES UNLESS OTHERWISE SPECIFIED: | | DWG: J.HOU 15AUGUST2014 | | TE Connectivity | |
| mm | 0 PLC ± | 1 PLC ± | 2 PLC ± | 3 PLC ± | 4 PLC ± | Harrisburg, PA 17105-3608 | |
| MATERIAL: | | FINISH: | | CHK: Y.YIN 15AUGUST2014 | | NAME: Ocean Side Feed Applicator | |
| APVD: J.GUO 15AUGUST2014 | | PRODUCT SPEC: | | APVD: J.GUO 15AUGUST2014 | | SIZE: CAGE CODE: DRAWING NO: RESTRICTED TO | |
| APPLICATION SPEC: | | WEIGHT: | | A1 00779 ©=2266445 | | SCALE: 1:2 SHEET 2 OF 4 REV D | |
| Customer Accessible Production Drawing | | SCALE: 1:2 | | SHEET 2 OF 4 | | REV D | |

| THIS DRAWING IS UNPUBLISHED. | RELEASED FOR PUBLICATION | | |
|--------------------------------------------------------------------|--------------------------|--------------------------|-----------|
| COPYRIGHT 20 BY TYCO ELECTRONICS CORPORATION. ALL RIGHTS RESERVED. | | | |
| PART NUMBER | REVISION | DESCRIPTION | FEED TYPE |
| 2-2266445-2 | D | FINE CRIMP HEIGHT ADJUST | PNEUMATIC |
| 7-2266445-7 | B | CRIMP TOOLING KIT | - |

PACIFIC VERSION TERMINATOR
INTERFACE ADAPTER



| APPLICATOR DATA | | |
|--------------------------------------|----------------|------|
| CRIMP | SIZE | TYPE |
| WIRE | 2.79 mm [.110] | F |
| INSUL | 3.81 mm [.150] | OV |
| APPLICATOR INSTRUCTIONS 408-35042 | | |

| | | | |
|----------------------------------------|----------------|------------------------------|--------------|
| TERMINAL DATA: FCI TERMINAL | | FCI CRIMP SPECIFICATION | |
| TERMINAL NAME: 2.8X0.8 FEMALE TERMINAL | | | |
| WIRE STRIP LENGTH | | INSULATION DIAMETER RANGE | |
| 4.31-4.70 mm [.170-.185 IN] | | Ø2.10-3.00 mm [.083-.118 IN] | |
| TERMINAL APPLICATION SPECIFICATION | FCI SPEC Rev F | - | - |
| TERMINALS APPLIED ⁵ | | | |
| TE TERMINAL | FCI TERMINAL | TE TERMINAL | FCI TERMINAL |
| 2113553-1 | 211CC3S2150 | 2113553-4 | 211CC3S2190 |
| 2113553-2 | 211CC3S2160 | 2082129-1 | 211CC3S2160 |
| 2113553-3 | 211CC3S2460 | 2082129-2 | 211CC3S2150 |

| WIRE SIZE | CRIMP HEIGHT mm [INCH] | CRIMP HEIGHT REFERENCE SETTING |
|---------------------------|----------------------------|--------------------------------|
| 2.50mm ² | 1.77+/-0.05 [.070+/- .002] | 3.2 |
| 2.00mm ² | 1.54+/-0.05 [.061+/- .002] | 5.0 |
| 1.50mm ² | 1.47+/-0.05 [.058+/- .002] | 6.2 |
| 0.35+1.00 mm ² | 1.40+/-0.05 [.055+/- .002] | 7.0 |

- RECOMMENDED SPARE PARTS
- REFER TO SUPPLIED INSTRUCTION SHEET FOR CLEANING, LUBRICATION AND STORAGE OF APPLICATOR.
- APPLY PART NUMBER 2-23419-6 LOCTITE TO THREADS OF ITEM 242.
- CRIMP HEIGHT REFERENCE SETTING WAS THE SETTING USED WHEN THE APPLICATOR WAS QUALIFIED AT THE FACTORY. ADJUSTMENT MAY BE NECESSARY WHEN RUNNING APPLICATOR IN THE FIELD.
- TERMINAL PITCH NOT COMPATIBLE WITH MECHANICAL FEED.
- 6. UNLESS SPECIFIED OTHERWISE TORQUE VALUES SHALL BE USED PER DOCUMENT, 101-35000.

***WARNING**
ON INSTALLATION, SET WIRE DISC TO CRIMP HEIGHT REFERENCE SETTING FOR LARGEST WIRE SIZE. CRIMP HEIGHT REFERENCE SETTINGS GREATER THAN THE VALUE SHOWN MAY CAUSE DAMAGE TO THE CRIMP TOOLING, REFER TO THE INSTRUCTION SHEET FOR PROPER SETUP AND ADJUSTMENTS.

| LOC | DIST | REVISIONS | | | | | |
|-----|------|-----------|-----|-------------|------|-----|------|
| A | 66 | P | LTN | DESCRIPTION | DATE | OWN | APVD |
| | | - | | SEE SHEET 1 | - | - | - |

| | | | | |
|--------------|-----|-------------|-------------------------------------|-----|
| - | 1 | 2119082-4 | CAM, SNAIL, INSULATION ADJUSTMENT | 244 |
| - | 1 | 2079764-1 | WASHER, WAVE SPRING, CREST-TO-CREST | 243 |
| ³ | - | 2119083-1 | RETAINER, INSULATION DIAL | 242 |
| - | 1 | 7-18023-7 | SCR, SKT HD CAP M3 X 4.0 | 241 |
| - | 1 | 2844940-1 | AIR FEED MODULE | 238 |
| - | REF | 994970-2 | COUNTER, MAGNETIC | 164 |
| - | 1 | 2119641-2 | FEED CAM, AIR FEED | 151 |
| - | 1 | 2168083-8 | SCR, SKT HD CAP, RoHS, M4 X 16 | 144 |
| - | 4 | 2168083-9 | SCR, SKT HD CAP, RoHS, M4 X 20 | 143 |
| - | 1 | 1-1803583-0 | APPLICATOR BASIC ASSEMBLY, SF | 141 |
| - | 1 | 1803516-1 | RAM ASSEMBLY, SF PACIFIC | 140 |
| - | 1 | 2844908-1 | SCREW, LOCKING | 99 |
| - | 1 | 2844907-1 | POST, LOCKING | 98 |
| - | 1 | 318563-1 | GUARD, FRONT CHIP | 89 |
| - | 1 | 455888-4 | SPACER, CRIMPER | 82 |
| - | 1 | 1803607-3 | DOCUMENTATION PACKAGE | 71 |
| - | 1 | 2119740-1 | TAG, IDENTIFICATION | 67 |
| - | 2 | 2168078-1 | SCREW, DRIVE, RH, RoHS, 2 x .188 | 66 |
| - | 1 | 5-18022-5 | SCR, HEX HD CAP, M4 X 6.0 | 59 |
| - | 1 | 1338685-1 | PAWL, FEED | 56 |
| - | 2 | 1-2168083-0 | SCR, SKT HD CAP, RoHS, M4 X 10 | 53 |
| - | 1 | 1803382-6 | HOLD DOWN, SPRING LOADED | 50 |
| - | 1 | 18023-9 | SCR, SKT HD CAP M4 X 6.0 | 49 |
| - | 1 | 1803602-1 | SCR, BHSC, RoHS (M8 X 25) | 41 |
| - | 1 | 1-1752356-8 | SUPPORT, TERMINAL | 34 |
| - | 2 | 2079383-5 | SCR, BHSC, RoHS (M4 X 20) | 33 |
| - | 2 | 3-2844962-0 | SPACER, CYLINDRICAL, STRIP GUIDE | 30 |
| - | 1 | 2844992-2 | ASSEMBLY, STRIP GUIDE | 29 |
| - | 1 | 455888-3 | SPACER, CRIMPER | 28 |
| - | 1 | 1320928-2 | STRIP GUIDE | 24 |
| - | 1 | 2168083-2 | SCR, SKT HD CAP, RoHS, M4 X 8.0 | 21 |
| - | 2 | 1-18028-2 | WASHER, FLAT, REG M4 | 20 |
| - | 1 | 2119533-1 | STRIPPER, SIDE FEED | 19 |
| ¹ | - | 2119806-1 | INSERT, SHEAR | 13 |
| - | 1 | 3-22280-3 | SPRING, COMPRESSION | 12 |
| - | 1 | 1-356885-4 | STOP, SHEAR | 11 |
| ¹ | - | 2119805-1 | SHEAR HOLDER, FRONT | 10 |
| ¹ | - | 454276-5 | FLOATING SHEAR, FRONT | 9 |
| ¹ | 1 | 1-1633923-5 | ANVIL, COMBINATION | 8 |
| - | - | - | - | 7 |
| - | - | - | - | 6 |
| - | 1 | 2119757-8 | DEPRESSOR, SHEAR | 5 |
| - | 1 | 4-238011-7 | BLOCK, CRIMPER SPACER | 4 |
| ¹ | 1 | 5-2119785-8 | CRIMPER, INSULATION OVERLAP PREMIUM | 3 |
| - | 1 | 455888-4 | SPACER, CRIMPER | 2 |
| ¹ | 1 | 7-456408-2 | CRIMPER, WIRE PREMIUM | 1 |

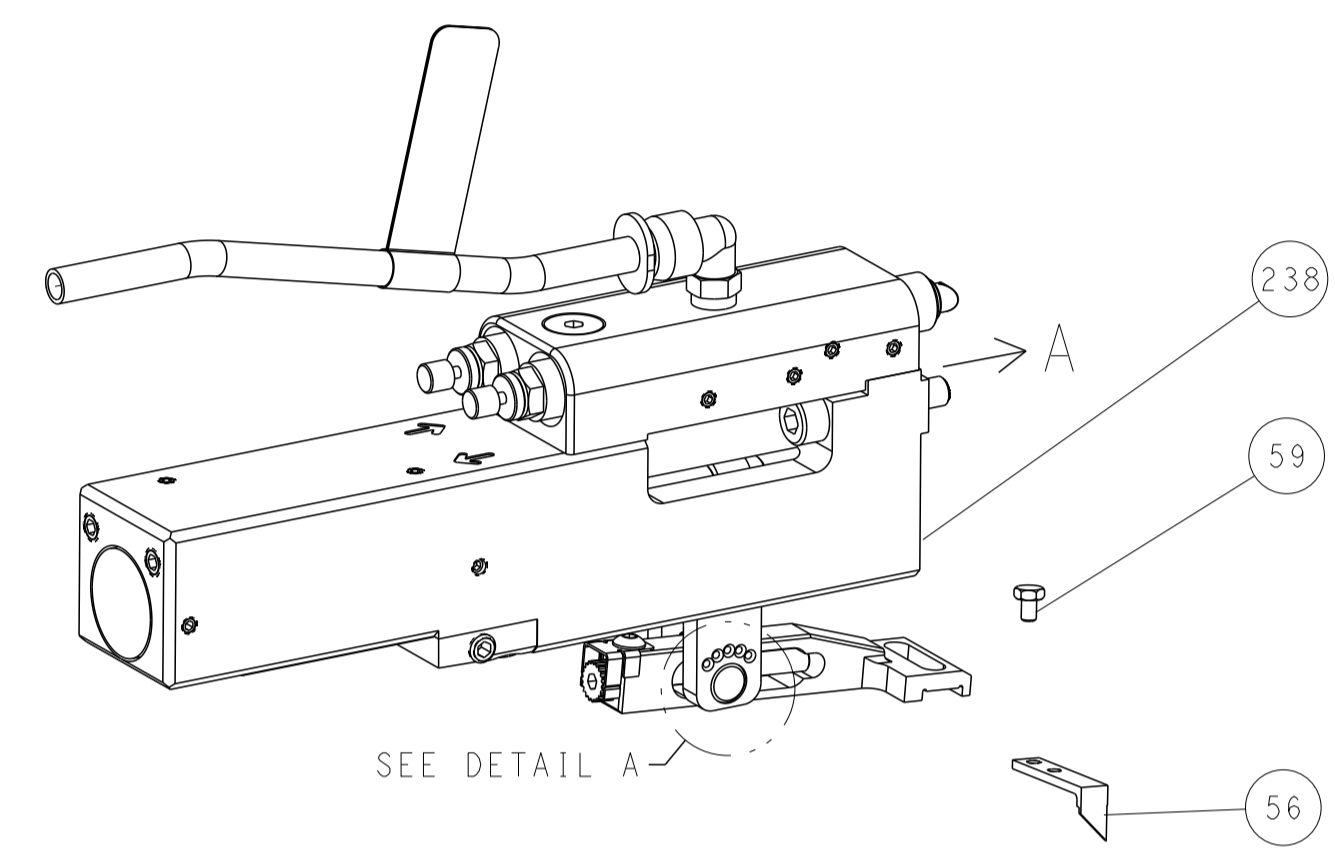
PACIFIC VERSION
Shown on sheets 3 of 4 & 4 of 4
(Atlantic version shown on sheets 1 of 4 & 2 of 4)

| | | | |
|--------------------------------------------------------------------------------------------------------------------------------------------------------------------------------------------------------------------------------------------------------------------------------------------------------------------------------------------|--|----------------------------------------------------------------------------------------------------------------------------------|------------------------------------------------------------|
| <small>THIS IS A PRELIMINARY UNCONTROLLED DOCUMENT. FOR THE LATEST REVISION INFORMATION, CONTACT THE SUPPLIER OR VISIT THE WEBSITE: WWW.TYCOELECTRONICS.COM</small> <small>THIS IS A PRELIMINARY UNCONTROLLED DOCUMENT. FOR THE LATEST REVISION INFORMATION, CONTACT THE SUPPLIER OR VISIT THE WEBSITE: WWW.TYCOELECTRONICS.COM</small> | | DWN J.HOU 15AUGUST2014 CHK Y.YIN 15AUGUST2014 APVD U.GUO 15AUGUST2014 | TE Connectivity Harrisburg, PA 17105-3608 |
| DIMENSIONS: mm TOLERANCES UNLESS OTHERWISE SPECIFIED: 0 PLC ± 1 PLC ± 2 PLC ± 3 PLC ± 4 PLC ± ANGLES ± FINISH | | NAME: Ocean Side Feed Applicator SIZE: A1 CAGE CODE: 00779 DRAWING NO: 2266445 SCALE: 1:2 SHEET: 3 OF 4 REV: D | RESTRICTED TO: - Customer Accessible Production Drawing |

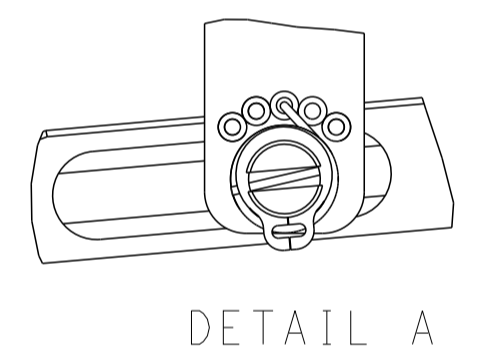
| LOC | DIST | REVISIONS | | | | | |
|-----|------|-----------|-----|-------------|------|-----|------|
| | | P | LTN | DESCRIPTION | DATE | OWN | APVD |
| A | 66 | - | - | SEE SHEET 1 | - | - | - |
| | | | | | | | |
| | | | | | | | |

FEED TYPE

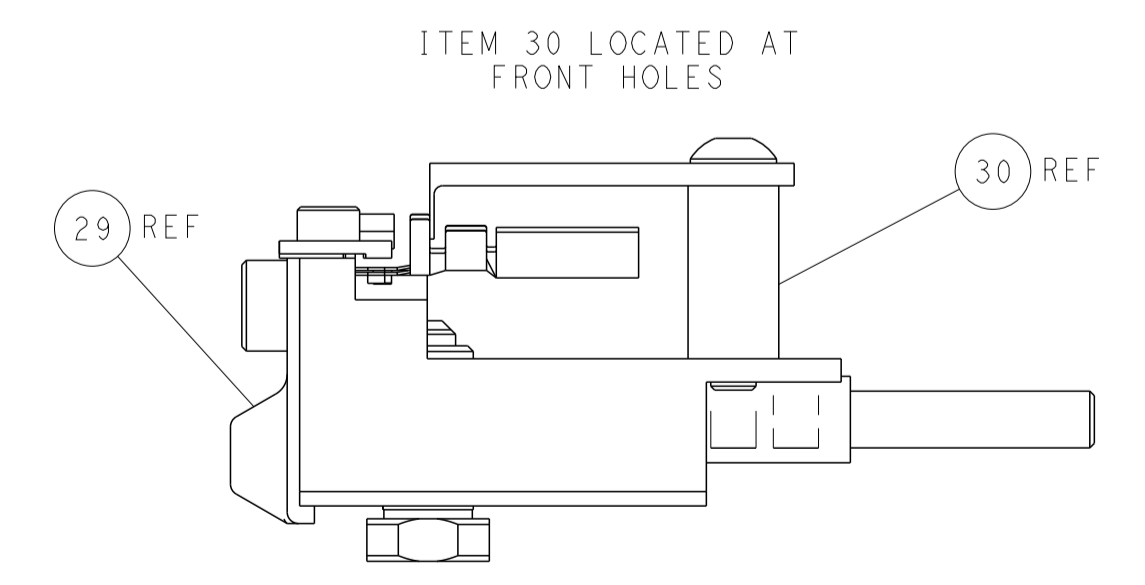
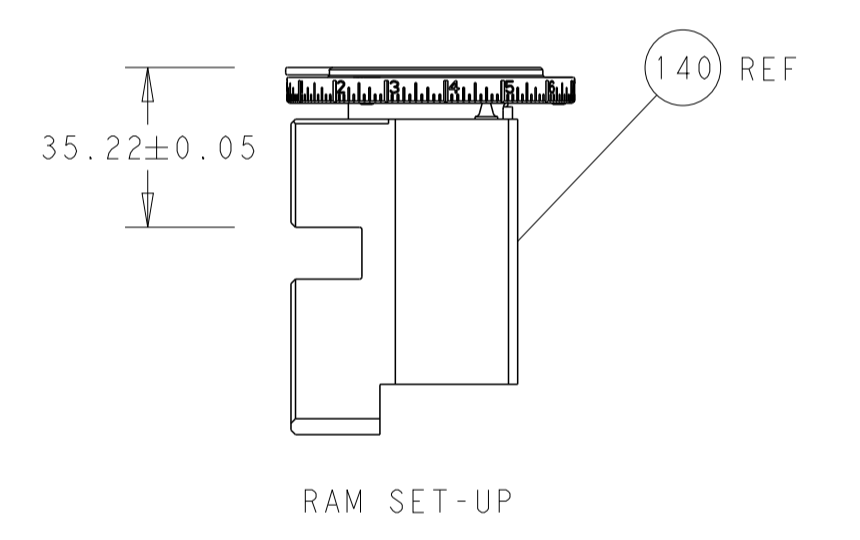
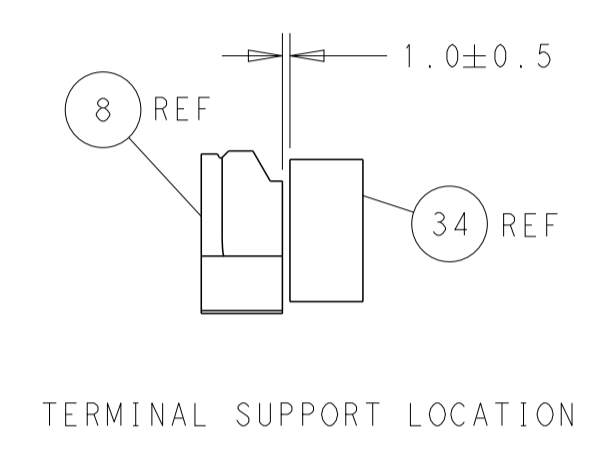
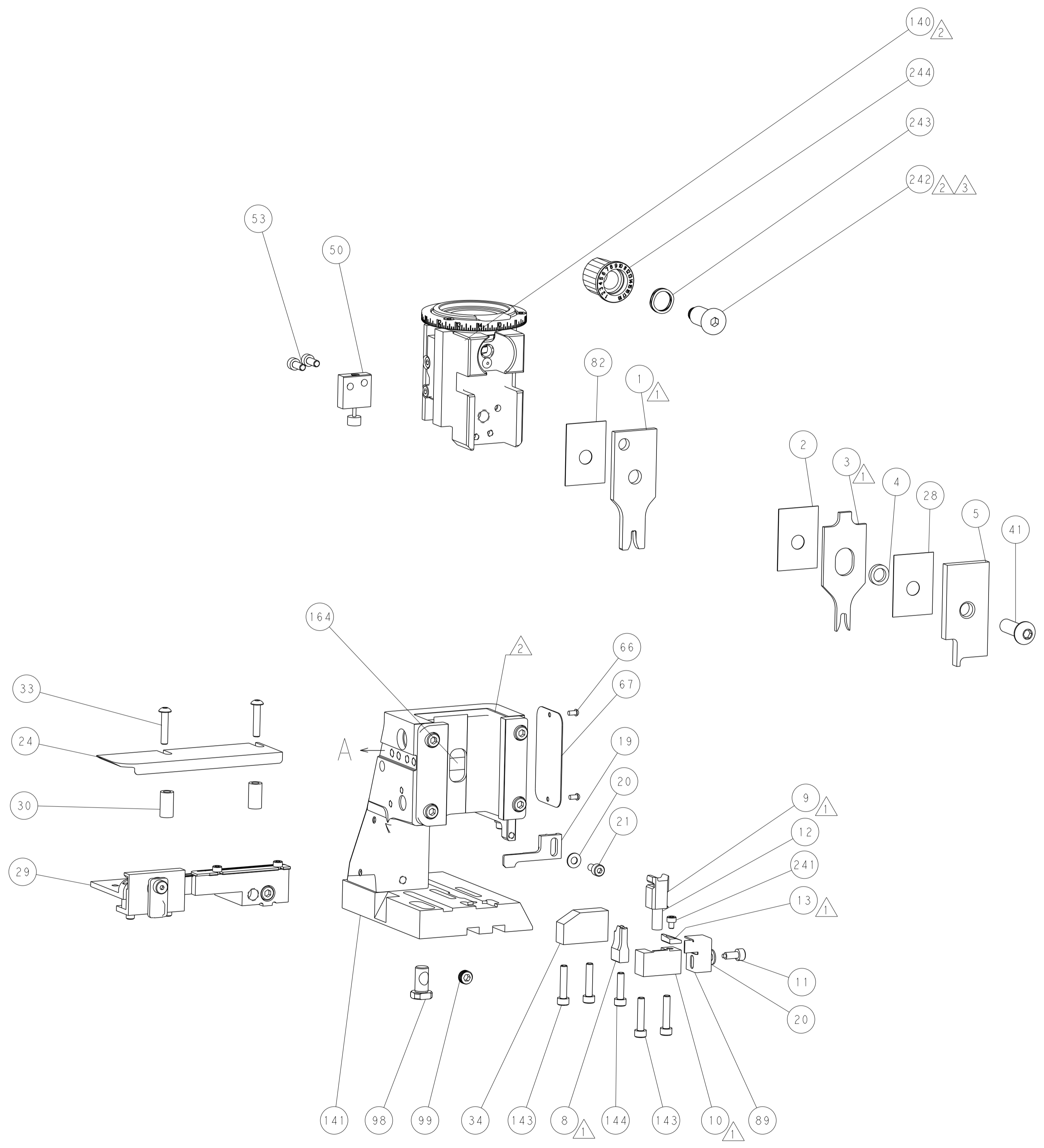
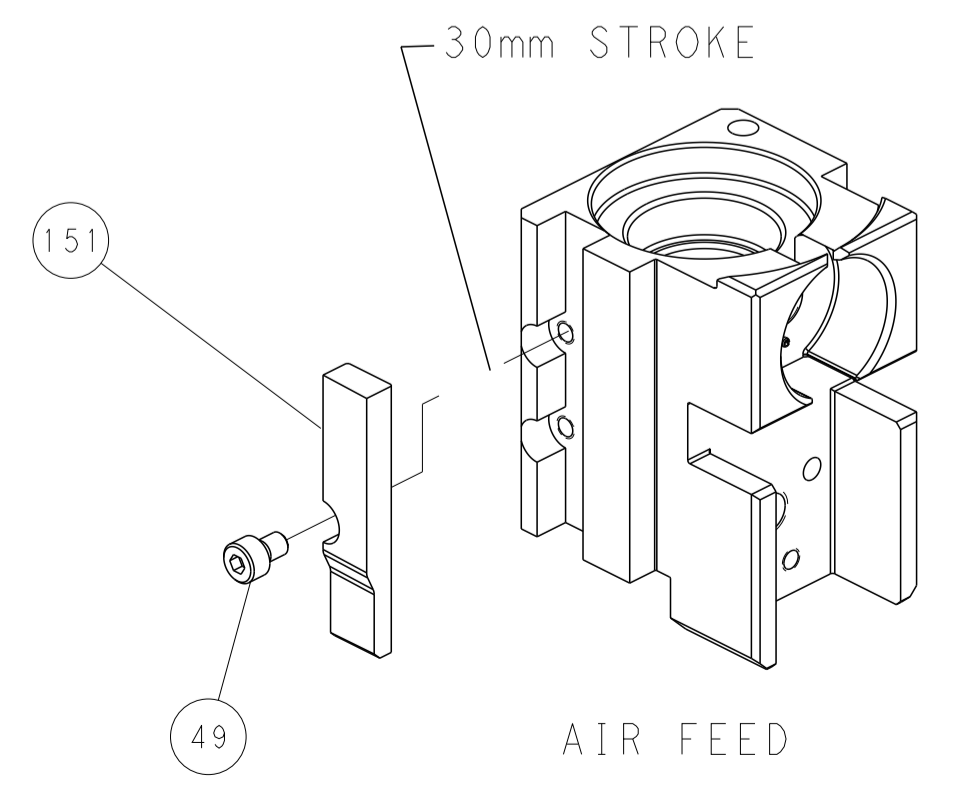
PNEUMATIC



FEED SPRING SETTING POSITION (SHOWN FROM REAR SIDE)



CAM POSITION



PACIFIC VERSION
 Shown on sheets 3 of 4 & 4 of 4
 (Atlantic version shown on sheets 1 of 4 & 2 of 4)

| | | | |
|--------------------------------------------------------------------------------------------------------------------------------------------------------------------------------------------------------------------------------------------------------------------------------------------------------------------------------------------------------------------------------------------------------------------------------------------------------------------------------------------------------------------------------------------------------------------------------------------|----------------------------------------------------------------------|-----------------------------------------------------------------------------|----------------------------------------------------------------------------------------------------------------------------|
| <small>THIS DRAWING IS UNPUBLISHED. RELEASED FOR PUBLICATION. ALL RIGHTS RESERVED. © 2014 BY TYCO ELECTRONICS CORPORATION. THIS IS THE PROPERTY OF TYCO ELECTRONICS CORPORATION AND IS LOANED TO YOU FOR YOUR USE ONLY. IT IS TO BE RETURNED TO TYCO ELECTRONICS CORPORATION AT THE END OF YOUR PROJECT. NO PART OF THIS DRAWING IS TO BE REPRODUCED OR TRANSMITTED IN ANY FORM OR BY ANY MEANS, ELECTRONIC OR MECHANICAL, INCLUDING PHOTOCOPYING, RECORDING, OR BY ANY INFORMATION STORAGE AND RETRIEVAL SYSTEM, WITHOUT PERMISSION IN WRITING FROM TYCO ELECTRONICS CORPORATION.</small> | | DWN J.HOU 15AUGUST2014 CHK Y.YIN 15AUGUST2014 APVD H.GUO 15AUGUST2014 | NAME STE TE Connectivity Harrisburg, PA 17105-3608 |
| DIMENSIONS: mm 0 PLC ± 1 PLC ± 2 PLC ± 3 PLC ± 4 PLC ± ANGLES ± MATERIAL - FINISH - | TOLERANCES UNLESS OTHERWISE SPECIFIED: ± ± ± ± ± ± | PRODUCT SPEC APPLICATION SPEC WEIGHT - SCALE 1:2 | SIZE CAGE CODE DRAWING NO RESTRICTED TO A1 00779 C=2266445 Customer Accessible Production Drawing SHEET 4 OF 4 REV D |