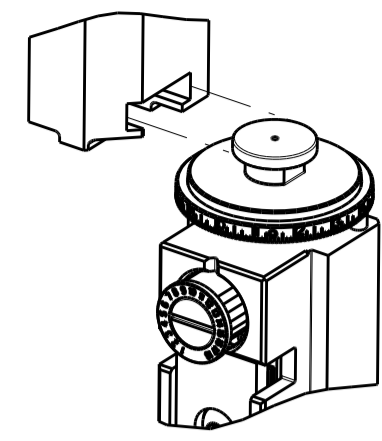


PART NUMBER	REVISION	DESCRIPTION	FEED TYPE
2150010-1	B	FINE CRIMP HEIGHT ADJUST	MECHANICAL
2150010-2	B	FINE CRIMP HEIGHT ADJUST	PNEUMATIC
7-2150010-1	B	MECHANICAL AND CRIMP TOOLING KIT	MECHANICAL
7-2150010-2	B	PNEUMATIC AND CRIMP TOOLING KIT	PNEUMATIC
7-2150010-7	A	CRIMP TOOLING KIT	-
7-2150010-8	B	OVERLAP INSULATION CRIMPER	△

ATLANTIC VERSION TERMINATOR INTERFACE ADAPTER



APPLICATOR DATA		
CRIMP	SIZE	TYPE
WIRE	2.29 mm [.090]	F
INSUL	4.06 mm [.160]	F
INSUL	4.06 mm [.160]	OV

APPL INSTRUCTIONS
408-35043

TERMINAL DATA: TE TERMINAL		TE CRIMP SPECIFICATION	
TERMINAL NAME: .140 DIA SHUR PLUG RECEPTACLE			
WIRE STRIP LENGTH		INSULATION DIAMETER RANGE	
3.80-4.60 mm [.150-.181 IN]		∅2.30-3.30 mm [.091-.130 IN]	
TERMINAL APPLICATION SPECIFICATION			
TERMINALS APPLIED			
TE TERMINAL	TE TERMINAL	TE TERMINAL	TE TERMINAL
626399-1	626399-2		

WIRE SIZE	CRIMP HEIGHT mm [INCH]	CRIMP HEIGHT REFERENCE SETTING
16 AWG	1.55+/-0.05 [.061+/-0.002]	9.2
18 AWG	1.40+/-0.05 [.055+/-0.002]	10.6
20 AWG	1.29+/-0.05 [.051+/-0.002]	11.6

- △ RECOMMENDED SPARE PARTS
- △ REFER TO SUPPLIED INSTRUCTION SHEET FOR CLEANING, LUBRICATION AND STORAGE OF APPLICATOR.
- △ APPLY PART NUMBER 1-23419-5 LOCTITE TO THREADS OF ITEM 50. APPLY PART NUMBER 2-23419-6 LOCTITE TO THREADS OF ITEM 242.
- △ CRIMP HEIGHT REFERENCE SETTING WAS THE SETTING USED WHEN THE APPLICATOR WAS QUALIFIED AT THE FACTORY. ADJUSTMENT MAY BE NECESSARY WHEN RUNNING APPLICATOR IN THE FIELD.
- 5. UNLESS SPECIFIED OTHERWISE TORQUE VALUES SHALL BE USED PER DOCUMENT, 101-35000.
- △ FOR CASES THAT IT NEED TO USE WIRES AS DIN 72551-6 OR AVS(INSUL. ∅1.6MM-2.7MM) IT IS RECOMMENDED TO USE THE INSULATION CRIMPER OV, PN:5-1803221-5.

***WARNING**
ON INSTALLATION, SET WIRE DISC TO CRIMP HEIGHT REFERENCE SETTING FOR LARGEST WIRE SIZE. CRIMP HEIGHT REFERENCE SETTINGS GREATER THAN THE VALUE SHOWN MAY CAUSE DAMAGE TO THE CRIMP TOOLING, REFER TO THE INSTRUCTION SHEET FOR PROPER SETUP AND ADJUSTMENTS.

ATLANTIC VERSION
Shown on sheets 1 of 4 & 2 of 4
(Pacific version shown on sheets 3 of 4 & 4 of 4)

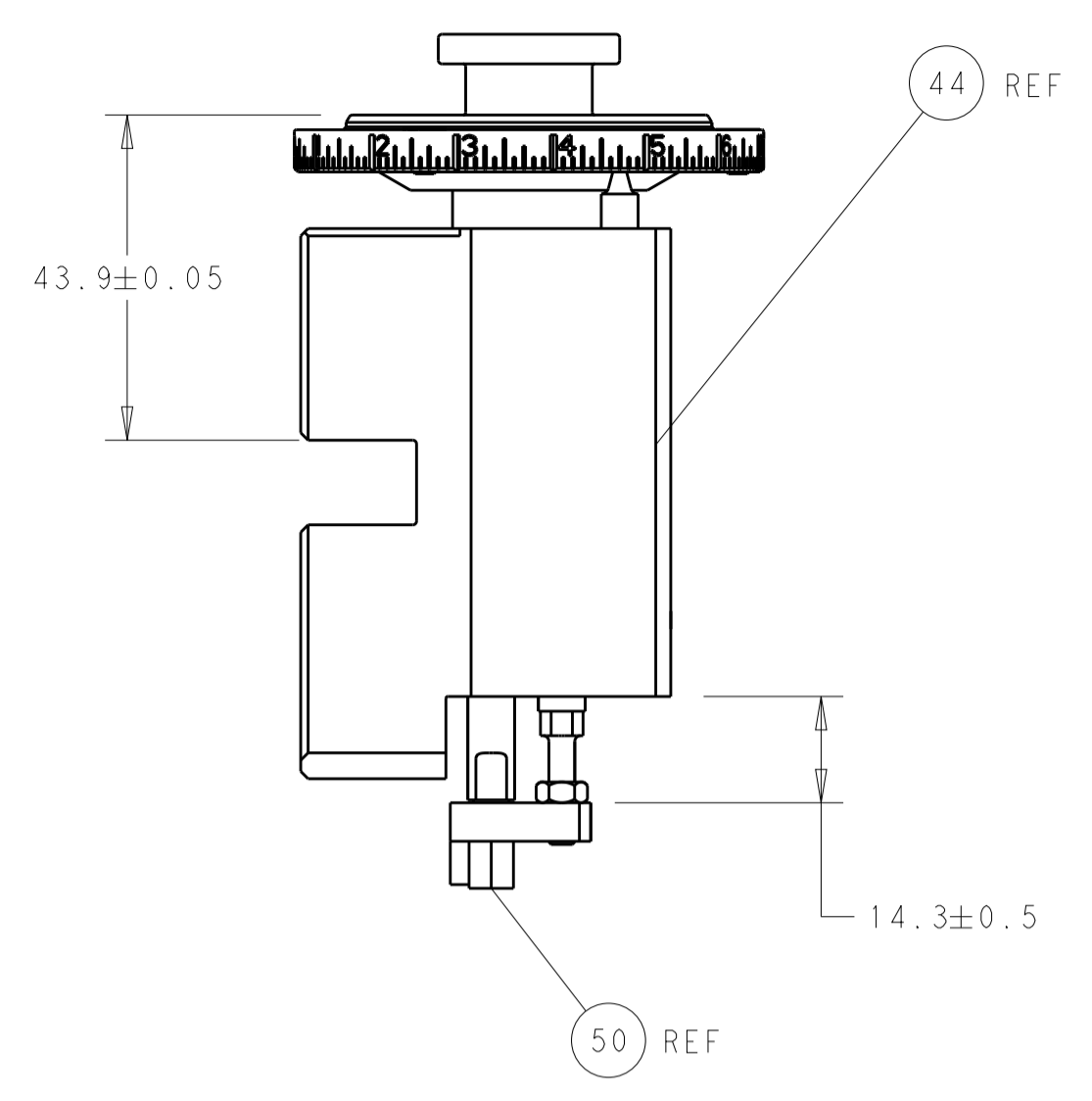
LOC	DIST	REVISIONS					
		P	LTN	DESCRIPTION	DATE	DWN	APVD
A	66	A		RELEASED	24APR2012	CC	SX
		A1		CORRECT ECR-12-008529	09MAY2012	CC	SX
		B		ECR-19-008439	28MAY2019	JAH	CT
		B1		ECR-19-011626	24JUL2019	FZ	RK

△6	1	-	-	-	-	5-1803221-5	CRIMPER, INSULATION OVERLAP PREMIUM	253
	-	-	1	-	-	2119640-1	PUSH ROD, AIR FEED	250
	-	-	1	-	-	2079988-1	BUSHING, LCH5-12, MISUMI	249
	-	-	1	-	-	2119641-1	FEED CAM, AIR FEED	248
	-	-	1	1	1	2119082-9	CAM, SNAIL, INSULATION ADJUSTMENT	244
	-	-	1	1	1	2079764-1	WASHER, WAVE SPRING, CREST-TO-CREST	243
△3	-	-	1	1	1	2119083-1	RETAINER, INSULATION DIAL	242
	-	-	-	1	-	2119580-1	MECHANICAL FEED ASSEMBLY	239
	-	-	1	-	-	2063440-1	AIR FEED MODULE	238
	-	-	1	1	1	1-18028-0	WASHER, FLAT, REG M8	192
	-	-	1	1	1	6-993111-6	PIN, SLOTTED SPRING 3.0 X 14.0	177
	-	-	1	1	1	8-22280-7	SPRING, COMPRESSION	176
	-	-	1	1	1	1752353-2	GUIDE PIN, HOLDDOWN	175
	-	-	1	1	1	1901680-2	GUIDE PIN, HOLDDOWN	174
	-	-	2	-	-	21045-3	RING, RETAIN, EXTERN, 3/16 CRESCENT	172
	-	-	REF	REF	REF	994970-2	COUNTER, MAGNETIC	164
	-	-	1	-	-	240638-1	SPRING, FEED FINGER	163
	-	-	1	-	-	3-23627-7	PIN, RETAIN, GRVD, 3/16 X .854	137
	-	-	1	1	1	455888-3	SPACER, CRIMPER	82
	-	-	1	1	1	1803607-2	DOCUMENTATION PACKAGE	71
	-	-	2	2	2	2-18032-2	SCR, SET, FLT PNT, M3 X 10.0	70
	-	-	1	1	1	2119740-1	TAG, IDENTIFICATION	67
	-	-	2	2	2	2168078-1	SCREW, DRIVE, RH, RoHS, 2 x .188	66
	-	-	1	1	1	1901681-1	HOLDDOWN, TERMINAL	65
	-	-	1	1	1	2168083-2	SCR, SKT HD CAP, RoHS, M4 X 8.0	60
	-	-	-	1	-	5-18022-5	SCR, HEX HD CAP, M4 X 6.0	59
	-	-	-	1	-	2063961-1	FEED FINGER	58
	-	-	4	4	4	2168400-4	SHCS, LOW HEAD, RoHS, M4 X 8	57
	-	-	2	2	2	2168083-8	SCR, SKT HD CAP, RoHS, M4 X 16	56
	-	-	2	2	2	5018030-1	NUT, HEX, REG, RoHS, M3	54
	-	-	2	2	2	986965-8	NUT, LOCK, HEX, TORQUE (M4)	53
	-	-	1	1	1	1-5018030-0	NUT, HEX, REG, RoHS, M3.5	52
	-	-	1	-	-	2119792-1	PAWL, EF, AIR	51
△3	-	-	1	1	1	1-1752354-0	STANDOFF, HOLD-DOWN	50
	-	-	1	2	2	18023-9	SCR, SKT HD CAP M4 X 6.0	49
	-	-	-	1	-	2119652-1	FEED CAM, PRE FEED	48
	-	-	-	1	-	2119653-1	FEED CAM, POST FEED	47
	-	-	1	1	1	2119655-5	APPLICATOR BASIC ASSEMBLY, EF	46
	-	-	1	1	1	1803517-1	RAM ASSEMBLY, EF ATLANTIC	44
	-	-	1	1	1	1803602-1	SCR, BHSC, RoHS (M8 X 25)	41
	-	-	8	8	8	1-18028-2	WASHER, FLAT, REG M4	33
	-	-	2	2	2	2168083-9	SCR, SKT HD CAP, RoHS, M4 X 20	31
	-	-	2	2	2	1-2168083-0	SCR, SKT HD CAP, RoHS, M4 X 10	29
	-	-	1	1	1	240639-1	STRIPPER (MACHINING)	27
	-	-	2	2	2	1-2168083-5	SCR, SKT HD CAP, RoHS, M4 X 30	25
	-	-	1	1	1	1752371-5	PLATE, STRIP GUIDE	24
	-	-	2	2	2	4-22281-1	SPRING, COMPRESSION	22
	-	-	1	1	1	1803292-1	DRAG	20
	-	-	2	2	2	1901259-6	GUIDE, LOWER STRIP	18
	-	-	4	4	4	1-2079383-1	SCR, BHSC, RoHS (M6 X 12)	17
	-	-	1	1	1	1-240641-3	SPACER	16
	-	-	1	1	1	1752360-1	SPACER, HOLD-DOWN	13
△1	-	-	1	1	1	240644-1	PLATE, REAR SHEAR	11
	-	-	-	-	-	-	-	10
△1	-	-	1	1	1	690482-7	PLATE, FRONT SHEAR	9
△1	-	1	2	2	1	1803001-2	ANVIL, COMBINATION, END FEED	8
△1	-	-	1	1	1	240651-2	BLADE, SLUG	7
	-	-	1	1	1	4-240641-6	SPACER	5
	-	-	1	1	1	238011-2	BLOCK, CRIMPER SPACER	4
△1	-	1	2	2	1	3-2119582-4	CRIMPER, INSULATION F PREMIUM	3
	-	-	1	1	1	455888-7	SPACER, CRIMPER	2
△1	-	1	2	2	1	2-456406-3	CRIMPER, WIRE PREMIUM	1

DIMENSIONS:		TOLERANCES UNLESS OTHERWISE SPECIFIED:		MATERIAL:		FINISH:		WEIGHT:		SCALE:	
mm	0 PLC ±	1 PLC ±	2 PLC ±	3 PLC ±	4 PLC ±	ANGLES	FINISH				

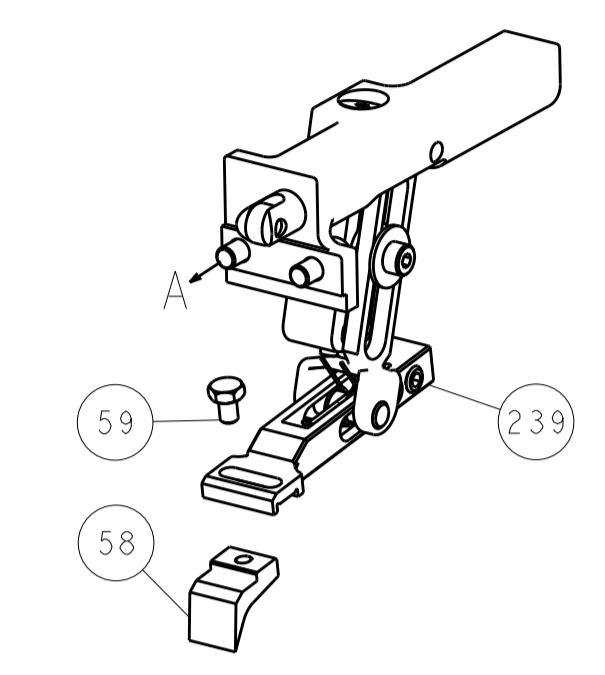
OWN	C. CHEN	Z0DEC2011	TE Connectivity
CHK	S. XI	Z0DEC2011	Harrisburg, PA 17105-3608
APVD	J. CRUZ	Z0DEC2011	
PRODUCT SPEC	Ocean End Feed Applicator		
APPLICATION SPEC	-		
SIZE	CAGE CODE	DRAWING NO	RESTRICTED TO
A1	00779	2150010	
CUSTOMER ACCESSIBLE PRODUCTION DRAWING			SCALE 1:1 SHEET 1 OF 4 REV B1

LOC		DIST		REVISIONS			
A	66	P	LTM	DESCRIPTION	DATE	DMN	APVD
		-	-	SEE SHEET 1	-	-	-

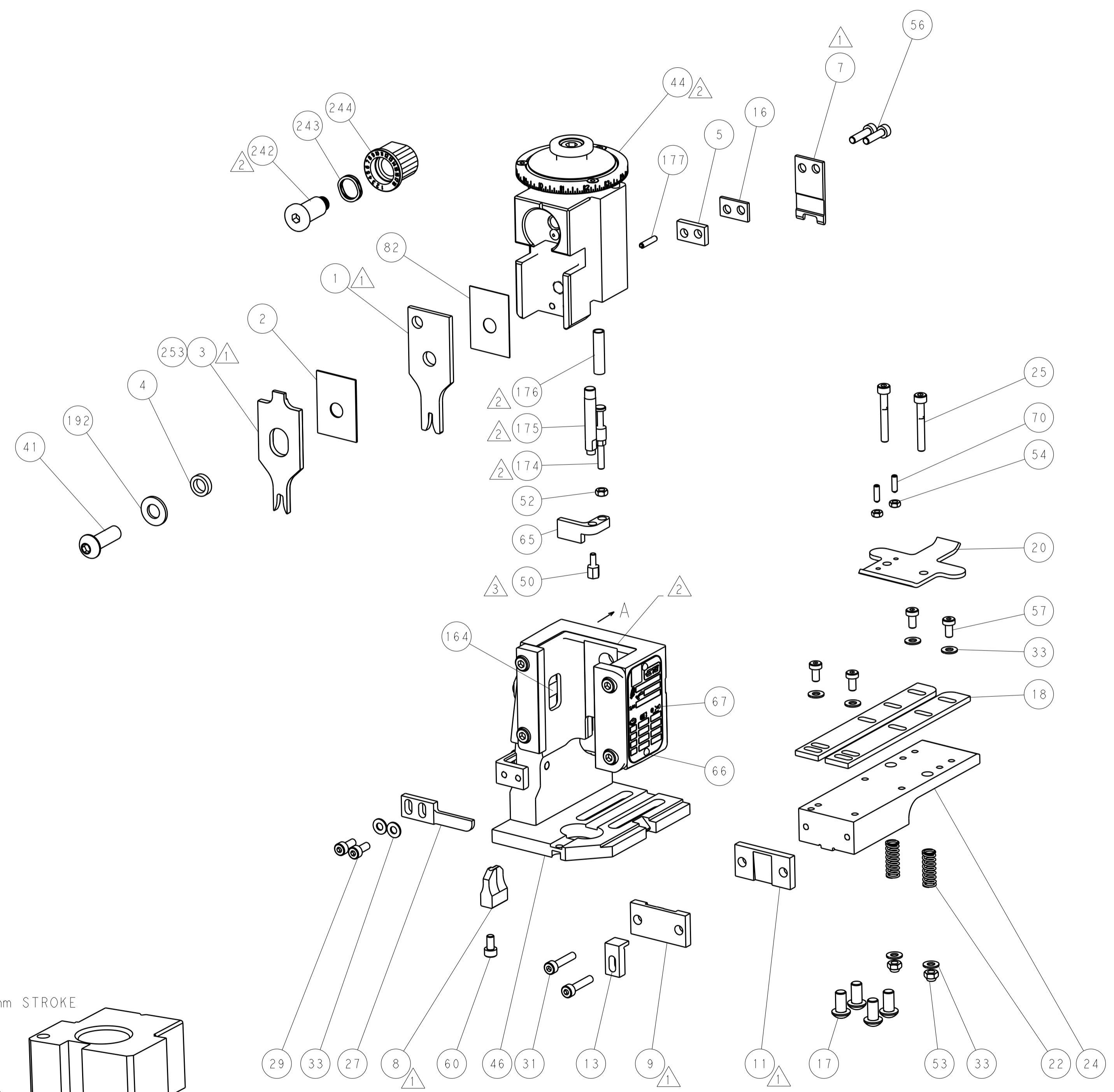
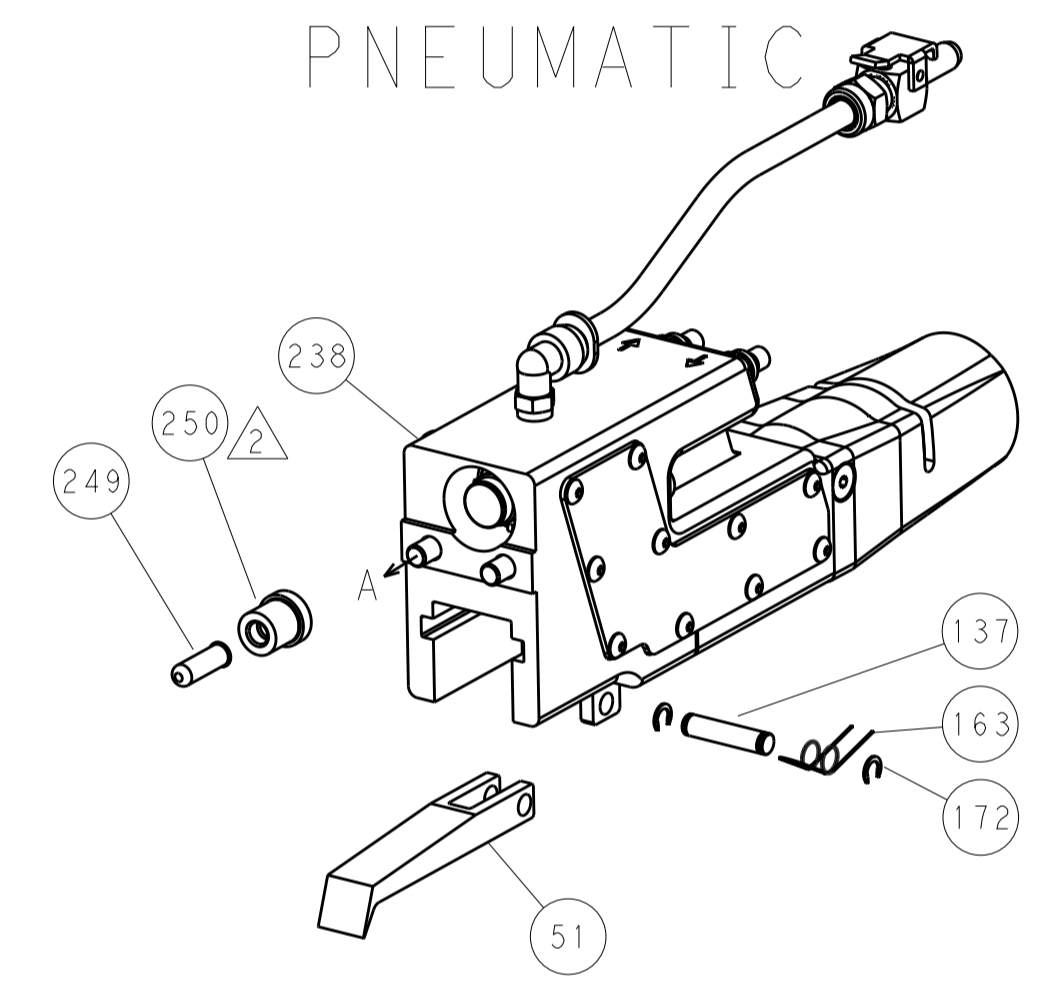


RAM AND HOLDDOWN SET-UP

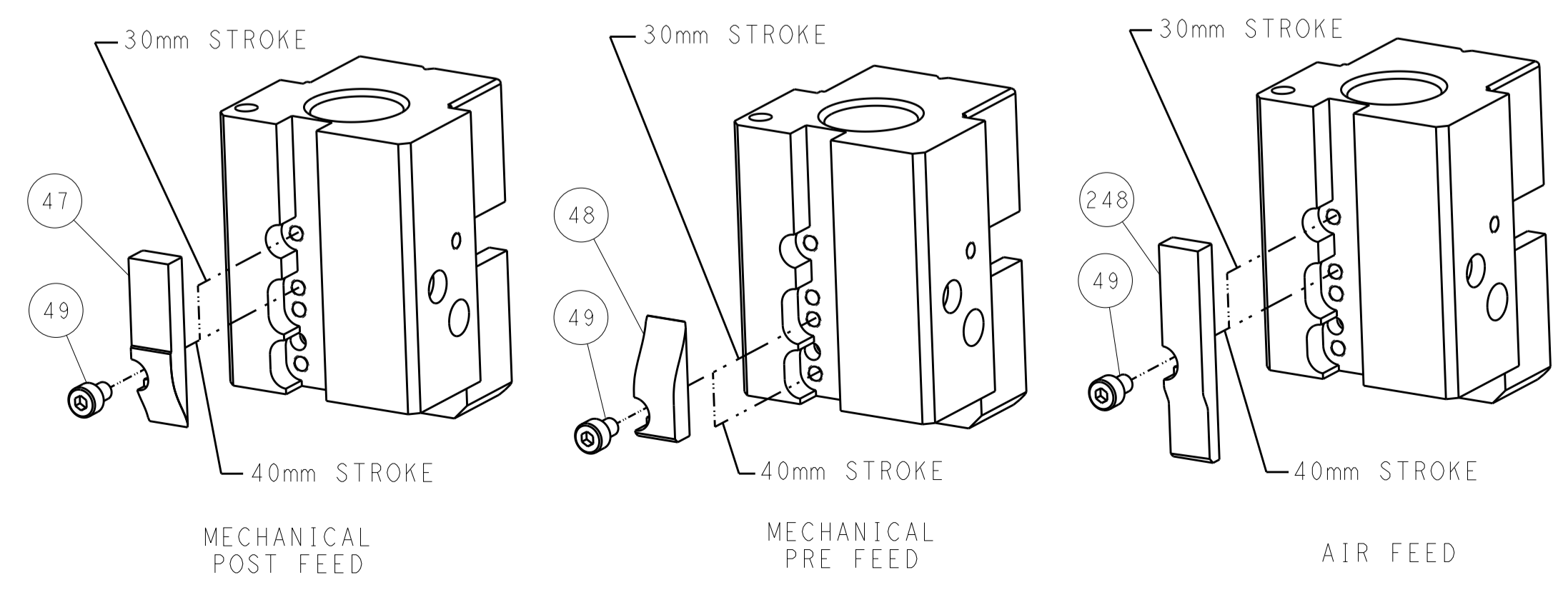
FEED TYPE
MECHANICAL



PNEUMATIC



CAM POSITIONS

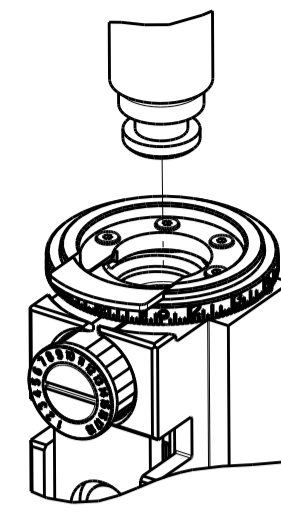


ATLANTIC VERSION
 Shown on sheets 1 of 4 & 2 of 4
 (Pacific version shown on sheets 3 of 4 & 4 of 4)

DIMENSIONS:		TOLERANCES UNLESS OTHERWISE SPECIFIED:		DWG: C.CHEN Z0DEC2011		TE Connectivity	
mm	0 PLC ±	1 PLC ±	2 PLC ±	3 PLC ±	4 PLC ±	5 PLC ±	Harrisburg, PA 17105-3608
	ANGLES			CHK: S.XI Z0DEC2011	NAME: Ocean End Feed Applicator		
MATERIAL:	FINISH:	APVD: J. CRUZ Z0DEC2011	PRODUCT SPEC:		SIZE: CAGE CODE: DRAWING NO:		RESTRICTED TO:
		WEIGHT:	APPLICATION SPEC:		A11 00779 ©=2150010		
CUSTOMER ACCESSIBLE PRODUCTION DRAWING				SCALE: 1:1	SHEET 2 OF 4	REV: B1	

PART NUMBER	REVISION	DESCRIPTION	FEED TYPE
2-2150010-1	B	FINE CRIMP HEIGHT ADJUST	MECHANICAL
2-2150010-2	B	FINE CRIMP HEIGHT ADJUST	PNEUMATIC
7-2150010-7	A	CRIMP TOOLING KIT	-
7-2150010-8	B	OVERLAP INSULATION CRIMPER	△

PACIFIC VERSION TERMINATOR INTERFACE ADAPTER

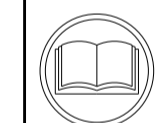


APPLICATOR DATA		
CRIMP	SIZE	TYPE
WIRE	2.29 mm (.090)	F
INSUL	4.06 mm (.160)	F
INSUL	4.06 mm (.160)	OV

APPL INSTRUCTIONS
408-35043

TERMINAL DATA: TE TERMINAL		TE CRIMP SPECIFICATION	
TERMINAL NAME: .140 DIA SHUR PLUG RECEPTACLE			
WIRE STRIP LENGTH		INSULATION DIAMETER RANGE	
3.80-4.60 mm (.150-.181 IN)		∅2.30-3.30 mm (.091-.130 IN)	
TERMINAL APPLICATION SPECIFICATION			
TERMINALS APPLIED			
TE TERMINAL	TE TERMINAL	TE TERMINAL	TE TERMINAL
626399-1	626399-2		

WIRE SIZE	CRIMP HEIGHT mm [INCH]	CRIMP HEIGHT REFERENCE SETTING
16 AWG	1.55+/-0.05 [.061+/-0.002]	9.2
18 AWG	1.40+/-0.05 [.055+/-0.002]	10.6
20 AWG	1.29+/-0.05 [.051+/-0.002]	11.6



- △ RECOMMENDED SPARE PARTS
- △ REFER TO SUPPLIED INSTRUCTION SHEET FOR CLEANING, LUBRICATION AND STORAGE OF APPLICATOR.
- △ APPLY PART NUMBER 1-23419-5 LOCTITE TO THREADS OF ITEM 50. APPLY PART NUMBER 2-23419-6 LOCTITE TO THREADS OF ITEM 242.
- △ CRIMP HEIGHT REFERENCE SETTING WAS THE SETTING USED WHEN THE APPLICATOR WAS QUALIFIED AT THE FACTORY. ADJUSTMENT MAY BE NECESSARY WHEN RUNNING APPLICATOR IN THE FIELD.

5. UNLESS SPECIFIED OTHERWISE TORQUE VALUES SHALL BE USED PER DOCUMENT, 101-35000.

△ FOR CASES THAT IT NEED TO USE WIRES AS DIN 72551-6 OR AVS(INSUL. ∅1.6MM-2.7MM) IT IS RECOMMENDED TO USE THE INSULATION CRIMPER OV, PN:5-1803221-5.

***WARNING**
ON INSTALLATION, SET WIRE DISC TO CRIMP HEIGHT REFERENCE SETTING FOR LARGEST WIRE SIZE. CRIMP HEIGHT REFERENCE SETTINGS GREATER THAN THE VALUE SHOWN MAY CAUSE DAMAGE TO THE CRIMP TOOLING, REFER TO THE INSTRUCTION SHEET FOR PROPER SETUP AND ADJUSTMENTS.

LOC	DIST	REVISIONS					
A	66	P	LTN	DESCRIPTION	DATE	OWN	APVD
		-	-	SEE SHEET 1			

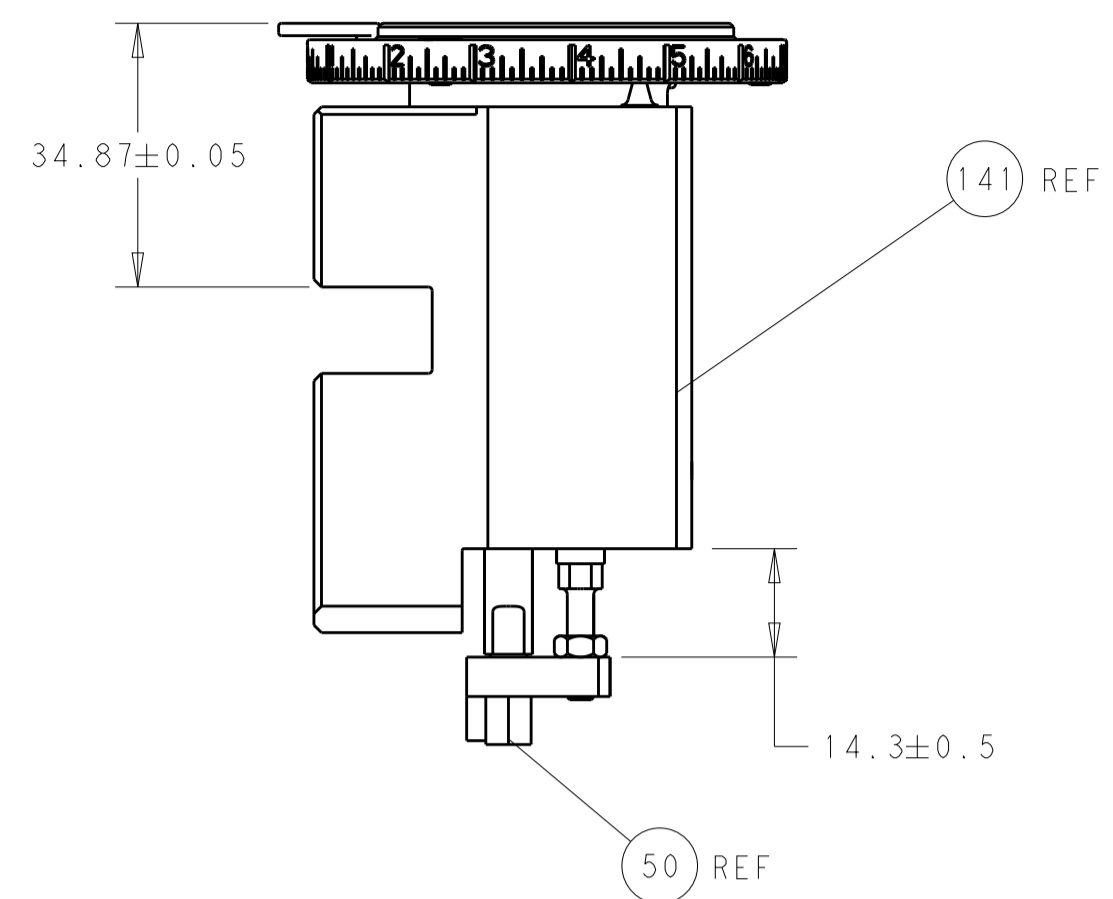
△6	1	-	-	5-1803221-5	CRIMPER, INSULATION OVERLAP PREMIUM	253
-	-	1	-	2119640-1	PUSH ROD, AIR FEED	250
-	-	1	-	2079988-1	BUSHING, LCH5-12, MISUMI	249
-	-	1	1	2119082-9	CAM, SNAIL, INSULATION ADJUSTMENT	244
-	-	1	1	2079764-1	WASHER, WAVE SPRING, CREST-TO-CREST	243
△3	-	-	1	2119083-1	RETAINER, INSULATION DIAL	242
-	-	-	1	2119580-1	MECHANICAL FEED ASSEMBLY	239
-	-	1	-	2063440-1	AIR FEED MODULE	238
-	-	1	1	1-18028-0	WASHER, FLAT, REG M8	192
-	-	4	4	2079383-9	SCR, BHSC, RoHS (M6 X 20)	186
-	-	1	1	6-993111-6	PIN, SLOTTED SPRING 3.0 X 14.0	177
-	-	1	1	8-22280-7	SPRING, COMPRESSION	176
-	-	1	1	1752353-2	GUIDE PIN,HOLDDOWN	175
-	-	1	1	1901680-2	GUIDE PIN,HOLDDOWN	174
-	-	2	-	21045-3	RING, RETAIN, EXTERN, 3/16 CRESCENT	172
-	-	REFREF	-	994970-2	COUNTER, MAGNETIC	164
-	-	1	-	240638-1	SPRING, FEED FINGER	163
-	-	1	-	2119641-2	FEED CAM, AIR FEED	152
-	-	1	1	2168083-8	SCR, SKT HD CAP, RoHS, M4 X 16	144
-	-	-	1	2119653-2	FEED CAM, POST FEED	142
-	-	1	1	2119655-6	APPLICATOR BASIC ASSEMBLY, EF	141
-	-	1	1	1803518-1	RAM ASSEMBLY, EF PACIFIC	140
-	-	1	-	3-23627-7	PIN, RETAIN, GRVD, 3/16 X .854	137
-	-	1	1	455888-3	SPACER, CRIMPER	82
-	-	1	1	1803607-2	DOCUMENTATION PACKAGE	71
-	-	2	2	2-18032-2	SCR, SET, FLT PNT, M3 X 10.0	70
-	-	1	1	2119740-1	TAG,IDENTIFICATION	67
-	-	2	2	2168078-1	SCREW, DRIVE, RH, RoHS, 2 x .188	66
-	-	1	1	1901681-1	HOLDDOWN, TERMINAL	65
-	-	-	1	5-18022-5	SCR, HEX HD CAP, M4 X 6.0	59
-	-	-	1	2063961-1	FEED FINGER	58
-	-	4	4	2168400-4	SHCS, LOW HEAD, RoHS, M4 X 8	57
-	-	2	2	2168083-8	SCR, SKT HD CAP, RoHS, M4 X 16	56
-	-	2	2	5018030-1	NUT, HEX, REG, RoHS, M3	54
-	-	2	2	986965-8	NUT, LOCK, HEX, TORQUE (M4)	53
-	-	1	1	1-5018030-0	NUT, HEX, REG, RoHS, M3.5	52
-	-	1	-	2119792-1	PAWL, EF, AIR	51
△3	-	-	1	1-1752354-0	STANDOFF,HOLD-DOWN	50
-	-	1	2	18023-9	SCR, SKT HD CAP M4 X 6.0	49
-	-	-	1	2119652-1	FEED CAM, PRE FEED	48
-	-	1	1	1803602-1	SCR, BHSC, RoHS (M8 X 25)	41
-	-	8	8	1-18028-2	WASHER, FLAT, REG M4	33
-	-	2	2	2168083-9	SCR, SKT HD CAP, RoHS, M4 X 20	31
-	-	2	2	1-2168083-0	SCR, SKT HD CAP, RoHS, M4 X 10	29
-	-	1	1	240639-1	STRIPPER (MACHINING)	27
-	-	2	2	1-2168083-5	SCR, SKT HD CAP, RoHS, M4 X 30	25
-	-	1	1	1752371-5	PLATE, STRIP GUIDE	24
-	-	2	2	4-22281-1	SPRING, COMPRESSION	22
-	-	1	1	1803292-1	DRAG	20
-	-	2	2	1901259-6	GUIDE, LOWER STRIP	18
-	-	1	1	1-240641-3	SPACER	16
-	-	1	1	1752360-1	SPACER,HOLD-DOWN	13
△1	-	1	1	240644-1	PLATE, REAR SHEAR	11
-	-	-	-	-	-	10
△1	-	1	1	690482-7	PLATE, FRONT SHEAR	9
△1	-	1	1	1803001-2	ANVIL, COMBINATION, END FEED	8
△1	-	1	1	240651-2	BLADE, SLUG	7
-	-	1	1	4-240641-6	SPACER	5
-	-	1	1	238011-2	BLOCK, CRIMPER SPACER	4
△1	-	1	1	3-2119582-4	CRIMPER, INSULATION F PREMIUM	3
-	-	1	1	455888-7	SPACER, CRIMPER	2
△1	-	1	1	2-456406-3	CRIMPER, WIRE PREMIUM	1

PACIFIC VERSION
Shown on sheets 3 of 4 & 4 of 4
(Atlantic version shown on sheets 1 of 4 & 2 of 4)

DIMENSIONS:		TOLERANCES UNLESS OTHERWISE SPECIFIED:		DRAWING NO	
mm	0 PLC ±	1 PLC ±	2 PLC ±	3 PLC ±	4 PLC ±
	ANGLES	FINISH			

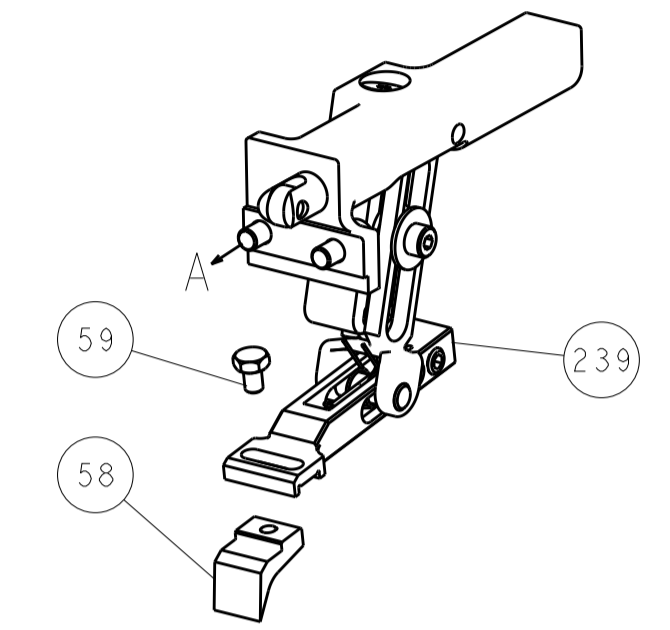
OWN	C. CHEN	ZODEC2011
CHK	S. XI	ZODEC2011
APVD	J. CRUZ	ZODEC2011
NAME	Ocean End Feed Applicator	
PRODUCT SPEC		
APPLICATION SPEC		
SIZE	CAGE CODE	DRAWING NO
A1	00779	2150010
CUSTOMER ACCESSIBLE PRODUCTION DRAWING		
SCALE	1:1	SHEET 3 OF 4

LOC	DIST	REV	DATE	BY	APPV
A	66				
REVISIONS			DATE	BY	APPV
- SEE SHEET 1			-	-	-

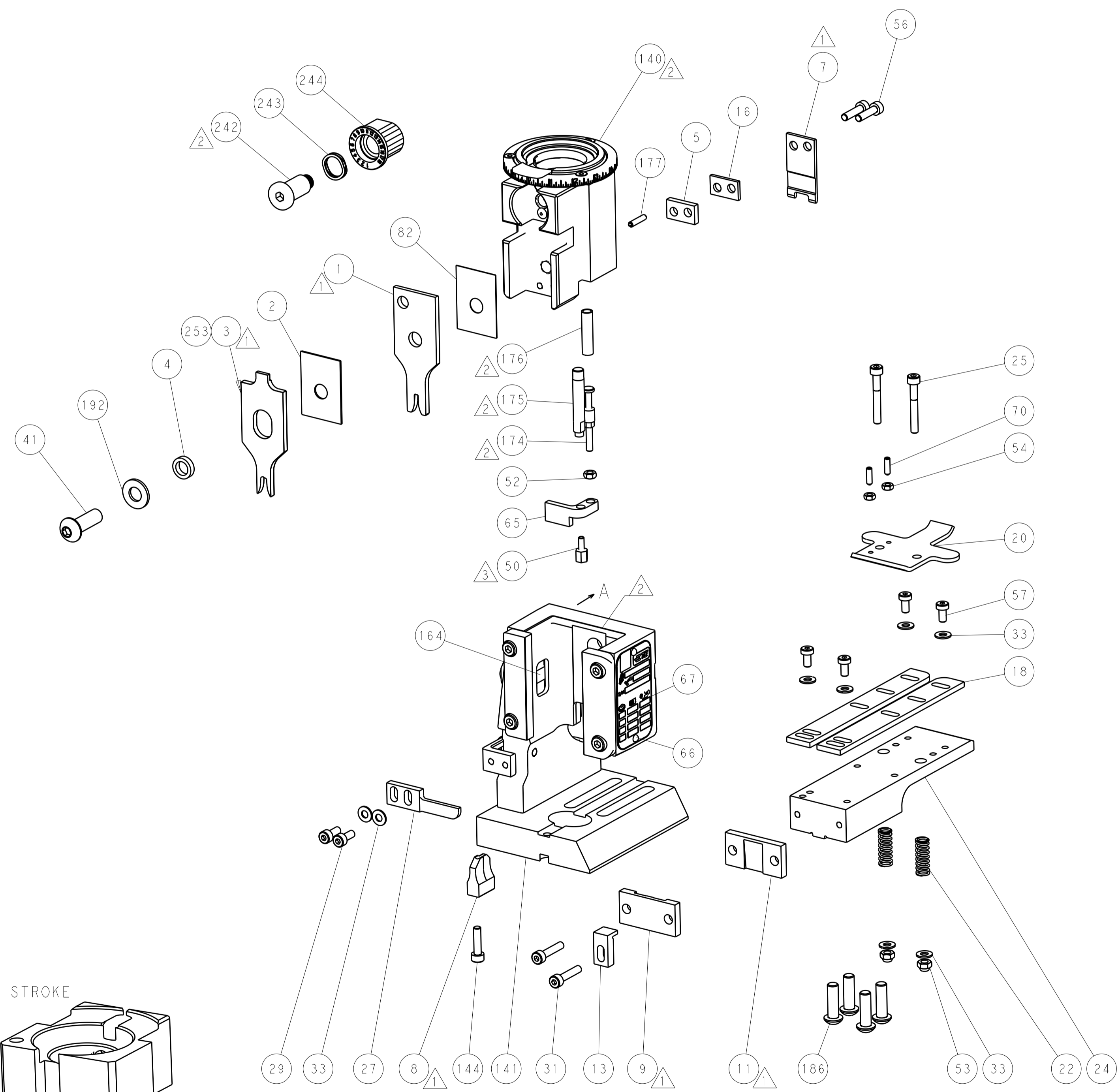
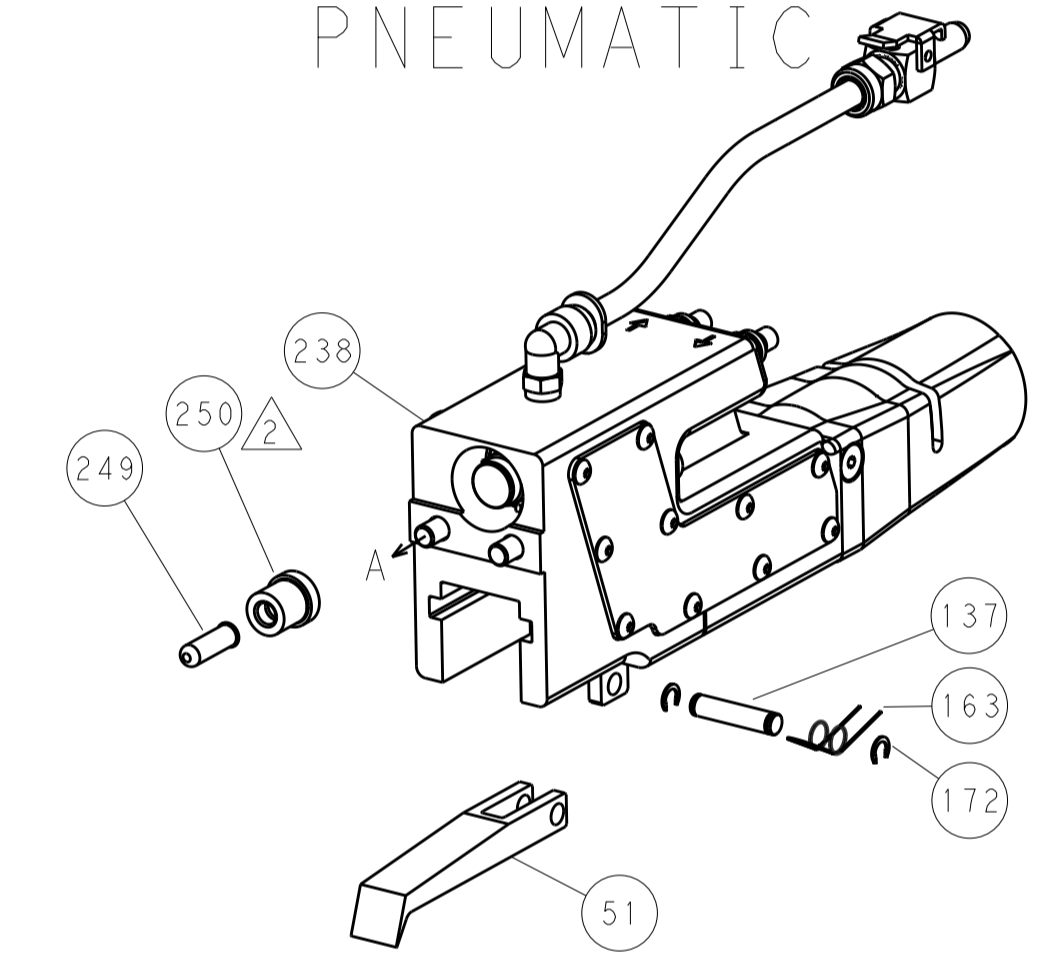


RAM AND HOLDDOWN SET-UP

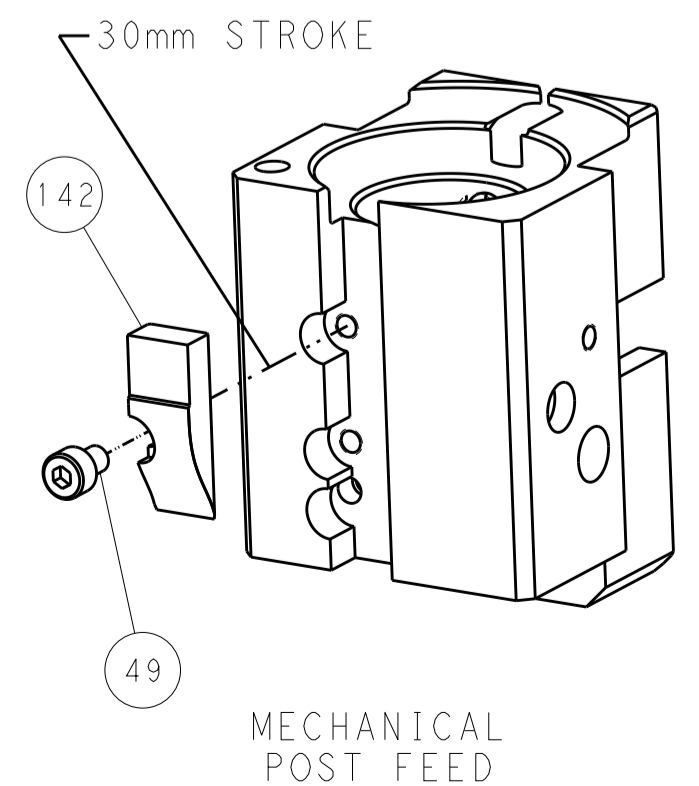
FEED TYPE
MECHANICAL



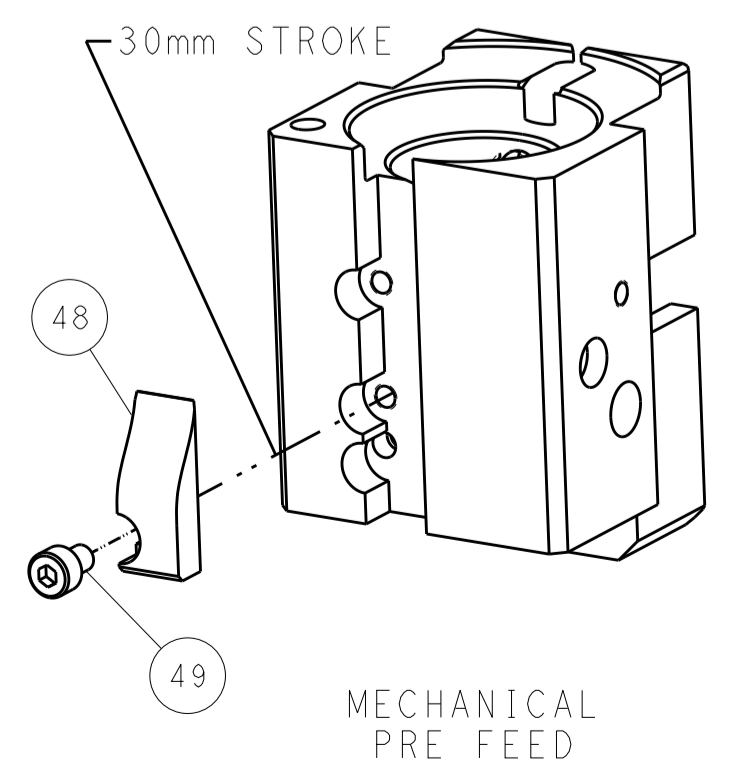
PNEUMATIC



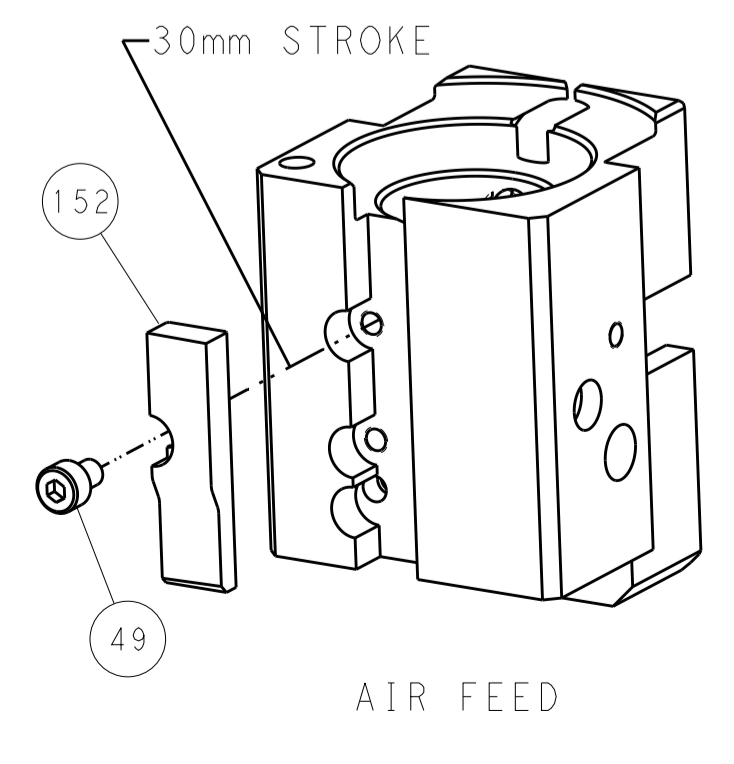
CAM POSITIONS



MECHANICAL POST FEED



MECHANICAL PRE FEED



AIR FEED

PACIFIC VERSION
 Shown on sheets 3 of 4 & 4 of 4
 (Atlantic version shown on sheets 1 of 4 & 2 of 4)

DIMENSIONS: mm 		TOLERANCES UNLESS OTHERWISE SPECIFIED: 0 PLC ± 1 PLC ± 2 PLC ± 3 PLC ± 4 PLC ± ANGLES ±		DWN C. CHEN Z0DEC2011 CHK S. XI Z0DEC2011 APVD J. CRUZ Z0DEC2011		NAME Ocean End Feed Applier	
MATERIAL:		FINISH:		WEIGHT:		SIZE CAGE CODE DRAWING NO A1 00779 C=2150010	
CUSTOMER ACCESSIBLE PRODUCTION DRAWING				SCALE 1:1		SHEET 4 OF 4 REV B1	