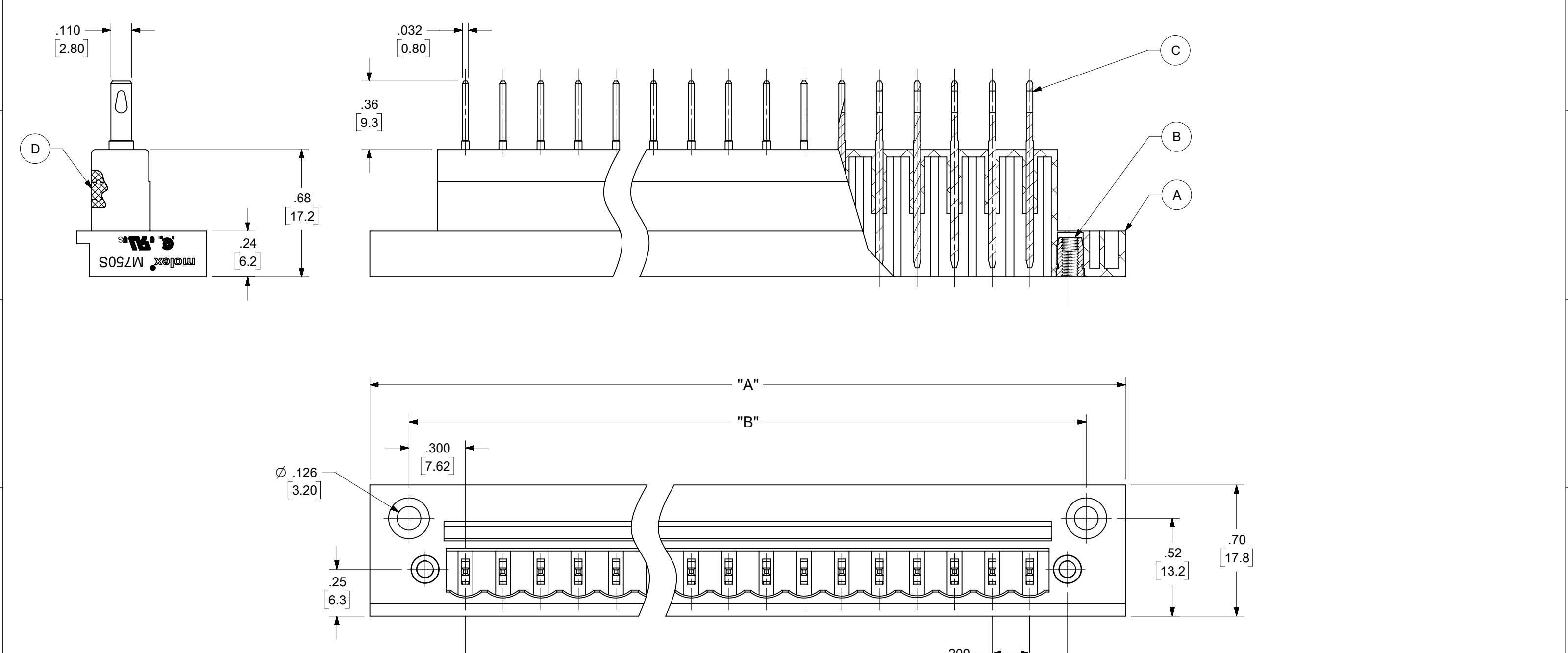


10 9 8 7 6 5 4 3 2 1



SPECIFICATIONS:

1. MATERIAL:
 - (A). BODY: PA66, UL94V-0
 - (B). NUT INSERT: M2.5, BRASS
 - (C). CONTACT: BRASS, TIN PLATED
 - (D). STOP PIN: PA66, UL94V-0
2. ELECTRICAL RATING: 15A AT 51-150V, 10A AT 151-300V
3. DIELECTRIC WITHSTAND: AC 2500V FOR 1 MINUTE
4. INSULATION RESISTANCE: DC 500V, 500M Ω
5. BREAKDOWN VOLTAGE: 4000V
6. OPERATING TEMPERATURE: -40°C TO 105°C
7. DIMS SHOWN ARE FOR REFERENCE ONLY

TOLERANCES			
MM	TOL	INCH	TOL
0-6	±0.25	0-.24	±.010
>6-30	±0.40	.24-1.18	±.016
>30-120	±0.50	1.18-4.76	±.020
>120	±0.80	>4.76	±.031

THIS DRAWING CONTAINS INFORMATION THAT IS PROPRIETARY TO MOLEX ELECTRONIC TECHNOLOGIES, LLC AND SHOULD NOT BE USED WITHOUT WRITTEN PERMISSION			
SYMBOLS DIMENSION UNITS: INCH/MM SCALE: 2:1		CURRENT REV DESC: ADDED BLACK PART NUMBERS	
GENERAL TOLERANCES (UNLESS SPECIFIED)		EC NO: 627826	
4 PLACES ± --- ± --- 3 PLACES ± --- ± SEE CHART 2 PLACES ± SEE CHART ± SEE CHART 1 PLACE ± SEE CHART ± --- 0 PLACES ± --- ± ---		DRWN: ABENJAMINLW 2019/08/05 CHK'D: DACHAMMER 2019/11/21 APPR: JFMURPHY 2020/01/06	
ANGULAR TOL ± ---		INITIAL REVISION: DRWN: TWOLDEGE 2011/03/17 APPR: JFMURPHY 2011/04/11	
DRAFT WHERE APPLICABLE MUST REMAIN WITHIN DIMENSIONS		THIRD ANGLE PROJECTION	DRAWING: B-SIZE
DOCUMENT STATUS: P1 RELEASE DATE: 2020/01/06 17:26:59		SERIES: 39531	MATERIAL NUMBER: SEE SHEET-2 CUSTOMER: GENERAL MARKET SHEET NUMBER: 1 OF 2

molex

RECEPTACLE, PANEL MOUNT
5.08MM PITCH

PRODUCT CUSTOMER DRAWING

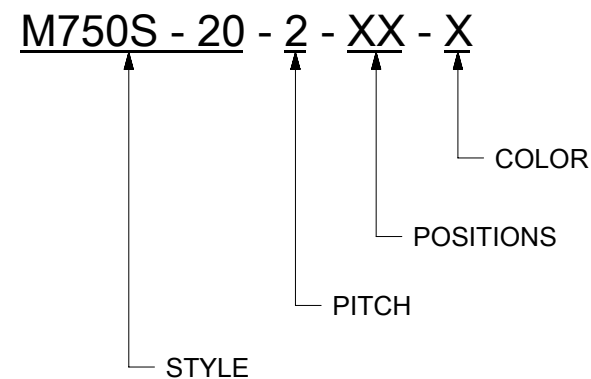
DOCUMENT NUMBER	DOC TYPE	DOC PART	REVISION
SD-39531-004	PSD	001	B3

10 9 8 7 6 5 4 3 2 1

DESCRIPTION	CIRCUIT SIZE	MATERIAL NUMBERS				DIMENSIONAL INFORMATION					
		BLACK COLOR		GREEN COLOR		DIM. "A"		DIM. "B"		DIM. "C"	
		MATERIAL NO.	ENGINEERING NO.	MATERIAL NO.	ENGINEERING NO.	inch	mm	inch	mm	inch	mm
5.08 MM, EURO HEADER, VERTICAL	2	395312002	M750S-20-2-02-1	395313002	M750S-20-2-02-3	1.20	30.5	0.800	20.32	0.200	5.08
5.08 MM, EURO HEADER, VERTICAL	3	395312003	M750S-20-2-03-1		M750S-20-2-03-3	1.40	35.6	1.000	25.40	0.400	10.16
5.08 MM, EURO HEADER, VERTICAL	4	395312004	M750S-20-2-04-1		M750S-20-2-04-3	1.60	40.6	1.200	30.48	0.600	15.24
5.08 MM, EURO HEADER, VERTICAL	5	395312005	M750S-20-2-05-1		M750S-20-2-05-3	1.80	45.7	1.400	35.56	0.800	20.32
5.08 MM, EURO HEADER, VERTICAL	6	395312006	M750S-20-2-06-1		M750S-20-2-06-3	2.00	50.8	1.600	40.64	1.000	25.40
5.08 MM, EURO HEADER, VERTICAL	7	395312007	M750S-20-2-07-1		M750S-20-2-07-3	2.20	55.9	1.800	45.72	1.200	30.48
5.08 MM, EURO HEADER, VERTICAL	8	395312008	M750S-20-2-08-1		M750S-20-2-08-3	2.40	61.0	2.000	50.80	1.400	35.56
5.08 MM, EURO HEADER, VERTICAL	9	395312009	M750S-20-2-09-1		M750S-20-2-09-3	2.60	66.0	2.200	55.88	1.600	40.64
5.08 MM, EURO HEADER, VERTICAL	10	395312010	M750S-20-2-10-1		M750S-20-2-10-3	2.80	71.1	2.400	60.96	1.800	45.72
5.08 MM, EURO HEADER, VERTICAL	11	395312011	M750S-20-2-11-1		M750S-20-2-11-3	3.00	76.2	2.600	66.04	2.000	50.80
5.08 MM, EURO HEADER, VERTICAL	12	395312012	M750S-20-2-12-1		M750S-20-2-12-3	3.20	81.3	2.800	71.12	2.200	55.88
5.08 MM, EURO HEADER, VERTICAL	13	395312013	M750S-20-2-13-1		M750S-20-2-13-3	3.40	86.4	3.000	76.20	2.400	60.96
5.08 MM, EURO HEADER, VERTICAL	14	395312014	M750S-20-2-14-1		M750S-20-2-14-3	3.60	91.4	3.200	81.28	2.600	66.04
5.08 MM, EURO HEADER, VERTICAL	15	395312015	M750S-20-2-15-1		M750S-20-2-15-3	3.80	96.5	3.400	86.36	2.800	71.12
5.08 MM, EURO HEADER, VERTICAL	16	395312016	M750S-20-2-16-1	395313016	M750S-20-2-16-3	4.00	101.6	3.600	91.44	3.000	76.20

REF. LAST 2 DIGITS OF PART NUMBER EQUAL NUMBER OF POLES

ENGINEERING NUMBER LEGEND



TOLERANCES			
MM	TOL	INCH	TOL
0-6	±0.25	0-.24	±.010
>6-30	±0.40	.24-1.18	±.016
>30-120	±0.50	1.18-4.76	±.020
>120	±0.80	>4.76	±.031

SYMBOLS	THIS DRAWING CONTAINS INFORMATION THAT IS PROPRIETARY TO MOLEX ELECTRONIC TECHNOLOGIES, LLC AND SHOULD NOT BE USED WITHOUT WRITTEN PERMISSION	
	DIMENSION UNITS	SCALE
▽ = 0	INCH/MM	2:1
▽ = 0	GENERAL TOLERANCES (UNLESS SPECIFIED)	
▽ = 0	MM	INCH
▽ = 0	4 PLACES ± --- ± ---	EC NO: 627826
▽ = 0	3 PLACES ± --- ± SEE CHART	DRWN: ABENJAMINLW 2019/08/05
▽ = 0	2 PLACES ± SEE CHART ± SEE CHART	CHK'D: DACHAMMER 2019/11/21
▽ = 0	1 PLACE ± SEE CHART ± ---	APPR: JFMURPHY 2020/01/06
▽ = 0	0 PLACES ± --- ± ---	INITIAL REVISION:
▽ = 0	ANGULAR TOL ± ---	DRWN: TWOLDEGE 2011/03/17
▽ = 0	DRAFT WHERE APPLICABLE MUST REMAIN WITHIN DIMENSIONS	APPR: JFMURPHY 2011/04/11
▽ = 0	THIRD ANGLE PROJECTION	DRAWING
▽ = 0	DRWNG	SERIES
▽ = 0	B-SIZE	39531
DOCUMENT NUMBER		DOC TYPE
SD-39531-004		PSD
DOC PART		REVISION
001		B3
MATERIAL NUMBER		CUSTOMER
SEE TABLE		GENERAL MARKET
SHEET NUMBER		
2 OF 2		