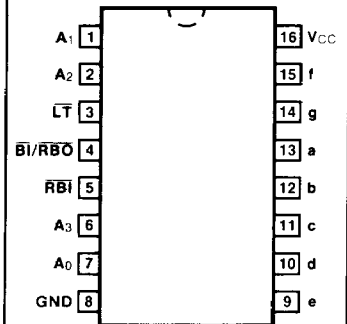


6341651r

## 54LS/74LS249 ✓

### BCD TO 7-SEGMENT DECODER (With Open-Collector Outputs)

#### CONNECTION DIAGRAM PINOUT A

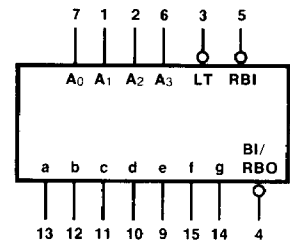


**DESCRIPTION** — The 'LS249 has active HIGH open-collector outputs and is the 16-pin version of the 14-pin 'LS49. The 'LS249 incorporates the Lamp Test and  $\overline{\text{BI/RBO}}$  inputs that are omitted in the 'LS49. Additionally, the 'LS249 will light the top bar (segment a) for numeral 6 and the bottom bar (segment d) for numeral 9. For detailed description and specifications please refer to the 'LS49 data sheet.

**ORDERING CODE:** See Section 9

PKGS	PIN OUT	COMMERCIAL GRADE	MILITARY GRADE	PKG TYPE
		$V_{CC} = +5.0 \text{ V} \pm 5\%$ , $T_A = 0^\circ \text{C to } +70^\circ \text{C}$	$V_{CC} = +5.0 \text{ V} \pm 10\%$ , $T_A = -55^\circ \text{C to } +125^\circ \text{C}$	
Plastic DIP (P)	A	74LS249PC		9B
Ceramic DIP (D)	A	74LS249DC	54LS249DM	6B
Flatpak (F)	A	74LS249FC	54LS249FM	4L

#### LOGIC SYMBOL



$V_{CC} = \text{Pin } 16$   
 $\text{GND} = \text{Pin } 8$

**INPUT LOADING/FAN-OUT:** See Section 3 for U.L. definitions

PIN NAMES	DESCRIPTION	54/74LS (U.L.) HIGH/LOW
$A_0 - A_3$	BCD Inputs	0.5/0.25
$\overline{\text{BI}}$	Blanking Input (Active LOW)	0.5/0.25
$\overline{\text{LT}}$	Lamp Test Input (Active LOW)	0.5/0.25
$\overline{\text{BI/RBO}}$	Blanking Input (Active LOW) or Ripple Blanking Output (Active LOW)	0.5/0.25 1.25/2.0 (1.0)
a—g	Segment Outputs (Active HIGH)	OC*/5.0 (2.5)

\*OC— Open Collector