

## IP65 Panel Seal Indicator with Legend

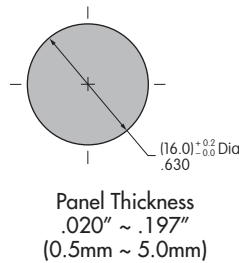
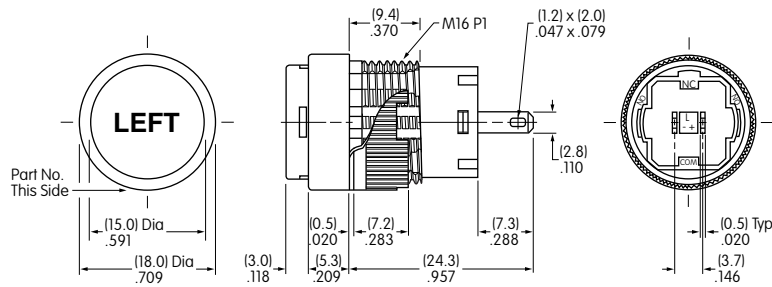
### YB02VA004

Bushing Mounting • Splashproof

Dimensions in mm/inch

#### PANEL CUTOUT

#### LEGEND SPECIFICATIONS



<b>Legend</b>	LEFT
<b>Type Style</b>	Helvetica Bold
<b>Type Size</b>	10 Point
<b>Legend Color</b>	Black
<b>Print Method</b>	Laser Etch on Inside of Lens

Legend shown is illustrative only. Actual art may vary.

#### BASE INDICATOR

#### ROUND CAP

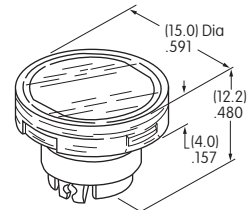
AT3005JB  
Round Cap

Part Number

YB02WKW01

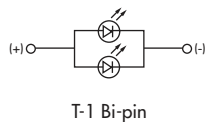
Clear Lens  
White Insert

Materials: Polycarbonate (Lens & Insert)  
Thermoplastic Elastomer (Seal/Diffuser)  
Finish: Glossy



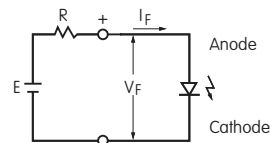
#### ELECTRICAL SPECIFICATIONS FOR LED

Bright LED  
AT628C



LED does not come with a resistor		
Color	Red	
Maximum Forward Current	$I_{FM}$	40mA
Typical Forward Current	$I_F$	26mA
Forward Voltage	$V_F$	1.9V
Maximum Reverse Voltage	$V_{RM}$	4V
Current Reduction Rate Above 25°C	$\Delta I_F$	0.50mA/°C
Ambient Temperature Range		-25°C ~ +50°C

The electrical specifications shown are determined at a basic temperature of 25°C. If the source voltage exceeds the rated voltage, a ballast resistor is required. The following diagram and formula will assist in calculating the value of the ballast resistor.



$$R = \frac{E - V_F}{I_F}$$

Where: R = Resistor Value (Ohms)  
E = Source Voltage (V)  
 $V_F$  = Forward Voltage (V)  
 $I_F$  = Forward Current (A)

## Base Indicator Specifications

### Materials & Finishes

<b>Housing/Bezel:</b>	Glass fiber reinforced polyamide (UL94V-0)
<b>Base:</b>	Glass fiber reinforced polyamide (UL94V-0)
<b>Lamp Terminals:</b>	Phosphor bronze with tin plating

### Environmental Data

<b>Operating Temperature Range:</b>	-25°C through +50°C (-13°F through +122°F)
<b>Humidity:</b>	90 ~ 95% humidity for 96 hours @ 40°C (104°F)
<b>Vibration:</b>	10 ~ 55Hz with peak-to-peak amplitude of 1.5mm traversing the frequency range & returning in 1 minute; 3 right angled directions for 2 hours
<b>Shock:</b>	50G (490m/s <sup>2</sup> ) acceleration (tested in 6 right angled directions, with 5 shocks in each direction)
<b>Sealing:</b>	IP65 of IEC60529 standard for panel seal models

RoHS Compliant:



### Installation

<b>Mounting Torque:</b>	0.785Nm (6.95 lb•in) maximum
<b>Quick Connect Force:</b>	24.5N maximum downward force on connector
<b>Soldering Time &amp; Temperature:</b>	Manual Soldering: 390°C for 4 seconds, 2 cycles

### Standards & Certifications

<b>Flammability Standards:</b>	UL94-0 housing & base
--------------------------------	-----------------------