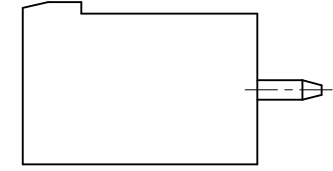
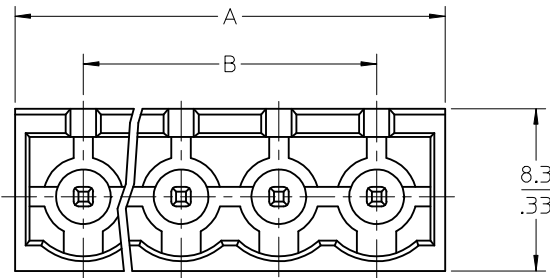
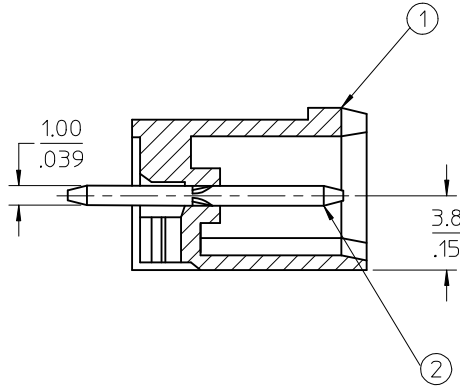
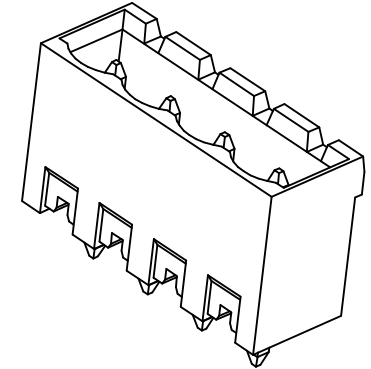
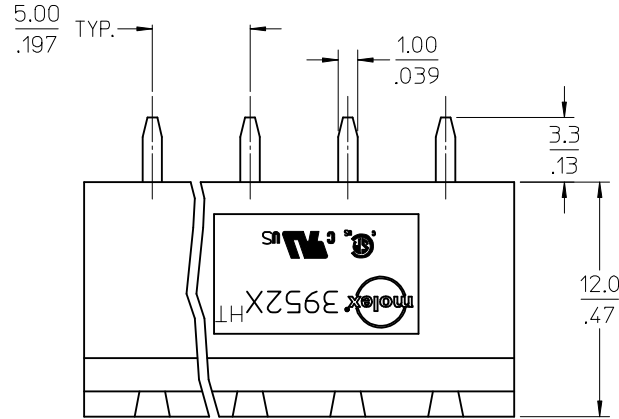


CIRCUIT SIZE	MATERIAL NO.	Dimensional Information				PACKAGING SPECIFICATION
	Black	DIM. "A"		DIM. "B"		
	100% Tin	mm	in	mm	in	
03	395290026	17.0	0.67	10.00	0.39	PK-39529-001
04	395290027	22.0	0.87	15.00	0.59	PK-39529-002



TOLERANCES			
MM	TOL	INCH	TOL
0-6	±0.25	0-.24	±.010
>6-30	±0.40	.24-1.18	±.016
>30-120	±0.50	1.18-4.76	±.020
>120	±0.80	>4.76	±.031

**SPECIFICATIONS:**

- MATERIAL:  
(1). BODY: NYLON 46 (PA 46).  
(2). PIN: BRASS.
- PRODUCT SPECIFICATION: PS-39500-001.
- PACKAGING SPECIFICATION: SEE TABLE.
- ASSEMBLY IS ROHS COMPLIANT.

REVISED DOC TOL EC NO: IFC2017-0881 DRAWN: CRADDOREMS 2017/03/23 CHKD: APPR: BRUPERT 2017/04/18 A1	QUALITY SYMBOLS ▽=0 ▽7=0	GENERAL TOLERANCES (UNLESS SPECIFIED) <table border="1"> <thead> <tr> <th></th> <th>mm</th> <th>INCH</th> </tr> </thead> <tbody> <tr> <td>4 PLACES</td> <td>±---</td> <td>±---</td> </tr> <tr> <td>3 PLACES</td> <td>±---</td> <td>±---</td> </tr> <tr> <td>2 PLACES</td> <td>±---</td> <td>±---</td> </tr> <tr> <td>1 PLACE</td> <td>±---</td> <td>±---</td> </tr> <tr> <td colspan="3">ANGULAR ±---°</td> </tr> </tbody> </table>		mm	INCH	4 PLACES	±---	±---	3 PLACES	±---	±---	2 PLACES	±---	±---	1 PLACE	±---	±---	ANGULAR ±---°			DIMENSION STYLE MM/IN DRAWN BY: C. YORK DATE: 2009/06/24 CHECKED BY: D. TITUS DATE: 2009/06/24 APPROVED BY: D. TITUS DATE: 2009/06/24 MATERIAL NO.	SCALE: INCH DESIGN UNITS: INCH THIRD ANGLE PROJECTION	TITLE: 5.00/.197 EURO HEADER, VERTICAL, HIGH TEMP
		mm	INCH																				
	4 PLACES	±---	±---																				
	3 PLACES	±---	±---																				
2 PLACES	±---	±---																					
1 PLACE	±---	±---																					
ANGULAR ±---°																							
DRAFT WHERE APPLICABLE MUST REMAIN WITHIN DIMENSIONS		SEE CHART		MOLEX INCORPORATED DOCUMENT NO. SD-39529-003	SHEET NO. 1 OF 1																		
THIS DRAWING CONTAINS INFORMATION THAT IS PROPRIETARY TO MOLEX INCORPORATED AND SHOULD NOT BE USED WITHOUT WRITTEN PERMISSION																							