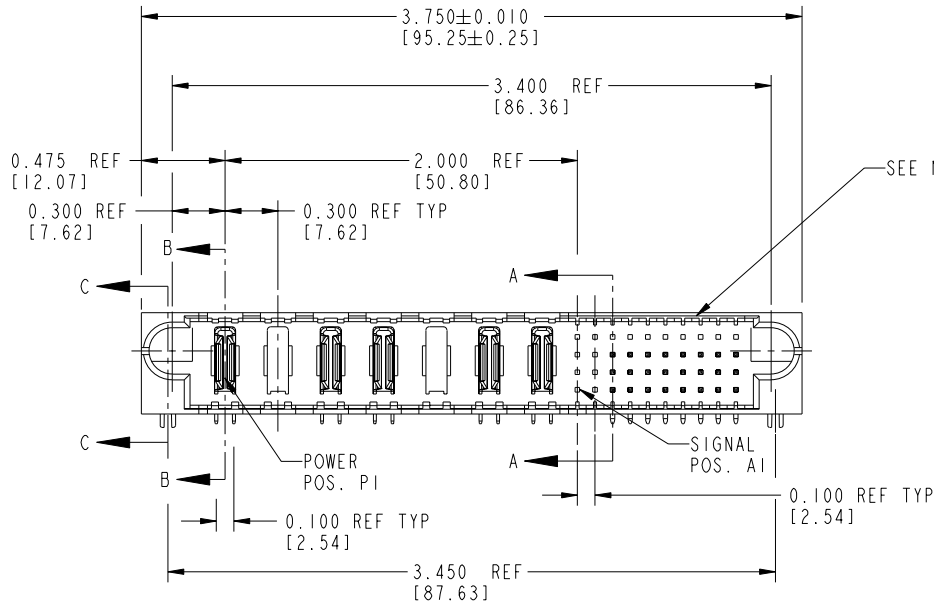
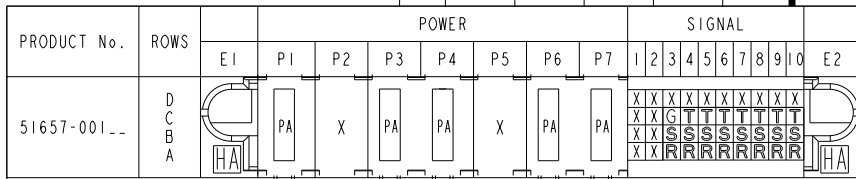


Tous droits strictement réservés. Reproduction ou communication à des tiers interdite sous quelque forme que ce soit sans autorisation écrite du propriétaire. Propriété de c FCI. Droits de reproduction FCI.

All rights strictly reserved. Reproduction or issue to third parties in any form whatever is not permitted without written authority from the proprietor. Property of FCI. Copyright FCI.



SEE NOTE 3

CODE	DIM "M" ±0.010 [0.25]		CONTACT TYPE
G	0.220	[5.59]	SIGNAL
R	0.270	[6.86]	SIGNAL
S	0.270	[6.86]	SIGNAL
T	0.270	[6.86]	SIGNAL
PA	N/A	[N/A]	POWER
HA	N/A	[N/A]	HOLD-DOWN

mat'l code				NOTE 1		tolerances unless otherwise specified		CUSTOMER COPY		FCI www.fciconnect.com	
ltr	ecn no.	dr	date	linear	.XX±.01/.X±.3	projection	title		7P + 40S		
A	V02392	JRW	10-13-00		.XXX±.005/.XX±.13		RIGHT ANGLE SOLDER HEADER		product family PwrBlade code 213		
B	V11298	JRW	04-23-01	angles	.XXX±.0020/.XXX±.051		size		dwg no 51657 SHEET 1 OF 2		
C	V12541	DAI	12-05-01		0°±2°	scale		1:1			
D	DG05-0375	GuoJM	10/07/05	dr	C. BAROT 05-08-99	cage code		22526			
E	DG06-0011	CS	01/09/06	enr	J. BROWN 05-08-99	sheet index		1 2			
				chr	J. BROWN 05-08-99	revision sheet		1 2			
				appd	J. BROWN 08-20-99	E E		1 2			

form no. 7530-001-103

cage code 22526

PDM: Rev:E

STATUS:Released

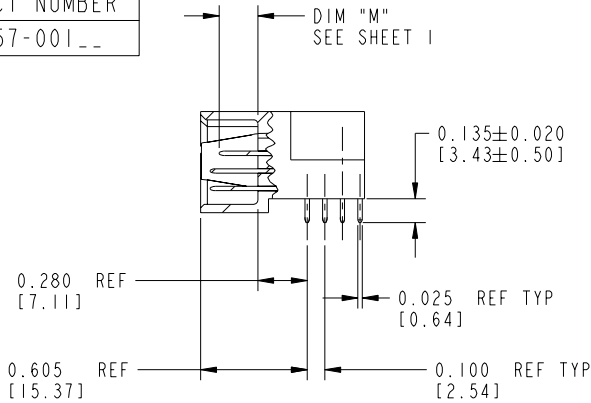
Printed: Dec 20, 2010

Tous droits strictement réservés. Reproduction ou communication à des tiers interdite sous quelque forme que ce soit sans autorisation écrite du propriétaire. Property of FCI. Droits de reproduction FCI.

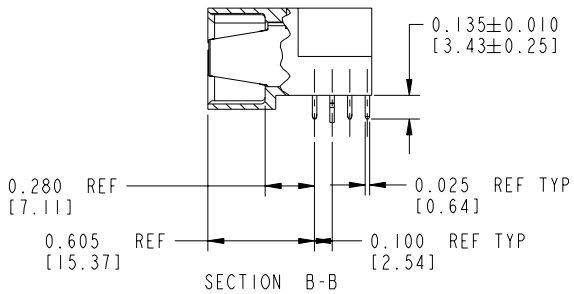
All rights strictly reserved. Reproduction or issue to third parties in any form whatever is not permitted without written authority from the proprietor. Property of FCI. Copyright FCI.

PRODUCT NUMBER  
51657-001\_\_

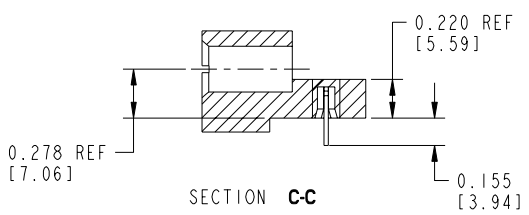
DIM "M"  
SEE SHEET 1



SECTION A-A



SECTION B-B



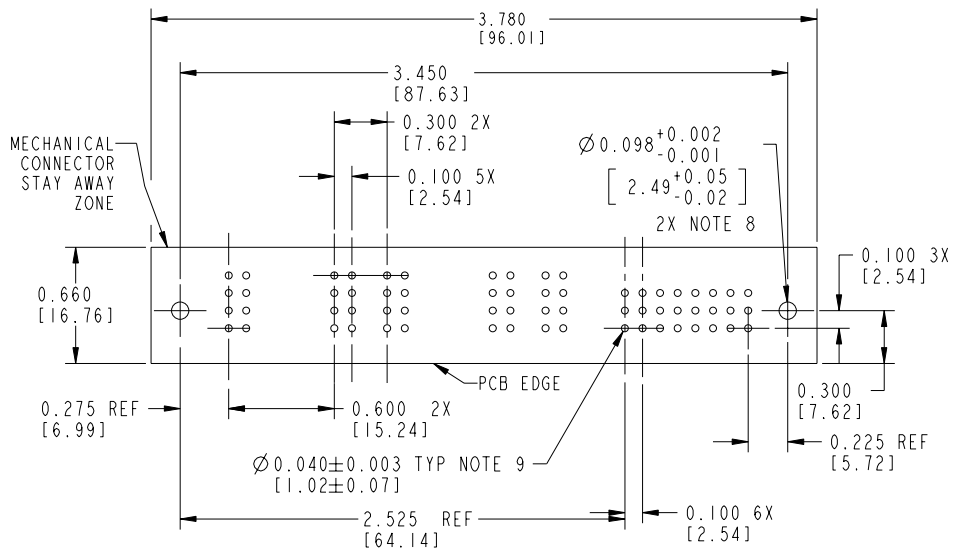
SECTION C-C

CONNECTOR NOTES:

1. HOUSING MATERIAL: UL 94 V-0 GLASS FILLED HIGH TEMP THERMOPLASTIC  
POWER CONTACT MATERIAL: COPPER ALLOY  
SIGNAL CONTACT MATERIAL: COPPER ALLOY
3. PLATING:  
51657,51657LF,PLATING SPEC SEE PRINT:100064183.
3. "MANUFACTURER'S" NAME, P/N, AND DATE CODE TO APPEAR ON THIS SURFACE
4. PRODUCT SPECIFICATION GS-12-149

PCB NOTES:

5. ALL DIMENSIONS ARE BASIC UNLESS OTHERWISE SPECIFIED.
6. ALL THROUGH HOLES ARE LOCATED WITH A TRUE POSITION OF 0.004 [0.10]
7. ALL HOLE DIAMETERS ARE FINISHED HOLE SIZE
8.  $\varnothing 0.098 [2.49]$  THROUGH HOLES ARE UNPLATED.
9.  $\varnothing 0.0453 \pm 0.0010 [1.151 \pm 0.025]$  DRILLED HOLES PLATED WITH 0.0003 [0.008] MIN SnPb OVER 0.001 [0.03] TO 0.003 [0.08] Cu PLATING TO ACHIEVE A  $\varnothing 0.040 \pm 0.003 [1.02 \pm 0.07]$  HOLE.



RECOMMENDED PCB LAYOUT

mat'l code		NOTE 1		tolerances unless otherwise specified		CUSTOMER COPY		 www.fciconnect.com	
ltr	ecn no.	dr	date	linear	.XX±.01/.X±.3	projection	title	7P + 40S	
E					.XXX±.005/.XX±.13		RIGHT ANGLE SOLDER HEADER		product family
				angles	.XXX±.0020/.XXX±.051				PwrBlade
				dr	0°±2°	INCH / MM			code
				enr	C. BAROT 05-08-99	scale	1:1		213
				chr	J. BROWN 05-08-99		size		SHEET
				appd	J. BROWN 08-20-99		A		2
sheet index	revision sheet						cage code		
							22526		