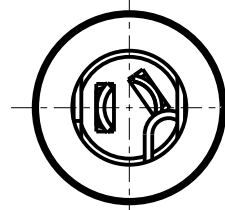
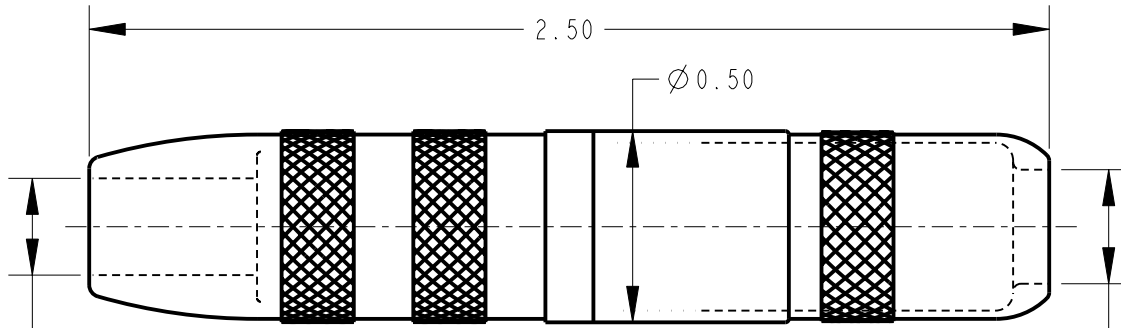
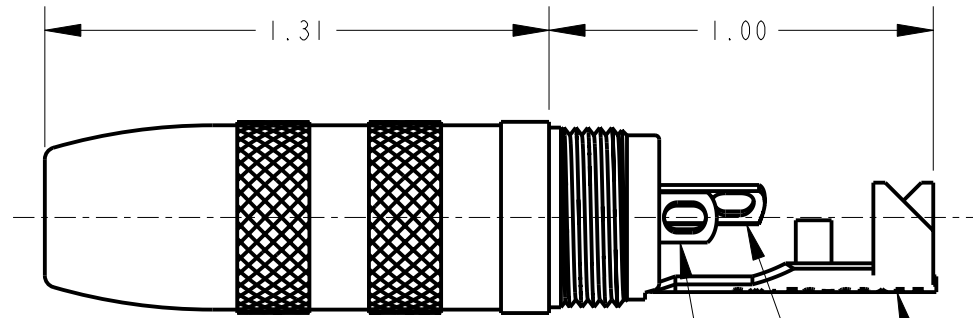


Ø 0.25



Ø 0.30



VIEW SHOWN WITH HANDLE REMOVED

SLEEVE TERMINAL CABLE CLAMP

"R" - RING TERMINAL

"T" - TIP TERMINAL

NOTES:

- MATERIALS  
 HOUSING & HANDLE - COPPER ALLOY, NICKEL PLATED  
 SPRINGS & GROUND CLIP - COPPER ALLOY  
 CABLE CLAMP - STEEL, TIN PLATED  
 INSULATOR - NYLON  
 WASHER - PHENOLIC

2. THIS PRODUCT IS RoHS COMPLIANT.

CUSTOMER DRAWING

					★ STAR SYMBOL DENOTES CRITICAL DIMENSION	THIS DRAWING DESCRIBES A DESIGN CONSIDERED PROPRIETARY IN NATURE, DEVELOPED AND MANUFACTURED BY SWITCHCRAFT INC. AND IS RELEASED ON A CONFIDENTIAL BASIS FOR IDENTIFICATION PURPOSES ONLY.				
					UNLESS OTHERWISE SPECIFIED	SIZE	WIDTH	MULT	LBS/M	TEMPER
					1. ALL DIMENSIONS IN INCHES - TWO PLACE DECIMALS ±0.01 - THREE PLACE DECIMALS ±0.005 - ANGLES ±1° - ALL DIA. CONCENTRIC WITHIN 0.005 T.I.R.	FINISH			MATERIAL	
					2. FEATURES ON THE SAME CENTERLINE MUST BE ALIGNED WITHIN ±0.002	SPEC No.			SPEC No.	
					3. REMOVE ALL BURRS	FIRST USED ON		SCALE		<b>Switchcraft®</b>
						2:1				
F	21962	5-13-09	TJK	TJK		DATE DRAWN	BY	CHKD	APVD	
						13-May-09	TJK	TJK	TJK	
								5-13-09	5-13-09	
REV	ECO NUMBER	DATE	BY	APVD		NAME			PART No.	
					DO NOT SCALE DRAWING	EXTENSION JACK			131	
						Ø 1/4" - 3 CONDUCTOR, RoHS			F	