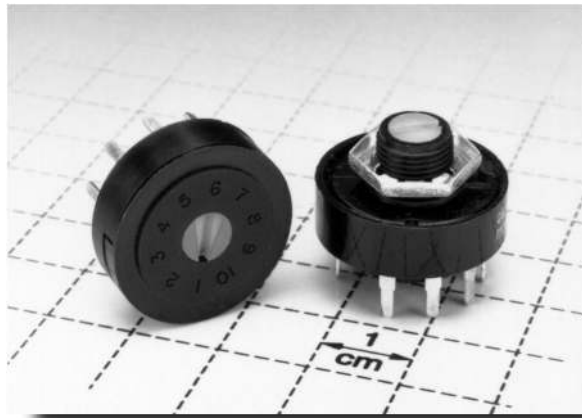


# R Series ROTA-SLIDE® Rotary Switches



## Features/Benefits

- Multi-pole and multi-position
- Positive detent
- Panel and PCB mounting
- Enclosed

## Typical Applications

- Ceiling fans
- Industrial equipment
- Portable tools



Rotary

## Build-A-Switch

Our easy Build-A-Switch concept allows you to mix and match options to create the switch you need. Below is a complete listing of options shown in catalog. To order, simply select desired option from each category and place in the appropriate box. A switch with standard options is shown on page I-9. Available options are shown and described on pages I-9 and I-10. For additional options not shown in catalog, consult Customer Service Center.

Typical Example: R 1 0 0 — 0 7 — R R — 0 3 — Q —  

### Switch Function

- R100** (STD.) SP, 36° Index, 10 pos. no stops
- R101** SPST, 36° Index
- R102** SPDT, 36° Indexing
- R103** SP, 36° Index, 3 pos.
- R104** SP, 36° Index, 4 pos.
- R105** SP, 36° Index, 5 pos.
- R106** SP, 36° Index, 6 pos.
- R107** SP, 36° Index, 7 pos.
- R108** SP, 36° Index, 8 pos.
- R109** SP, 36° Index, 9 pos.
- R200** DP, 36° Index, 5 pos. no stops
- R201** DPST, 36° Index
- R202** DPDT, 36° Index
- R203** DP, 36° Index, 3 pos.
- R204** DP, 36° Index, 4 pos.
- R205** DP, 36° Index, 5 pos.

### Actuator

- 07** (STD.) .500" high with .156" flat
- 05** .375" high with .156" flat
- 15** Screwdriver slot without bushing
- 16** Screwdriver slot with bushing

### Mounting Style

- RR** (STD.) 3/8-32 threaded bushing
- RN** PC without bushing
- RS** PC without bushing

### Terminations

- 03** (STD.) Solder lug with hole
- 01** Solder lug with notch
- 02** PC Thru-hole
- WC** Wire lead

### Contact Material

- Q** (STD.) Silver
- B** Gold
- G** Gold over silver

### Seal

- NONE** (STD.) No seal
- E** Epoxy seal

## Specifications

CONTACT RATING: Q contact material: 5 AMPS @ 125 V AC; 2.5 AMPS @ 250 V AC; 0.5 AMP @ 125 V DC (UL/CSA). See page I-10 for additional ratings.

ELECTRICAL LIFE: 10,000 make-and-break cycles at full load.

CONTACT RESISTANCE: Below 10 milliohms typ. initial @ 2-4 V DC, 100 mA, for both silver and gold plated contacts.

INSULATION RESISTANCE: 10<sup>9</sup> ohms min.

DIELECTRIC STRENGTH: 1,000 V RMS min. @ sea level.

INDEXING: 36°-one contact models, 10 position max.; two contact models, 5 position max.

## Materials

HOUSING & BUSHING: 6/6 nylon (UL 94V-2).

ACTUATOR: 6/6 nylon (UL 94V-2).

CONTACTS & TERMINALS: Q contact material: Copper, silver plated. See page I-10 for additional contact materials.

CONTACT SPRING: Music wire or stainless steel.

MOUNTING NUT: Steel, zinc plated.

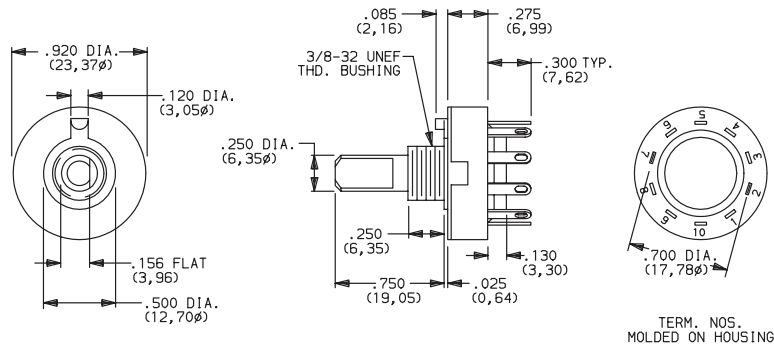
TERMINAL SEAL: Epoxy.

**NOTE:** Specifications and materials listed above are for switches with standard options. For information on specific and custom switches, consult Customer Service Center.

## SWITCH WITH STANDARD OPTIONS

PART NUMBER	FUNCTION	INDEXING
<b>R10907RR03Q</b>	SP	36°

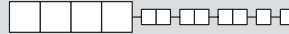
NOTE: For panel mounting information, see page I-10.



R10007RR03Q  
SP

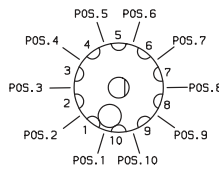
TERM. NOS.  
MOLDED ON HOUSING

## SWITCH FUNCTION

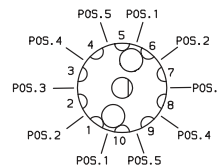


SP MODELS 36° INDEXING			
NO. POLES	MODEL NO.	SWITCH FUNCTION	TERMINALS
SP	<b>R100</b>	10 Position No Stops	All Terminals
	<b>R101</b>	SPST	1-2
	<b>R102</b>	SPDT	10-1-2
	<b>R103</b>	3 Position	10-1-2-3
	<b>R104</b>	4 Position	10-1-2-3-4
	<b>R105</b>	5 Position	10-1-2-3-4-5
	<b>R106</b>	6 Position	10-1-2-3-4-5-6
	<b>R107</b>	7 Position	10-1-2-3-4-5-6-7
	<b>R108</b>	8 Position	10-1-2-3-4-5-6-7-8
<b>R109</b>	9 Position	All Terminals	

### SP MODELS 36° INDEXING SCHEMATIC



### DP MODELS 36° INDEXING SCHEMATIC

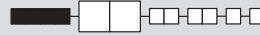


DP MODELS 36° INDEXING			
NO. POLES	MODEL NO.	SWITCH FUNCTION	TERMINALS
DP	<b>R200</b>	5 Position No Stops	All Terminals
	<b>R201</b>	DPST	1-2, 6-7
	<b>R202</b>	DPDT	10-1-2, 5-6-7
	<b>R203</b>	3 Position	10-1-2-3, 5-6-7-8
	<b>R204</b>	4 Position	All Terminals
	<b>R205</b>	5 Position	All Terminals

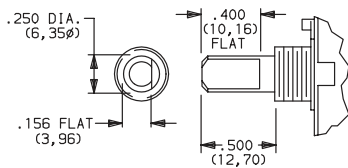
All models with all options when ordered with 'G' or 'Q' contact material.

NOTE: Break-before-make contacts. Actuators and contacts are shown in position 1. No common terminal is present. Switching function is provided by movable contacts shorting adjacent pairs of stationary contacts.

## ACTUATOR

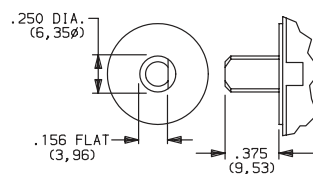


**07 (STD.)** .500" HIGH WITH .156" FLAT



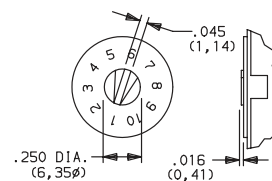
Shown with 'RR' mounting style. For mounting styles without bushing, add .250 (6,35) to actuator length.

**05** .375" HIGH WITH .156" FLAT



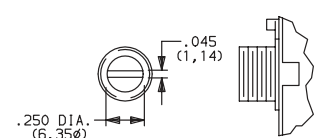
Shown with 'RN' mounting style.

**15** SCREWDRIVER SLOT WITHOUT BUSHING



Arrow on actuator marked red (std.). Shown with 'RS' mounting style.

**16** SCREWDRIVER SLOT WITH BUSHING



Shown with 'RR' mounting style. For mounting styles without bushing, add .250 (6,35) to actuator length.

# R Series ROTA-SLIDE® Rotary Switches

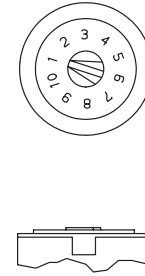
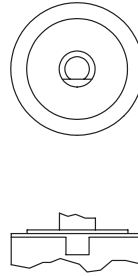
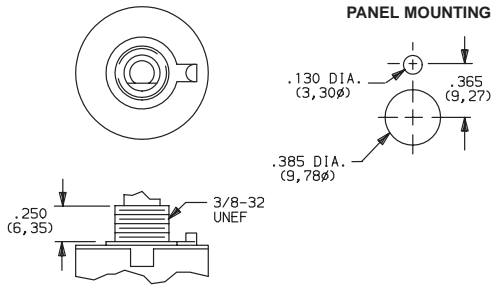


## MOUNTING STYLE

**RR** (STD.) 3/8-32 THREADED BUSHING

**RN** PC WITHOUT BUSHING

**RS** PC SCREWDRIVER SLOT WITHOUT BUSHING



Mounting nut included (part number 175000100).

Position numbers and characters are molded on housing.

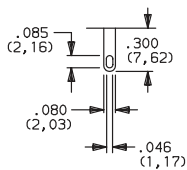
## TERMINATIONS

**03** (STD.) SOLDER LUG WITH HOLE

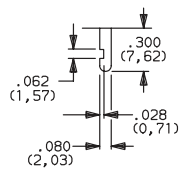
**01** SOLDER LUG WITH NOTCH

**02** PC THRU-HOLE

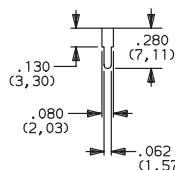
**WC** WIRE LEAD



.020 THK.  
(0, 51)

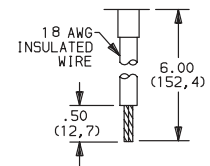
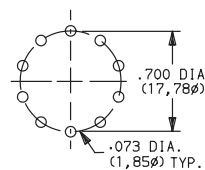


.020 THK.  
(0, 51)



.020 THK.  
(0, 51)

### PC MOUNTING



Black wire standard, other colors and lengths available, consult Customer Service Center. UL Style 1015.

## CONTACT MATERIAL

OPTION CODE	CONTACT AND TERMINAL MATERIAL	RATINGS	
<b>Q</b> (STD.)	SILVER <sup>2</sup>	POWER	5 AMPS @ 125 V AC; 2.5 AMPS @ 250 V AC; 0.5 AMP @ 125 V DC (UL/CSA).
<b>B</b>	GOLD <sup>1</sup>	LOW LEVEL/DRY CIRCUIT	0.4 VA MAX. @ 20 V AC OR DC MAX.
<b>G</b>	GOLD OVER SILVER <sup>3</sup>	LOW LEVEL/DRY CIRCUIT OR POWER	0.4 VA MAX. @ 20 V AC OR DC MAX. OR 5 AMPS @ 125 V AC; 2.5 AMPS @ 250 V AC; 0.5 AMP @ 125 V DC (UL/CSA).

CONTACT MATERIAL / APPLICATION RECOMMENDATIONS—SEE CHART, PAGE L-31.

- CONTACTS & TERMINALS: Copper, with gold plate over nickel plate.
- CONTACTS & TERMINALS: Copper, silver plated. (Standard with all termination options.)
- CONTACTS & TERMINALS: Copper, with gold plate over silver plate.

All models with all options when ordered with 'G' or 'Q' contact material.

## SEAL

**NONE** (STD.) NO SEAL

**E** EPOXY SEAL

