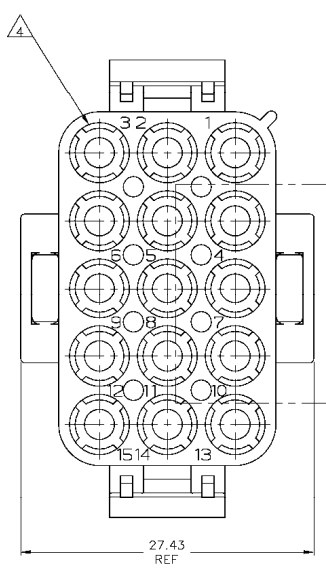
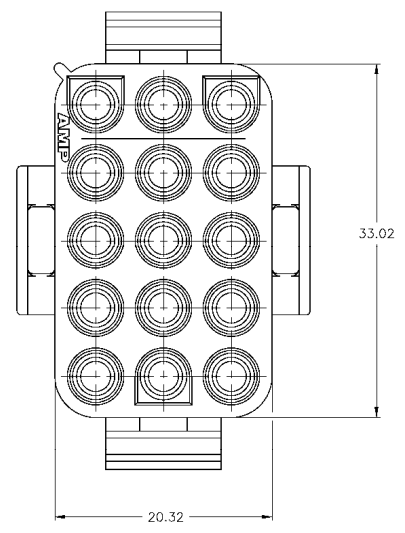
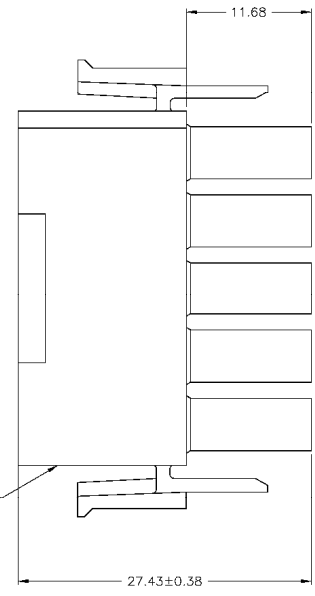


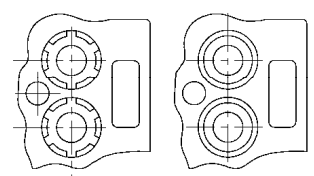
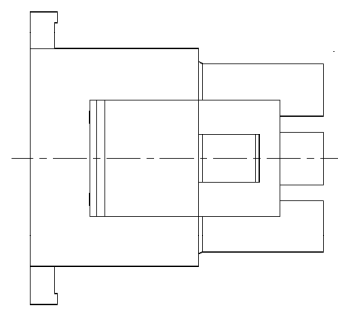
REV	DATE	DESCRIPTION	DATE	BY	APP
A1	13OCT2017	REVISED PER ECR-17-014051		BDA	KR



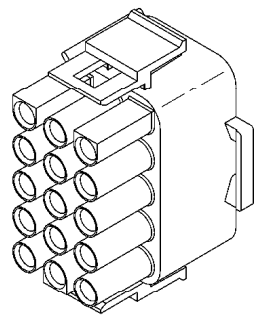
SEE DETAIL A



- MATES WITH APPROPRIATE UNIVERSAL MATE-N-LOK™ CAP OR HEADER.
 - SMALL NICKS ARE PERMITTED ON THE CIRCUIT TOWERS WHICH COULD INCREASE THE INITIAL HOUSING MATING FORCE BY UP TO 4.4 NEWTONS [1.0 LBS]. NO INDIVIDUAL NICKED TOWER SHALL INCREASE THIS FORCE BY OVER 2.2 NEWTONS [.5 LBS].
 - DIMENSIONS SHOWN REPRESENT PRODUCT IN DRY, AS MOLDED, CONDITION. ADDITIONAL 2% GROWTH DUE TO SUBSEQUENT MOISTURE ABSORPTION MAY OCCUR AND SHOULD BE ACCOUNTED FOR.
- △4 FOUR RIBS EQUALLY SPACED, NO SPECIFIC ORIENTATION. NO RIBS OR SIX RIBS EQUALLY SPACED, NO SPECIFIC ORIENTATION, OPTIONAL.
 - △5 NOT MANUFACTURED IN U.S.
 - △6 UNDERWRITERS RECOGNIZED COMPONENT LOGO AND CSA CERTIFICATION LOGO TO BE LOCATED ONCE ON EACH SIDE OF HOUSING.
 - △7 MATERIAL CORRESPONDING TO THE REQUIREMENTS OF IEC 60335 (INCL. GLOW WIRE TEST 750°C WITHOUT FLAME)



DETAIL A
OPTIONAL CONSTRUCTION



3-DIMENSIONAL MODEL
NOT TO SCALE

MM	IN
33.02	1.300
27.43	1.080
20.32	.800
11.68	.460
0.38	.015
0.13	.005

CONVERSION TABLE

NATURAL	1863007-1
COLOR	PART NUMBER



THIS DRAWING IS A CONTROLLED DOCUMENT		DN J. SALO 24JAN2008	PLUG, 15 CIRCUIT, UNIVERSAL MATE-N-LOK™	RESTRICTED TO
DIMENSIONS: mm		DR J. LAZARO 24JAN2008	APPLICATION SPEC	SCALE 4:1
TOLERANCES UNLESS OTHERWISE SPECIFIED:		APPV L. BATILLO 24JAN2008	SIZE DATE CODE DRAWING NO. A1 00779	SHEET 1 OF 1
0 P.L.C. ± .05	1 P.L.C. ± .13	PROJECT SPEC	1863007	REV A1
2 P.L.C. ± .13	3 P.L.C. ± .13	APPLICATION SPEC	CUSTOMER DRAWING	
4 P.L.C. ± .13	ANGLES ± 0.25	REQUIRE		
MATERIAL PA6	FINISH			