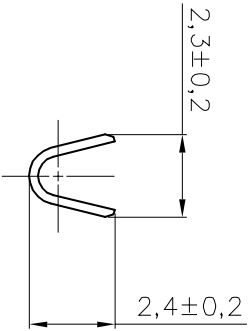
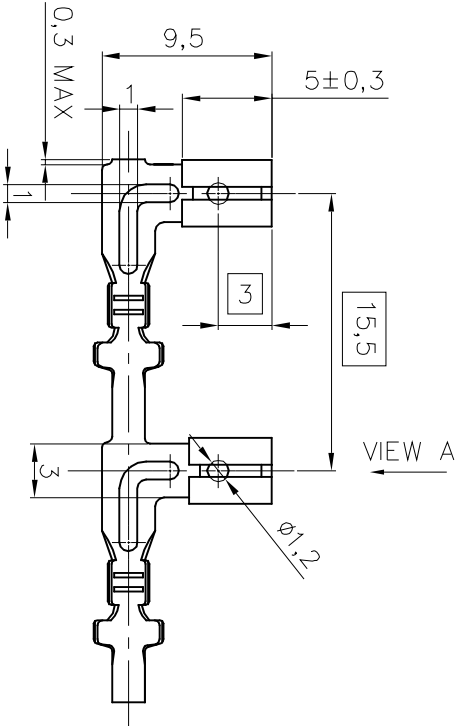


VIEW A  
2 : 1



SECTION B-B  
2 : 1



SECTION A-A  
2 : 1

- NOTES:
1. MATERIAL: COPPER ALLOY.  
STRIP THICKNESS: 0.25 mm.
  2. CONTINUOUS STRIP ON REELS.
  3. APPLICATION DATA:  
WIRE: 0.3~0.8 mm<sup>2</sup> (AWG# 18 ~ AWG# 22).  
INSULATION: Ø 2.8 mm MAX.

DIST	LOC	P LTR	REVISION/RECORD	DATE	DWN	APVD
	EC					

TOLERANCES UNLESS OTHER SPECIFIED: 0 PLG ± 0.20 1 PLG ± 0.15 2 PLG ± 0.15 ANGLE ±		DR BOBIS WONG DATE 28-9-2004	DATE 28-9-2004	FINISH BARE	P/N 1494217-1
DIMENSIONS IN mm		CTR BOBIS WONG APVD S. F. SHUM DATE 28-9-2004	DATE 28-9-2004	MATERIAL △	FINISH N/A
APPLICATION SPEC 108-58501		PRODUCT SPEC 108-58501	RESTRICTED TO SCALE 1:1	Tyco Electronics Hong Kong Limited Room 1301, Ocean Centre No. 5 Canton Rd, Tsimshoai Kowloon Hong Kong	
114-58500		114-58500	SIZE A5	DWG NO. C-1494217	SHEET 1 OF 1
110 FASTON ANGLED RECEPTACLE		NAME			

12 11 10 9 8 7 6 5 4 3 2 1