

REVISION A

DO NOT SCALE FROM THIS PRINT

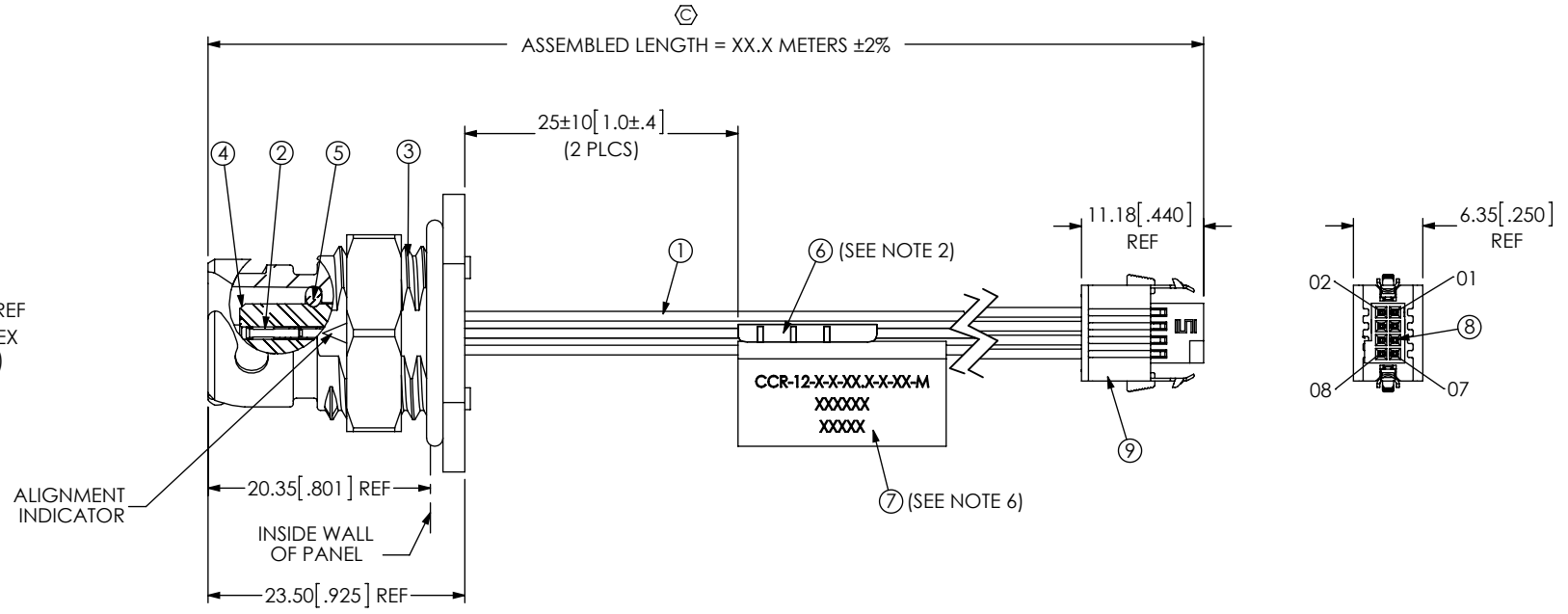
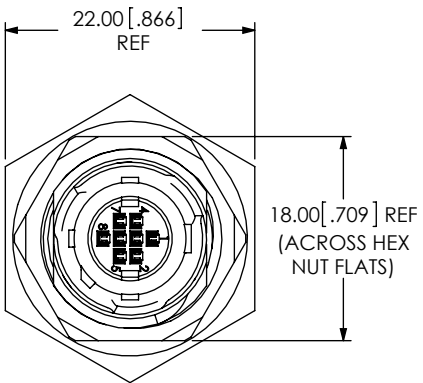
CCR-12-1-L-XX.X-S-S1-M BOM			
ITEM NO.	PART NUMBER	QTY	DESCRIPTION
1	DWC-XX-XX-XXX	XXX	CABLE
2	C-C393-2830-L	8	CONTACT
3	SUB-ACR-12-01-M	1	SUB ACCLIMATE ASSEMBLY
4	CCSHB-12-1	1	HOLDER BODY
5	ACO-12-1	1	O-RING
6	LABEL-ET	1	LABEL
7	HDRL-11	1	LABEL
8	C-203-2830-G	8	CONTACT
9	ISDF-04-D-M	1	INSULATOR & LATCH

DESIGNED & DIMENSIONED IN MILLIMETERS [INCHES]

CCR-12-X-X-XX.X-X-XX-M


SHELL SIZE
LEAD STYLE -1: 8 POS, 28 AWG
PLATING SPECIFICATION -L: 10µ" LIGHT GOLD IN CONTACT AREA BRIGHT ACID TIN ON TAIL
ASSEMBLED LENGTH XX.X (IN METERS) (0.1 METER MIN TO 50.0 METER MAX)

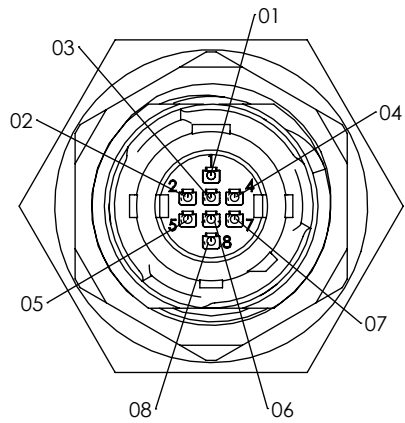
STYLE -M: METAL
END 2 -B: BLUNT CUT (SEE FIG 2, SHT 2) -S1: CONNECTOR
END 1 -T: TERMINAL -S: SOCKET



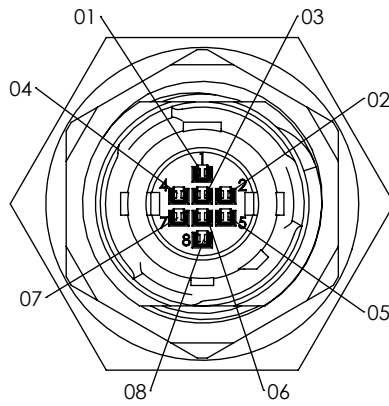
NOTES:

- ⊗ REPRESENTS A CRITICAL DIMENSION.
- ⊗ ASSEMBLY TO BE 100% TESTED FOR CONTINUITY, ISOLATION, & HI-POT AT 300V. (1) LABEL-ET TO BE APPLIED AFTER FINAL ELECTRICAL TEST.
- ASSEMBLIES TO BE LAYER PACKAGED PER PACAKAGING STANDARD CO-RF-WI-3001-M.
- SIGNAL MAPPING IS 1 TO 1, 2 TO 2, 3 TO 3, ETC.
- REFER TO DCA-ACR-12-M-X PRINT FOR DUST CAP.
- PLACE LABEL ON CABLE WHERE SHOWN. LABEL TO CONTAIN:
LINE 1 - PART NUMBER "CCR-12-X-X-XX.X-X-XX-M"
LINE 2 - SHOP ORDER NUMBER "XXXXXX"
LINE 3 - DATE CODE "XXXXX"
- PANEL THICKNESS RANGE: 0.80 [.031] - 5.20 [.205].
- PANEL NUT TORQUE SPEC: 15 - 20 IN-LB.
- ⊗ REFER TO CRIMP-SPECIFICATIONS PRINT FOR CRIMP AND STRIP DIMENSIONS, TOLERANCES, TOOLING, AND ITS REQUIREMENTS.
- ⊗ 10. TERMINALS/CONTACTS MUST BE INSERTED UNTIL RETENTION FEATURE LOCKS INTO PLACE.

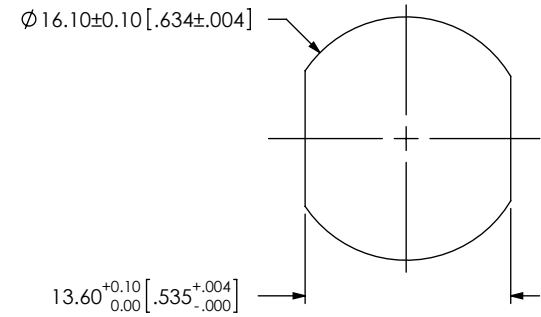
UNLESS OTHERWISE SPECIFIED, DIMENSIONS ARE IN MILLIMETERS. TOLERANCES ARE: DECIMALS ANGLES X.X: ±0.3 [.01] 2° X.XX: ±0.13 [.005] X.XXX: ±0.051 [.0020]	PROPRIETARY NOTE THIS DOCUMENT CONTAINS INFORMATION CONFIDENTIAL AND PROPRIETARY TO SAMTEC, INC. AND SHALL NOT BE REPRODUCED OR TRANSFERRED TO OTHER DOCUMENTS OR DISCLOSED TO OTHERS OR USED FOR ANY PURPOSE OTHER THAN THAT WHICH IT WAS OBTAINED WITHOUT THE EXPRESSED WRITTEN CONSENT OF SAMTEC, INC.	 520 PARK EAST BLVD., NEW ALBANY, IN 47150 PHONE: 812-944-6733 FAX: 812-948-5047 e-Mail info@SAMTEC.com code 53322	
		DESCRIPTION: ACCLIMATE CRIMP CABLE ASSEMBLY DWG. NO. CCR-12-X-X-XX.X-X-XX-M BY: JESSIE W 9/27/2014 SHEET 1 OF 4	



-T END OPTION
-1: 8 POS



-S END OPTION
-1: 8 POS



RECOMMENDED PANEL OPENING
(SEE NOTES 7 & 8)

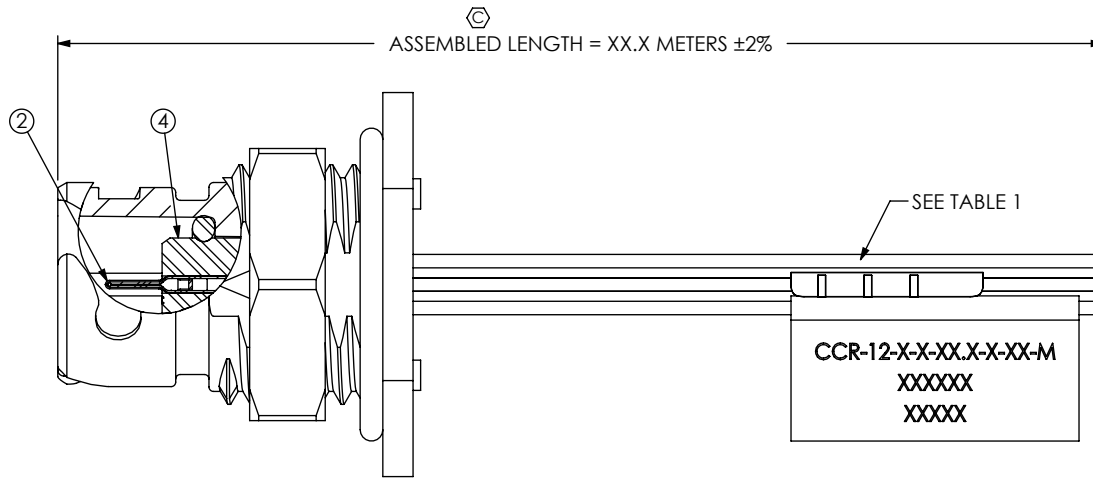


FIG 2
CCR-12-1-X-XX.X-T-B-M SHOWN
(DIFFERENT AS SHOWN, OTHERWISE SAME AS FIG 1)

CCR-12-1-L-XX.X-T-B-M BOM			
ITEM NO.	PART NUMBER	QTY	DESCRIPTION
1	DWC-XX-XX-XXX	XX.X	CABLE
2	T-C114-2830-L	8	TERMINAL
3	SUB-ACR-12-01-M	1	SUB ACCLIMATE PANEL
4	CCTHB-12-1	1	HOLDER BODY
5	ACO-12-1	1	O-RING
6	LABEL-ET	1	LABEL
7	HDRL-11	1	LABEL

PROPRIETARY NOTE
THIS DOCUMENT CONTAINS INFORMATION CONFIDENTIAL AND PROPRIETARY TO SAMTEC, INC. AND SHALL NOT BE REPRODUCED OR TRANSFERRED TO OTHER DOCUMENTS OR DISCLOSED TO OTHERS OR USED FOR ANY PURPOSE OTHER THAN THAT WHICH IT WAS OBTAINED WITHOUT THE EXPRESSED WRITTEN CONSENT OF SAMTEC, INC.

DO NOT SCALE DRAWING

SHEET SCALE: 2:1

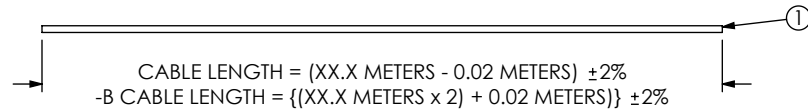


520 PARK EAST BLVD, NEW ALBANY, IN 47150
PHONE: 812-944-6733 FAX: 812-948-5047
e-Mail info@SAMTEC.com code 55322

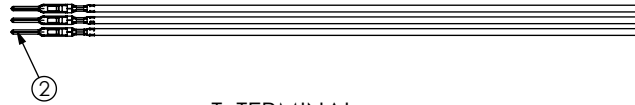
DESCRIPTION:
ACCLIMATE CRIMP CABLE ASSEMBLY

DWG. NO.
CCR-12-X-X-XX.X-X-XX-M

BY: JESSIE W 9/27/2014 SHEET 2 OF 4



IN-PROCESS 1
 CUT CABLE TO LENGTH

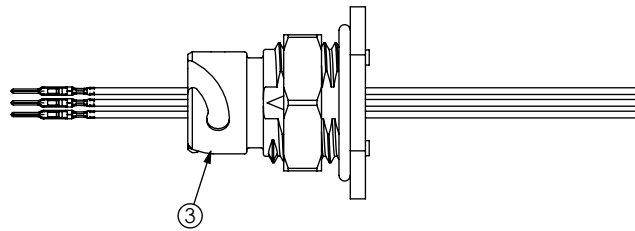


-T: TERMINAL

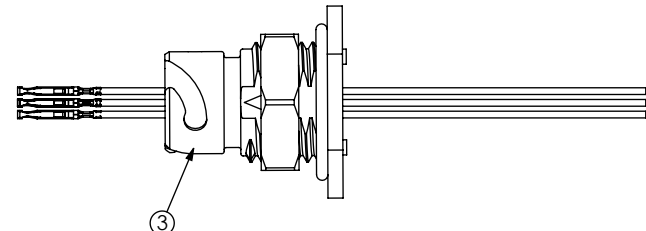


-S: SOCKET

IN-PROCESS 2
 STRIP & CRIMP WIRES TO TERMINALS/SOCKETS
 (SEE NOTE 9)

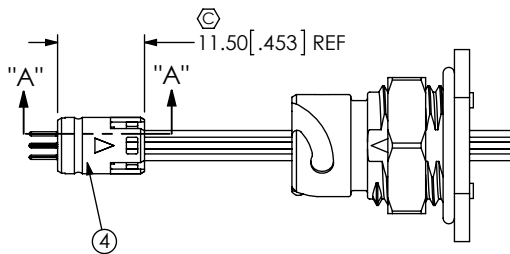


-T: TERMINAL

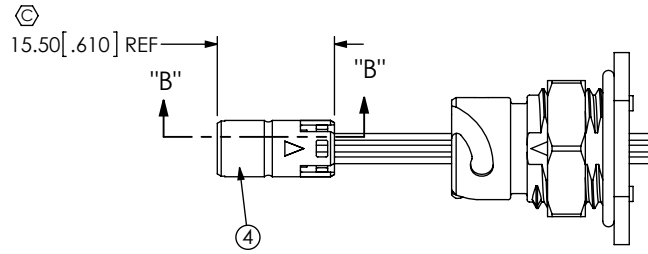


-S: SOCKET

IN-PROCESS 3
 FEED CABLES THROUGH SUB ACCLIMATE ASSEMBLY

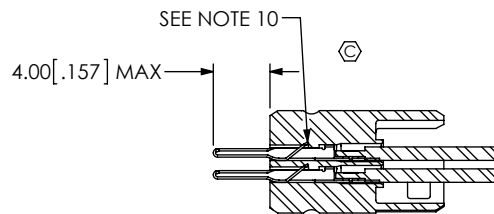


-T: TERMINAL

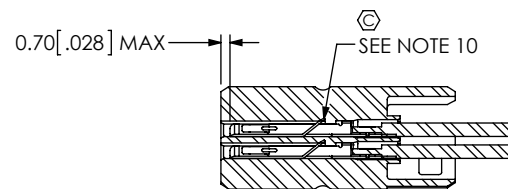


-S: SOCKET

IN-PROCESS 4
 ATTACH HOLDER BODY
 (SEE NOTE 4 & 10)



SECTION "A"- "A"
 SCALE 2 : 1



SECTION "B"- "B"
 SCALE 2 : 1

TABLE 1				
POSITION	COLOR	-B	COLOR	-S1
		DWC-XX-XX-XXX		DWC-XX-XX-XXX
01	BROWN	DWC-28-01-300	BLACK	DWC-28-10-300
02	RED	DWC-28-02-300	BLACK	DWC-28-10-300
03	ORANGE	DWC-28-03-300	BLACK	DWC-28-10-300
04	YELLOW	DWC-28-04-300	BLACK	DWC-28-10-300
05	GREEN	DWC-28-05-300	BLACK	DWC-28-10-300
06	DARK BLUE	DWC-28-06-300	BLACK	DWC-28-10-300
07	VIOLET	DWC-28-07-300	BLACK	DWC-28-10-300
08	GRAY	DWC-28-08-300	BLACK	DWC-28-10-300

PROPRIETARY NOTE
 THIS DOCUMENT CONTAINS INFORMATION
 CONFIDENTIAL AND PROPRIETARY TO
 SAMTEC, INC. AND SHALL NOT BE REPRODUCED
 OR TRANSFERRED TO OTHER DOCUMENTS OR
 DISCLOSED TO OTHERS OR USED FOR ANY
 PURPOSE OTHER THAN THAT WHICH IT WAS
 OBTAINED WITHOUT THE EXPRESSED WRITTEN
 CONSENT OF SAMTEC, INC.

DO NOT SCALE DRAWING

SHEET SCALE: 1:1

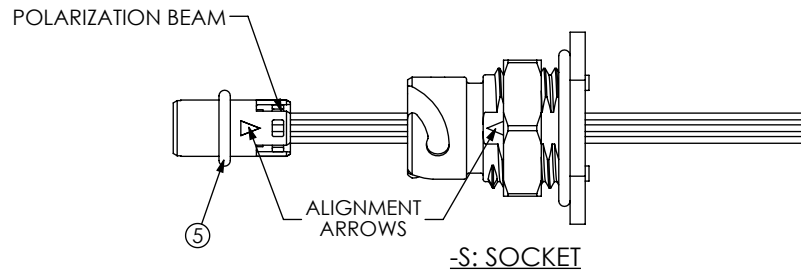
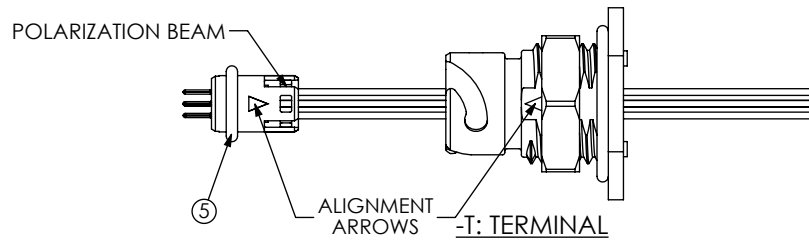


520 PARK EAST BLVD, NEW ALBANY, IN 47150
 PHONE: 812-944-6733 FAX: 812-948-5047
 e-Mail: info@SAMTEC.com code 55322

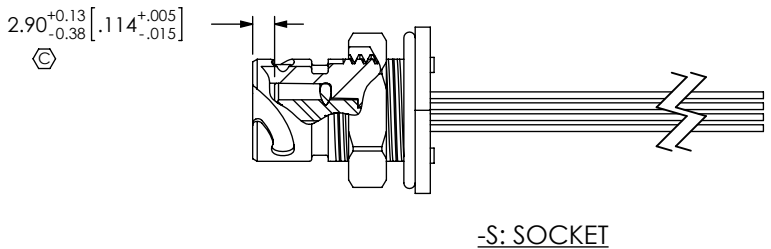
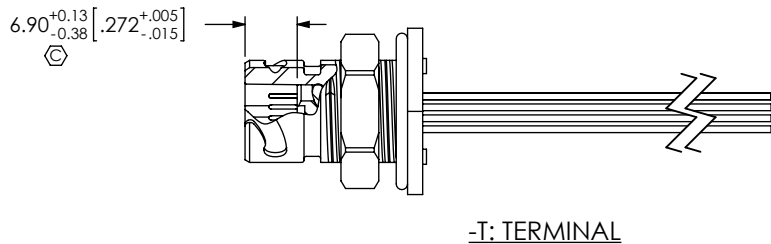
DESCRIPTION:
 ACCLIMATE CRIMP CABLE ASSEMBLY

DWG. NO.
 CCR-12-X-X-XX.X-X-XX-M

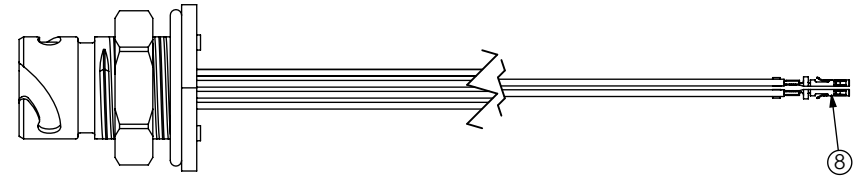
BY: JESSIE W 9/27/2014 SHEET 3 OF 4



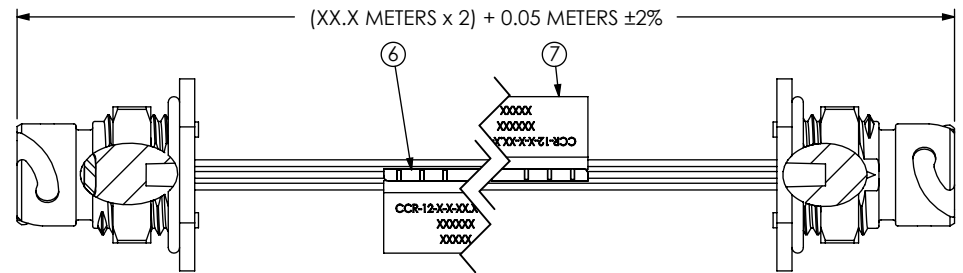
IN-PROCESS 5
PUSH O-RING ONTO HOLDER BODY



IN-PROCESS 6
WHILE MAKING SURE THE ALIGNMENT ARROWS LINE UP TO AID POLARIZATION BEAM ENGAGEMENT, INSERT HOLDER BODY INTO SHELL UNTIL SNAP LOCKS ENGAGE.



IN-PROCESS 7
(-S1 OPTION ONLY)
STRIP & CRIMP WIRES TO SOCKETS
(SEE NOTE 9)



IN-PROCESS 7
(-B OPTION ONLY)
BUILD DOUBLE-ENDED INITIALLY FOR E-TEST,
APPLY LABELS TO BOTH ENDS,
AND CUT CABLE IN HALF

PROPRIETARY NOTE

THIS DOCUMENT CONTAINS INFORMATION CONFIDENTIAL AND PROPRIETARY TO SAMTEC, INC. AND SHALL NOT BE REPRODUCED OR TRANSFERRED TO OTHER DOCUMENTS OR DISCLOSED TO OTHERS OR USED FOR ANY PURPOSE OTHER THAN THAT WHICH IT WAS OBTAINED WITHOUT THE EXPRESSED WRITTEN CONSENT OF SAMTEC, INC.

DO NOT SCALE DRAWING

SHEET SCALE: 1:1



520 PARK EAST BLVD, NEW ALBANY, IN 47150
PHONE: 812-944-6733 FAX: 812-948-5047
e-Mail: info@SAMTEC.com code 55322

DESCRIPTION:
ACCLIMATE CRIMP CABLE ASSEMBLY

DWG. NO.
CCR-12-X-X-XX.X-X-XX-M

BY: JESSIE W 9/27/2014 SHEET 4 OF 4