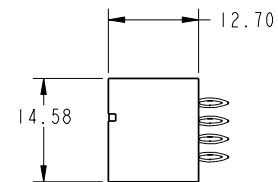
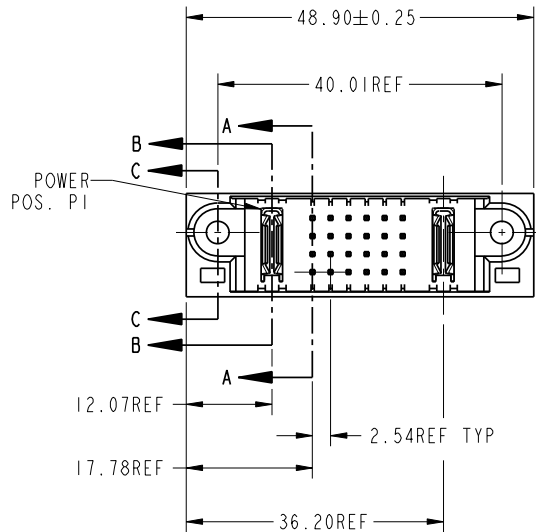
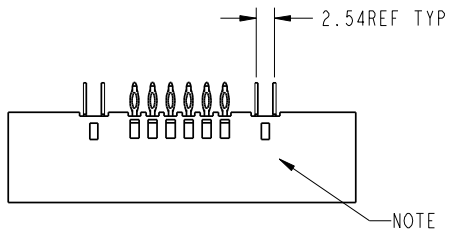


Tous droits strictement reserves. Reproduction ou communication a des tiers interdite sous quelque forme que ce soit sans autorisation ecrite du proprietaire. Propriete de c FCI. Droits de reproduction FCI.



All rights strictly reserved. Reproduction or issue to third parties in any form whatever is not permitted without written authority from the proprietor. Property of FCI. Copyright FCI.

PRODUCT No.	ROWS	POWER		SIGNAL						POWER			
		E1	P1	1	2	3	4	5	6	P2	E2		
51952-002-- NOTE: 3	D C B A			G	G	G	G	G	G	G	G		



CODE	DIM "M" ±.010 [0.25]	CONTACT TYPE
G	[6.86]	SIGNAL
K	[5.59]	SIGNAL
PC	[N/A]	POWER

mat'l code				SEE NOTE		tolerances unless otherwise specified		CUSTOMER		
lir	ecn no.	dr	date	linear	0.X ±0.3	COPY		FCI www.fciconnect.com		
A	V12513	DA1	10/31/01	linear	0.XX ±0.13	projection		title 1P + 24S + 1P PRESS FIT VERTICAL HEADER		
B	V21104	TBA	10/01/02	angles	0.XXX ±0.051	MM		product family PwrBlade		
C	DG05-0472	Ryan	11/17/05	dr	0° ±2°	scale 1:1		code 213		
D	DG07-0357	JULIA	09/10/07	enrg	J. ALLISON 9/19/01	size A		sheet 1 of 3		
sheet index				revision	D	D	product family		code	
				sheet	I	I	PwrBlade		213	

www.fciconnect.com  
 title: 1P + 24S + 1P PRESS FIT VERTICAL HEADER  
 product family: PwrBlade  
 code: 213  
 size: A  
 dwg no: 51952-002  
 sheet: 1 of 3  
 cage code: 22526

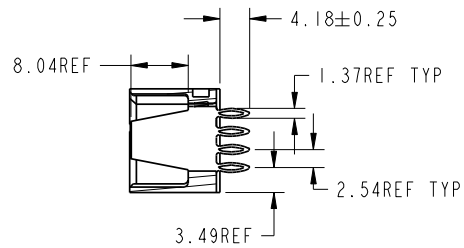
Pro/E

Tous droits strictement reserves. Reproduction ou communication a des tiers interdite sous quelque forme que ce soit sans autorisation écrite du propriétaire. Propriete de c FCI. Droits de reproduction FCI.

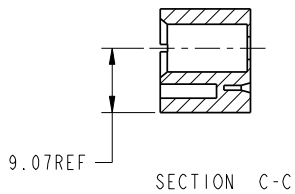


All rights strictly reserved. Reproduction or issue to third parties in any form whatever is not permitted without written authority from the proprietor. Property of FCI. Copyright FCI.

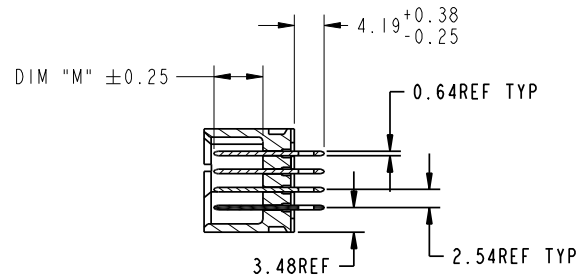
PRODUCT NUMBER  
51952-002--  
NOTE: 3



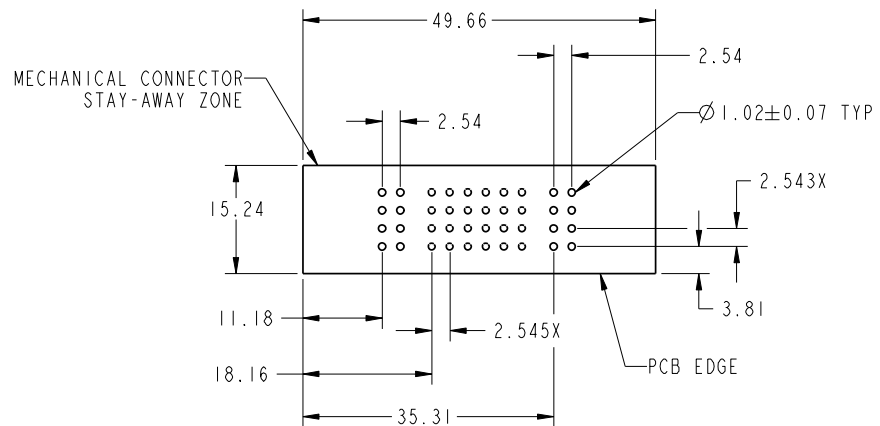
SECTION B-B



SECTION C-C



SECTION A-A



RECOMMENDED PCB LAYOUT

mat'l code				SEE NOTE		tolerances unless otherwise specified		CUSTOMER		www.fciconnect.com	
lfr	ecn no.	dr	date	linear	0.X ±0.3	projection		COPY		title	
D					0.XX ±0.13					IP + 24S + IP	
				angles	0.XXX ±0.051					PRESS FIT VERTICAL HEADER	
				dr	J. WITMER 9/19/01					product family	PwrBlade
				enr	J. ALLISON 9/19/01					size	dwg no
				chr	J. ALLISON 9/19/01					A	51952-002
				appd	J. ALLISON 9/19/01					code	213
sheet index		revision sheet				scale		1:1		sheet	2

cage code 22526

Pro/E

Tous droits strictement reserves. Reproduction ou communication a des tiers interdite sous quelque forme que ce soit sans autorisation ecrite du proprietaire. Propriete de c FCI. Droits de reproduction FCI.



All rights strictly reserved. Reproduction or issue to third parties in any form whatever is not permitted without written authority from the proprietor. Property of FCI. Copyright FCI.

PRODUCT NUMBER  
51952-002--  
NOTE: 3

NOTES:

1. DIMENSIONS AND TOLERANCES ARE IN ACCORDANCE WITH ASME Y14.5M, 1994 UNLESS OTHERWISE SPECIFIED.

CONNECTOR NOTES:

- 2 HOUSING MATERIAL: UL 94 V-0 GLASS FILLED  
HIGH-TEMP THERMOPLASTIC  
POWER CONTACT MATERIAL: COPPER ALLOY  
SIGNAL PIN MATERIAL: COPPER ALLOY
  - 3. PLATING:  
51952-002 ,51952-002LF PLATING SPEC. WAS SHOWN IN THE PRINT OF 10064183.
  - 4 MANUFACTURER'S NAME, P/N, AND DATE CODE TO APPEAR ON THIS SURFACE.
  - 5. PRODUCT SPECIFICATION GS-12-149.  
APPLICATION SPECIFICATION BUS-20-067.
  - 6. PACKAGED IN TRAYS.
- PCB NOTES:
- 7. ALL HOLE DIAMETERS ARE FINISHED HOLE SIZE.
  - 8. MOUNTING HOLES, WHERE APPLICABLE, ARE UNPLATED.
  - 9  $\varnothing 1.151 \pm 0.025$  DRILLED HOLES PLATED WITH  
0.008 MIN SnPb OR Sn OVER .001 [0.03]  
TO 0.08 Cu PLATING TO ACHIEVE  
 $\varnothing 1.02 \pm .07$  HOLE.
  - 10 "DIM XXX" TO BE DETERMINED BY THE CUSTOMER.
  - 11 CONNECTOR KEEP-OUT ZONE.
  - 12. FOR PRESS FIT APPLICATION USE FCI CAM TOOL 430169-XXX.

mat'l code				SEE NOTE		tolerances unless otherwise specified		CUSTOMER		FCI www.fciconnect.com	
ltr	ecn no.	dr	date	linear	0.X ±0.3	projection		title IP + 24S + IP PRESS FIT VERTICAL HEADER			
D					0.XX ±0.13	MM		product family		PwrBlade	
				angles	0° ±2°	scale		size		dwg no	
				dr	J. WITMER 9/19/01	1:1		A		51952-002	
				enrg	J. ALLISON 9/19/01					213	
				chr	J. ALLISON 9/19/01					sheet	
				appd	J. ALLISON 9/19/01					3	
sheet index		revision sheet									

cage code 22526

Pro/E