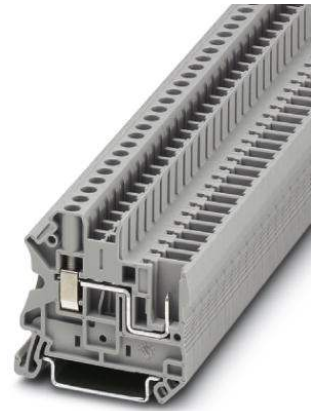


# UT 4/ 1P

Order No.: 3045583



<http://eshop.phoenixcontact.de/phoenix/treeViewClick.do?UID=3045583>

Screw terminal block, Type of connection: Pluggable screw terminal block, Screw connection, Cross section: 0.14 mm<sup>2</sup> - 6 mm<sup>2</sup>, AWG 26 - 10, Width: 6.2 mm, Color: gray, Mounting type: NS 35/7.5, NS 35/15

Commercial data	
GTIN (EAN)	4046356083096
sales group	A870
Pack	50 pcs.
Customs tariff	85369010
Weight/Piece	0.009298 KG
Catalog page information	Page 240 (CL-2009)

#### Product notes

WEEE/RoHS-compliant since: 10/10/2005



<http://www.download.phoenixcontact.com>  
Please note that the data given here has been taken from the online catalog. For comprehensive information and data, please refer to the user documentation. The General Terms and Conditions of Use apply to Internet downloads.

Technical data	
<b>General</b>	
Number of levels	1
Number of connections	2
Color	gray

Insulating material	PA
Inflammability class acc. to UL 94	V0
Bridge accessories	3030271 FBS 10-6 32 A

**Dimensions**

Width	6.2 mm
Length	47.6 mm
Height NS 35/7.5	47.5 mm
Height NS 35/15	55 mm

**Technical data**

Maximum load current	32 A (with 6 mm <sup>2</sup> conductor cross section)
Rated surge voltage	8 kV
Pollution degree	3
Surge voltage category	III
Insulating material group	I
Connection in acc. with standard	IEC 61984
Nominal current I <sub>N</sub>	32 A
Nominal voltage U <sub>N</sub>	800 V
Open side panel	ja

**Connection data**

Conductor cross section solid min.	0.14 mm <sup>2</sup>
Conductor cross section solid max.	6 mm <sup>2</sup>
Conductor cross section stranded min.	0.14 mm <sup>2</sup>
Conductor cross section stranded max.	6 mm <sup>2</sup>
Conductor cross section AWG/kcmil min.	26
Conductor cross section AWG/kcmil max	10
Conductor cross section stranded, with ferrule without plastic sleeve min.	0.14 mm <sup>2</sup>
Conductor cross section stranded, with ferrule without plastic sleeve max.	4 mm <sup>2</sup>
Conductor cross section stranded, with ferrule with plastic sleeve min.	0.14 mm <sup>2</sup>
Conductor cross section stranded, with ferrule with plastic sleeve max.	4 mm <sup>2</sup>
2 conductors with same cross section, solid min.	0.14 mm <sup>2</sup>
2 conductors with same cross section, solid max.	1.5 mm <sup>2</sup>

2 conductors with same cross section, stranded min.	0.14 mm <sup>2</sup>
2 conductors with same cross section, stranded max.	1.5 mm <sup>2</sup>
2 conductors with same cross section, stranded, TWIN ferrules with plastic sleeve, min.	0.5 mm <sup>2</sup>
2 conductors with same cross section, stranded, TWIN ferrules with plastic sleeve, max.	2.5 mm <sup>2</sup>
2 conductors with same cross section, stranded, ferrules without plastic sleeve, min.	0.14 mm <sup>2</sup>
2 conductors with same cross section, stranded, ferrules without plastic sleeve, max.	1.5 mm <sup>2</sup>
Type of connection	Pluggable screw terminal block
Stripping length	9 mm
Internal cylindrical gage	A4
Screw thread	M3
Tightening torque, min	0.6 Nm
Tightening torque max	0.8 Nm

**Certificates / Approvals**



Certification CUL, UL

**CUL**

Nominal voltage $U_N$	600 V
Nominal current $I_N$	30 A
AWG/kcmil	26-10

**UL**

Nominal voltage $U_N$	600 V
Nominal current $I_N$	30 A
AWG/kcmil	26-10

<b>Accessories</b>		
Item	Designation	Description
<b>Assembly</b>		
3047167	ATP-UT	Partition plate, Length: 50 mm, Width: 2 mm, Height: 48 mm, Color: gray
3022276	CLIPFIX 35-5	Snap-on end bracket, for NS 35/7.5 or NS 35/15 DIN rail, can be fitted with Zack strip ZB 5 and ZBF 5, terminal strip marker KLM 2 and KLM, parking facility for FBS...5, FBS...6, KSS 5, KSS 6, width: 5,15 mm, color: gray
3047154	D-UT 2,5/1P	End cover, Length: 47.6 mm, Width: 2.2 mm, Height: 48.4 mm, Color: gray
0801762	NS 35/ 7,5 CU UNPERF 2000MM	DIN rail, material: Copper, unperforated, height 7.5 mm, width 35 mm, length: 2 m
1207640	NS 35/ 7,5 PERF 755MM	NS 35 DIN rail, height 7.5 mm, length 755 mm
1207653	NS 35/ 7,5 PERF 955MM	NS35 DIN rail, height 7.5 mm, length 955 mm
1207666	NS 35/ 7,5 PERF 1155MM	NS 35 DIN rail, height 7.5 mm, length 1155 mm
0801733	NS 35/ 7,5 PERF 2000MM	DIN rail, material: Steel, galvanized and passivated with a thick layer, perforated, height 7.5 mm, width 35 mm, length: 2 m
0801681	NS 35/ 7,5 UNPERF 2000MM	DIN rail, material: Steel, unperforated, height 7.5 mm, width 35 mm, length: 2 m
1201756	NS 35/15 AL UNPERF 2000MM	DIN rail, deep-drawn, high profile, unperforated, 1.5 mm thick, material: Aluminum, height 15 mm, width 35 mm, length 2 m
1201895	NS 35/15 CU UNPERF 2000MM	DIN rail, material: Copper, unperforated, 1.5 mm thick, height 15 mm, width 35 mm, length: 2 m
1207679	NS 35/15 PERF 755MM	NS 35 DIN rail, perforated, height 15 mm, length 755 mm
1207682	NS 35/15 PERF 955MM	NS 35 DIN rail, perforated, height 15 mm, length 955 mm
1207695	NS 35/15 PERF 1155MM	NS 35 DIN rail, perforated, height 15 mm, length 1155 mm
1201730	NS 35/15 PERF 2000MM	DIN rail, material: Steel, perforated, height 15 mm, width 35 mm, length: 2 m
1201714	NS 35/15 UNPERF 2000MM	DIN rail, material: Steel, unperforated, height 15 mm, width 35 mm, length: 2 m
1201798	NS 35/15-2,3 UNPERF 2000MM	DIN rail, material: Steel, unperforated, 2.3 mm thick, height 15 mm, width 35 mm, length: 2 m
<b>Bridges</b>		
3030336	FBS 2-6	Plug-in bridge, Number of positions: 2, Color: red
3030242	FBS 3-6	Plug-in bridge, Number of positions: 3, Color: red
3030255	FBS 4-6	Plug-in bridge, Number of positions: 4, Color: red
3030349	FBS 5-6	Plug-in bridge, Number of positions: 5, Color: red
3030271	FBS 10-6	Plug-in bridge, Number of positions: 10, Color: red

3030365	FBS 20-6	Plug-in bridge, Number of positions: 20, Color: red
3032224	FBS 50-6	Plug-in bridge, Number of positions: 50, Color: red

**Marking**

3040588	PC	Keying star, Length: 3 mm, Width: 3 mm, Height: 6 mm, Color: red
0811228	X-PEN 0,35	Marker pen without ink cartridge, for manual labeling of markers, labeling extremely wipe-proof, line thickness 0.35 mm
1051016	ZB 6,LGS:FORTL.ZAHLEN	Zack marker strip, 10-section, printed horizontally: with the numbers 1 - 10, 11 - 20 and so on up to 491 - 500, color: white
5060935	ZB 6/WH-100:UNBEDRUCKT	Zack strip, unprinted: For individual labeling with M-PEN, ZB-T or CMS system, large batch, sufficient for labeling 1000 terminal blocks, for a terminal width of 6.2 mm, color: White
1051003	ZB 6:UNBEDRUCKT	Zack strip, unprinted, strips with 10 labels for individual labeling with M-PEN or CMS system, for terminal block width: 6.2 mm, color: white

**Plug/Adapter**

0201689	MPS-IH BU	Insulating sleeve, Color: blue
0201676	MPS-IH RD	Insulating sleeve, Color: red
0201663	MPS-IH WH	Insulating sleeve, Color: white
0201744	MPS-MT	Test plugs
3030925	PAI-4	Test adapter, Color: gray
3030996	PS-6	Test adapter, Color: red

**Tools**

1205053	SZS 0,6X3,5	Actuation tool, for ST terminal blocks, insulated, also suitable for use as a bladed screwdriver, size: 0.6 x 3.5 x 100 mm, 2-component grip, with non-slip grip
---------	-------------	--

**Additional products**

Item	Designation	Description
<b>Plug/Adapter</b>		
3060115	UP 4/ 1	Connectors, Type of connection: Screw connection, Screw connection, Number of positions: 1, Cross section: 0.2 mm <sup>2</sup> - 6 mm <sup>2</sup> , AWG 24 - 10, Width: 6.2 mm, Height: 41 mm, Color: gray
3060021	UP 4/ 1-L	Connectors, Type of connection: Screw connection, Screw connection, Number of positions: 1, Cross section: 0.2 mm <sup>2</sup> - 6 mm <sup>2</sup> , AWG 24 - 10, Width: 6.2 mm, Height: 41 mm, Color: gray
3060034	UP 4/ 1-L BU	Connectors, Type of connection: Screw connection, Screw connection, Number of positions: 1, Cross section: 0.2 mm <sup>2</sup> - 6 mm <sup>2</sup> , AWG 24 - 10, Width: 6.2 mm, Height: 41 mm, Color: blue

3060047	UP 4/ 1-L GNYE	Connectors, Type of connection: Screw connection, Screw connection, Number of positions: 1, Cross section: 0.2 mm <sup>2</sup> - 6 mm <sup>2</sup> , AWG 24 - 10, Width: 6.2 mm, Height: 41 mm, Color: green-yellow
3060050	UP 4/ 1-M	Connectors, Type of connection: Screw connection, Screw connection, Number of positions: 1, Cross section: 0.2 mm <sup>2</sup> - 6 mm <sup>2</sup> , AWG 24 - 10, Width: 6.2 mm, Height: 41 mm, Color: gray
3060063	UP 4/ 1-M BU	Connectors, Type of connection: Screw connection, Screw connection, Number of positions: 1, Cross section: 0.2 mm <sup>2</sup> - 6 mm <sup>2</sup> , AWG 24 - 10, Width: 6.2 mm, Height: 41 mm, Color: blue
3060076	UP 4/ 1-M GNYE	Connectors, Type of connection: Screw connection, Screw connection, Number of positions: 1, Cross section: 0.2 mm <sup>2</sup> - 6 mm <sup>2</sup> , AWG 24 - 10, Width: 6.2 mm, Height: 41 mm, Color: green-yellow
3060089	UP 4/ 1-R	Connectors, Type of connection: Screw connection, Screw connection, Number of positions: 1, Cross section: 0.2 mm <sup>2</sup> - 6 mm <sup>2</sup> , AWG 24 - 10, Width: 6.2 mm, Height: 41 mm, Color: gray
3060092	UP 4/ 1-R BU	Connectors, Type of connection: Screw connection, Screw connection, Number of positions: 1, Cross section: 0.2 mm <sup>2</sup> - 6 mm <sup>2</sup> , AWG 24 - 10, Width: 6.2 mm, Height: 41 mm, Color: blue
3060102	UP 4/ 1-R GNYE	Connectors, Type of connection: Screw connection, Screw connection, Number of positions: 1, Cross section: 0.2 mm <sup>2</sup> - 6 mm <sup>2</sup> , AWG 24 - 10, Width: 6.2 mm, Height: 41 mm, Color: green-yellow
3060128	UP 4/ 2	Connectors, Type of connection: Screw connection, Screw connection, Number of positions: 2, Cross section: 0.2 mm <sup>2</sup> - 6 mm <sup>2</sup> , AWG 24 - 10, Width: 12.4 mm, Height: 41 mm, Color: gray
3060131	UP 4/ 3	Connectors, Type of connection: Screw connection, Screw connection, Number of positions: 3, Cross section: 0.2 mm <sup>2</sup> - 6 mm <sup>2</sup> , AWG 24 - 10, Width: 18.6 mm, Height: 41 mm, Color: gray
3060144	UP 4/ 4	Connectors, Type of connection: Screw connection, Screw connection, Number of positions: 4, Cross section: 0.2 mm <sup>2</sup> - 6 mm <sup>2</sup> , AWG 24 - 10, Width: 24.8 mm, Height: 41 mm, Color: gray
3060157	UP 4/ 5	Connectors, Type of connection: Screw connection, Screw connection, Number of positions: 5, Cross section: 0.2 mm <sup>2</sup> - 6 mm <sup>2</sup> , AWG 24 - 10, Width: 31 mm, Height: 41 mm, Color: gray
3060160	UP 4/ 6	Connectors, Type of connection: Screw connection, Screw connection, Number of positions: 6, Cross section: 0.2 mm <sup>2</sup> - 6 mm <sup>2</sup> , AWG 24 - 10, Width: 37.2 mm, Height: 41 mm, Color: gray
3060173	UP 4/ 7	Connectors, Type of connection: Screw connection, Screw connection, Number of positions: 7, Cross section: 0.2 mm <sup>2</sup> - 6 mm <sup>2</sup> , AWG 24 - 10, Width: 43.4 mm, Height: 41 mm, Color: gray
3060186	UP 4/ 8	Connectors, Type of connection: Screw connection, Screw connection, Number of positions: 8, Cross section: 0.2 mm <sup>2</sup> - 6 mm <sup>2</sup> , AWG 24 - 10, Width: 49.6 mm, Height: 41 mm, Color: gray
3060199	UP 4/ 9	Connectors, Type of connection: Screw connection, Screw connection, Number of positions: 9, Cross section: 0.2 mm <sup>2</sup> - 6 mm <sup>2</sup> , AWG 24 - 10, Width: 55.8 mm, Height: 41 mm, Color: gray

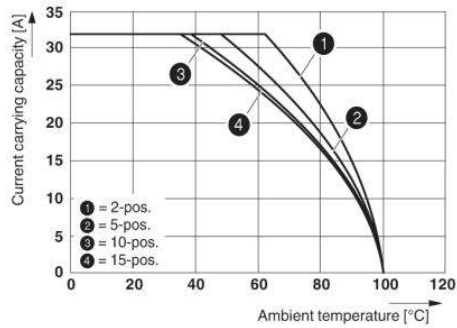
3060209	UP 4/10	Connectors, Type of connection: Screw connection, Screw connection, Number of positions: 10, Cross section: 0.2 mm <sup>2</sup> - 6 mm <sup>2</sup> , AWG 24 - 10, Width: 62 mm, Height: 41 mm, Color: gray
3060212	UP 4/11	Connectors, Type of connection: Screw connection, Screw connection, Number of positions: 11, Cross section: 0.2 mm <sup>2</sup> - 6 mm <sup>2</sup> , AWG 24 - 10, Width: 68.2 mm, Height: 41 mm, Color: gray
3060225	UP 4/12	Connectors, Type of connection: Screw connection, Screw connection, Number of positions: 12, Cross section: 0.2 mm <sup>2</sup> - 6 mm <sup>2</sup> , AWG 24 - 10, Width: 74.4 mm, Height: 41 mm, Color: gray
3060238	UP 4/13	Connectors, Type of connection: Screw connection, Screw connection, Number of positions: 13, Cross section: 0.2 mm <sup>2</sup> - 6 mm <sup>2</sup> , AWG 24 - 10, Width: 80.6 mm, Height: 41 mm, Color: gray
3060241	UP 4/14	Connectors, Type of connection: Screw connection, Screw connection, Number of positions: 14, Cross section: 0.2 mm <sup>2</sup> - 6 mm <sup>2</sup> , AWG 24 - 10, Width: 86.8 mm, Height: 41 mm, Color: gray
3060254	UP 4/15	Connectors, Type of connection: Screw connection, Screw connection, Number of positions: 15, Cross section: 0.2 mm <sup>2</sup> - 6 mm <sup>2</sup> , AWG 24 - 10, Width: 93 mm, Height: 41 mm, Color: gray
3045800	UPBV 4/ 1	Connectors, Type of connection: Screw connection, Screw connection, Number of positions: 1, Cross section: 0.14 mm <sup>2</sup> - 6 mm <sup>2</sup> , AWG 26 - 10, Width: 6.2 mm, Height: 47 mm, Color: gray
3045716	UPBV 4/ 1-L	Connectors, Type of connection: Screw connection, Screw connection, Number of positions: 1, Cross section: 0.14 mm <sup>2</sup> - 6 mm <sup>2</sup> , AWG 26 - 10, Width: 6.2 mm, Height: 47 mm, Color: gray
3045729	UPBV 4/ 1-L BU	Connectors, Type of connection: Screw connection, Screw connection, Number of positions: 1, Cross section: 0.14 mm <sup>2</sup> - 6 mm <sup>2</sup> , AWG 26 - 10, Width: 6.2 mm, Height: 47 mm, Color: blue
3045732	UPBV 4/ 1-L GNYE	Connectors, Type of connection: Screw connection, Screw connection, Number of positions: 1, Cross section: 0.14 mm <sup>2</sup> - 6 mm <sup>2</sup> , AWG 26 - 10, Width: 6.2 mm, Height: 47 mm, Color: green-yellow
3045745	UPBV 4/ 1-M	Connectors, Type of connection: Screw connection, Screw connection, Number of positions: 1, Cross section: 0.14 mm <sup>2</sup> - 6 mm <sup>2</sup> , AWG 26 - 10, Width: 6.2 mm, Height: 47 mm, Color: gray
3045758	UPBV 4/ 1-M BU	Connectors, Type of connection: Screw connection, Screw connection, Number of positions: 1, Cross section: 0.14 mm <sup>2</sup> - 6 mm <sup>2</sup> , AWG 26 - 10, Width: 6.2 mm, Height: 47 mm, Color: blue
3045761	UPBV 4/ 1-M GNYE	Connectors, Type of connection: Screw connection, Screw connection, Number of positions: 1, Cross section: 0.14 mm <sup>2</sup> - 6 mm <sup>2</sup> , AWG 26 - 10, Width: 6.2 mm, Height: 47 mm, Color: green-yellow
3045774	UPBV 4/ 1-R	Connectors, Type of connection: Screw connection, Screw connection, Number of positions: 1, Cross section: 0.14 mm <sup>2</sup> - 6 mm <sup>2</sup> , AWG 26 - 10, Width: 6.2 mm, Height: 47 mm, Color: gray
3045787	UPBV 4/ 1-R BU	Connectors, Type of connection: Screw connection, Screw connection, Number of positions: 1, Cross section: 0.14 mm <sup>2</sup> - 6 mm <sup>2</sup> , AWG 26 - 10, Width: 6.2 mm, Height: 47 mm, Color: blue

3045790	UPBV 4/ 1-R GNYE	Connectors, Type of connection: Screw connection, Screw connection, Number of positions: 1, Cross section: 0.14 mm <sup>2</sup> - 6 mm <sup>2</sup> , AWG 26 - 10, Width: 6.2 mm, Height: 47 mm, Color: green-yellow
3045813	UPBV 4/ 2	Connectors, Type of connection: Screw connection, Screw connection, Number of positions: 2, Cross section: 0.14 mm <sup>2</sup> - 6 mm <sup>2</sup> , AWG 26 - 10, Width: 12.4 mm, Height: 47 mm, Color: gray
3045826	UPBV 4/ 3	Connectors, Type of connection: Screw connection, Screw connection, Number of positions: 3, Cross section: 0.14 mm <sup>2</sup> - 6 mm <sup>2</sup> , AWG 26 - 10, Width: 18.6 mm, Height: 47 mm, Color: gray
3045839	UPBV 4/ 4	Connectors, Type of connection: Screw connection, Screw connection, Number of positions: 4, Cross section: 0.14 mm <sup>2</sup> - 6 mm <sup>2</sup> , AWG 26 - 10, Width: 24.8 mm, Height: 47 mm, Color: gray
3045842	UPBV 4/ 5	Connectors, Type of connection: Screw connection, Screw connection, Number of positions: 5, Cross section: 0.14 mm <sup>2</sup> - 6 mm <sup>2</sup> , AWG 26 - 10, Width: 31 mm, Height: 47 mm, Color: gray
3045855	UPBV 4/ 6	Connectors, Type of connection: Screw connection, Screw connection, Number of positions: 6, Cross section: 0.14 mm <sup>2</sup> - 6 mm <sup>2</sup> , AWG 26 - 10, Width: 37.2 mm, Height: 47 mm, Color: gray
3045868	UPBV 4/ 7	Connectors, Type of connection: Screw connection, Screw connection, Number of positions: 7, Cross section: 0.14 mm <sup>2</sup> - 6 mm <sup>2</sup> , AWG 26 - 10, Width: 43.4 mm, Height: 47 mm, Color: gray
3045871	UPBV 4/ 8	Connectors, Type of connection: Screw connection, Screw connection, Number of positions: 8, Cross section: 0.14 mm <sup>2</sup> - 6 mm <sup>2</sup> , AWG 26 - 10, Width: 49.6 mm, Height: 47 mm, Color: gray
3045884	UPBV 4/ 9	Connectors, Type of connection: Screw connection, Screw connection, Number of positions: 9, Cross section: 0.14 mm <sup>2</sup> - 6 mm <sup>2</sup> , AWG 26 - 10, Width: 55.8 mm, Height: 47 mm, Color: gray
3045897	UPBV 4/10	Connectors, Type of connection: Screw connection, Screw connection, Number of positions: 10, Cross section: 0.14 mm <sup>2</sup> - 6 mm <sup>2</sup> , AWG 26 - 10, Width: 62 mm, Height: 47 mm, Color: gray
3045907	UPBV 4/11	Connectors, Type of connection: Screw connection, Screw connection, Number of positions: 11, Cross section: 0.14 mm <sup>2</sup> - 6 mm <sup>2</sup> , AWG 26 - 10, Width: 68.2 mm, Height: 47 mm, Color: gray
3045910	UPBV 4/12	Connectors, Type of connection: Screw connection, Screw connection, Number of positions: 12, Cross section: 0.14 mm <sup>2</sup> - 6 mm <sup>2</sup> , AWG 26 - 10, Width: 74.4 mm, Height: 47 mm, Color: gray
3045923	UPBV 4/13	Connectors, Type of connection: Screw connection, Screw connection, Number of positions: 13, Cross section: 0.14 mm <sup>2</sup> - 6 mm <sup>2</sup> , AWG 26 - 10, Width: 80.6 mm, Height: 47 mm, Color: gray
3045936	UPBV 4/14	Connectors, Type of connection: Screw connection, Screw connection, Number of positions: 14, Cross section: 0.14 mm <sup>2</sup> - 6 mm <sup>2</sup> , AWG 26 - 10, Width: 86.8 mm, Height: 47 mm, Color: gray
3045949	UPBV 4/15	Connectors, Type of connection: Screw connection, Screw connection, Number of positions: 15, Cross section: 0.14 mm <sup>2</sup> - 6 mm <sup>2</sup> , AWG 26 - 10, Width: 93 mm, Height: 47 mm, Color: gray



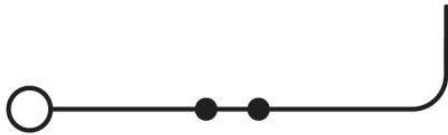
## Diagrams/Drawings

### Diagram



The figure shows the derating curve of the UT 4/1P... terminal block in connection with the UPVB 4 connector

### Circuit diagram



**Address**

PHOENIX CONTACT Inc., USA  
586 Fulling Mill Road  
Middletown, PA 17057, USA  
Phone (800) 888-7388  
Fax (717) 944-1625  
<http://www.phoenixcon.com>



© 2010 Phoenix Contact  
Technical modifications reserved;