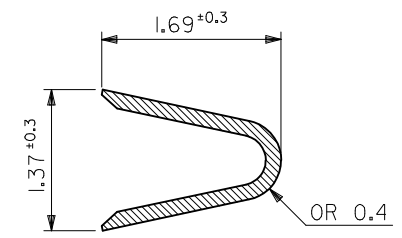
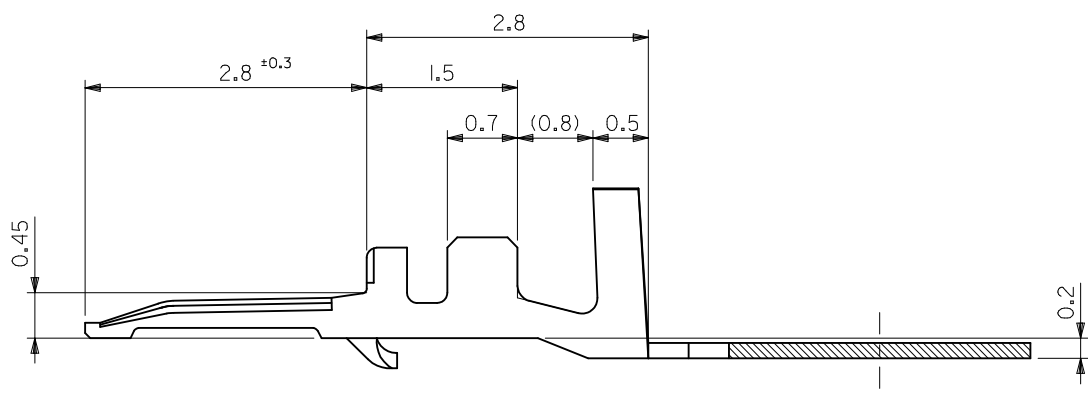
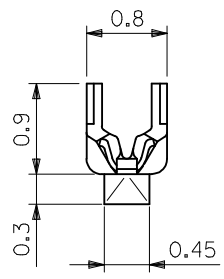


SECT. Z-Z



SECT. Y-Y



注記  
NOTES

- 適合ハウジング：51022 シリーズ  
APPLICABLE HOUSING：51022 SERIES
- メッキ仕様 PLATING  
錫 0.9μm MIN. リフロー処理 (前メッキ)  
TIN 0.9μm MIN. REFLOW TREATMENT (PRE-PLATED)

50061-8000	連鎖状 CHAIN
ENG. NO.	端子形状 FORM

材料 MATERIAL	リン青銅 PHOSPHOR BRONZE (t=0.15)
仕上げ FINISH	—
適用電線範囲 WIRE RANGE	AWG #28-32
被覆外径 INS. RANGE	Ø 0.5-1.0

REVISED	EC NO: J2017-0317	2017/02/09	2017/03/15
DRMNGES	CHKD:	APPR: MSASAO	
DESCRIPTION			
REV			

GENERAL TOLERANCES (UNLESS SPECIFIED)	
0.25 UNDER	±0.03
0.25 OVER 0.5 UNDER	±0.05
0.5 OVER 1.0 UNDER	±0.1
1.0 OVER 3.0 UNDER	±0.2
3.0 OVER	±0.25
ANGULAR	±3 °
DRAFT WHERE APPLICABLE MUST REMAIN WITHIN DIMENSIONS	

DIMENSION STYLE MM ONLY	
DRAWN BY	DATE
H.HIRAMOTO	1992/10/22
CHECKED BY	DATE
H.HIRAMOTO	1992/10/22
APPROVED BY	DATE
H.FUKUSHIMA	1993/07/12
MATERIAL NO.	
SEE CHART	
SIZE	A3

SCALE	DESIGN UNITS	THIRD ANGLE PROJECTION
20:1	METRIC	◎ □
TITLE		
1.25 WIRE TO BOARD TERM. NAL		
DOCUMENT NO.		SHEET NO.
SD-50061-8*00		1 OF 1
THIS DRAWING CONTAINS INFORMATION THAT IS PROPRIETARY TO MOLEX ELECTRONIC TECHNOLOGIES, LLC AND SHOULD NOT BE USED WITHOUT WRITTEN PERMISSION		

