

RIGHT ANGLE RECEPTACLE ASSEMBLY PRODUCT NUMBER  
10108888- X PP SS C M LF

MOUNTING FEATURES  
H = HOLD DOWNS  
S = SCREW MOUNT (EXCEPT FOR P STYLE)

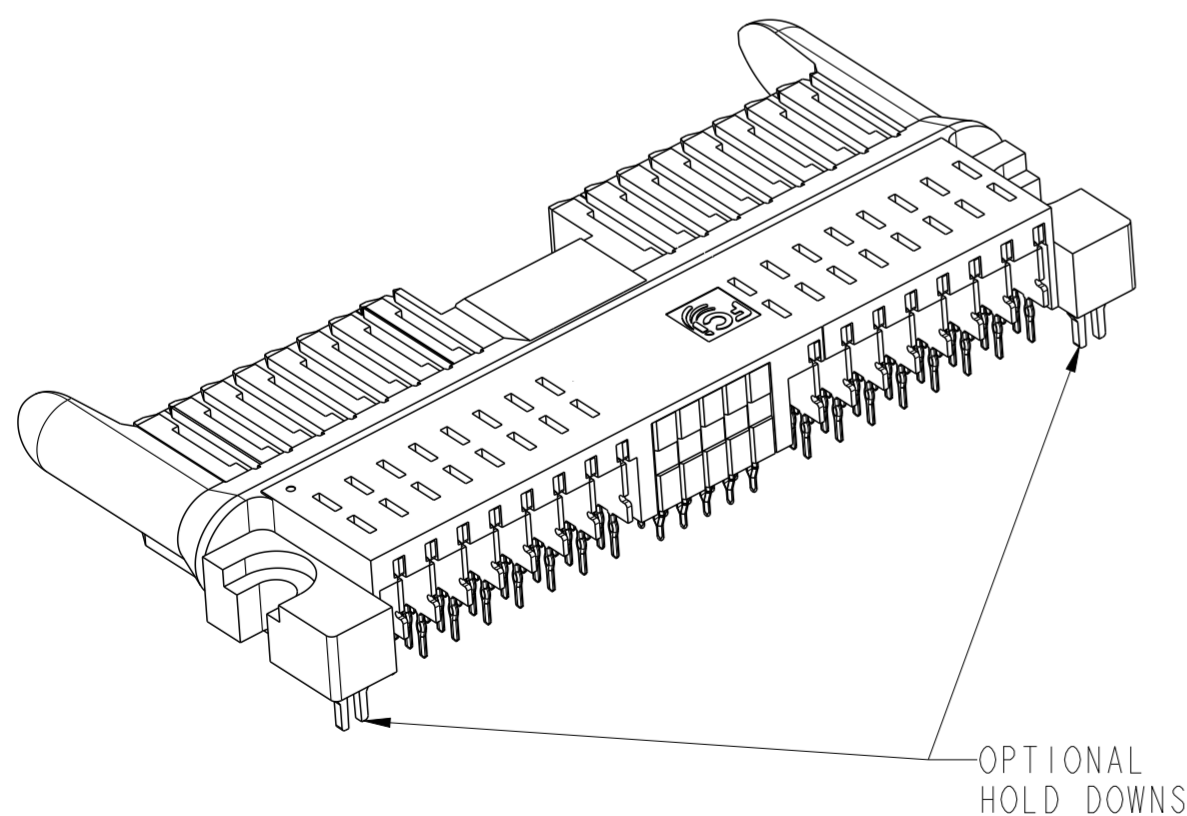
CENTER LINE DISTANCE BETWEEN POWER AND SIGNAL POSITIONS AT MATING SURFACE:  
3 = 4.375

NUMBER OF SIGNAL CONTACTS  
00 OR 10 TO 40 IN INCREMENTS OF 5

TOTAL NUMBER OF POWER CONTACTS. IF STYLE S, THEY WILL BE DIVIDED EQUALLY WITH HALF ON THE LEFT AND HALF ON THE RIGHT SIDES OF THE SIGNAL GROUP. 02 TO 24 IN EVEN NUMBER INCREMENTS. IF STYLE P, THE RANGE IS 06 TO 30.

STYLE  
P = POWER ONLY-NO SIGNAL  
L = SIGNAL ON THE LEFT, POWER ON THE RIGHT  
R = POWER ON THE LEFT, SIGNAL ON THE RIGHT  
S = POWER ON THE LEFT, SIGNAL IN THE CENTER, POWER ON THE RIGHT

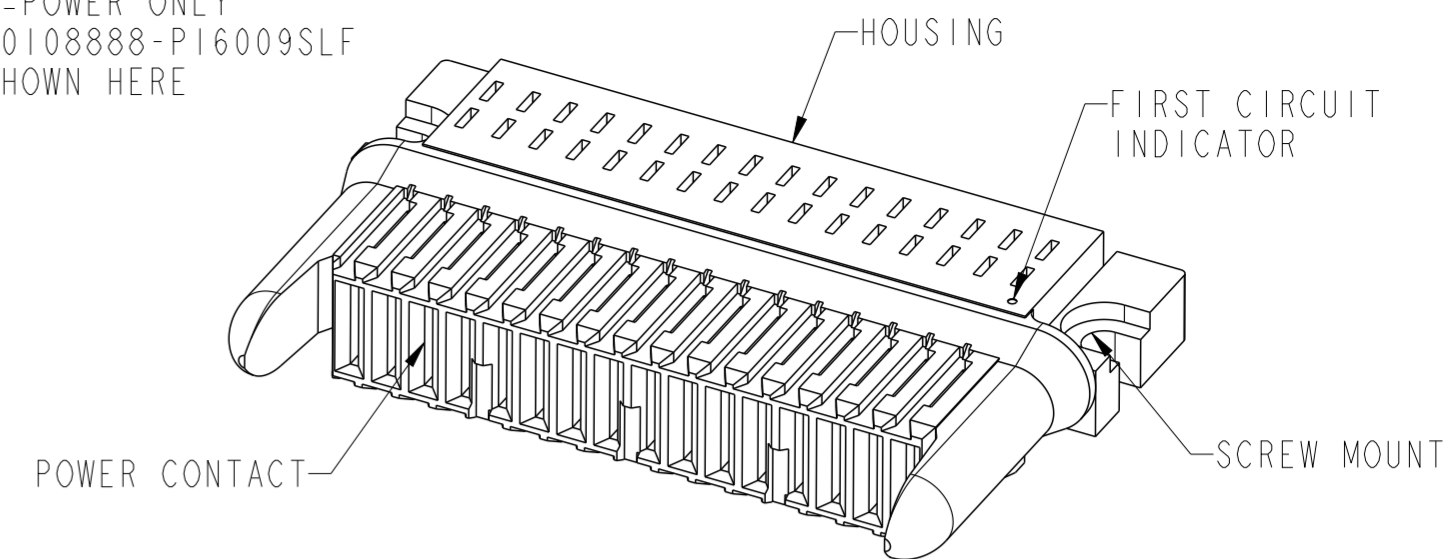
EXAMPLE:  
10108888-R10253SLF IS A RIGHT ANGLE RECEPTACLE ASSEMBLY WITH 5 COLUMNS (25 TOTAL) OF SIGNAL PINS ON THE LEFT SIDE AND 10 POWER CONTACTS ON THE RIGHT SIDE, WITH A 4.375 DISTANCE BETWEEN THE SIGNAL AND THE POWER CONTACTS AND WITH SCREW MOUNT ENDS.



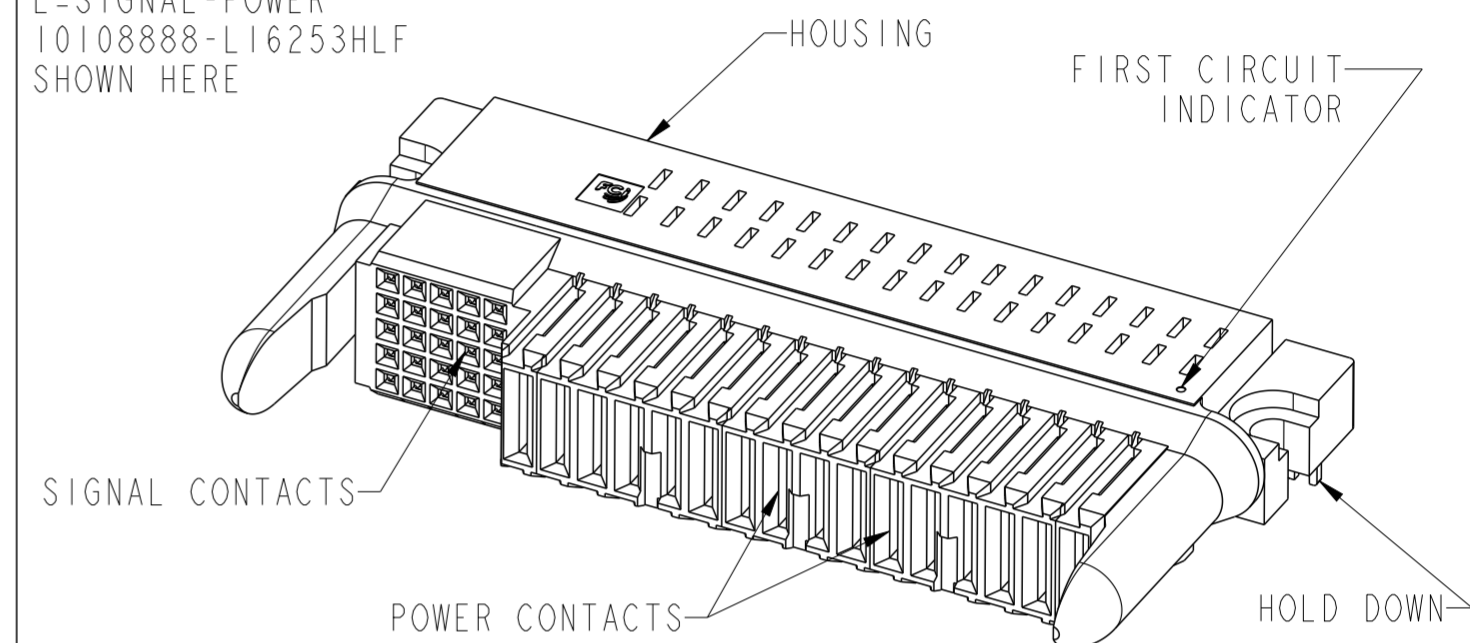
OPTIONAL HOLD DOWNS

# MOUNTING FEATURES

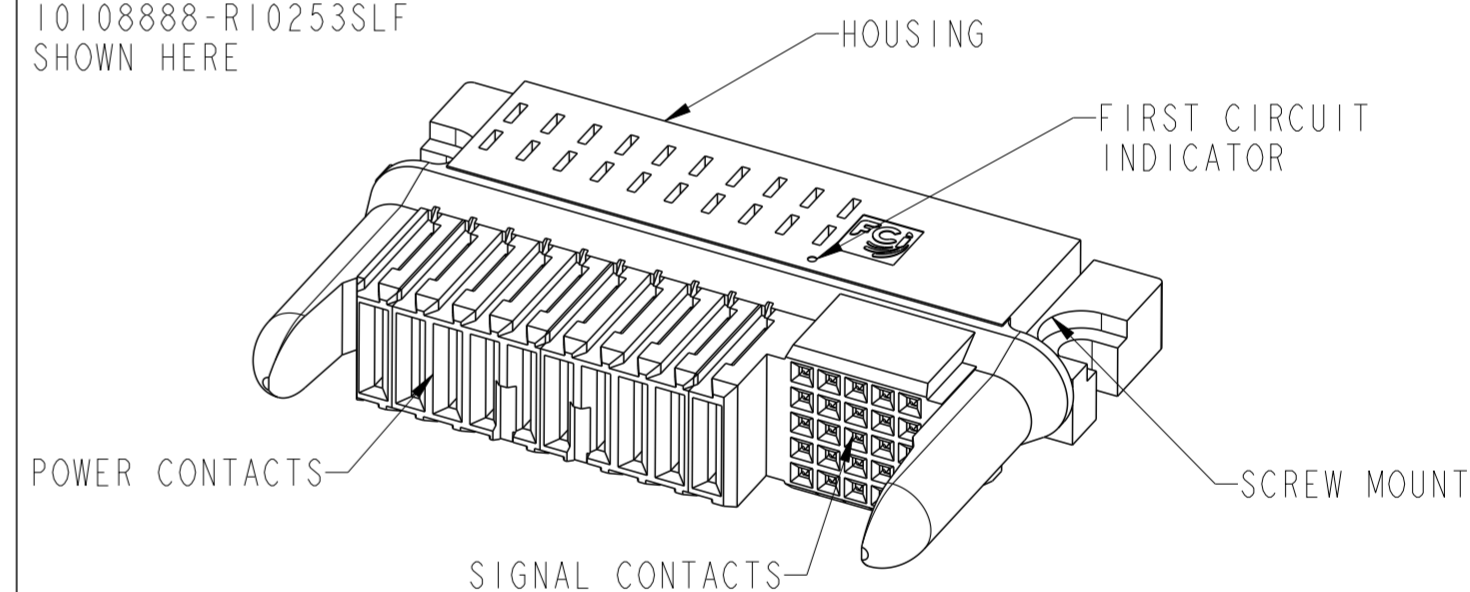
P=POWER ONLY  
10108888-PI6009SLF  
SHOWN HERE



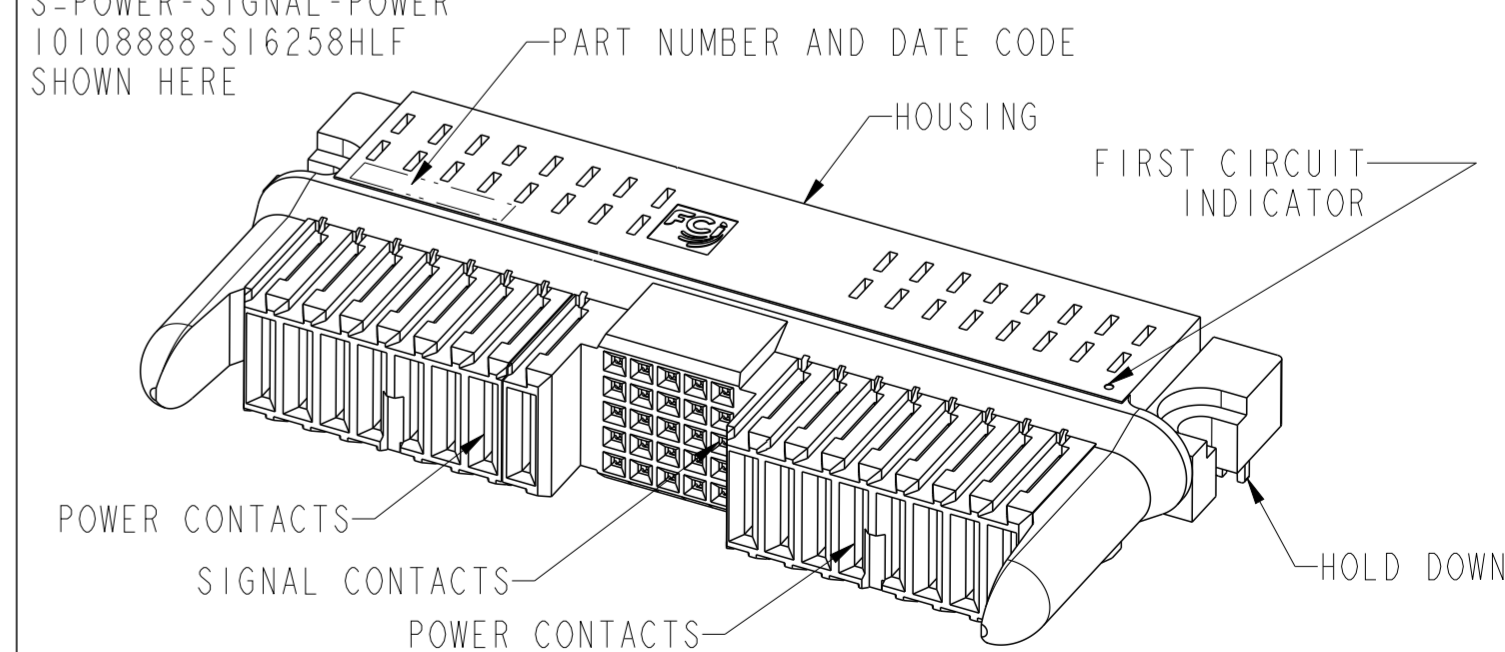
L=SIGNAL-POWER  
10108888-LI6253HLF  
SHOWN HERE



R=POWER-SIGNAL  
10108888-R10253SLF  
SHOWN HERE

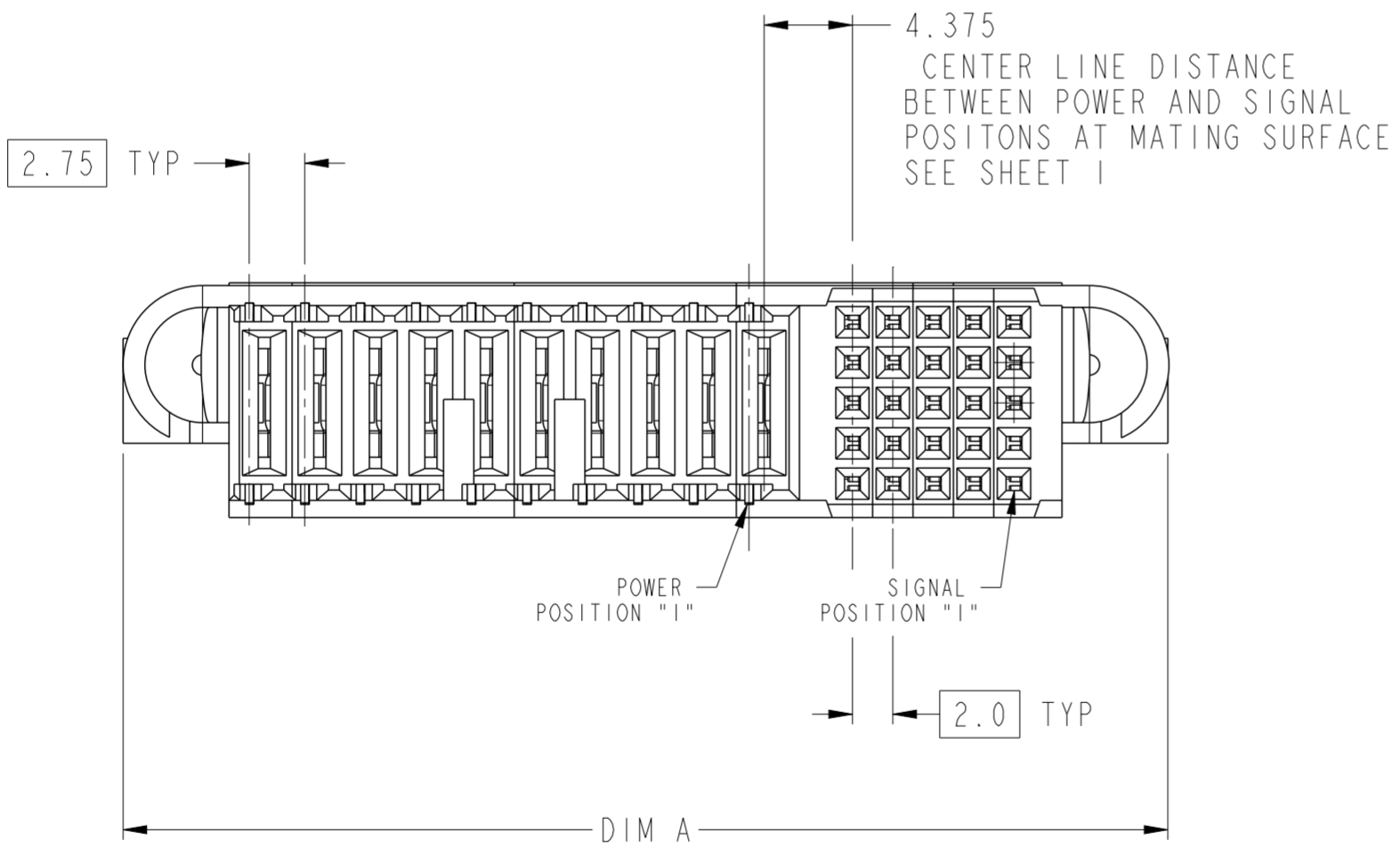
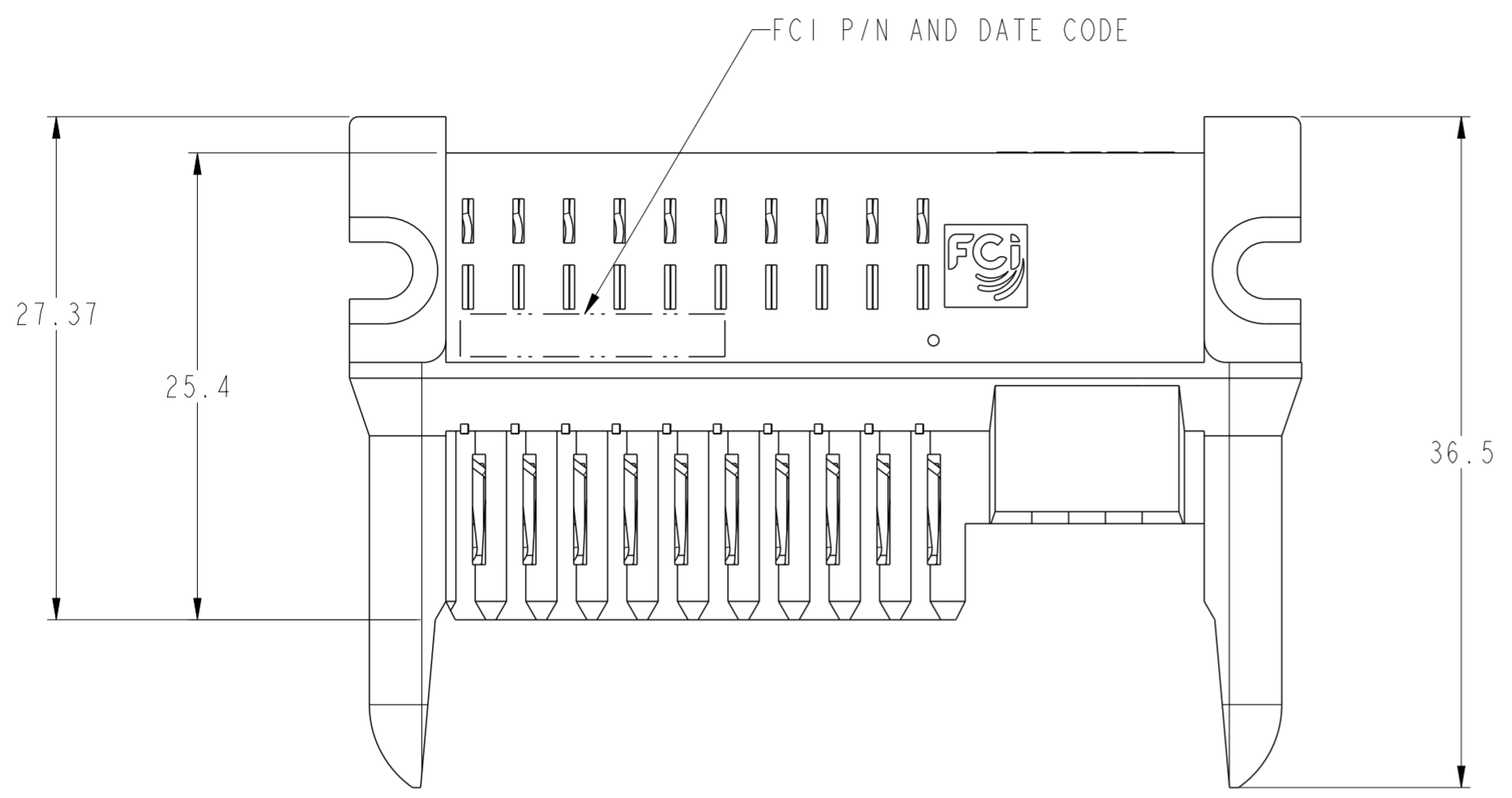


S=POWER-SIGNAL-POWER  
10108888-SI6258HLF  
SHOWN HERE



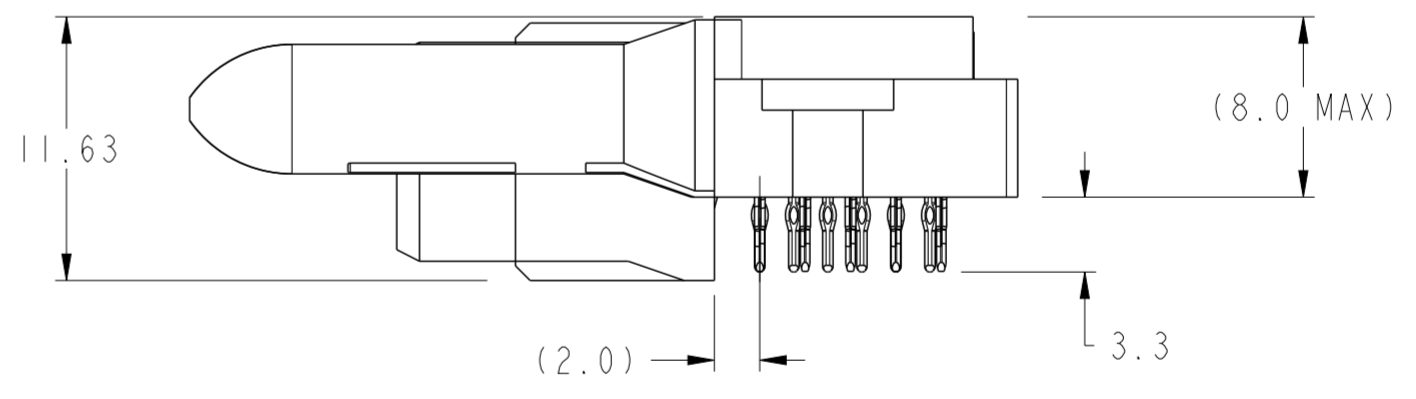
# STYLE

spec ref	-	dr	Zhang Hong-Tu	2012/07/04	projection	MM	size	A2	scale	1:1
tolerance std	ASME Y14.5	eng	Heaven Cen	2014/03/02			ecn no	ELX-DG-17027-1	rel level	Released
TOLERANCES UNLESS OTHERWISE SPECIFIED		chr	Jon Qin	2014/03/02						
		appr	Collins Lu	2014/03/02						
surface	linear	0.X	±0.30		product family PwrLoPro	title PWR LP RECEPTACLE ASSEMBLY RA, PASSIVE GUIDE	dwg no 10108888	rev H	ASME Y14.5	angular 0° ±2°
		0.XX	±0.20							
		0.XXX	±0.10							
		www.fci.com		cat. no.	Product - Customer Drw		sheet 1 of 7			



10108888-R10253SLF AS SHOWN  
SCREW MOUNT TYPE

PART NUMBER	CONFIGURATION	DIM "A"	DIM "B"	"C" SPACES	"D" SPACES	"E" PLACES	"F" PLACES	MOUNTING FEATURE
10108888-R10253SLF	10P + 25S	51.74	47.94	4	9	25	60	SCREW MOUNT
10108888-R08253SLF	08P + 25S	46.24	42.44	4	7	25	48	SCREW MOUNT
10108888-R18353SLF	18P + 35S	77.74	73.94	6	17	35	108	SCREW MOUNT
10108888-R20353SLF	20P + 35S	83.24	79.44	6	19	35	120	SCREW MOUNT
10108888-R24403SLF	24P + 40S	96.24	92.44	7	23	40	144	SCREW MOUNT



spec ref	-	dr	Zhang Hong-Tu	2012/07/04	projection	MM	size	A2	scale	1:1	
tolerance std	ASME Y14.5	eng	Heaven Cen	2014/03/02			ecn no	ELX-DG-17027-1			
TOLERANCES UNLESS OTHERWISE SPECIFIED		chr	Jon Qin	2014/03/02			rel level	Released			
surface	✓	appr	Collins Lu	2014/03/02			product family	PwrLoPro	rel level	Released	
linear	0.X ±0.30	FCI		title		PWR LP RECEPTACLE ASSEMBLY		dwg no	10108888		
	0.XX ±0.20	www.fci.com		RA, PASSIVE GUIDE		cat. no.		Product - Customer Drw		rev	H
	0.XXX ±0.10									sheet 2 of 7	
angular	0° ±2°										

FOR SCREW MOUNT  
2X  $\varnothing 3.05 \pm 0.05$   
 $\varnothing 0.05 \text{ M } Z X Y$   
SEE NOTE 5

F-  $\varnothing X$  PLC  
 $\varnothing 0.05 \text{ M } Z X Y$   
SEE NOTE 6

E-  $\varnothing X$  PLC  
 $\varnothing 0.05 \text{ M } Z X Y$   
SEE NOTE 6

KEEP OUT AREA

5X 1.50

12.87

4.345

D SPACE @ 2.75

5.125

C SPACE @ 2.00

2x 5.25

1.97

4X 2.00

2X 4.50

1.50

BASIC  
AS REQUIRED

POWER POSITION "I"

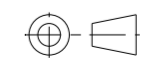
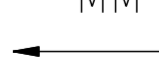

SIGNAL POSITION "AI"

DIM. A  $\pm 0.10$

DIM. B

10108888-R10253SLF SHOWN  
RECOMMENDED PRINTED CIRCUIT BOARD LAYOUT SEE NOTE 4  
FOR 10108888-RXXXX3SLF  
(AS VIEWED FROM COMPONENT SIDE)

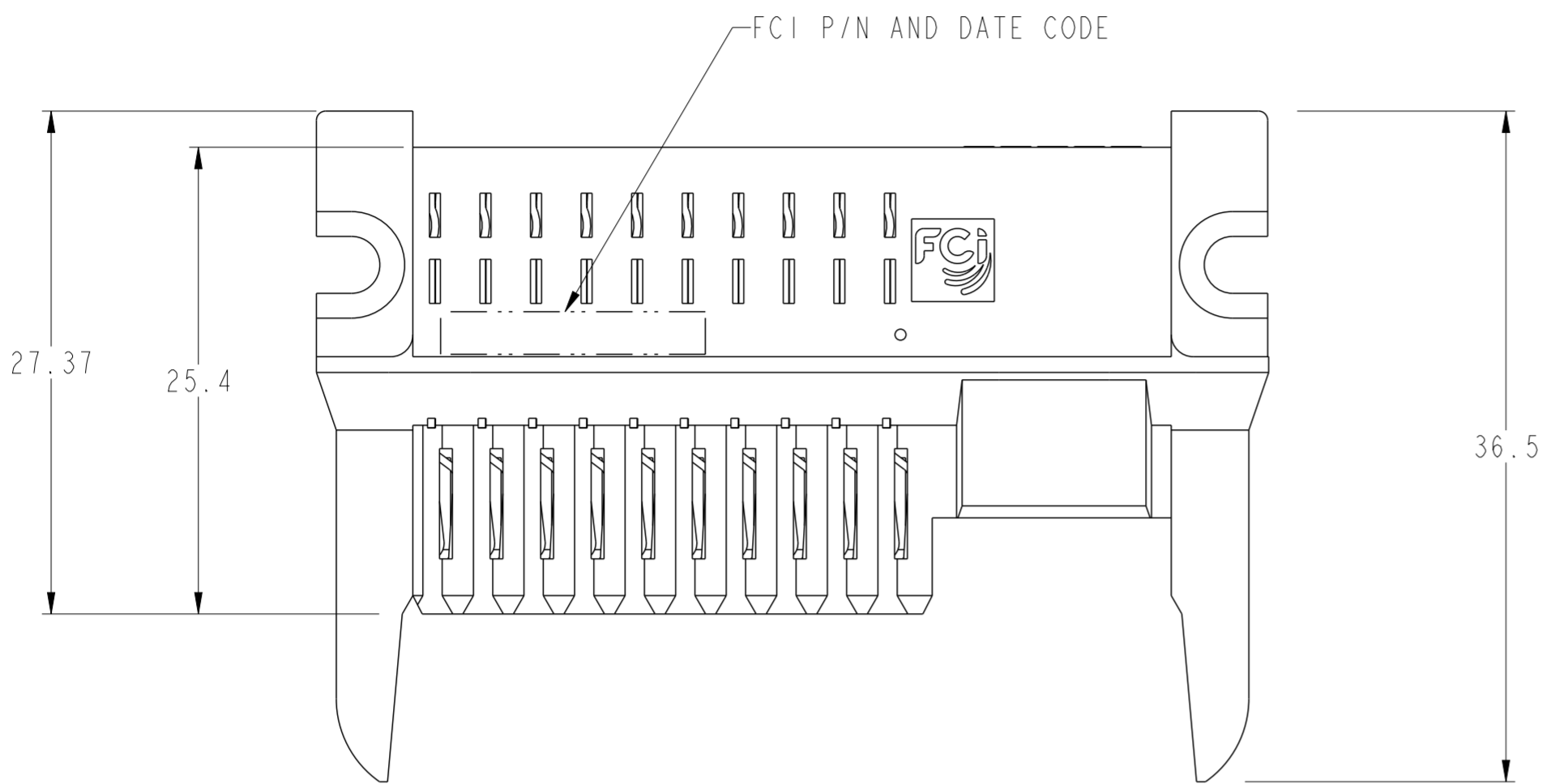
Copyright FCI.

spec ref	-	dr	Zhang Hong-Tu	2012/07/04	projection	MM	size	A2	scale	1:1																						
tolerance std	ASME Y14.5	eng	Heaven Cen	2014/03/02			ecn no	ELX-DG-17027-1	rel level	Released																						
TOLERANCES UNLESS OTHERWISE SPECIFIED		chr	Jon Qin	2014/03/02																												
		appr	Collins Lu	2014/03/02																												
surface	<table border="1"> <tr> <td>linear</td> <td>0.X</td> <td><math>\pm 0.30</math></td> </tr> <tr> <td></td> <td>0.XX</td> <td><math>\pm 0.20</math></td> </tr> <tr> <td></td> <td>0.XXX</td> <td><math>\pm 0.10</math></td> </tr> <tr> <td>angular</td> <td>0°</td> <td><math>\pm 2^\circ</math></td> </tr> </table>	linear	0.X	$\pm 0.30$		0.XX	$\pm 0.20$		0.XXX	$\pm 0.10$	angular	0°	$\pm 2^\circ$			product family	PwrLoPro	rel level	Released	<table border="1"> <tr> <td>title</td> <td>PWR LP RECEPTACLE ASSEMBLY</td> <td>dwg no</td> <td>10108888</td> <td>rev</td> <td>H</td> </tr> <tr> <td></td> <td>RA, PASSIVE GUIDE</td> <td></td> <td></td> <td></td> <td></td> </tr> </table>	title	PWR LP RECEPTACLE ASSEMBLY	dwg no	10108888	rev	H		RA, PASSIVE GUIDE				
linear	0.X	$\pm 0.30$																														
	0.XX	$\pm 0.20$																														
	0.XXX	$\pm 0.10$																														
angular	0°	$\pm 2^\circ$																														
title	PWR LP RECEPTACLE ASSEMBLY	dwg no	10108888	rev	H																											
	RA, PASSIVE GUIDE																															
ASME Y14.5		www.fci.com	cat. no.	-	Product - Customer Drw	sheet 3 of 7																										

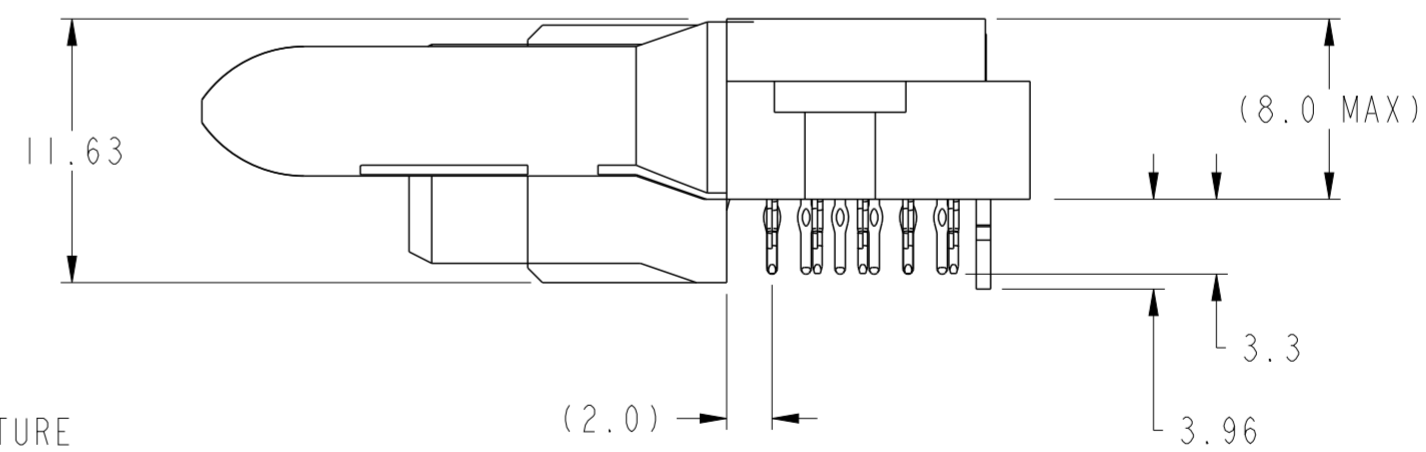
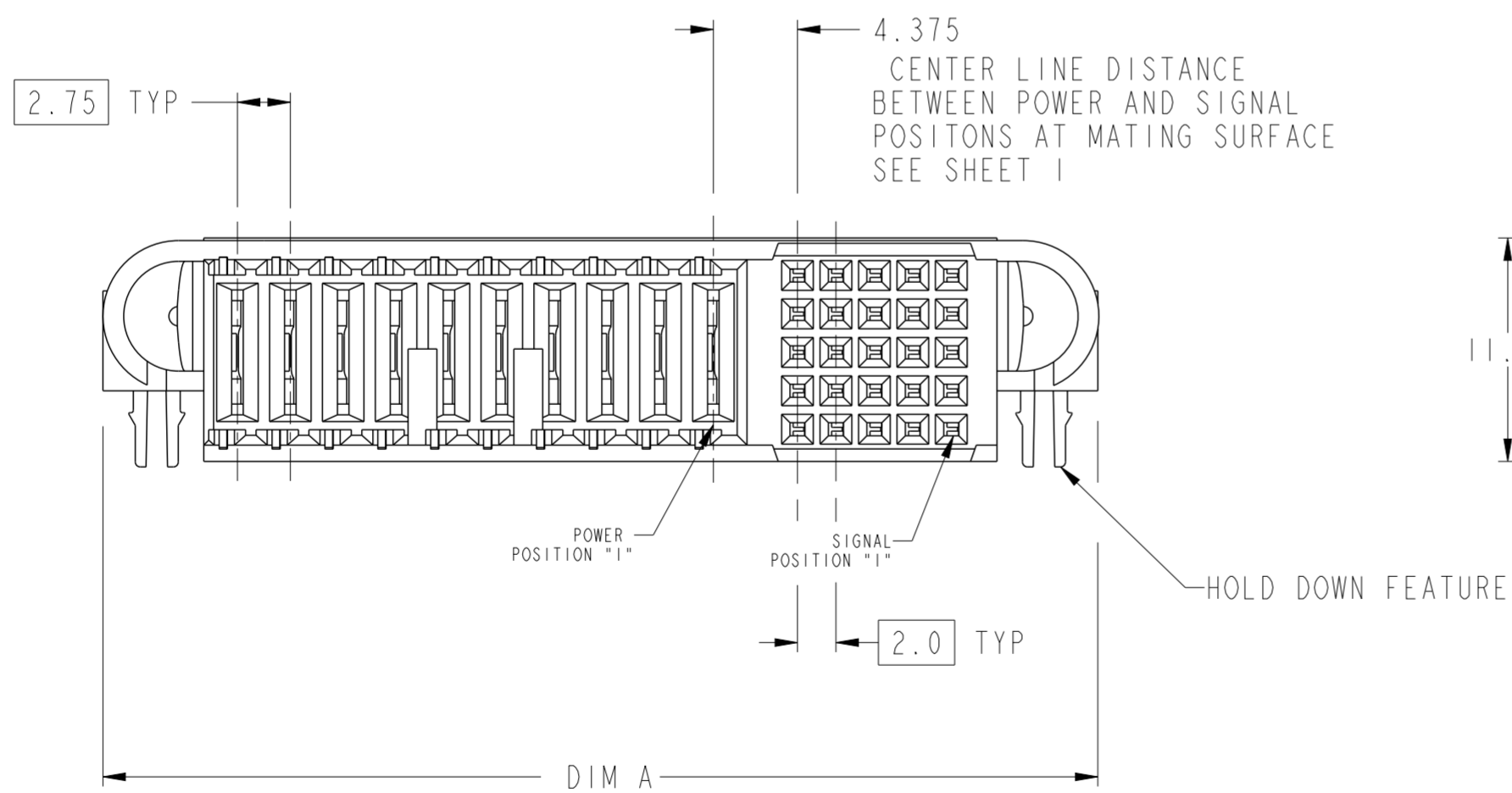
PDS: Rev :H

STATUS:Released

Printed: Mar 03, 2014



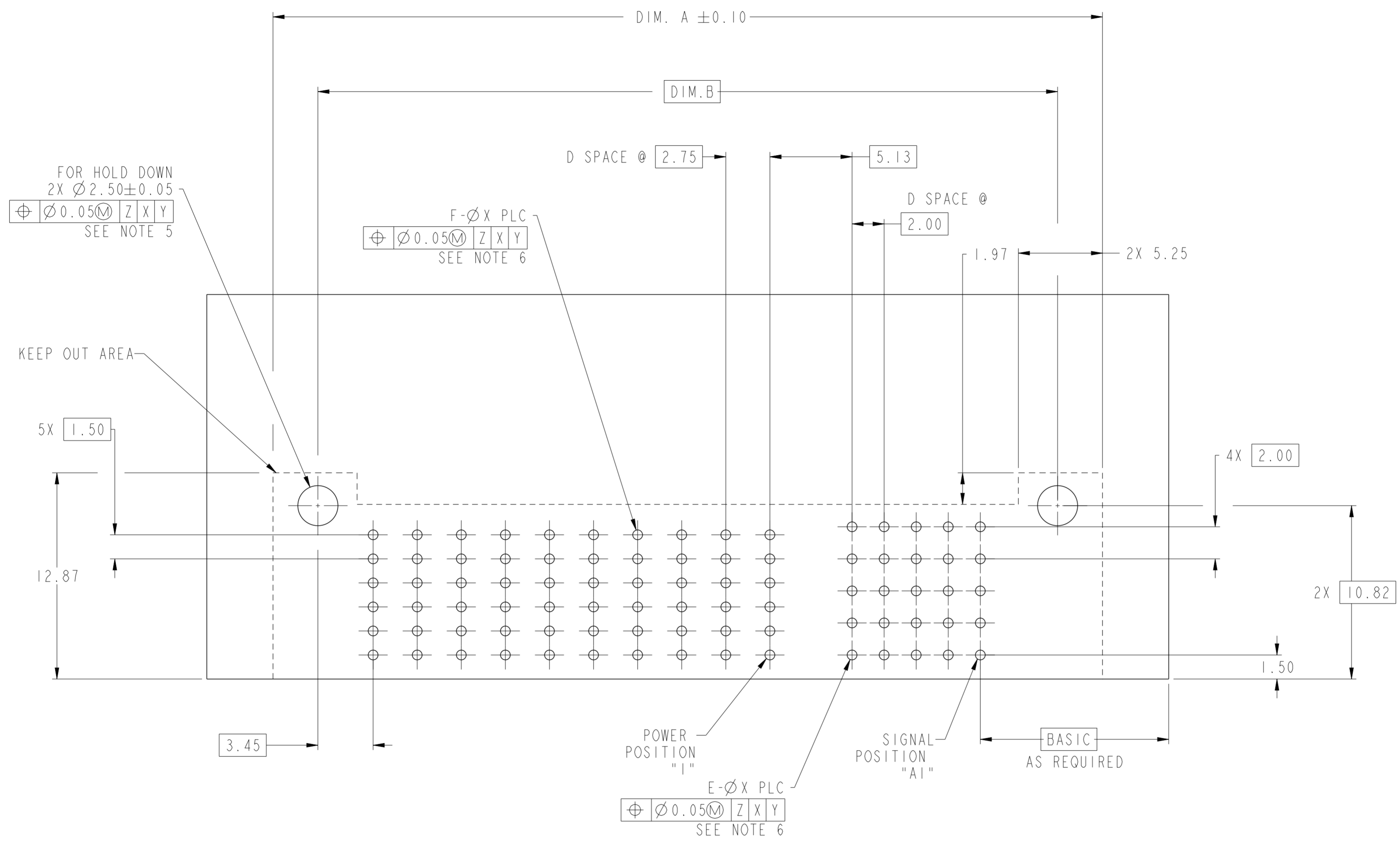
PART NUMBER	CONFIGURATION	DIM "A"	DIM "B"	"C" SPACES	"D" SPACES	"E" PLACES	"F" PLACES	MOUNTING FEATURE
10108888-R10253HLF	10P + 25S	51.74	46.14	4	9	25	60	HOLD DOWN
10108888-R08253HLF	08P + 25S	46.24	40.64	4	7	25	48	HOLD DOWN
10108888-R18353HLF	18P + 35S	77.74	72.14	6	17	35	108	HOLD DOWN
10108888-R20353HLF	20P + 35S	83.24	77.64	6	19	35	120	HOLD DOWN
10108888-R24403HLF	24P + 40S	96.24	90.64	7	23	40	144	HOLD DOWN



10108888-R10253HLF AS SHOWN  
HOLD DOWN TYPE

spec ref	-	dr	Zhang Hong-Tu	2012/07/04	projection	MM	size	A2	scale	1:1	
tolerance std	ASME Y14.5	eng	Heaven Cen	2014/03/02			ecn no	ELX-DG-17027-1			
TOLERANCES UNLESS OTHERWISE SPECIFIED		chr	Jon Qin	2014/03/02			rel level	Released			
surface	✓	appr	Collins Lu	2014/03/02			product family				
ASME Y14.5	linear	0.X	±0.30		title		PWR LP RECEPTACLE ASSEMBLY	dwg no 10108888	rev H	Product - Customer Drw sheet 4 of 7	
		0.XX	±0.20		www.fci.com		cat. no.				
	angular	0°	±2°		PDS: Rev :H		STATUS:Released				Printed: Mar 03, 2014

Copyright FCI.



10108888-R10253HLF SHOWN  
 RECOMMENDED PRINTED CIRCUIT BOARD LAYOUT SEE NOTE 4  
 FOR 10108888-RXXXX3HLF  
 (AS VIEWED FROM COMPONENT SIDE)

spec ref	-	dr	Zhang Hong-Tu	2012/07/04	projection	MM	size	A2	scale	1:1	
tolerance std	ASME Y14.5	eng	Heaven Cen	2014/03/02			ecn no	ELX-DG-17027-1	rel level	Released	
TOLERANCES UNLESS OTHERWISE SPECIFIED		chr	Jon Qin	2014/03/02							
		appr	Collins Lu	2014/03/02							
surface	✓	product family	PwrLoPro		title	PWR LP RECEPTACLE ASSEMBLY		dwg no	10108888	rev	H
ASME Y14.5	linear	0.X	±0.30	0.XX	±0.20	0.XXX	±0.10	angular	0°	±2°	www.fci.com
		cat. no.	-		Product - Customer Drw	sheet 5 of 7					

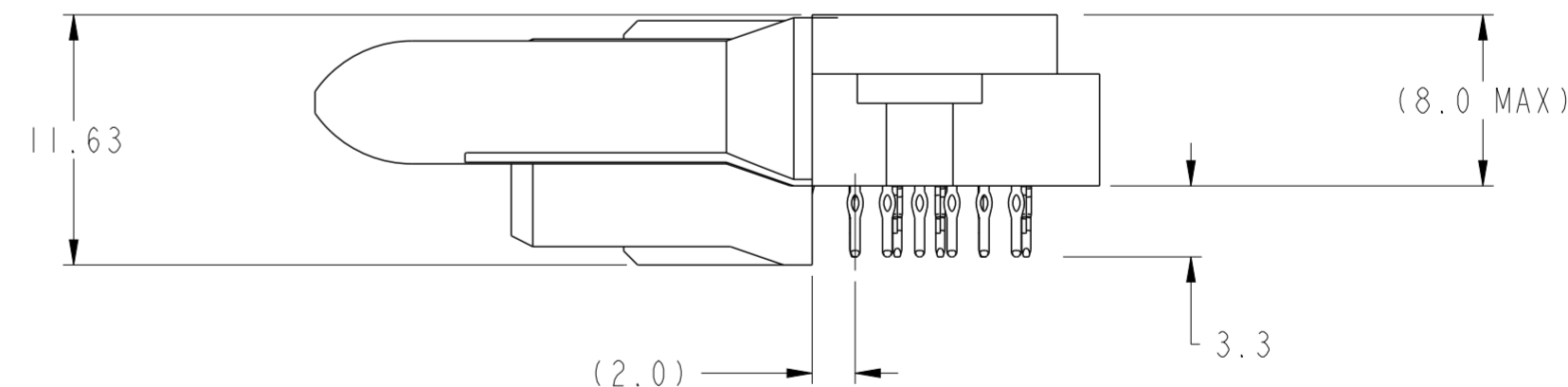
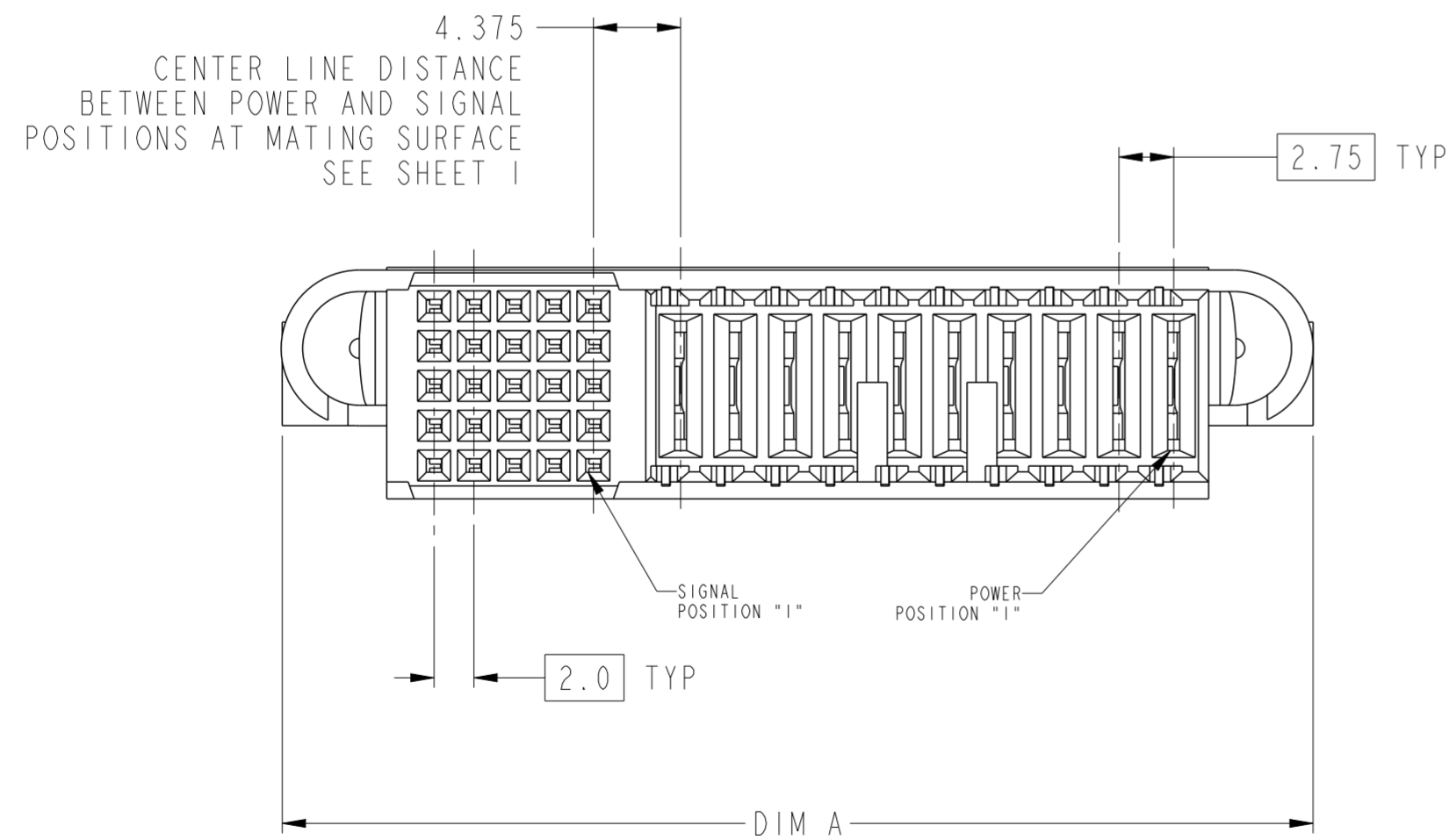
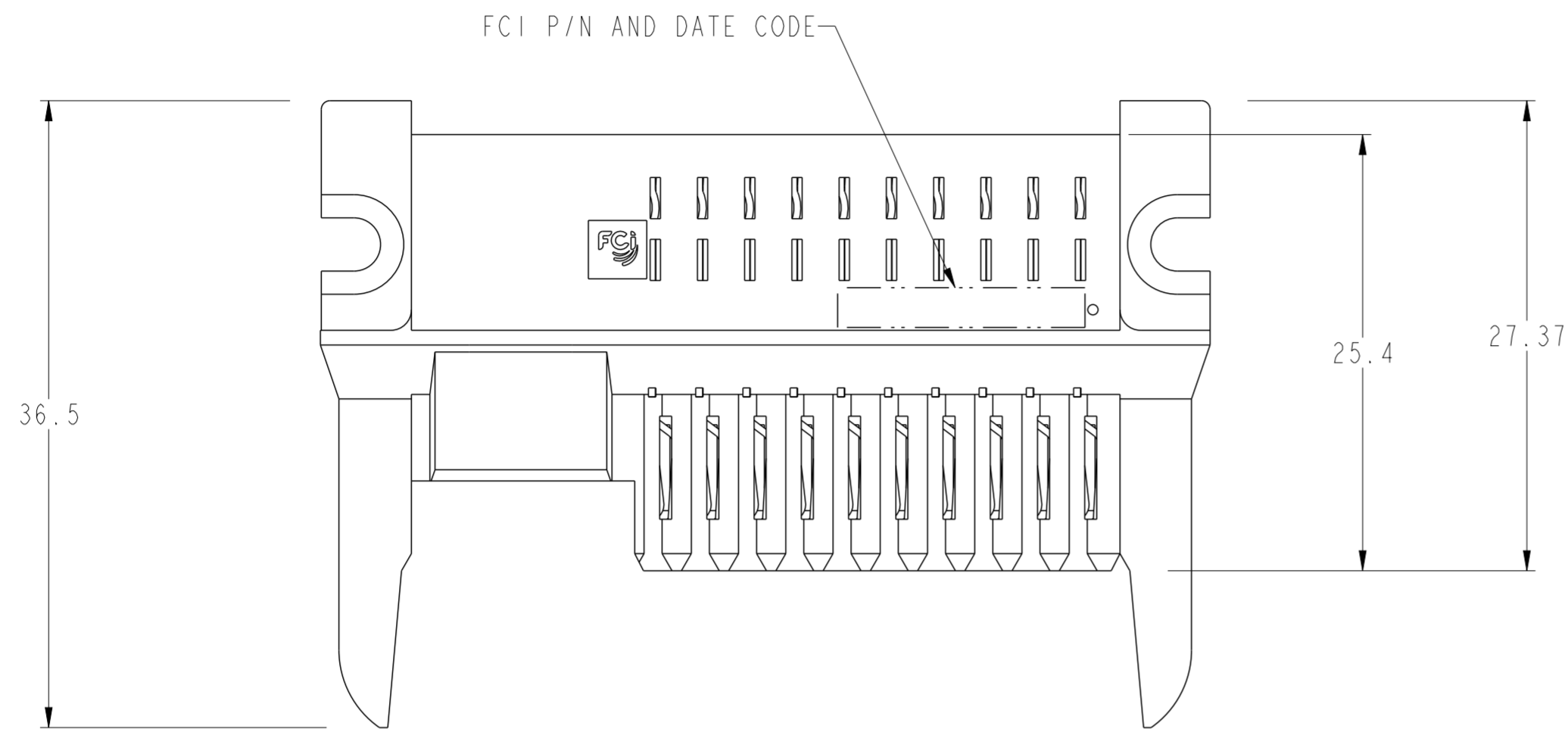
PDS: Rev :H

STATUS:Released

Printed: Mar 03, 2014

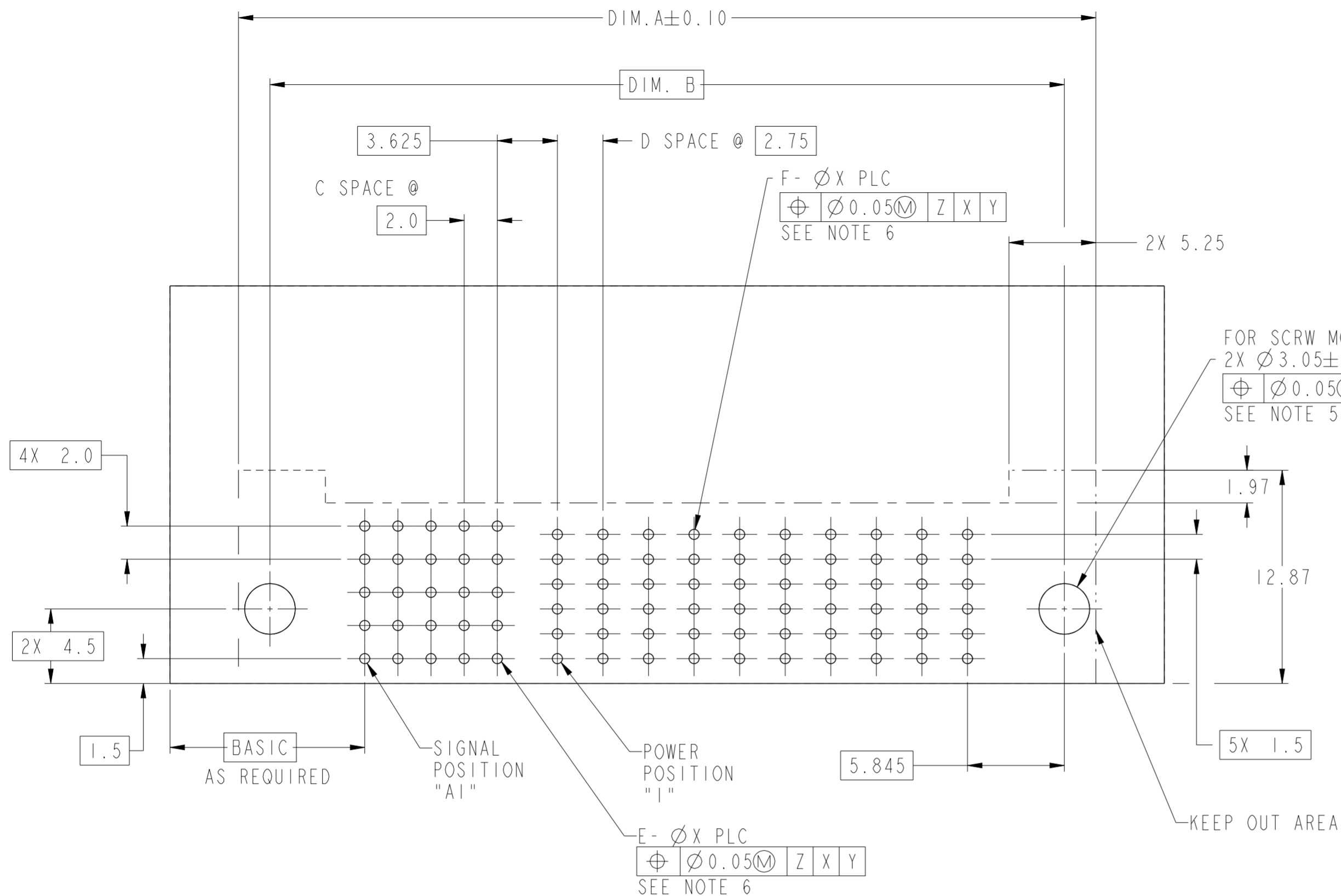
Copyright FCI. FCI

PART NUMBER	CONFIGURATION	DIM "A"	DIM "B"	"C" SPACES	"D" SPACES	"E" PLACES	"F" PLACES	MOUNTING FEATURE
10108888-L10253SLF	25S + 10P	51.74	47.94	4	9	25	60	SCREW MOUNT



10108888-L10253SLF AS SHOWN  
SCREW MOUNT TYPE

spec ref	-	dr	Zhang Hong-Tu	2012/07/04	projection	MM	size	A2	scale	1:1
tolerance std	ASME Y14.5	eng	Heaven Cen	2014/03/02			ecn no	ELX-DG-17027-1	rel level	Released
TOLERANCES UNLESS OTHERWISE SPECIFIED		chr	Jon Qin	2014/03/02						
		appr	Collins Lu	2014/03/02						
surface	linear	0.X	±0.30		product family PwrLoPro	title PWR LP RECEPTACLE ASSEMBLY RA, PASSIVE GUIDE	dwg no 10108888	rev H	ASME Y14.5	angular 0° ±2°
		0.XX	±0.20							
		0.XXX	±0.10							
		www.fci.com		cat. no.	Product - Customer Drw		sheet 6 of 7			



10108888-L10253SLF SHOWN  
 RECOMMENDED PRINTED CIRCUIT BOARD LAYOUT SEE NOTE 4  
 FOR 10108888-LXXXX3SLF  
 (AS VIEWED FROM COMPONENT SIDE)

NOTES:

- HOUSING MATERIAL: GF LCP, COLOR: BLACK, UL 94 V-0 RATED  
 SIGNAL CONTACT MATERIAL: PHOSPHOR BRONZE  
 SIGNAL PIN OVERMOLD MATERIAL: GF POLYESTER  
 POWER CONTACT MATERIAL: COPPER ALLOY  
 HOLD DOWN MATERIAL: PHOSPHOR BRONZE
- PLATING ON SIGNAL CONTACTS: 1.27µm MIN Ni UNDERPLATING ALL OVER WITH 0.76µm MIN GXT IN CONTACT MATING AREA, AND 0.5µm MIN MATTE TIN ON TAIL AREA.  
  
 PLATING ON POWER CONTACTS: 1.27µm MIN Ni UNDERPLATING ALL OVER WITH 0.76µm MIN GXT IN CONTACT MATING AREA, AND 0.5µm MIN MATTE TIN ON TAIL AREA.
- LUBRICATION: LUBRICATE ON CONTACT AREA.
- RECOMMENDED PCB THICKNESS IS:  
 FOR PRESS FIT APPLICATION: 1.4mm MIN  
 FOR SOLDER APPLICATION: 1.40mm THROUGH 2.62mm.
- FOR SCREW MOUNT APPLICATIONS, A #4-40 UNC PAN SCREW WITH HEX NUT IS RECOMMENDED (SUPPLIED BY CUSTOMER).
- FOR PRESS FIT Ø0.61mm, FOR SOLDER Ø0.90mm.
- PRODUCT SPECIFICATION: GS-12-1064  
 APPLICATION SPECIFICATION: GS-20-0362

spec ref	-	dr	Zhang Hong-Tu	2012/07/04	projection	MM	size	A2	scale	1:1
tolerance std	ASME Y14.5	eng	Heaven Cen	2014/03/02			ecn no	ELX-DG-17027-1	rel level	Released
TOLERANCES UNLESS OTHERWISE SPECIFIED		chr	Jon Qin	2014/03/02						
		appr	Collins Lu	2014/03/02						
surface	✓	linear	0.X	±0.30		TITLE PWR LP RECEPTACLE ASSEMBLY RA, PASSIVE GUIDE	dwg no 10108888	rev H	ASME Y14.5 angular 0° ±2°	www.fci.com cat. no.
			0.XX	±0.20						
			0.XXX	±0.10						
Product - Customer Drw										