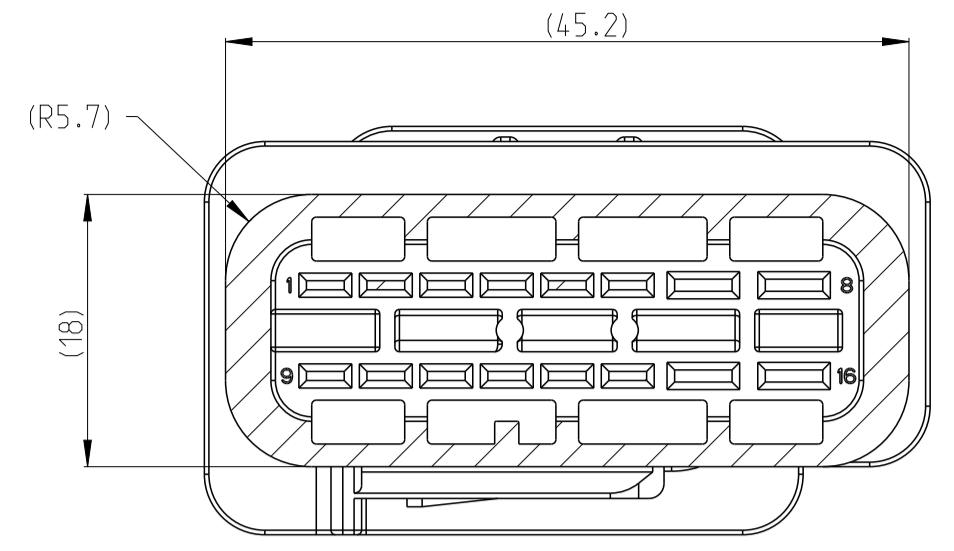
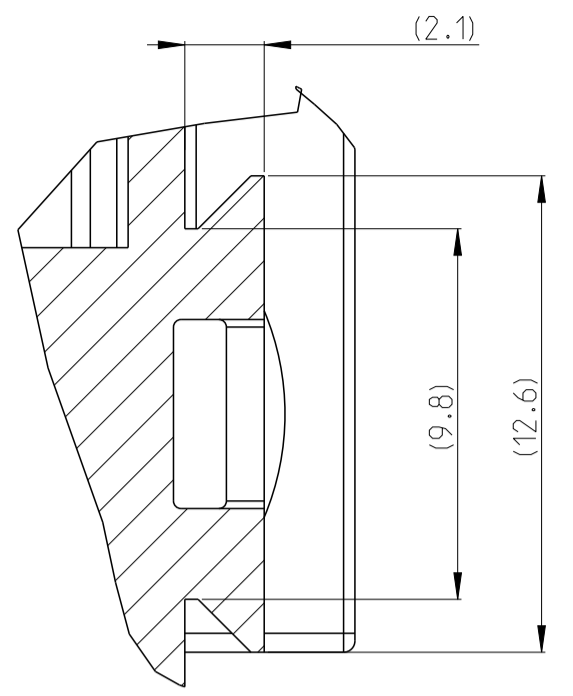
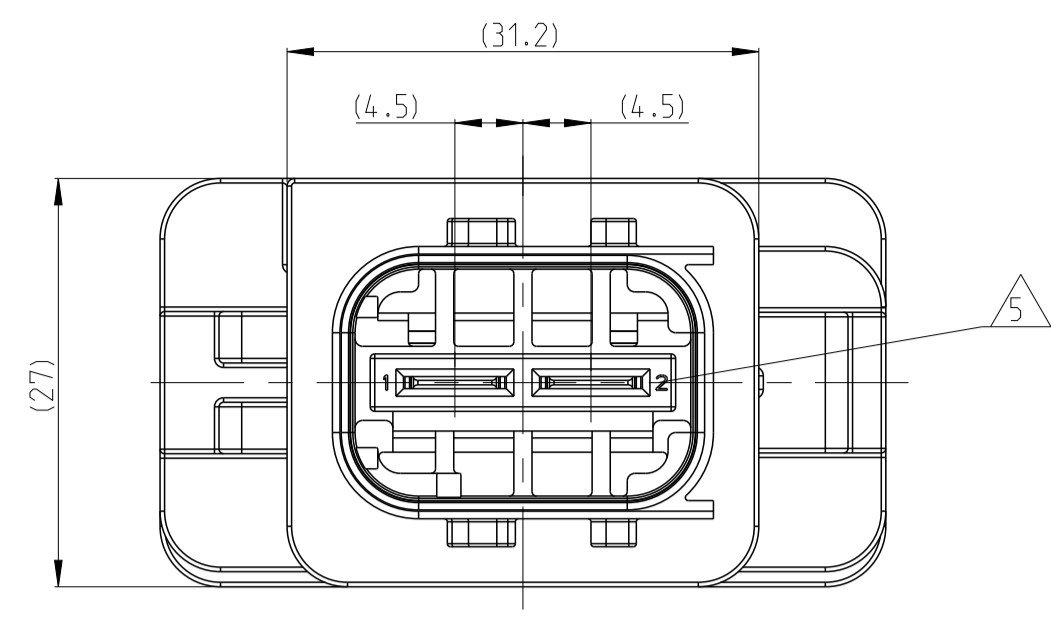
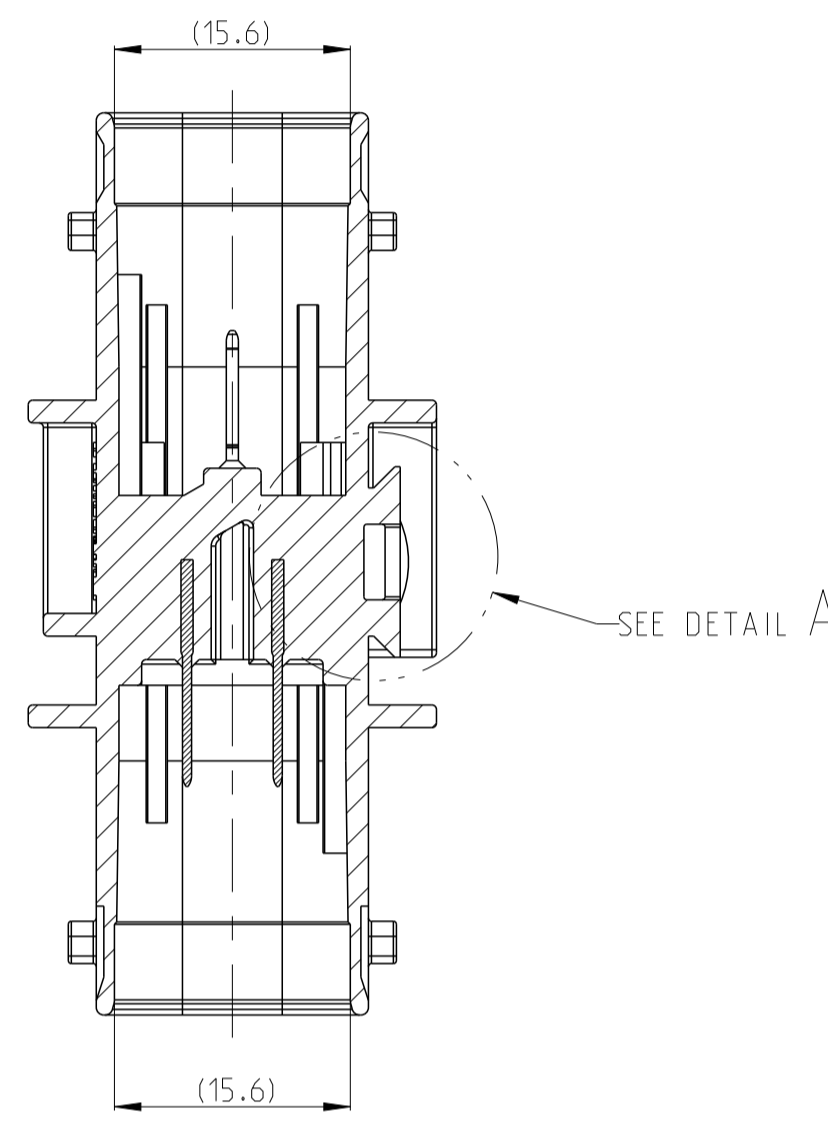
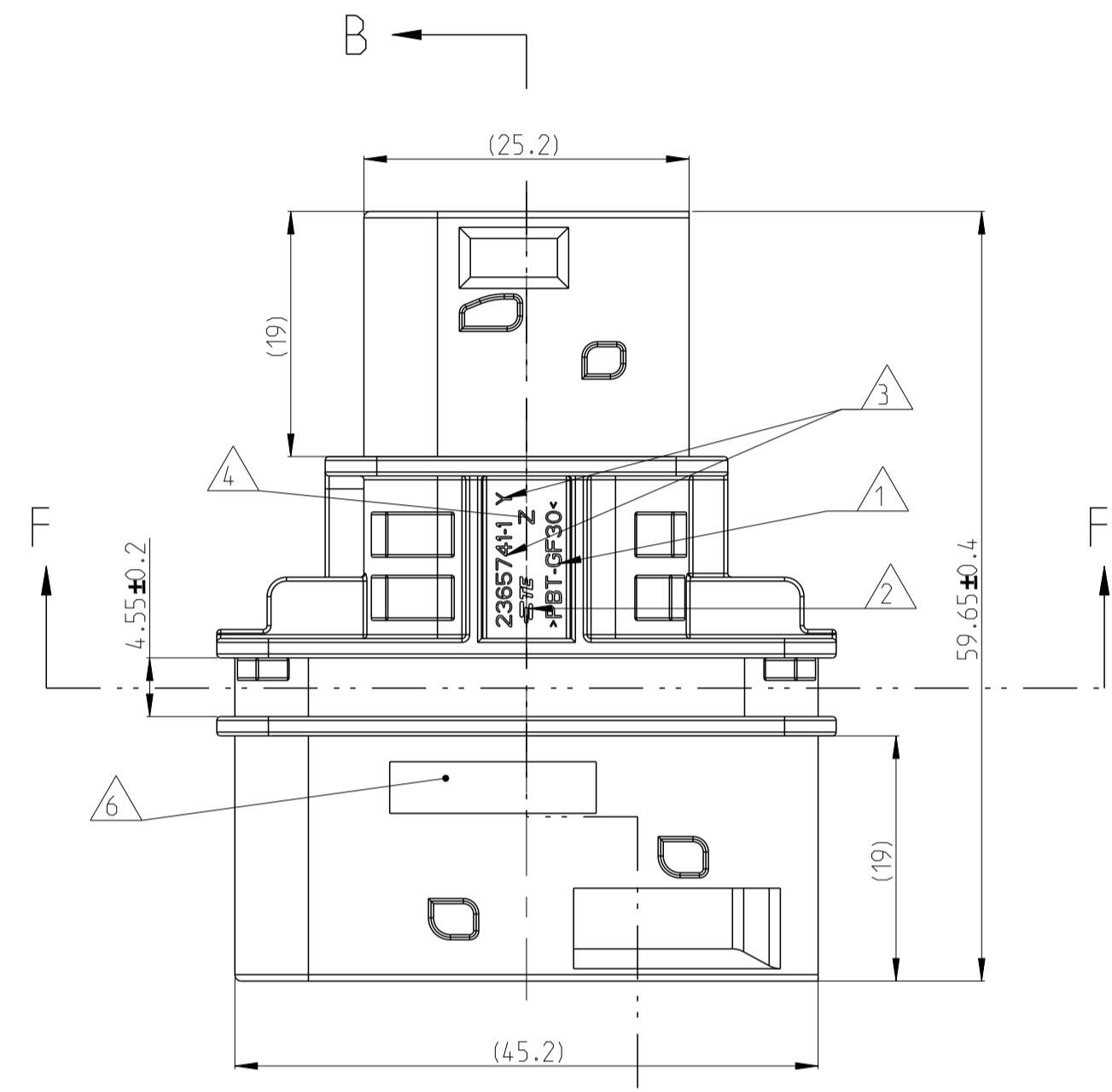


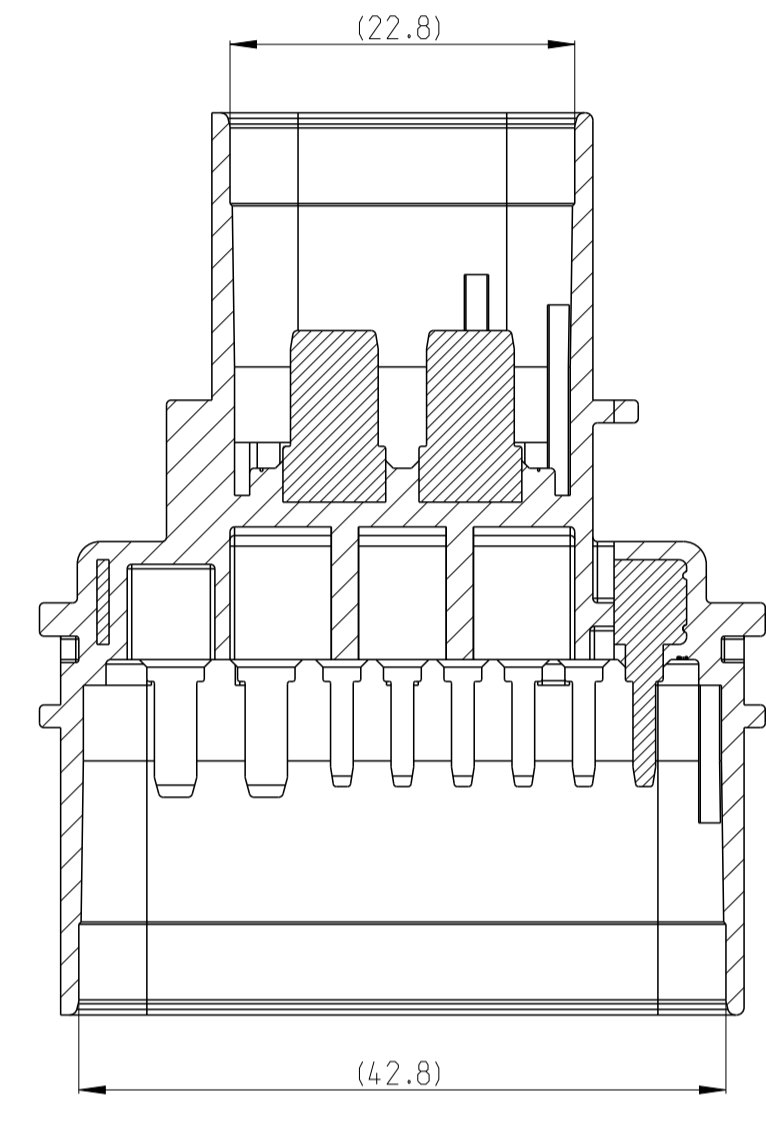
REVISIONS				
P	LTN	DESCRIPTION	DATE	APVD
A		INITIAL RELEASE	01NOV2020	Z.L E.J
A1		ECR-21-001487	04FEB2021	L.Z E.J



SECTION F-F

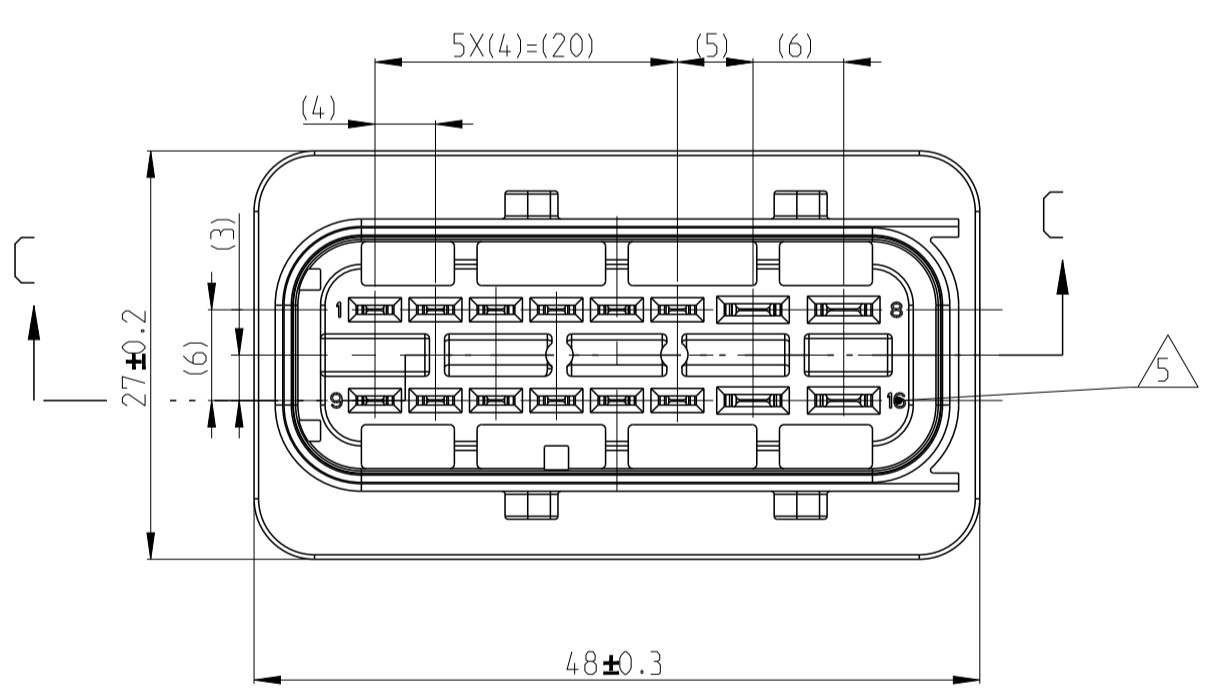


SECTION B-B

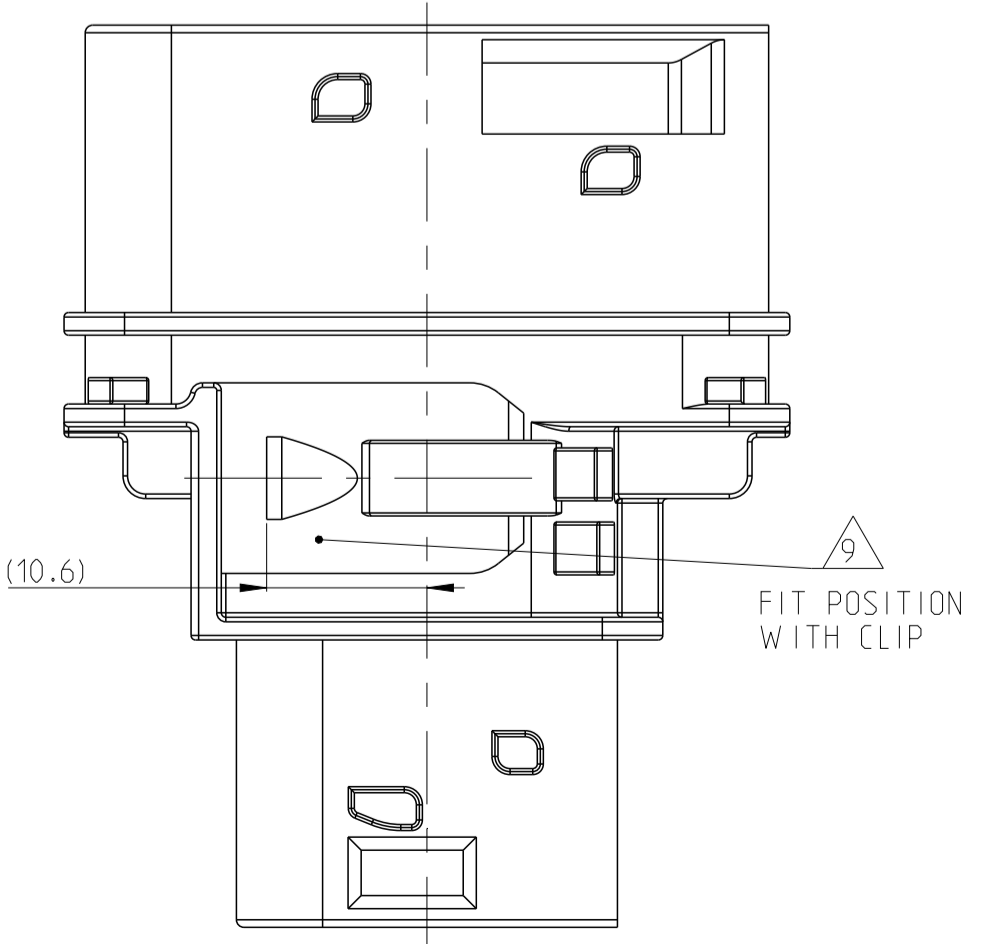
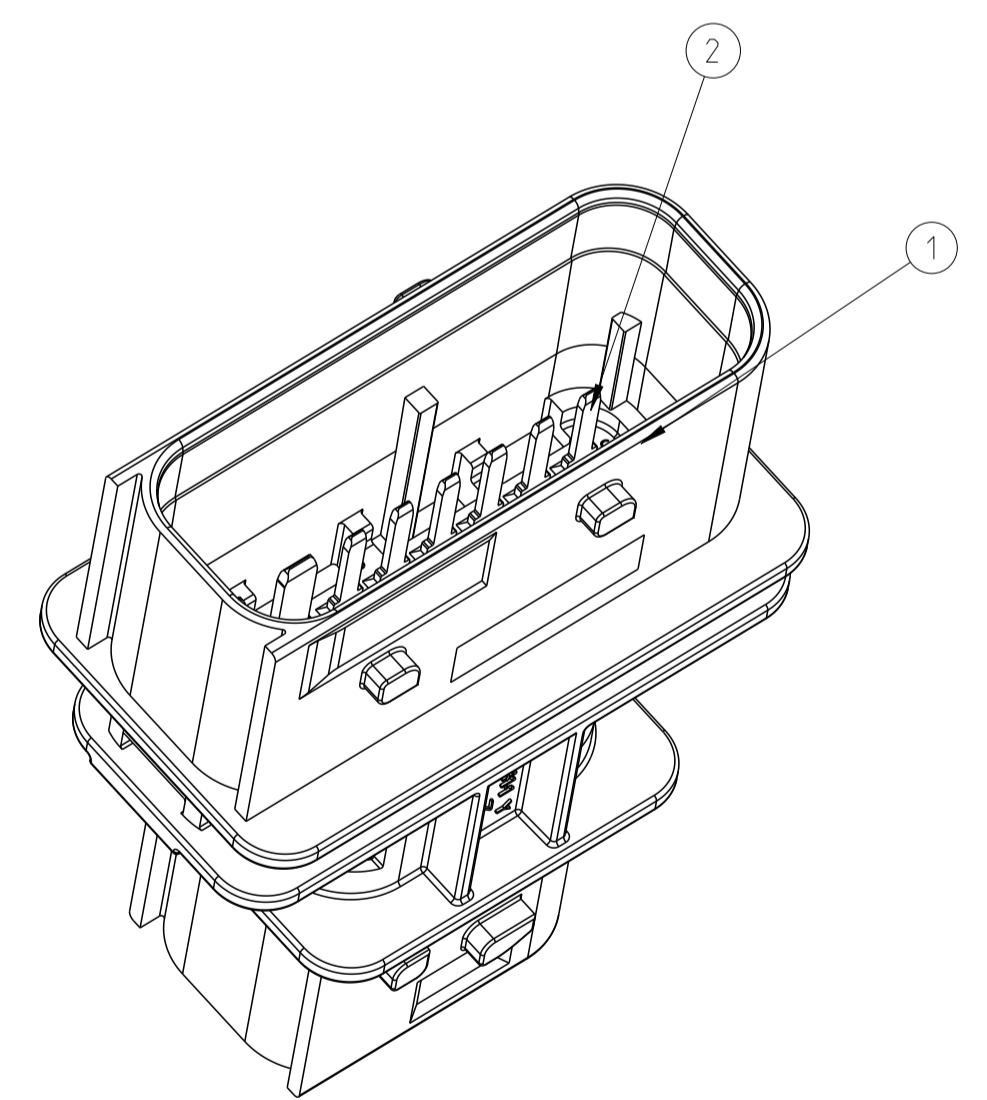
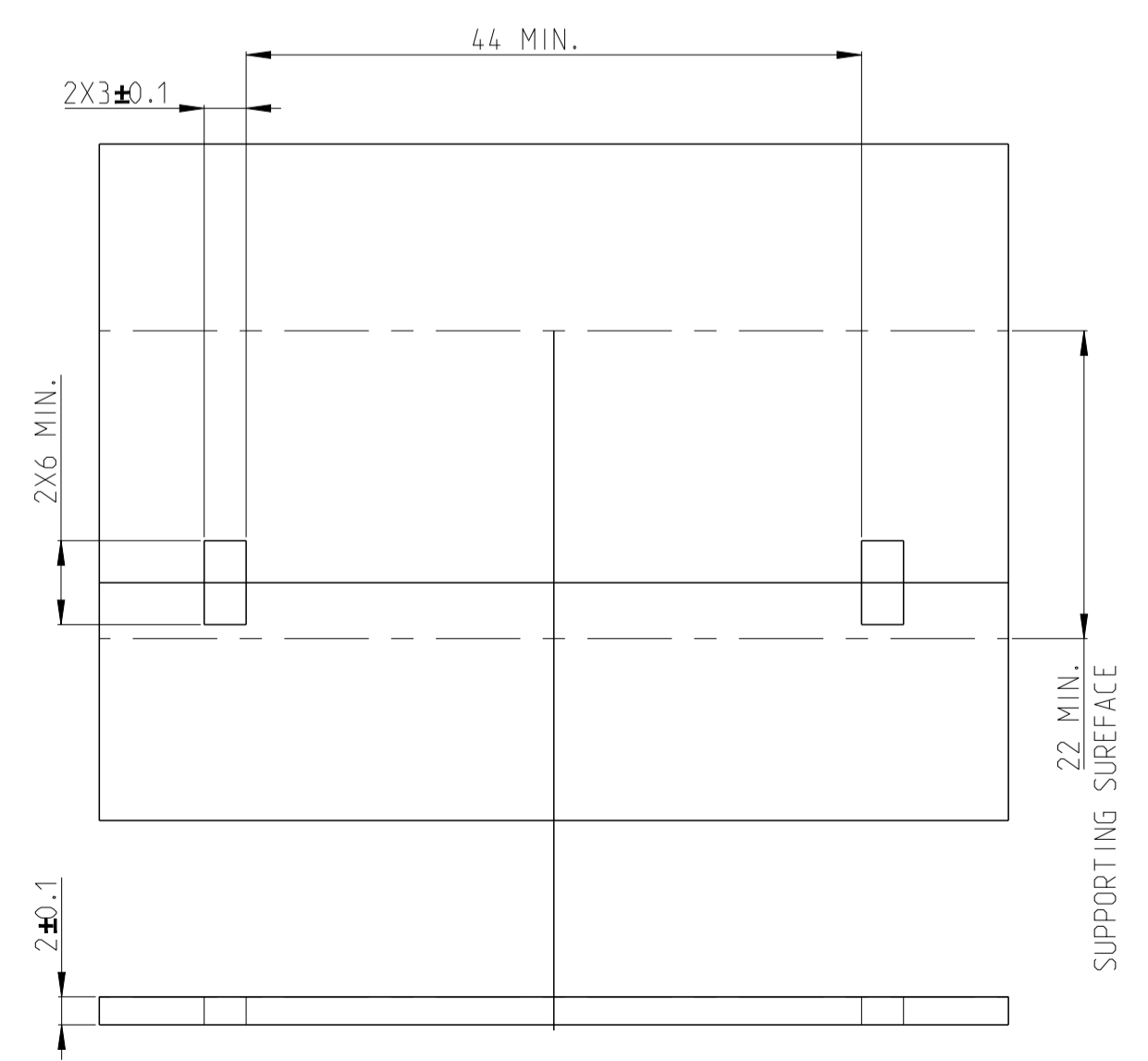
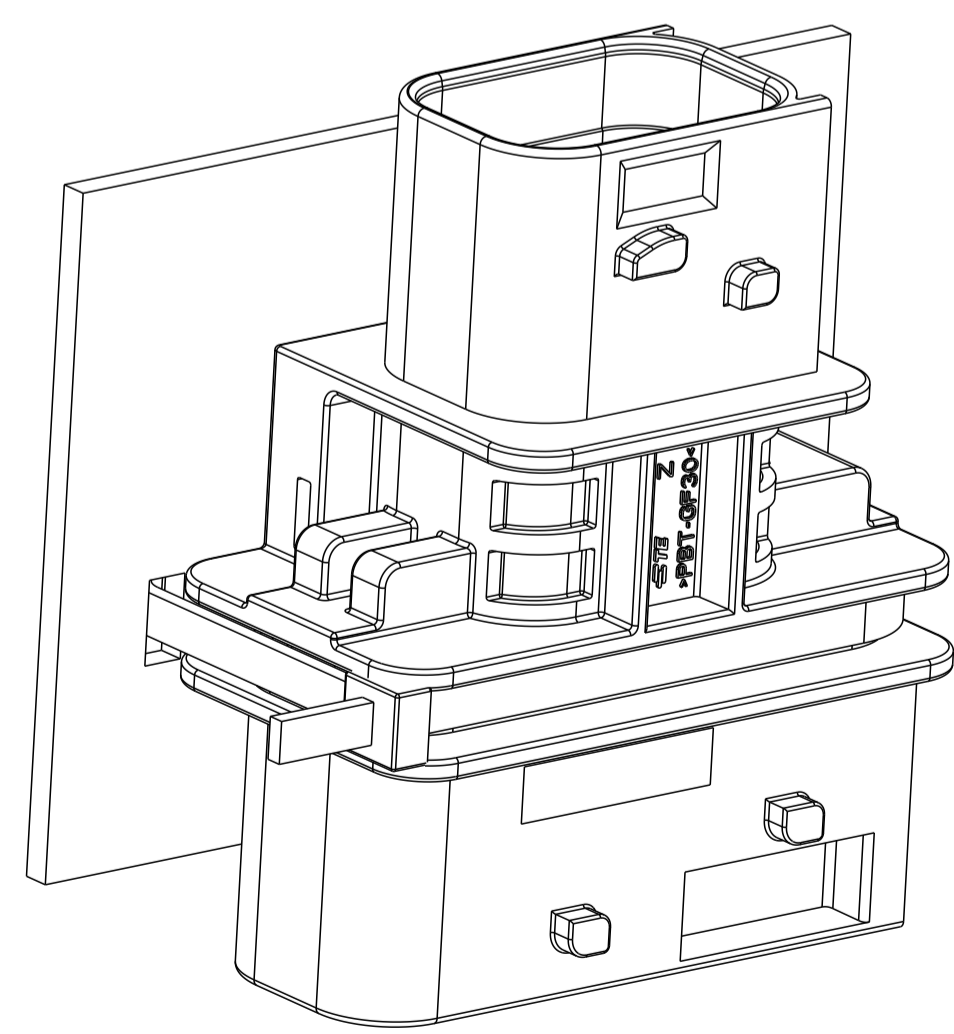


SECTION C-C

- 1 HOUSING MATERIAL MARK ">PBT-GF30<"
- 2 TE LOGO
- 3 TE ASSEMBLY NO. 2365741-1, ASSEMBLY REVISION Y=A,B,C...
- 4 TOOLING CAVITY NUMBER Z=1, 2, 3...
- 5 PIN CAVITY NUMBER
- 6 LASER MARK
MARKS CONTENT:
YYYY-MM-DD-HH-MM-SS
(MEANING YEAR-MONTH-DAYS-HOURS-MINUTES-SECONDS).
EXAMPLE: 2019-12-30-08-12-10.
MARKS REQUIREMENT MUST BE CLEAR AND LEGIBLE.
- 7. OPERATION TEMPERATURE: -40-120°C
- 8. SUITABLE COUNTERPART:
2P HARNESS SIDE: TE PART NUMBER 1-1564542-1
16P HARNESS SIDE: TE PART NUMBER 1-1564337-1
- 9 CONNECTOR CAN BE FIXED BY DIFFERENT METHODS.RECOMMEND BELOW:
(a). FIXED BY CABLE TIE ON METAL SHEET.
(b). FIXED BY CLIP ON METAL SHEET. RECOMMENDED CLIP TE PART NUMBER 2355806-1



RECOMMENDED MOUNTING SITUATION FOR CABLE TIE



2365741-1	1	TERMINAL	-	2
TE ASSEMBLY P/N	1	HOUSING	BLACK	1
QTY		DESCRIPTION	COLOR	ITEM

THIS DRAWING IS A CONTROLLED DOCUMENT.

DIMENSIONS:	TOLERANCES UNLESS OTHERWISE SPECIFIED:	OWN	15FEB2020
mm	0 PLC ±0.1	CHK	15FEB2020
	1 PLC ±0.1	W.W.U	15FEB2020
	2 PLC ±0.1	APVD	15FEB2020
	3 PLC ±0.001	LYLIN	15FEB2020
	4 PLC ±0.001	PRODUCT SPEC	
	ANGLES ±0.0001	APPLICATION SPEC	
	FINISH	WEIGHT	
MATERIAL		CUSTOMER DRAWING	

NAME: HDSCS 2P/16P SEALED HEADER

SIZE: A1 CAGE CODE: 00779 DRAWING NO: 2365741

SCALE: 2:1 SHEET 1 OF 1 REV: A1