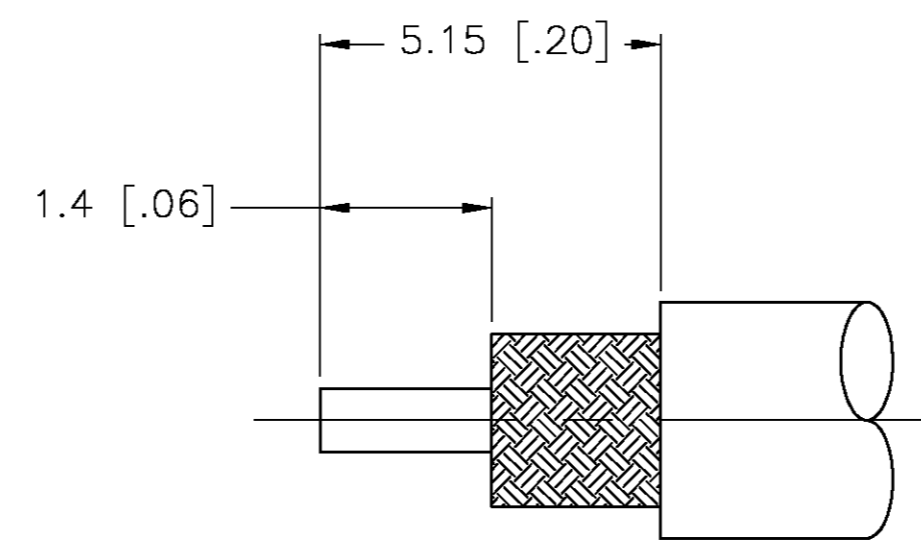
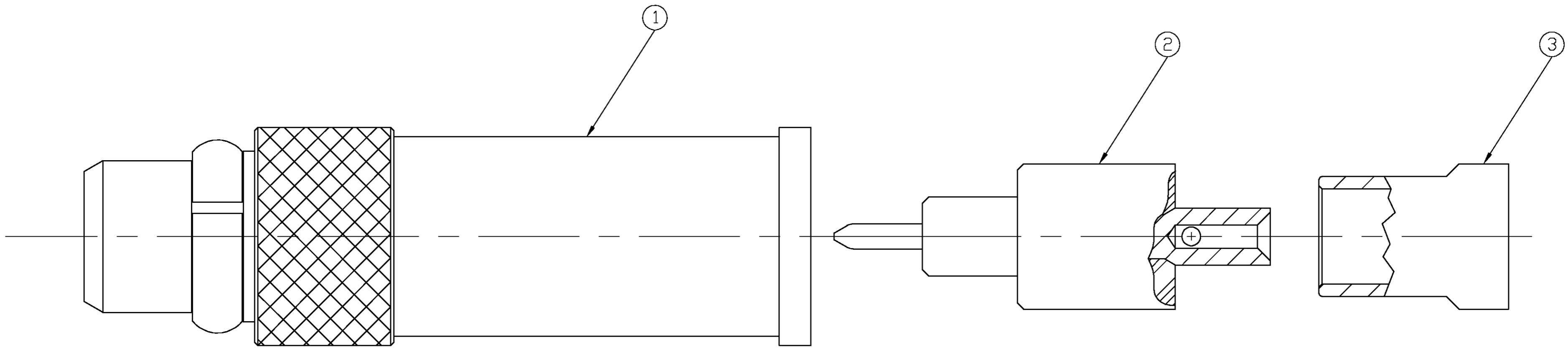


THIS DRAWING IS UNPUBLISHED. RELEASED FOR PUBLICATION
 © COPYRIGHT BY TYCO ELECTRONICS CORPORATION. ALL RIGHTS RESERVED.

Loc		DIST		REVISIONS			
P	LTR	DESCRIPTION	DATE	DWN	APVD		
AJ	-	E	REV PER 0514-0145-04	08APR04	KW	KW	



RECOMMENDED CABLE STRIP LENGTH (NTS)

- 1. ITEMS 1, 2, 3, AND 4 PACKAGED UNASSEMBLED
- △ CRIMP REQUIREMENTS: CENTER CONTACT .70 [.028] SQUARE
- △ CRIMP REQUIREMENTS: HOUSING 2.67 [.105] HEX
- 4. ITEM 4 NOT SHOWN.

OMNIFLEX 200 △△	1405671-2	1408216-4	1408218-1	1408217-1	1408148-2
RG-178 △△ RG-196 △△	---	1408216-2	1408218-1	1408217-1	1408148-1
CABLE CRIMP INFO	SHRINK TUBING ④	CABLE BUSHING ③	CONTACT ASSY ②	HOUSING ASSY ①	PART NUMBER

THIS DRAWING IS A CONTROLLED DOCUMENT.

DWN	RMF	04OCT01
CHK	RMF	04OCT01
APVD	RMF	04OCT01
PRODUCT SPEC	108-2084	
APPLICATION SPEC	408-8625	
WEIGHT	0.5GR/0.0180Z	A2
CUSTOMER DRAWING	SCALE 20:1	SHEET 1 OF 1

tyco Electronics Tyco Electronics Corporation
Middletown, PA 17057

NAME: MMCX STRAIGHT CABLE PLUG, CRIMP ATTACHMENT

SIZE: A2 CAGE CODE: 00779 DRAWING NO: C=1408148 RESTRICTED TO: -