

**SAW Filter 1228.0MHz**

**Model: TA0490A**

**Part No: MA08506**

**REV. NO.: 1**

**A. MAXIMUM RATING:**

1. Input Power Level: 5 dBm
2. DC voltage: 3 V
3. Operating Temperature: -40°C to 85°C
4. Storage Temperature: -40°C to +85°C

**B. CHARACTERISTICS:**

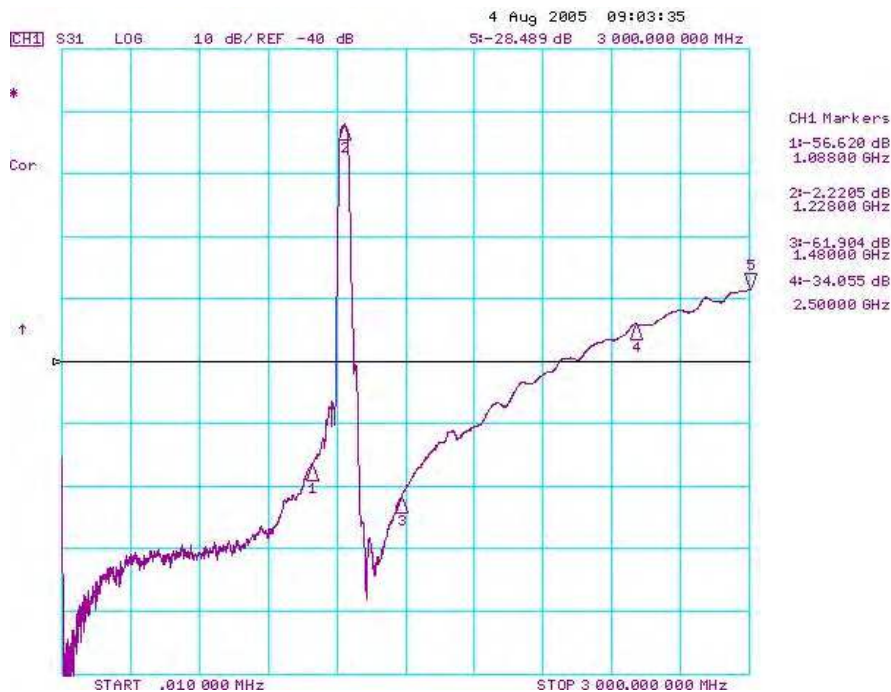
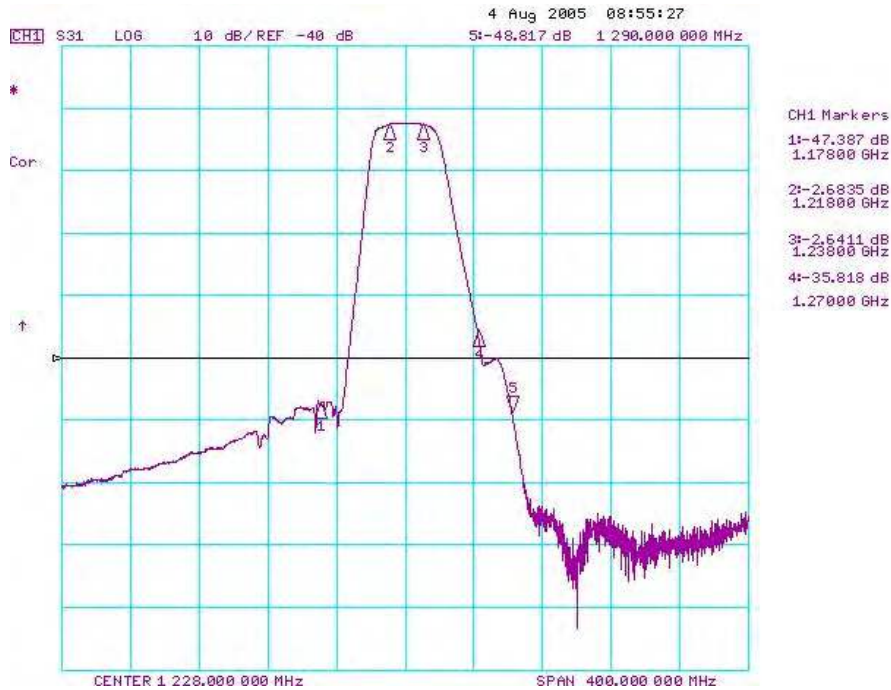
Item	Unit	Min.	Typ.	Max.
Center Frequency	MHz	-	1228	-
Insertion Loss 1218 ~ 1238 MHz	dB	-	2.7	3.9
Ripple 1218 ~ 1238 MHz	dB	-	0.4	1.8
<b>Absolute Attenuation</b>				
0 ~ 1088 MHz	dB	38	53	-
1088 ~ 1178 MHz	dB	32	46	-
1178 ~ 1188 MHz	dB	20	45	-
1270 ~ 1290 MHz	dB	15	35	-
1290 ~ 1378 MHz	dB	30	49	-
1378 ~ 1480 MHz	dB	35	55	-
1480 ~ 2500 MHz	dB	27	34	-
2500 ~ 3000 MHz	dB	18	28	-
Source Impedance	Ω	-	50	-
Load Impedance	Ω	-	50	-

Note1. No matching network required for operation at 50Ω

**SAW Filter 1228.0MHz**  
**Part No: MA08506**

**Model: TA0490A**  
**REV. NO.: 1**

**C. TRANSFER FUNCTION:**



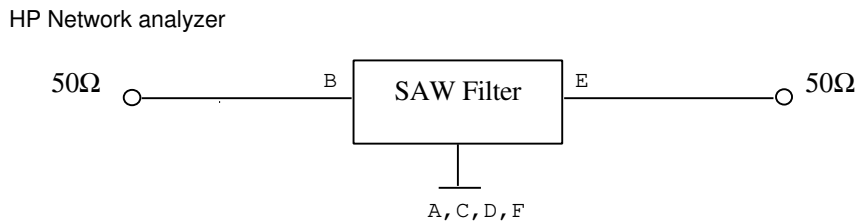
**SAW Filter 1228.0MHz**

**Model: TA0490A**

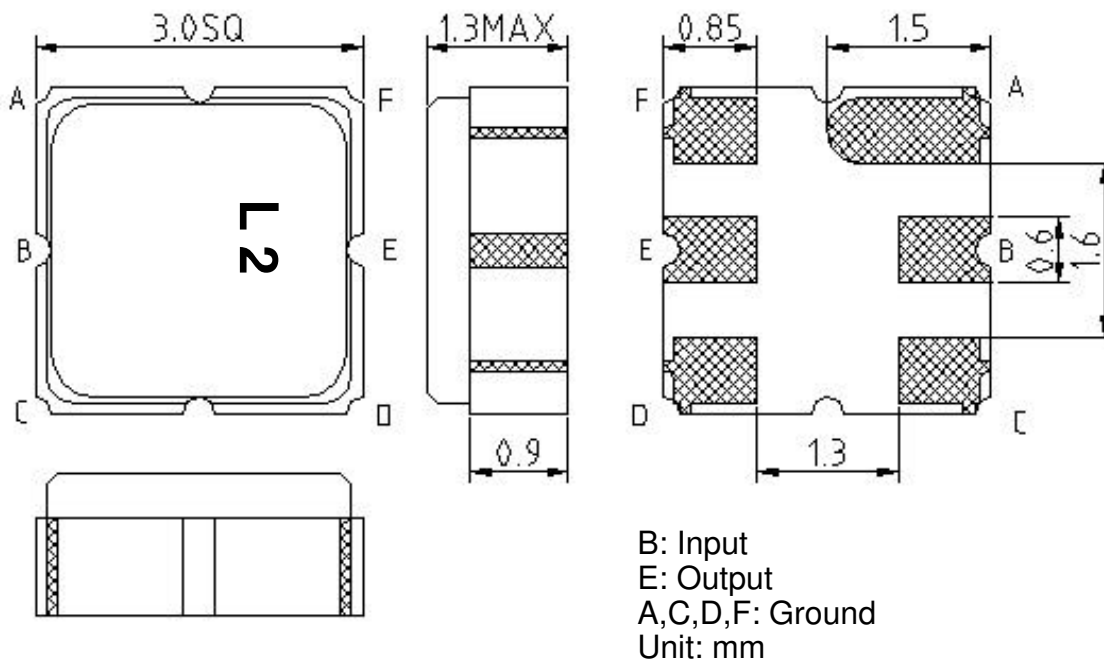
Part No: **MA08506**

REV. NO.: 1

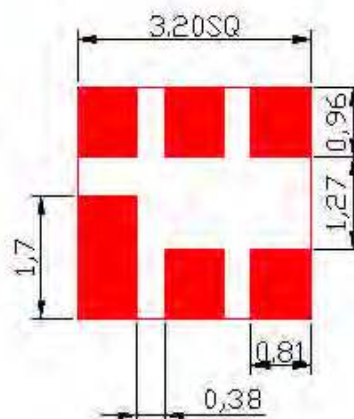
**D. MEASUREMENT CIRCUIT:**



**E. OUTLINE DRAWING:**



**F. PCB FOOTPRINT:**



**SAW Filter 1228.0MHz**

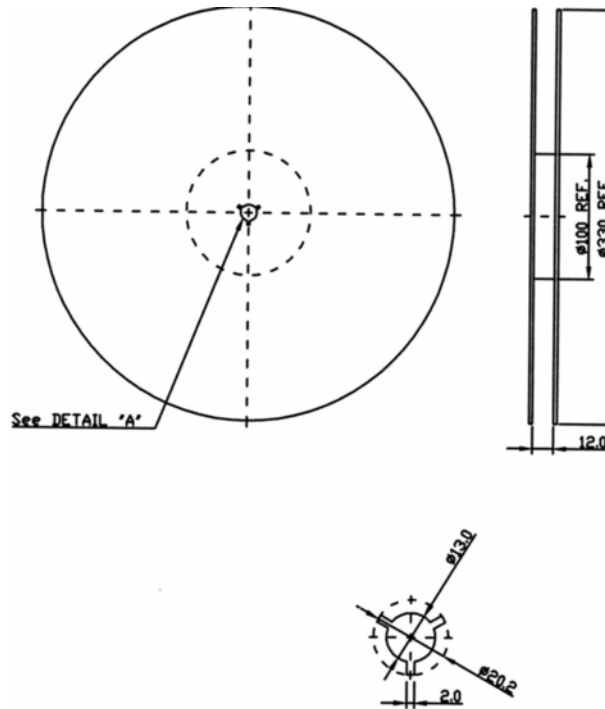
**Model: TA0490A**

**Part No: MA08506**

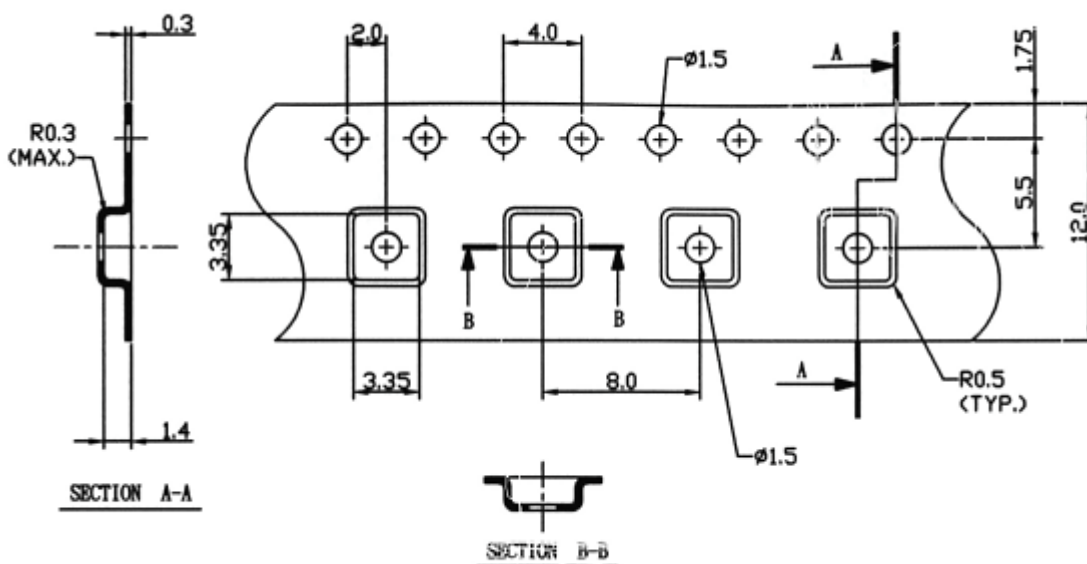
**REV. NO.: 1**

**G. PACKING:**

**1. REEL DIMENSION**



**2. TAPE DIMENSION**



→  
Direction of Feed