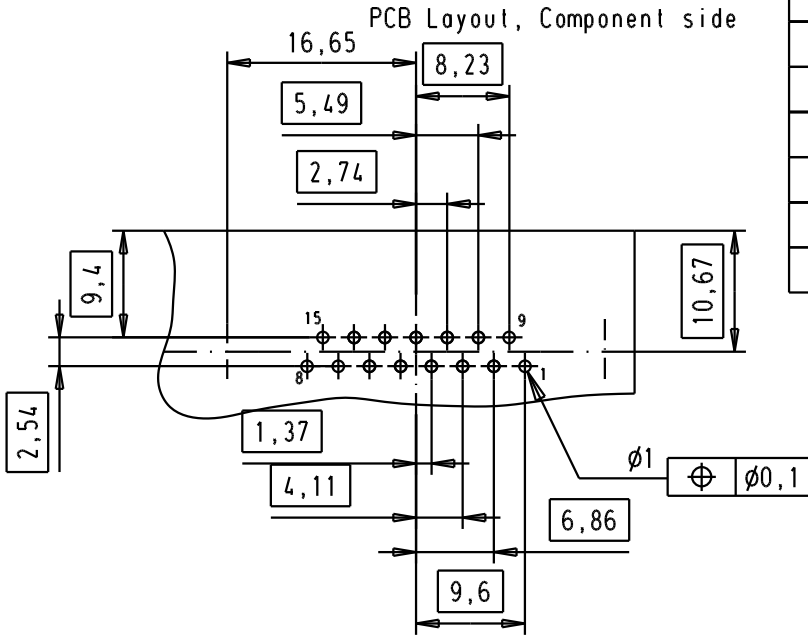
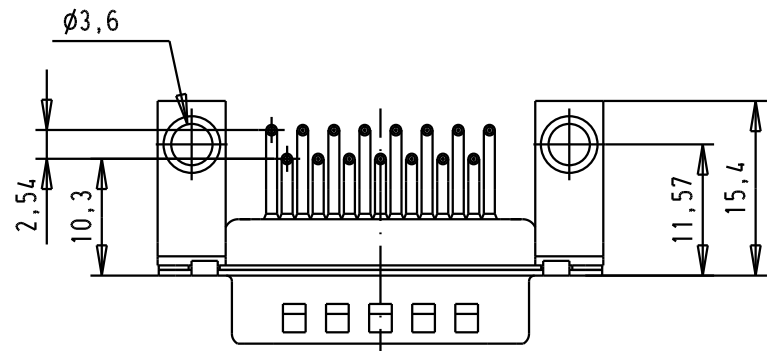
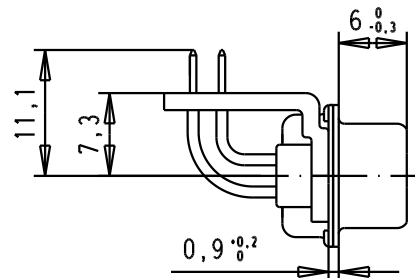
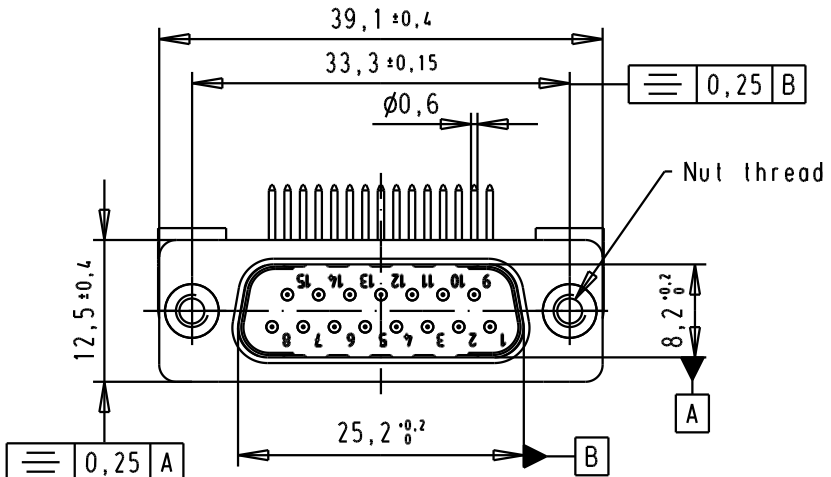


SPECIFICATION

Mating Cycles	500
Filter type	C
Capacitance	1000pf±20%
Working Voltage	100V
Current Rating	7,5Amp
Insulation Resistance	>1GΩ

Minimum Insertion Loss

FREQUENCY (MHz)	ATTENUATION dB
5	1dB
10	3dB
50	12dB
100	20dB
500	34dB
1000	30dB



09642247237	M3
09642247236	4-40UNC 2B
Part number	Nut thread

31576	01/12/03	AF
31493	12-05-03	PP
31487	17-04-03	PP
Mod.	Dat.	Name

Dat. 17-04-03
 Name PP
 Detail.
 Insp.
 Stand.
 HARTING EURL
 F-95972 Paris

D-Sub, male, angled,
 15 Poles, with turned solder
 pin, metal bracket with nut
 and hole
 TB 0964224723x
 Sub.