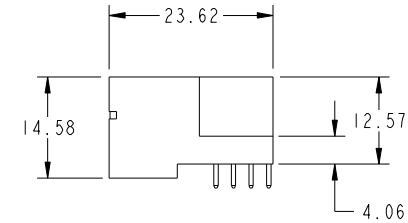
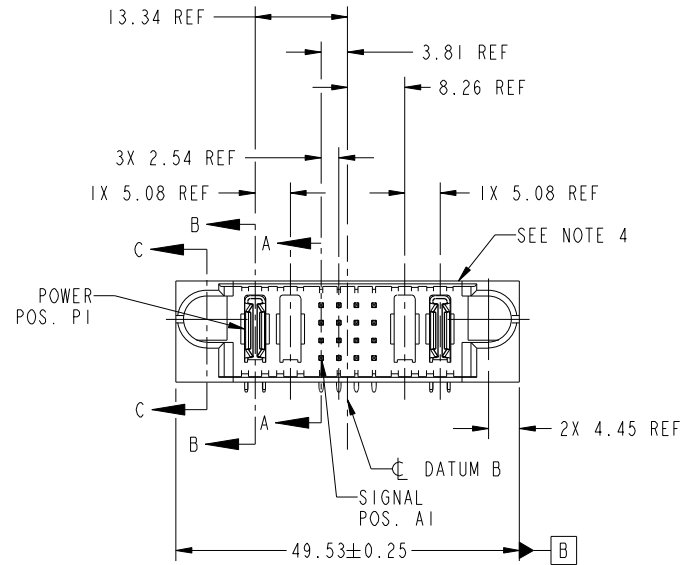


Tous droits strictement reserves. Reproduction ou communication a des tiers interdite sous quelque forme que ce soit sans autorisation écrite du propriétaire. Propriete de c FCI. Droits de reproduction FCI.

All rights strictly reserved. Reproduction or issue to third parties in any form whatever is not permitted without written authority from the proprietor. Property of FCI. Copyright FCI.



PRODUCT NO. 51939-315... NOTE 3	ROWS DCBA	POWER		SIGNAL				POWER		E2	
		E1	P1	P2	1	2	3	4	P3		P4



CODE	DIM "M" MATING LENGTH	CONTACT TYPE
U	[6.86]	SIGNAL
T	[6.86]	SIGNAL
S	[6.86]	SIGNAL
R	[6.86]	SIGNAL
PA	[N/A]	POWER
X	OMITTED	OMITTED

mat'l code				SEE NOTE		tolerances unless otherwise specified		CUSTOMER	
ltr	ecn no.	dr	date	linear	0.X ± 0.3	angles	0.XX ± 0.13	projection	
A	DG07-0334	SH	08/17/07		0.XXX ± 0.051	dr	0° ± 2°		
				enr	Sincere He	08/17/07		scale	1:1
				chr	Gary Hsieh	08/17/07			
				appd	Joseph Hsia	08/17/07			
sheet index	revision sheet	A	A	A	A	A	A		
		1	2	3	4				

CONFIDENTIAL

www.fciconnect.com

title: 2P+16S+2P
RIGHT ANGLE SOLDER HEADER

product family: PwrBlade code: 213

size: A dwg no: 51939-315 sheet: 1 of 4

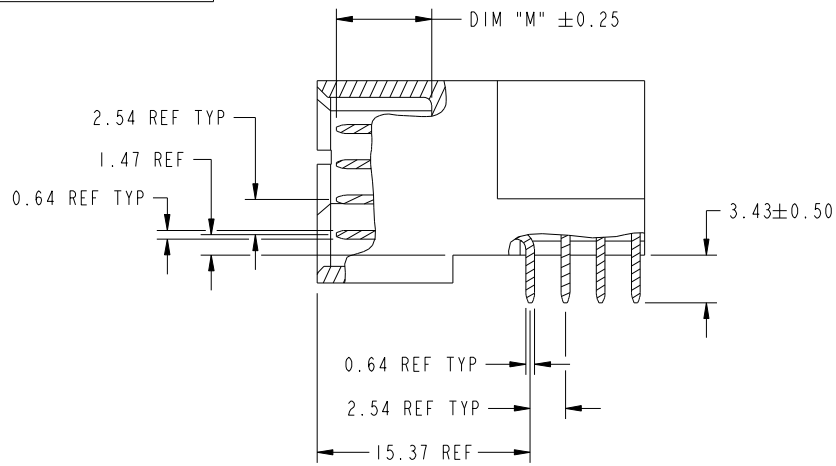
cage code: 22526

Tous droits strictement reserves. Reproduction ou communication a des tiers interdite sous quelque forme que ce soit sans autorisation ecrite du proprietaire. Propriete de c FCI. Droits de reproduction FCI.

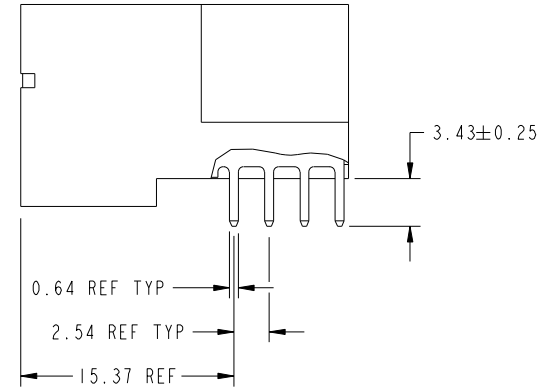
All rights strictly reserved. Reproduction or issue to third parties in any form whatever is not permitted without written authority from the proprietor. Property of FCI. Copyright FCI.



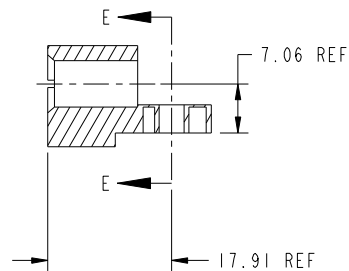
PRODUCT NUMBER
51939-315-
NOTE: 3



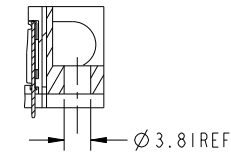
BROKEN-OUT SECTION A-A
SCALE 2:1



BROKEN-OUT SECTION B-B
SCALE 2:1



SECTION C-C



PARTIAL SECTION E-E

CONFIDENTIAL

mat'l code				SEE NOTE		tolerances unless otherwise specified		CUSTOMER		FCI	
ltr	ecn no.	dr	date	linear	0.X ±0.3	projection	projection	COPY		www.fciconnect.com	
A				angles	0.XX ±0.13	MM	MM	title		2P+16S+2P	
				dr	0.XXX ±0.051	scale	1:1	product family		PwrBlade	
				enr	0° ±2°			size		213	
				chr	Sincere He 08/17/07			dwg no		51939-315	
				appd	Sincere He 08/17/07			sheet		2 of 4	
					Gary Hsieh 08/17/07			cage code		22526	
					Joseph Hsia 08/17/07						
sheet index	revision sheet										

Pro/E

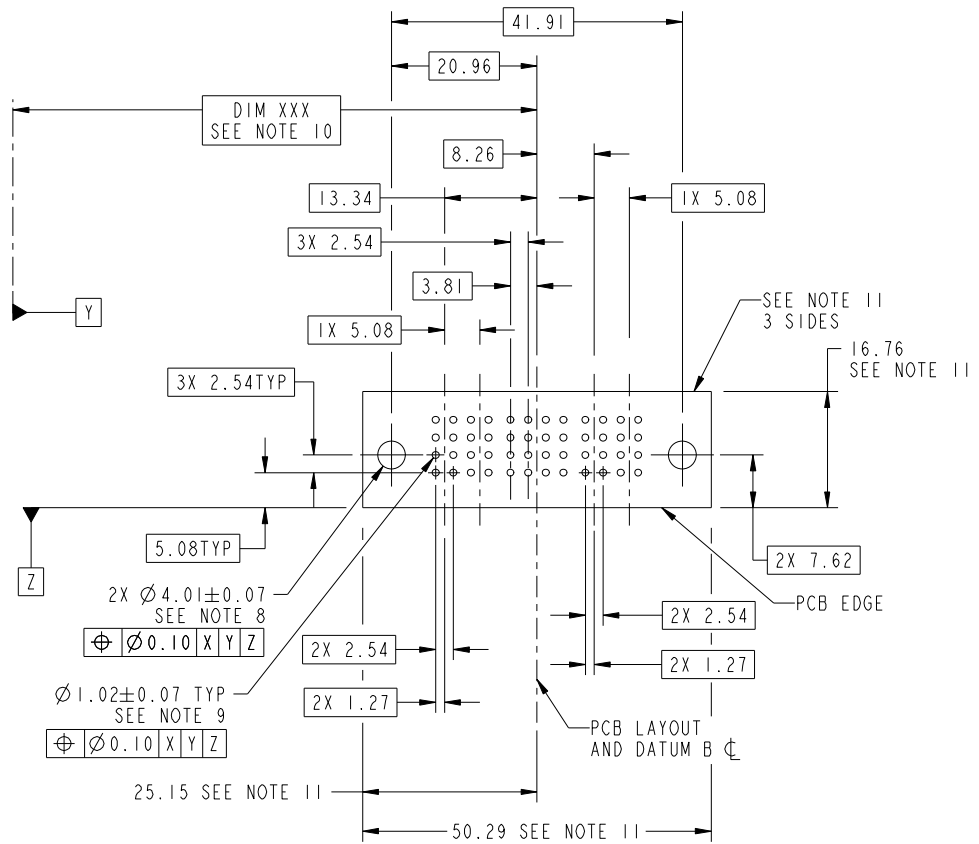
cage code 22526

Tous droits strictement reserves. Reproduction ou communication a des tiers interdite sous quelque forme que ce soit sans autorisation écrite du propriétaire. Propriete de c FCI. Droits de reproduction FCI.



All rights strictly reserved. Reproduction or issue to third parties in any form whatever is not permitted without written authority from the proprietor. Property of FCI. Copyright FCI.

PRODUCT NUMBER
51939-315-
NOTE: 3



RECOMMENDED PCB LAYOUT

CONFIDENTIAL

mat'l code				SEE NOTE		tolerances unless otherwise specified		CUSTOMER		FCI	
ltr	ecn no.	dr	date	linear	0.X ± 0.3	COPY		projection		www.fciconnect.com	
A					0.XX ± 0.13	MIM		title		2P+16S+2P	
				angles	0.XXX ± 0.051	← MIM →		RIGHT ANGLE SOLDER HEADER		product family PwrBlade code 213	
				dr	Sincere He 08/17/07	scale		size		dwg no 51939-315 sheet 3 of 4	
				enr	Sincere He 08/17/07	1:1		A			
				chr	Gary Hsieh 08/17/07						
				appd	Joseph Hsia 08/17/07						
sheet index	revision sheet										

cage code 22526

Pro/E

Tous droits strictement reserves. Reproduction ou communication a des tiers interdite sous quelque forme que ce soit sans autorisation écrite du propriétaire. Propriete de c FCI. Droits de reproduction FCI.



All rights strictly reserved. Reproduction or issue to third parties in any form whatever is not permitted without written authority from the proprietor. Property of FCI. Copyright FCI.

PRODUCT NUMBER
51939-315--
NOTE: 3

NOTES:

1. DIMENSIONS AND TOLERANCES ARE IN ACCORDANCE WITH ASME Y14.5M, 1994 UNLESS OTHERWISE SPECIFIED.

CONNECTOR NOTES:

- 2. HOUSING MATERIAL: UL 94 V-0 GLASS FILLED
HIGH-TEMP THERMOPLASTIC
POWER CONTACT MATERIAL: COPPER ALLOY
SIGNAL PIN MATERIAL: COPPER ALLOY
- 3. 51939-315; 51939-315LF PLATING SPEC. SEE PRINT:10064183
- 4. MANUFACTURER'S NAME, P/N, AND DATE CODE TO APPEAR ON THIS SURFACE.
- 5. PRODUCT SPECIFICATION GS-12-149.
APPLICATION SPECIFICATION BUS-20-067.
- 6. PACKAGED IN TRAYS.

PCB NOTES:

- 7. ALL HOLE DIAMETERS ARE FINISHED HOLE SIZE.
- 8. MOUNTING HOLES, WHERE APPLICABLE, ARE UNPLATED.
- 9. $\varnothing 1.151 \pm 0.025$ DRILLED HOLES PLATED WITH
0.008 MIN SnPb OR Sn OVER 0.03
TO 0.08 Cu PLATING TO ACHIEVE
 $\varnothing 1.02 \pm .07$ HOLE.
- 10. "DIM XXX" TO BE DETERMINED BY THE CUSTOMER.
- 11. CONNECTOR KEEP-OUT ZONE.

CONFIDENTIAL

mat'l code				SEE NOTE	tolerances unless otherwise specified	CUSTOMER	FCI www.fciconnect.com	
ltr	ecr no.	dr	date	linear	0.X ± 0.3	COPY	title	
A					0.XX ± 0.13	projection	2P+16S+2P RIGHT ANGLE SOLDER HEADER	
				angles	0.XXX ± 0.051		product family PwrBlade code	
				dr	0° ± 2°	MIM	size	213
				enr	Sincere He 08/17/07	← MIM →	dwg no	sheet
				chr	Sincere He 08/17/07	scale	51939-315	4 of 4
				appd	Gary Hsieh 08/17/07	1:1		
					Joseph Hsia 08/17/07			
sheet index	revision sheet							

cage code 22526

Pro/E