

## Wio Lite W600 - ATSAM D21 Cortex-M0 Wireless Development Board

SKU 102991180

The Wio Lite W600 is a cost-effective Arduino compatible board with W600 WiFi module. SAM D21 + W600 makes it a perfect solution for the Arduino WiFi board.

Well, you can find hundreds of WiFi shields, modules for Arduino out there. However, most of them are either unstable, either oversized or expensive. When the Arduino and wifi chips are integrated on one development board, it is another story. Today, the protagonist of our story is **Wio Lite W600 -- SAM D21+W600**.

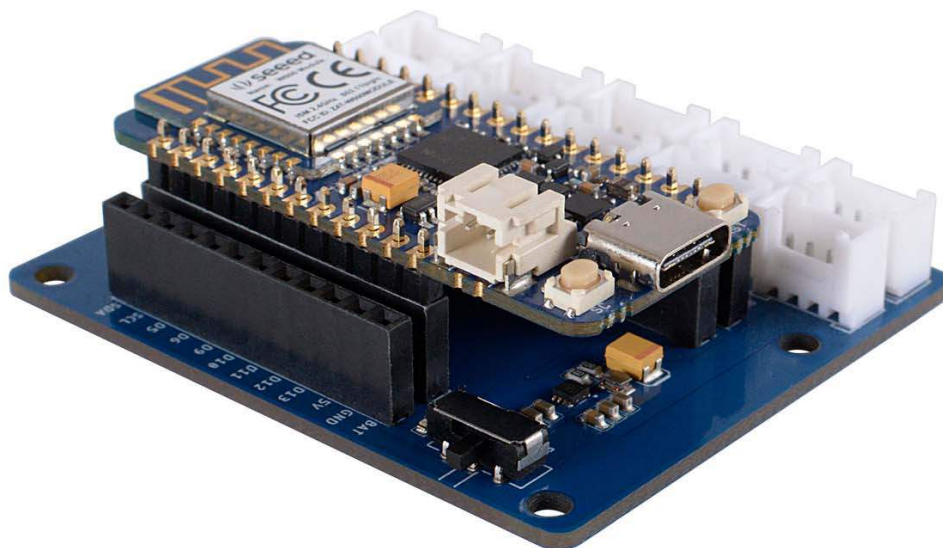
Wio Lite W600 is a cost-effective Arduino compatible board with the W600 WiFi module. The Wio Lite W600 features Atmel® | SMART™ SAM D21 ARM Cortex-M0+ based microcontroller and the W600 WiFi core is a 2.4GHz WiFi module features ARM Cortex-M3. Since the Wio Lite W600 uses SAM D21 (the same chip used in Arduino Zero) as its Arduino Core, in theory, it is fully compatible with Arduino zero.

We've broken out the SAM D21 pins, the I/O level of this board is 3.3V. There are 6 analog pins and 14 digital pins, and also one UART, one I2C, one ICSP port is available. You can power this board with 5V USB Type C and 3.5V~4.2V Lipo battery.

As for the WiFi core, it's our old friend - W600 Module. We've already released the W600 Module and Grove - W600, Wio Lite W600 is a new member of the W600 family. W600 Module features ARM Cortex-M3 with 1MB on-chip flash and freeRTOS kernel. It is CE/FCC certificated and supports 802.11 b/g/n. We also provide a full Arduino W600 library including demos for Ap/Station/Ap-Station/Transparent Transmission/TCP, etc.

Wio Lite is a new product line from Seeed, and Wio Lite W600 is the first product in this series. Similar to the great Adafruit Feather series, the Wio Lite series is small in size and uniform in pins. Different performance and features are available when equipped with different processors and modules. Actually, Wio Lite is compatible with Feather board pins, we believe Feather is a very successful development platform in the community, and there are already many cool Feather boards out there from Adafruit. The Wio Lite aims at adding different wireless solutions to enrich the Feather community and provide more possibility for Feather users.

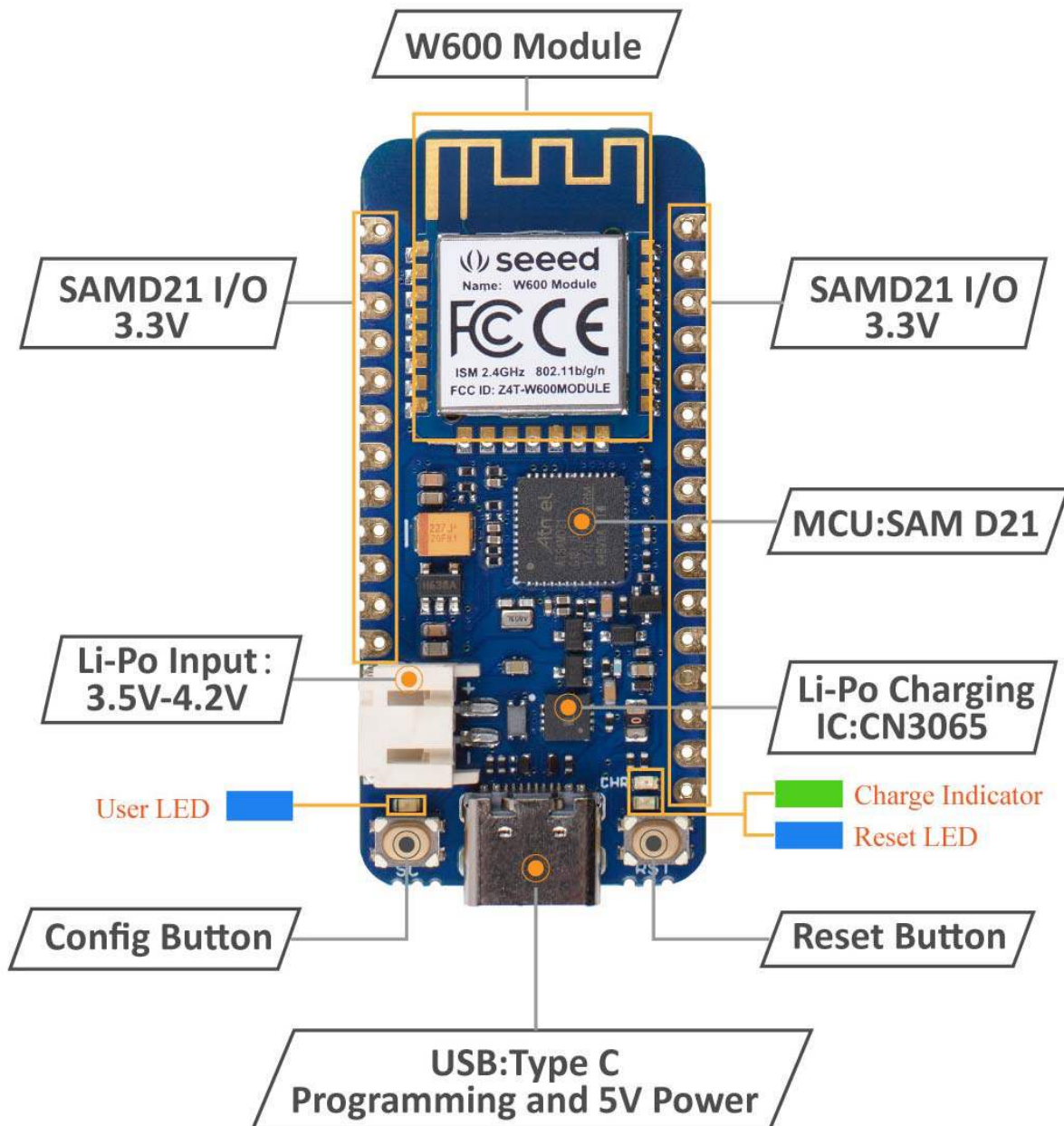
On top of that, we've released the Grove Shield for Wio Lite at the same time. With this shield, we bring over 200 Grove sensors, actuators and displays to Wio Lite series and the Feather community.



## Features

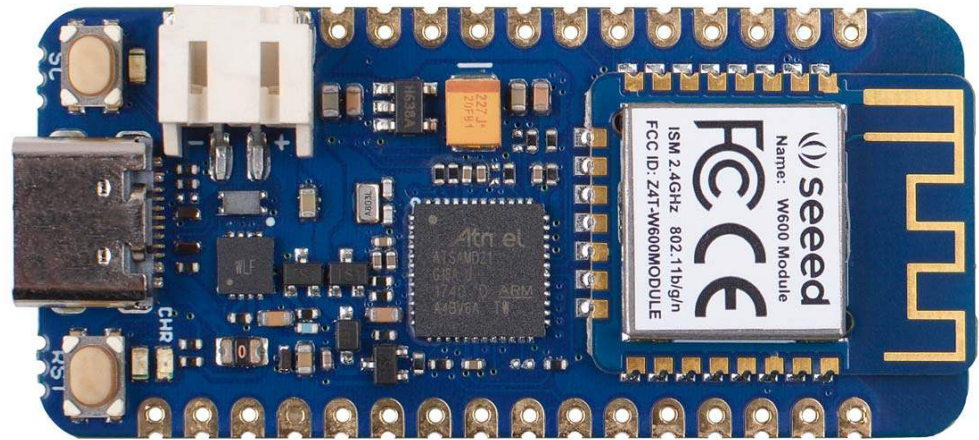
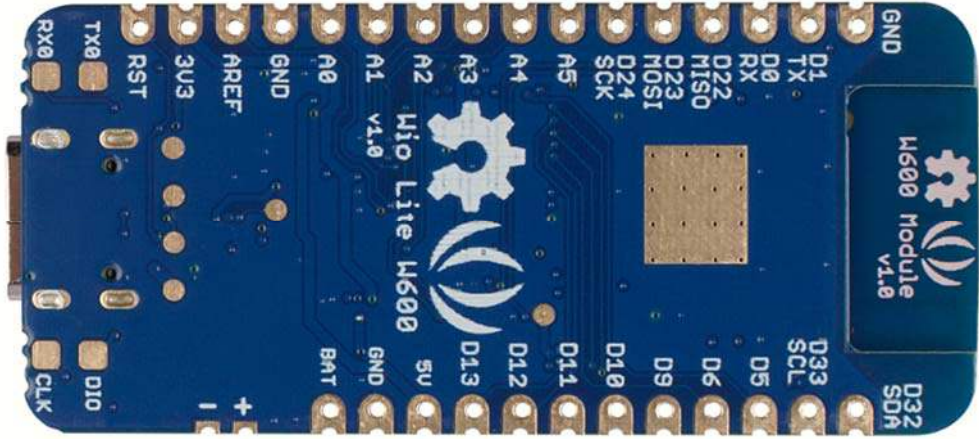
- Arduino Zero Compatible/ Adafruit Feather Compatible
- 2.4GHz onboard WiFi module supports 802.11 b/g/n
- Support 200+ Grove modules
- Cost-effective

## Hardware Overview

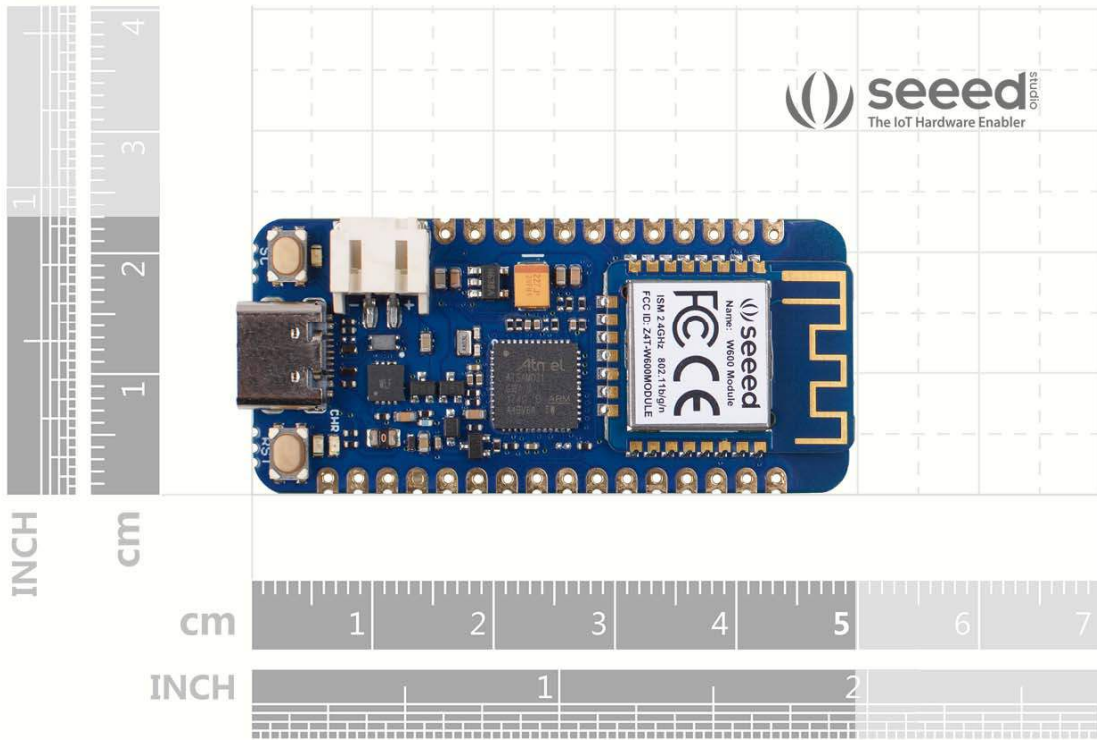
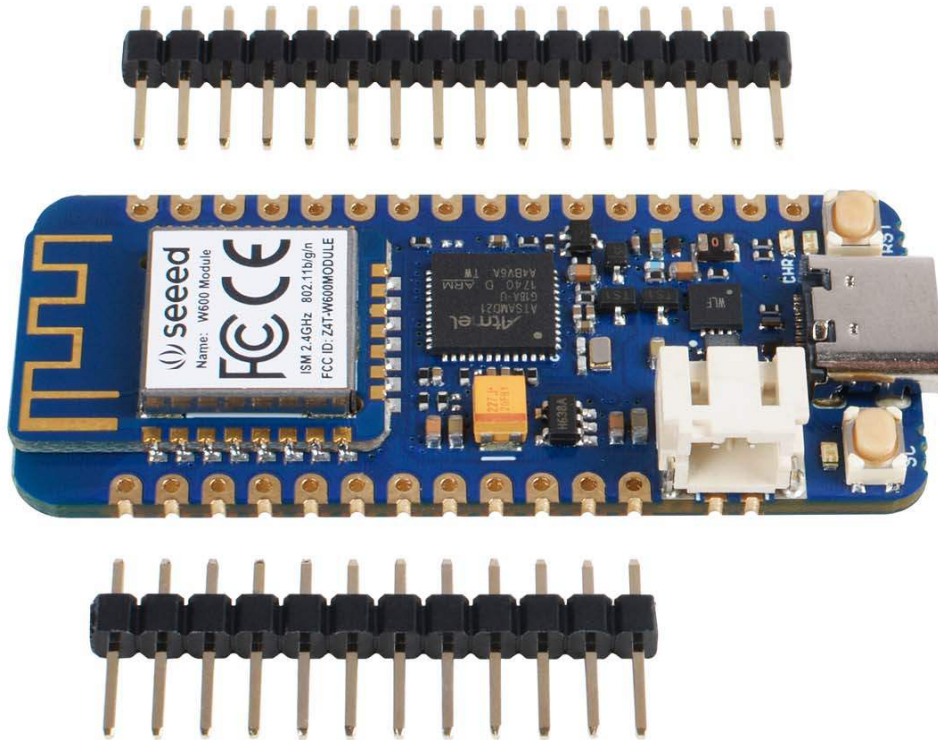


# ECCN/HTS

ECCN	EAR99
UPC	







<https://www.seeedstudio.com/Wio-Lite-W600-p-4155.html>/9-13-19