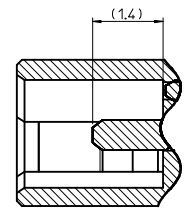


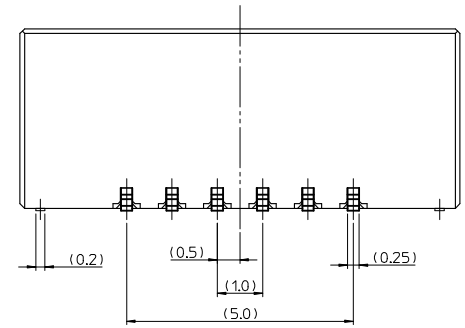
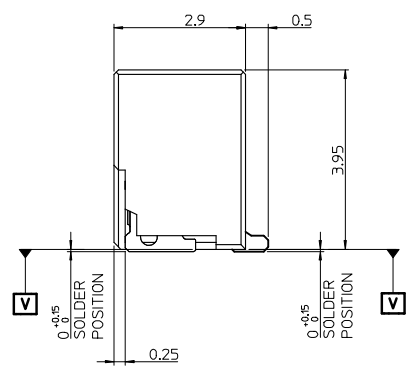
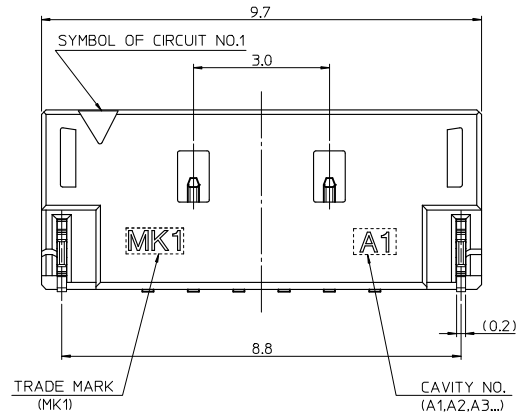
Isometric View 1
(Scale 7/1)

RECOMMENDED PCB LAY OUT
[GENERAL TOLERANCE +0.05]

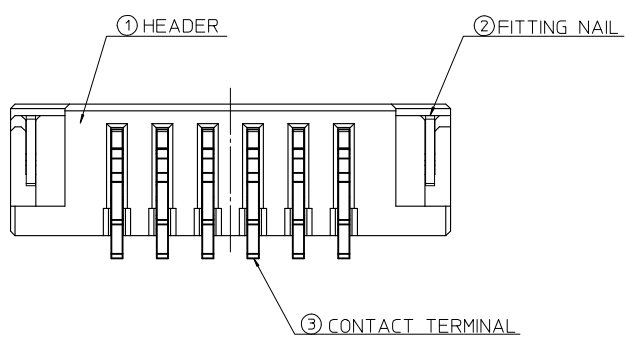
MATED CONDITION (REF.)



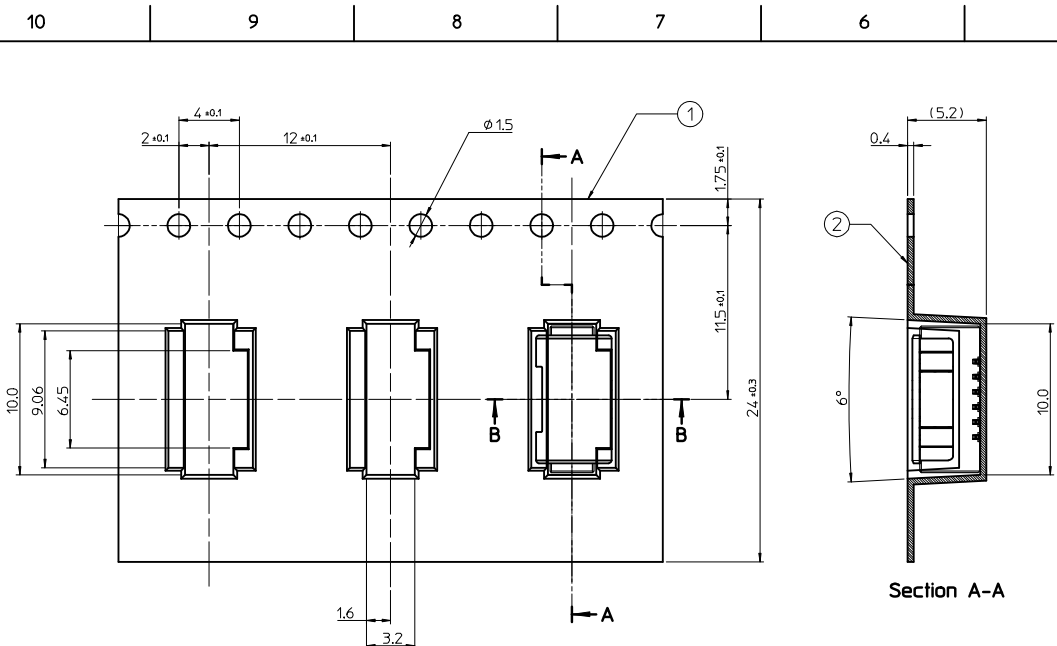
Section Z-Z
(Scale 10/1)



- NOTES.
- MATED WITH : 104128-0610/0620
 - MATERIALS.
 - HEADER : LIQUID CRYSTAL POLYMER(LCP) GLASS FILLED, UL 94V-0 HALOGEN FREE, COLOR OF NATURAL
 - CONTACT TERMINAL : PHOSPHOR BRONZE 0.25mm THICKNESS
 - FITTING NAIL : PHOSPHOR BRONZE 0.2mm THICKNESS
 - FINESHIES.
 - CONTACT TERMINAL : PURE-TIN PLATING ON OVERALL. THICKNESS : 3.0µm~5.0µm UNDER PLATING Ni OVERALL. THICKNESS : 1.25µm~3.75µm
 - FITTING NAIL : PURE-TIN PLATING ON OVERALL. THICKNESS : 3.0µm~5.0µm UNDER PLATING Ni OVERALL. THICKNESS : 1.25µm~3.75µm
 - COPLANALITH OF SOLDER TAIL (PEAK TEMP. : 260°C) BEFORE & AFTER REFLOW : 0.08MAX



RELEASED EC NO: KOR2014-0105 DRWN: SCHONG03 2014/09/29 CHKD: SHCHU 2014/09/29 APPR: YSK1M02 2014/12/24	QUALITY SYMBOLS	GENERAL TOLERANCES (UNLESS SPECIFIED)	DIMENSION STYLE	SCALE	DESIGN UNITS	THIRD ANGLE PROJECTION																		
	$\nabla = 0$ $\nabla \square = 0$	<table border="1"> <tr> <th></th> <th>mm</th> <th>INCH</th> </tr> <tr> <td>4 PLACES</td> <td>± ---</td> <td>± ---</td> </tr> <tr> <td>3 PLACES</td> <td>± ---</td> <td>± ---</td> </tr> <tr> <td>2 PLACES</td> <td>± 0.15</td> <td>± ---</td> </tr> <tr> <td>1 PLACE</td> <td>± 0.20</td> <td>± ---</td> </tr> <tr> <td>0 PLACE</td> <td>± 0.20</td> <td>± ---</td> </tr> </table>		mm	INCH	4 PLACES	± ---	± ---	3 PLACES	± ---	± ---	2 PLACES	± 0.15	± ---	1 PLACE	± 0.20	± ---	0 PLACE	± 0.20	± ---	MM ONLY	9:1	METRIC	
		mm	INCH																					
	4 PLACES	± ---	± ---																					
3 PLACES	± ---	± ---																						
2 PLACES	± 0.15	± ---																						
1 PLACE	± 0.20	± ---																						
0 PLACE	± 0.20	± ---																						
DRAFT WHERE APPLICABLE MUST REMAIN WITHIN DIMENSIONS	ANGULAR ± 3 ° MATERIAL NO. 1041270620	DRAWN BY SCHONG03 CHECKED BY SHCHU APPROVED BY YSK1M02 DATE 2014/09/29 2014/09/29 2014/12/24	TITLE 1.0MM W-T-B CONN. HEADER ASS'Y -6P (S/T) (SIDE LOCKING)	DOCUMENT NO. SD-104127-006	SHEET NO. 1 OF 1																			
SIZE A3 THIS DRAWING CONTAINS INFORMATION THAT IS PROPRIETARY TO MOLEX INCORPORATED AND SHOULD NOT BE USED WITHOUT WRITTEN PERMISSION																								



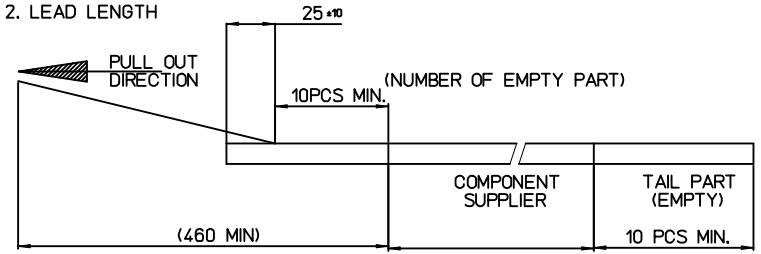
Section A-A

Section B-B

NOTES

1. QUANTITY OF CONNECTORS : 1,500 PCS/REEL

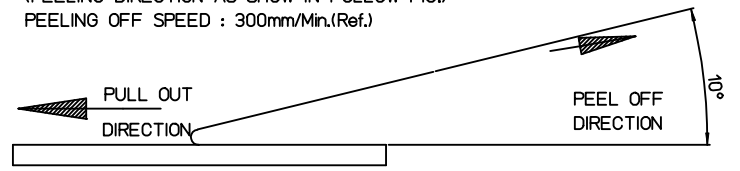
2. LEAD LENGTH



3. PEELING OFF FORCE OF COVER TAPE : 0.1N~0.59N(10.2GF~60GF)

(PEELING DIRECTION AS SHOW IN FOLLOW FIG.)

PEELING OFF SPEED : 300mm/Min.(Ref.)



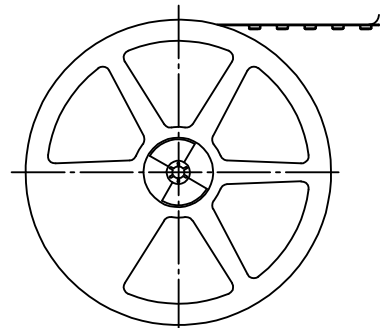
4. FLASH IN ANY PORTION SHOULD BE LESS THAN 0.20mm MAX.

5. UNLESS OTHERWISE SPECIFIED INNER R0.2 MAX

3	PLASTIC BOBBIN	HI P.S	WHITE
2	COVER TAPE	PET ANTISTATIC	
1	CARRIER (EMBOSSD) TAPE	PET ANTISTATIC	
NO.	DESCRIPTION	MATERIAL	REMARK

PULL OUT DIRECTION

PULL OUT DIRECTION



PLASTIC BOBBIN

REV	DESCRIPTION	QUALITY SYMBOLS	GENERAL TOLERANCES (UNLESS SPECIFIED)	DIMENSION STYLE	SCALE	DESIGN UNITS	THIRD ANGLE PROJECTION
	DATE	DATE	DATE	DATE	DATE	DATE	DATE
A	RELEASED	DRW: SCHONG03	2014/11/22	mm	3:1	METRIC	
	EC NO: KOR2014-0105	CHKD: SHCHU	2014/11/22	INCH			
	APPR: YSK1M02		2014/12/24				

4 PLACES	± ---	± ---
3 PLACES	± ---	± ---
2 PLACES	± 0.20	± ---
1 PLACE	± 0.25	± ---
0 PLACE	± ---	± ---
ANGULAR ± 1 °		
DRAFT WHERE APPLICABLE MUST REMAIN WITHIN DIMENSIONS		

DRAWN BY	DATE	TITLE
SCHONG03	2014/11/22	
CHECKED BY	DATE	
SHCHU	2014/11/22	
APPROVED BY	DATE	
YSK1M02	2014/12/24	
MATERIAL NO.	DOCUMENT NO.	SHEET NO.
1041270620	SD-104127-007	1 OF 1

ORDER NUMBER 104127-0620

1.0MM W-T-B CONN. HEADER ASS'Y -6P (SIDE) EMBOSSED PACKAGE

molex

THIS DRAWING CONTAINS INFORMATION THAT IS PROPRIETARY TO MOLEX INCORPORATED AND SHOULD NOT BE USED WITHOUT WRITTEN PERMISSION