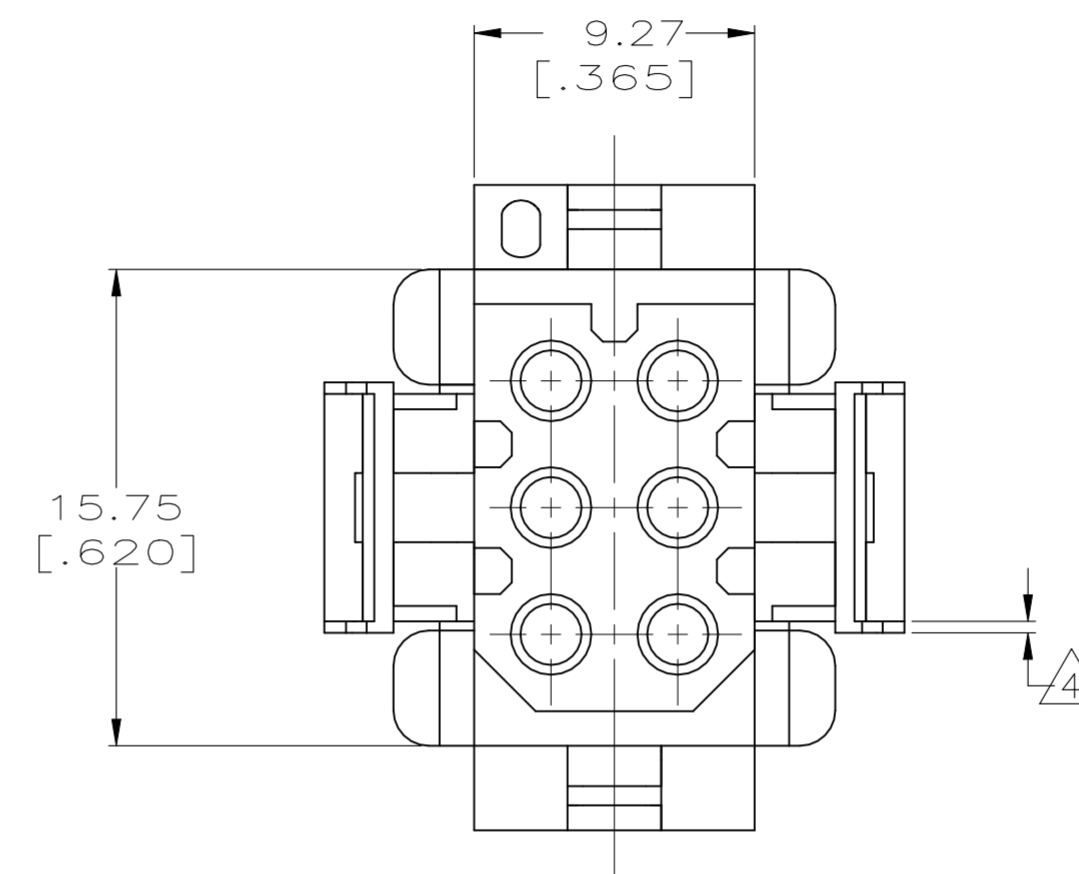
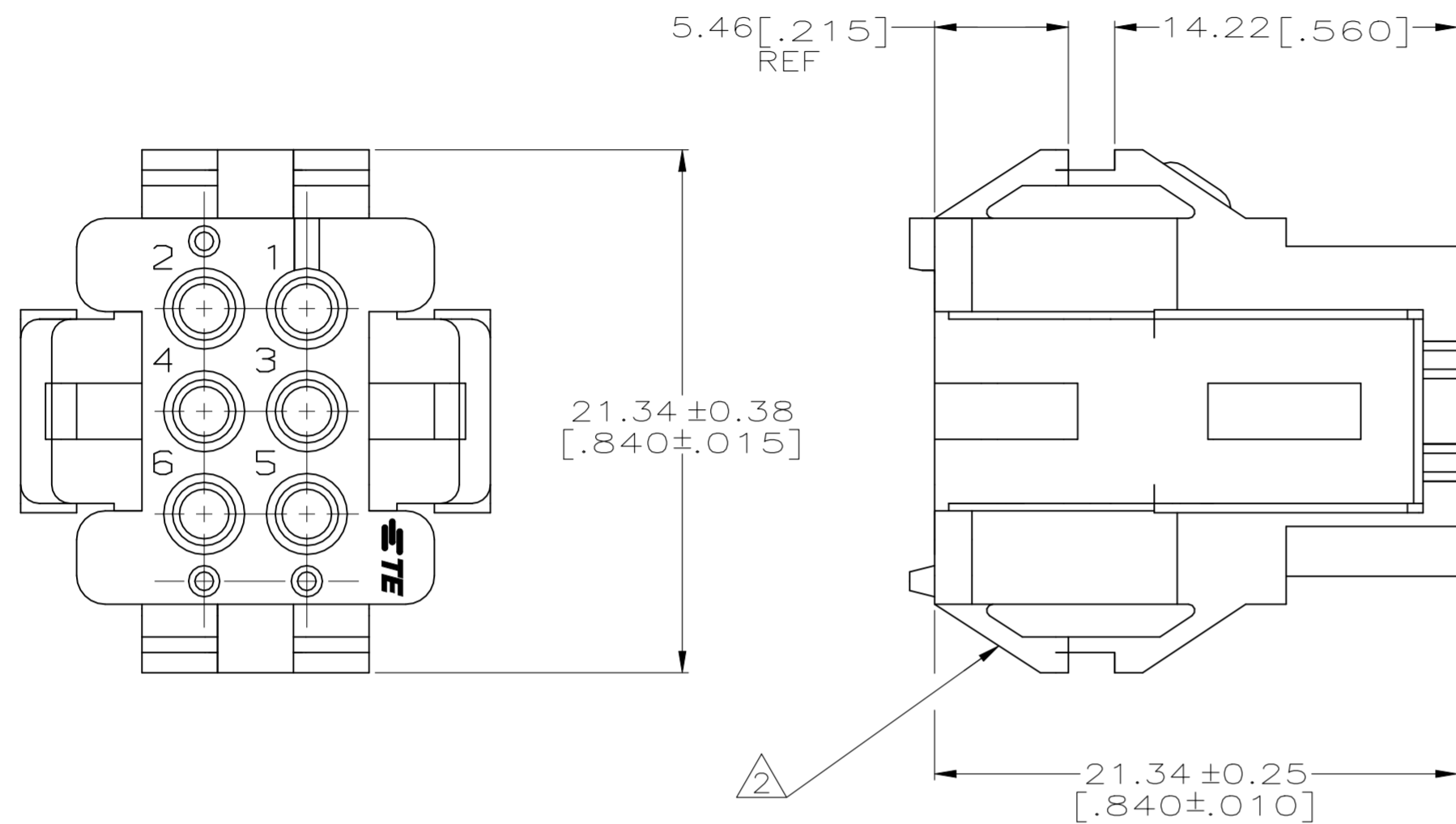
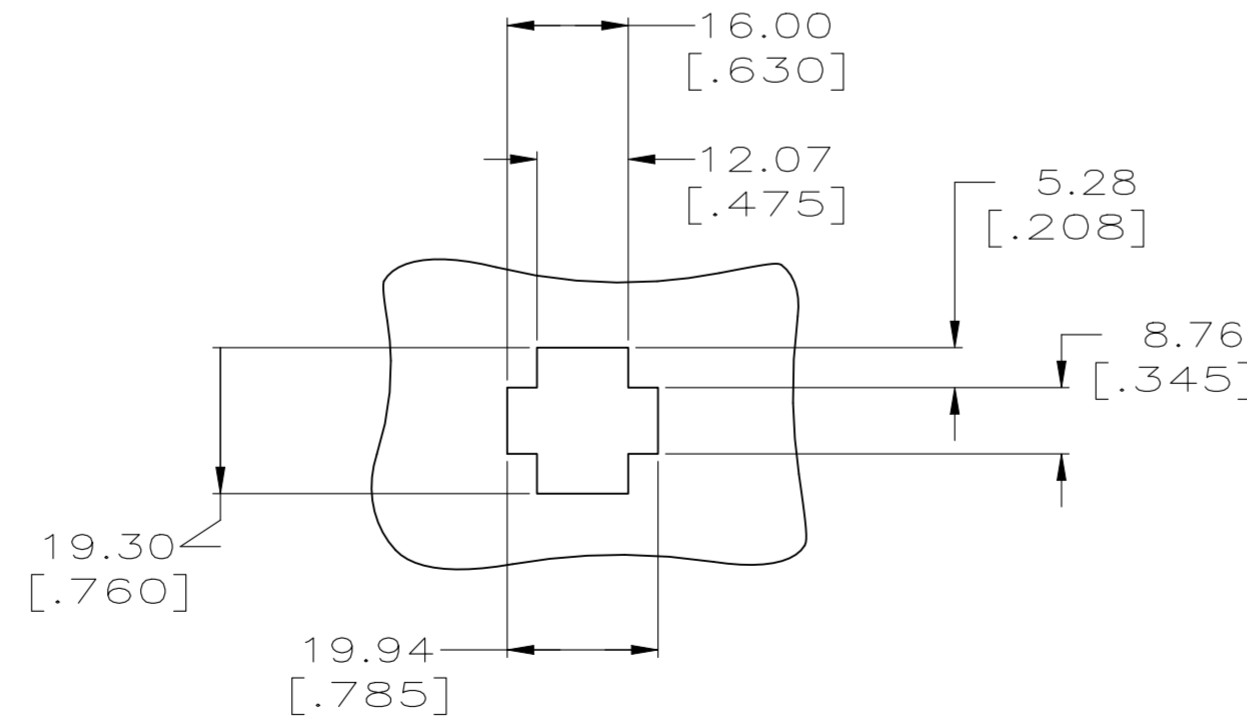
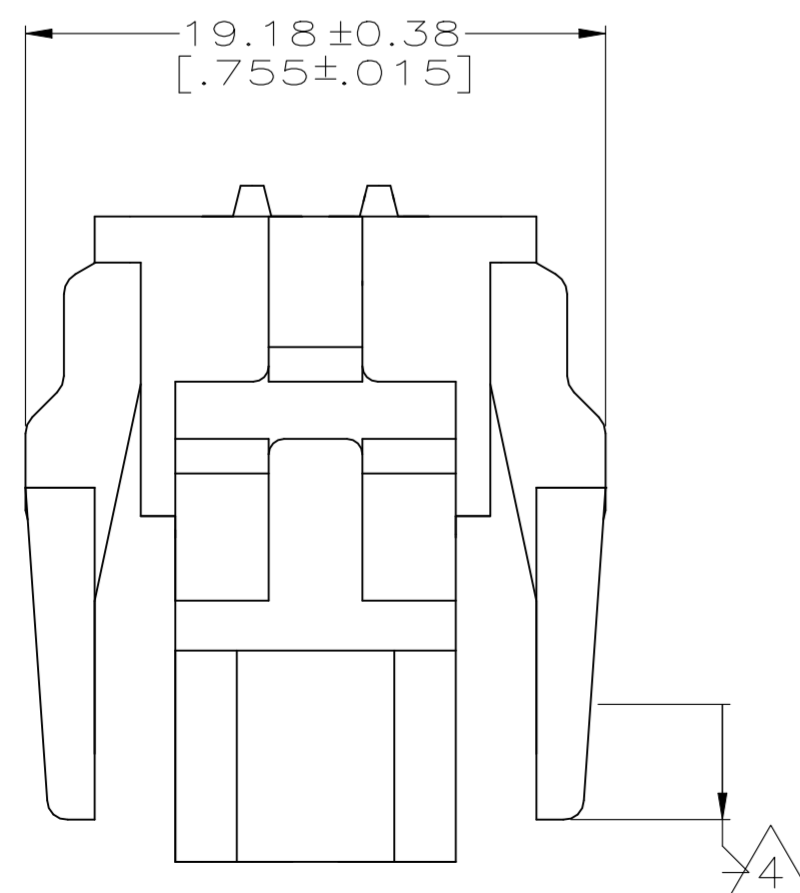


| REVISIONS |     |                           |           |     |      |
|-----------|-----|---------------------------|-----------|-----|------|
| P         | LTR | DESCRIPTION               | DATE      | DWN | APVD |
| G         |     | REVISED PER ECO-21-006874 | 29SEP2021 | RK  | MZ   |



1. MATES WITH HOUSING 640510.
2. UL LOGO AND CSA LOGO TO APPEAR ON EITHER LATCH SURFACE PER AMP SPEC 202-20, I.D. NO. 1-18838-3 AND 1-18839-3. FROST BACKGROUND OPTIONAL.
3. DIMENSIONS IN BRACKETS ARE IN INCHES.
4. NON-FILL PERMITTED UP TO 3.8[.15] FROM EDGE OF LATCH ARM ON THE 0.38[.015] THICK FLANGE, 4 PLC.
5. HOUSING MATERIAL; PA66, BLACK UL94-V0 RATED.



RECOMMENDED CUT OUT  
FOR 1.73[.068] MAX THICK PANEL  
SCALE 1:1

**METRIC**

1-640520-0  
PART NUMBER

|  |  |                                |   |                    |
|--|--|--------------------------------|---|--------------------|
| THIS DRAWING IS A CONTROLLED DOCUMENT. |  | DWN<br>R. VESTAL<br>12-01-97   | <b>STE</b> TE Connectivity                  |                    |
| DIMENSIONS:<br>mm[INCHES]              |  | CHK<br>R. SWING<br>12-01-97    |   |                    |
| TOLERANCES UNLESS OTHERWISE SPECIFIED: |  | APVD<br>A. BEDDICK<br>12-01-97 | NAME<br>HOUSING, PLUG<br>MRII<br>6 POSITION |                    |
| 0 PLC ± -                              |  | PRODUCT SPEC                   | SIZE<br>A2                                  | CAGE CODE<br>00779 |
| 1 PLC ± -                              |  | APPLICATION SPEC               | DRAWING NO<br>C-640520                      | RESTRICTED TO      |
| 2 PLC ± 0.13[.005]                     |  | WEIGHT                         | SCALE<br>4:1                                | SHEET<br>1 OF 1    |
| 3 PLC ± -                              |  | FINISH                         | REV<br>G                                    |                    |
| 4 PLC ± -                              |  |                                |   |                    |
| ANGLES ± 0° 30'                        |  |                                |   |                    |
| MATERIAL                               |  |                                |   |                    |
| 5                                      |  |                                |   |                    |