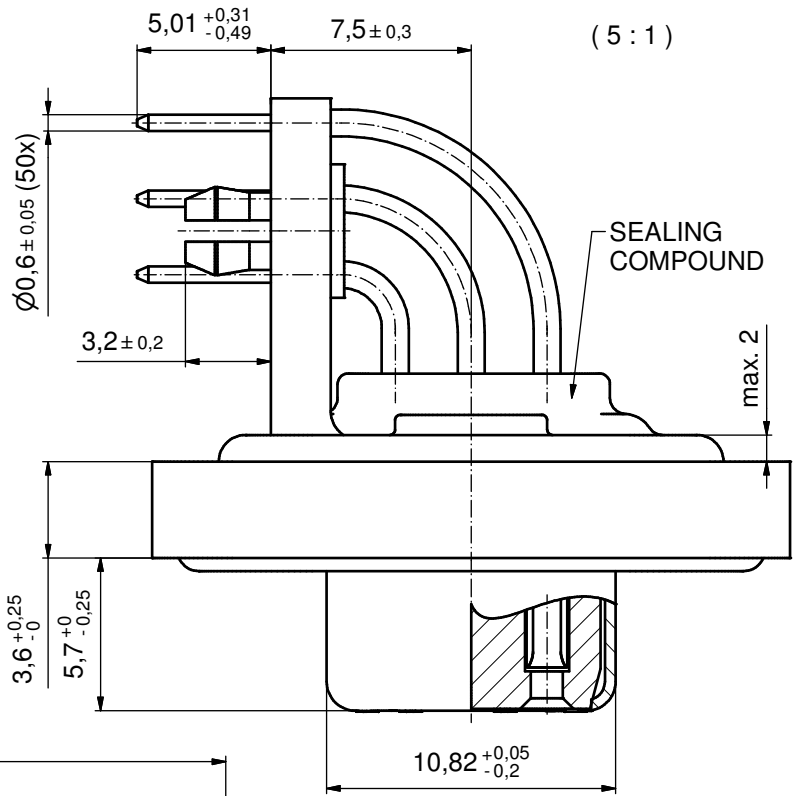
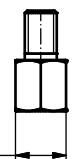
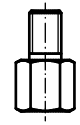
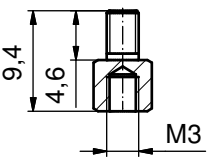
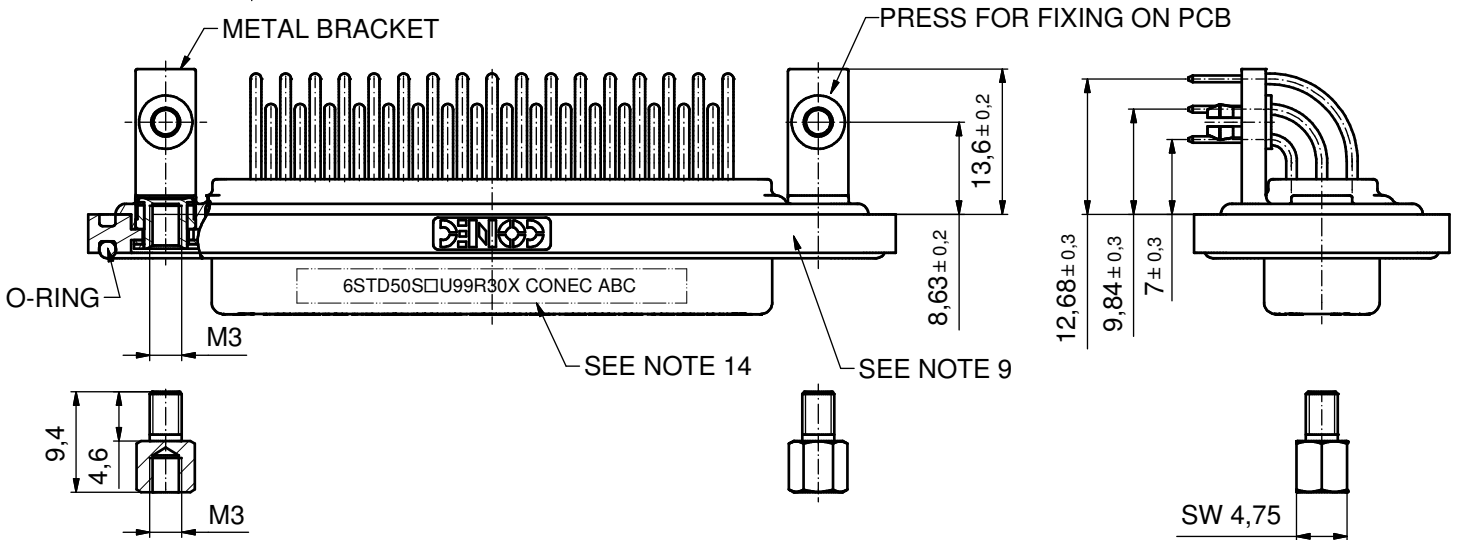
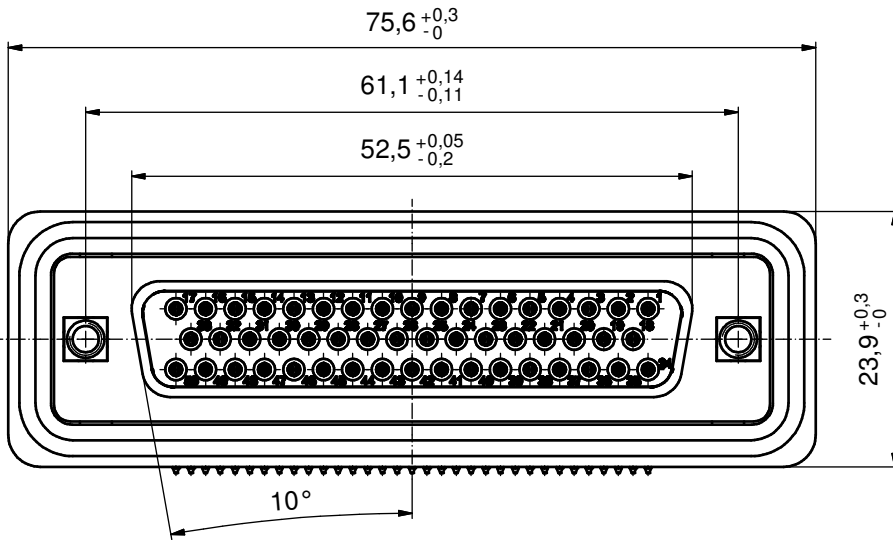


**NOTES:**

1. FOR WAVESOLDERING  
(SOLDER BATH TEMPERATURE 240°C FOR 5 SEC./  
AND SOLDER PREHEAT 120°C FOR 120 SEC. )
2. METALSHELLS: COPPER ALLOY;  
min. 315µin TIN over 40-80µin NICKEL
3. INSULATORS: PBT GF UL 94 V-0, BLACK
4. CONTACTS: COPPER ALLOY; PLATING (SEE PART NO):  
□ PLEASE ADD A for GOLD FLASH over NICKEL (PREFERRED TYPE)  
□ PLEASE ADD B for 20µin HARD GOLD over min. 50µin NICKEL  
□ PLEASE ADD C for 30µin HARD GOLD over min. 50µin NICKEL
5. THREADED INSERTS: COPPER ALLOY;  
min. 200µin TIN over 80µin NICKEL
6. COLLARS: COPPER ALLOY; NICKEL PLATED
7. METAL BRACKETS: ZINC DIE CAST;  
300µin COPPER/ 40-120µin NICKEL/ 120-200µin TIN
8. HEXLOCKING SCREWS: STAINLESS STEEL
9. FRAME: ZINC DIE CAST; NICKEL PLATED
10. O-RING: SILICON; BLUE
11. SEALING COMPOUND: PUR; BLUE
12. P.C.B. HOLE DRILLINGS and  
RECOMMENDED PANEL CUT-OUT ON SHEET 2
13. RECOMMENDED TORQUE FOR MOUNTING SCREW  
35Ncm (3,1in.LB)/max. 40Ncm (3,5 in.LB)
14. CONNECTOR IS PART MARKED: 6STD50S□U99R30X CONEC ABC



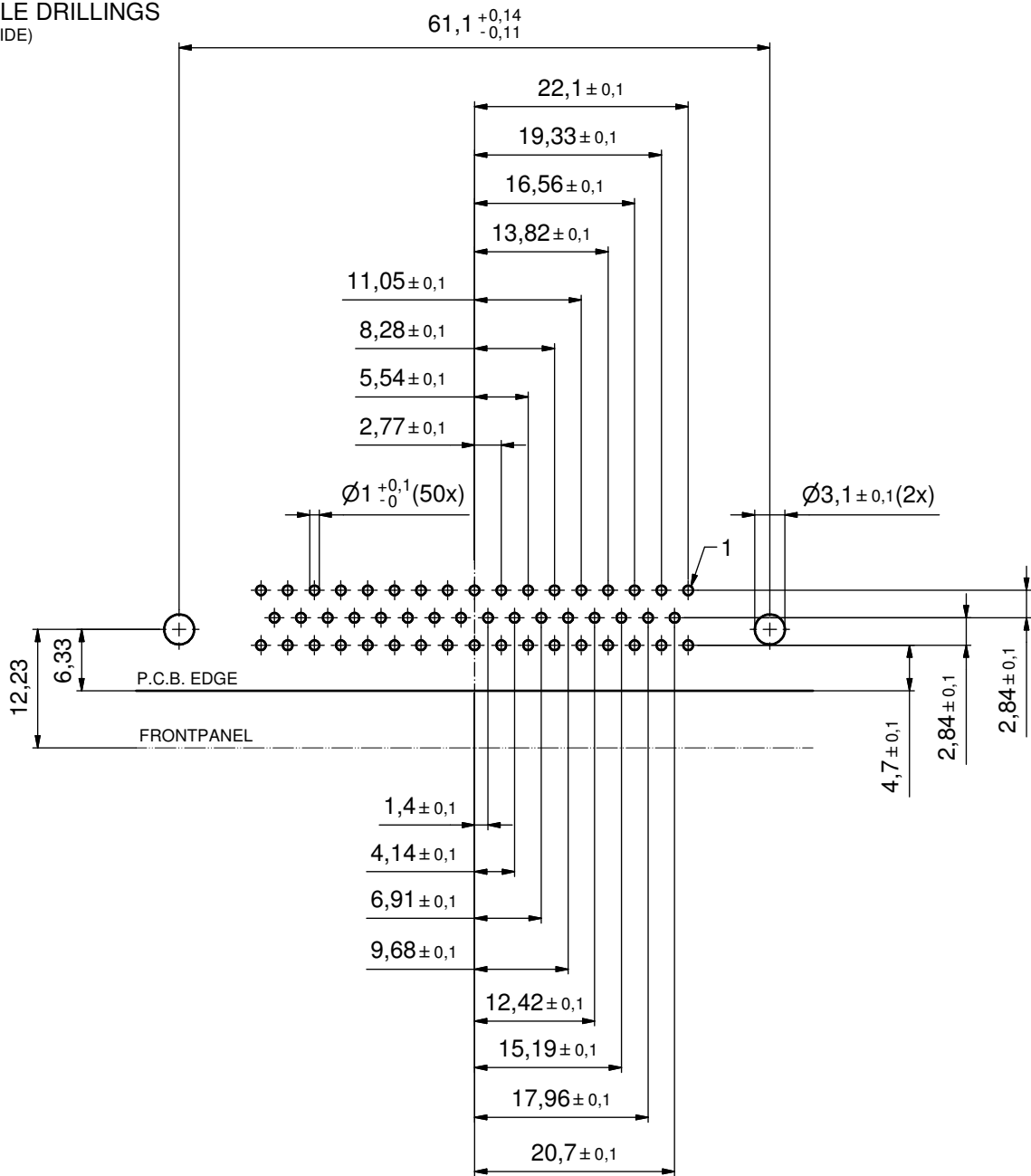
AT ALL TIMES WATER RESISTANT CONNECTORS NOT IN USE SHOULD BE COVERED WITH A CONEC WATER RESISTANT CAP OR WATER TIGHT HOOD.



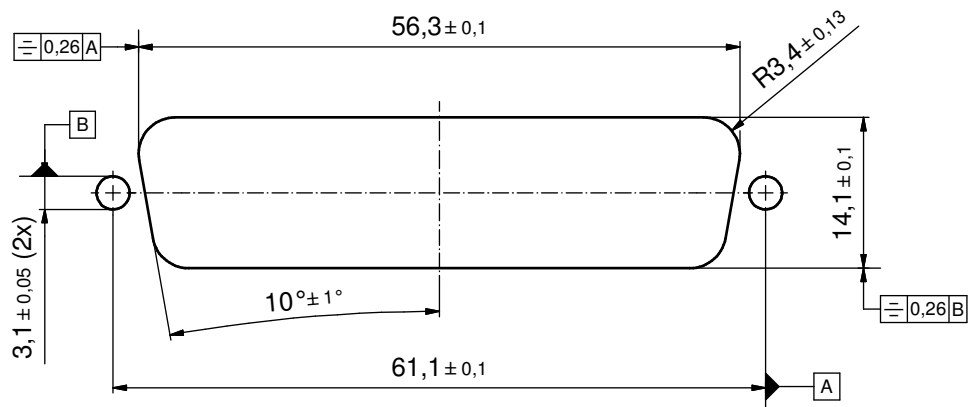
Directive 2002/95/EC RoHS compliant

THIS DRAWING MAY NOT BE COPIED OR REPRODUCED IN ANY WAY, AND MAY NOT BE PASSED ON TO A THIRD PARTY WITHOUT WRITTEN PERMISSION. OWNERSHIP AND COPYRIGHT OF CONEC GmbH DO NOT ALTER CAD DRAWING BY HAND	tolerance		dim. in mm	scale: 2:1 (5:1)		
				material: SEE NOTES		
	drawn	24.01.13	name	title: <b>D-SUB FEMALE 90°</b> 50pos. SOLDER PIN ANGLED with threaded insert, metal bracket, snap, hex bolt		
	appd.	24.01.13	Fischer			
	norm					
d-old						
a	Original			dwg no: 15K1A1259		
rev.	description			date	name	part no: 6STD50S□U99R30X (see note 4)
				DIN-A3 sh: 1/2		

P.C.B. HOLE DRILLINGS  
(P.C.B. TOP SIDE)



RECOMMENDED PANEL CUT-OUT



THIS DRAWING MAY NOT BE COPIED OR REPRODUCED IN ANY WAY, AND MAY NOT BE PASSED ON TO A THIRD PARTY WITHOUT WRITTEN PERMISSION. OWNERSHIP AND COPYRIGHT OF CONEC GmbH DO NOT ALTER CAD DRAWING BY HAND				tolerance	dim. in mm	scale:	2:1	
				date		name	material:	SEE SHEET 1
	drawn	24.01.13	Henneboel		title:			<b>P.C.B. HOLE DRILLINGS</b> D-SUB FEMALE 50pos. SOLDER PIN ANGLED with threaded insert, metal bracket, snap, hex bolt
	appd.	24.01.13	Fischer		dwg no:			
	norm				DIN-A3			
	d-old				part no:			sh: 2/2
	a	Original						15K1A1259
rev.	description	date	name	part no:				SEE SHEET 1