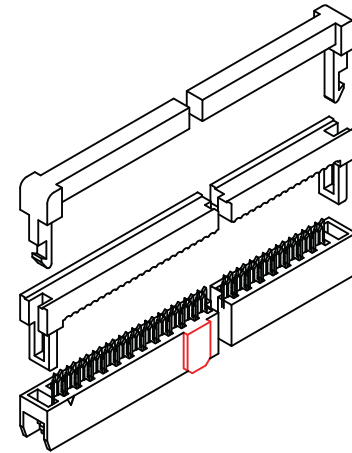
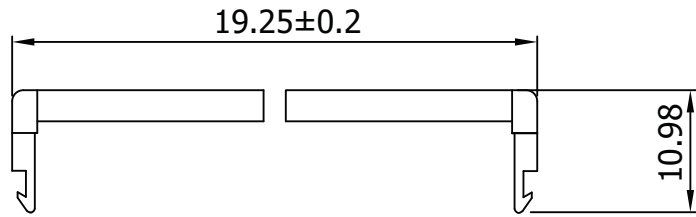
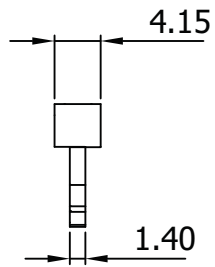


A



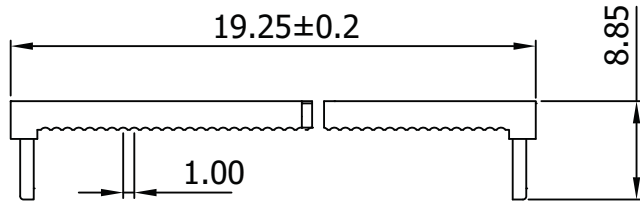
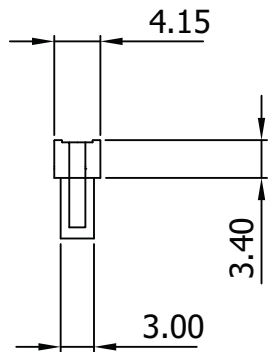
A

B

SR

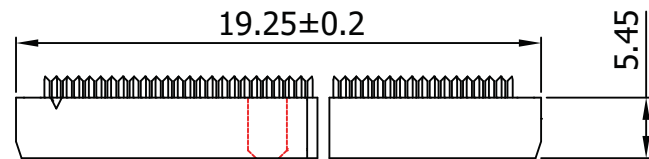
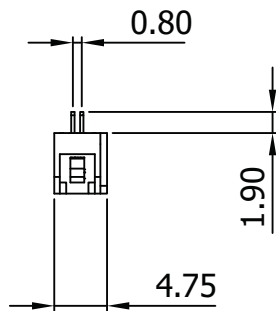
# I.D.C SOCKET DUAL-ROW

C



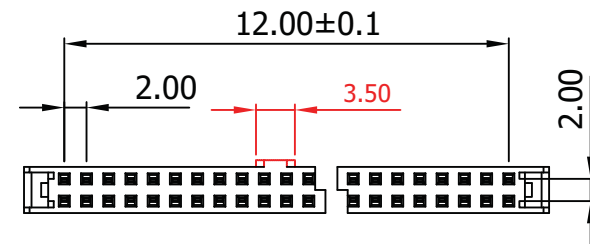
B

D



D

E



E

F

### Material:

- Insulator: P.B.T. 30% Glass Fiber, UL 94V-0
- Contact Material: Phosphor Bronze, Gold flash over Nickel

### Electrical:

- Current Rating: 1Amp DC
- Insulation Resistance: 1,000MΩ Min.
- Dielectric Withstanding: 500V AC
- Operating Temperature: -55°C ~ +105°C

F

Unit: MM±0.30MM

G

Scale	1:1						Name	Item No.	
TOLERANCE							Drawn	10.19.11	
X.X	±0.40						Approved	Chappell	
X.XX	±0.25								
X.XXX	±0.15								
Angle	±3°								
Modification								Date	Name

<b>AWP2-14-7241-T-R</b>	
<b>Title</b> IDC-Socket - 2.00MM Pitch, Gold Flash, Central Lug w/Strain Relief, 14 Contacts	
Drawing No.	rev00
Replace	Sheet



H