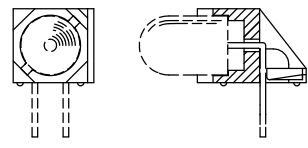
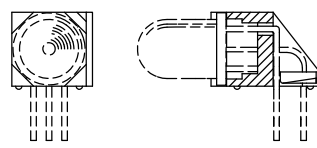
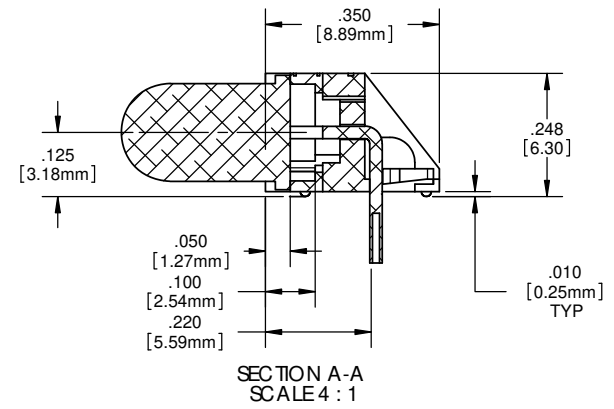
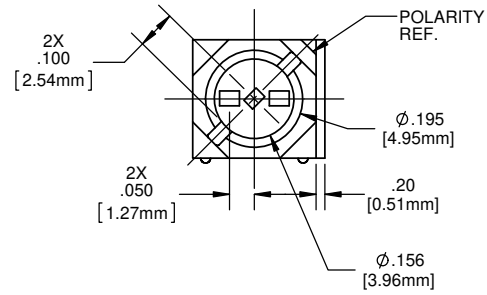
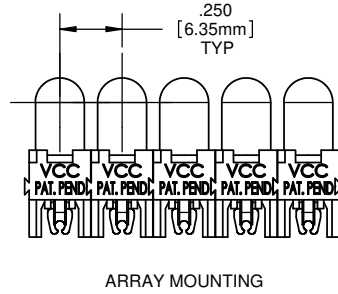
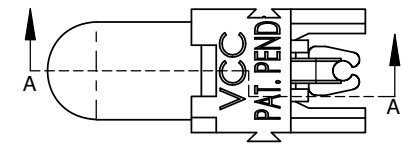
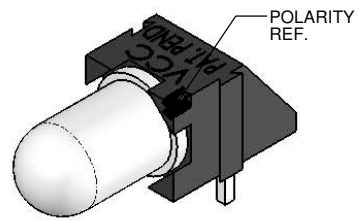
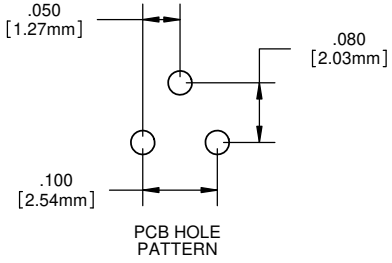


- NOTES:
- LED MOUNTING: for 5mm LEDs - round or rectangular shape with or without flange. Bi-lead, standard .100 [2.54mm] lead spacing. Tri-lead, either .050 [1.27mm] or .100 [2.54mm] lead spacing. Both the bi-lead and tri-lead LEDs can also be combined in arrays with one another.
  - ASSEMBLY: Can be used as a single LED mount or banded together in an array with its dovetail interlocking feature. When banded together with the PCH 175 the LEDs are on .250 [6.35mm] centers.
  - MATERIAL: Housing - Nylon 6/6, U.L. 94 V0 Rating, Color black (unless otherwise spec.)
  - U.S. & Foreign Pat. Issued & Pend.
  - LED shown for illustrative purposes.

REVISIONS				
ECN#	REV.	DESCRIPTION	DATE	INITIALS
	001	REVISED PER EC R111009AZD1	6-20-10	SMU
	002	CORRECTED FORMAT FOR "A" DRAWING & NEW TITLEBLOCK	8/29/14	MB



**PROPRIETARY AND CONFIDENTIAL**  
 THE INFORMATION CONTAINED IN THIS DRAWING IS THE SOLE PROPERTY OF VISUAL COMMUNICATIONS COMPANY, LLC. ANY REPRODUCTION IN PART OR AS A WHOLE WITHOUT THE WRITTEN PERMISSION OF VISUAL COMMUNICATIONS COMPANY, LLC IS PROHIBITED.

DIMENSION STYLE: INCHES (MM) GENERAL TOLERANCES UNLESS OTHERWISE SPECIFIED	
INCHES	MM
.X ± .020 ± .508	
.XX ± .010 ± .254	
.XXX ± .005 ± .127	
ANGLE ± 1°	
BREAK ALL CORNERS AND SHARP EDGES .030 MAX	
THIRD ANGLE PROJECTION	

MATERIAL NYLON 6/6, UL 94-V0, BLACK (UNLESS OTHERWISE SPEC.)	
FINISH	
APPROVAL	DATE
DRAWN: SMU	6/20/10
CHECKED: DZ	6/20/10
DO NOT SCALE DRAWING	

 12780 DANIELSON CT, SUITE A, POWAY, CA 92064 U.S.A PHONE (800) 522-5546 EMAIL: vccsales@vcc-lite.com		TITLE: <b>P-C-LITE® RT ANGLE MOUNT</b>	
		PART # <b>PCH_175</b>	SIZE <b>B</b>
DRAWING # <b>PCH 175</b>		REV <b>002</b>	
SCALE: 1:1		SHEET 1 OF 1	