



Undervoltage release 24 V AC, 50/60 Hz with screw terminal for circuit breaker 3RV2

| General technical data   |  |
|--|--|
| product brand name   | SIRIUS   |
| product designation  | undervoltage release                             |
| size of the circuit-breaker  | S00, S0, S2, S3                                  |
| suitability for use  | motor circuit breaker                            |
| protection class IP on the front acc. to IEC 60529                 | IP20   |
| touch protection on the front acc. to IEC 60529                    | finger-safe, for vertical contact from the front |
| design of short-circuit protection                                 | fuse   |
| degree of pollution  | 3  |
| insulation voltage rated value                                     | 690 V  |
| insulation voltage with degree of pollution 3 at AC rated value    | 690 V  |
| ambient temperature  |  |
| • during storage   | -50 ... +80 °C                                   |
| • during operation   | -20 ... +60 °C                                   |
| reference code acc. to DIN EN 61346-2                              | F  |
| Auxiliary circuit  |  |
| number of NC contacts for auxiliary contacts instantaneous contact | 0  |
| number of NO contacts for auxiliary contacts instantaneous contact | 0  |
| number of NO contacts for auxiliary contacts leading contact       | 0  |
| number of CO contacts of auxiliary contacts instantaneous contact  | 0  |
| Control circuit/ Control   |  |
| type of voltage of the control supply voltage                      | AC   |
| control supply voltage frequency                                   |  |
| • 1  |  |
| — initial rated value  | 50 Hz  |
| — final rated value  | 60 Hz  |
| control supply voltage   |  |
| • 1  |  |
| — at AC  |  |
| — at 50 Hz rated value   | 24 V   |
| — at 60 Hz rated value   | 24 V   |
| Installation/ mounting/ dimensions                                 |  |
| fastening method   | snap-on mounting                                 |
| width  | 18.5 mm  |

|                                |                           |                   |
|--------------------------------|---------------------------|-------------------|
| height                         | 90 mm                     |                   |
| depth                          | 68 mm                     |                   |
| <b>Certificates/ approvals</b> |                           |                   |
| certificate of suitability     | CE / UL / CSA             |                   |
| General Product Approval       | Declaration of Conformity | Test Certificates |



[Miscellaneous](#)

[Special Test Certificate](#)

|                   |                   |
|-------------------|-------------------|
| Test Certificates | Shipping Approval |
|-------------------|-------------------|

[Type Test Certificates/Test Report](#)



|                   |       |         |
|-------------------|-------|---------|
| Shipping Approval | other | Railway |
|-------------------|-------|---------|



[Confirmation](#)



[Vibration and Shock](#)

**Further information**

Information- and Downloadcenter (Catalogs, Brochures,...)

<https://www.siemens.com/ic10>

Industry Mall (Online ordering system)

<https://mall.industry.siemens.com/mall/en/en/Catalog/product?mlfb=3RV2902-1AB0>

Cax online generator

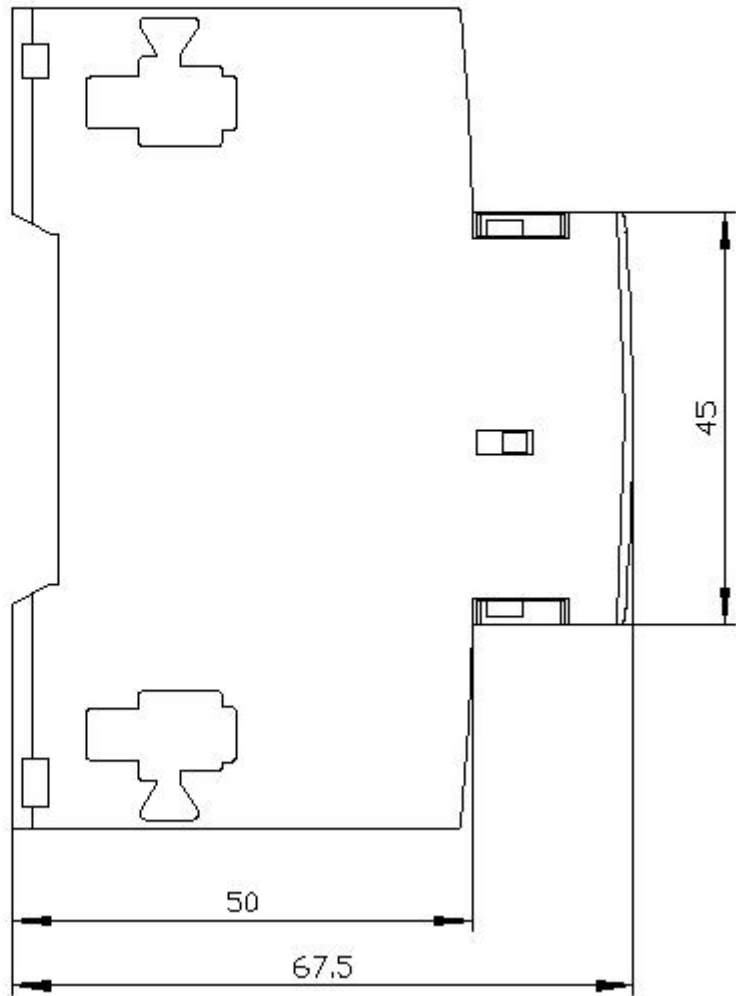
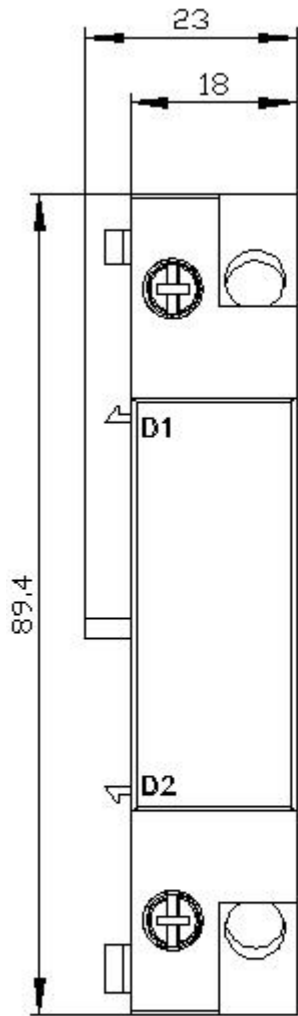
<http://support.automation.siemens.com/WW/CAXorder/default.aspx?lang=en&mlfb=3RV2902-1AB0>

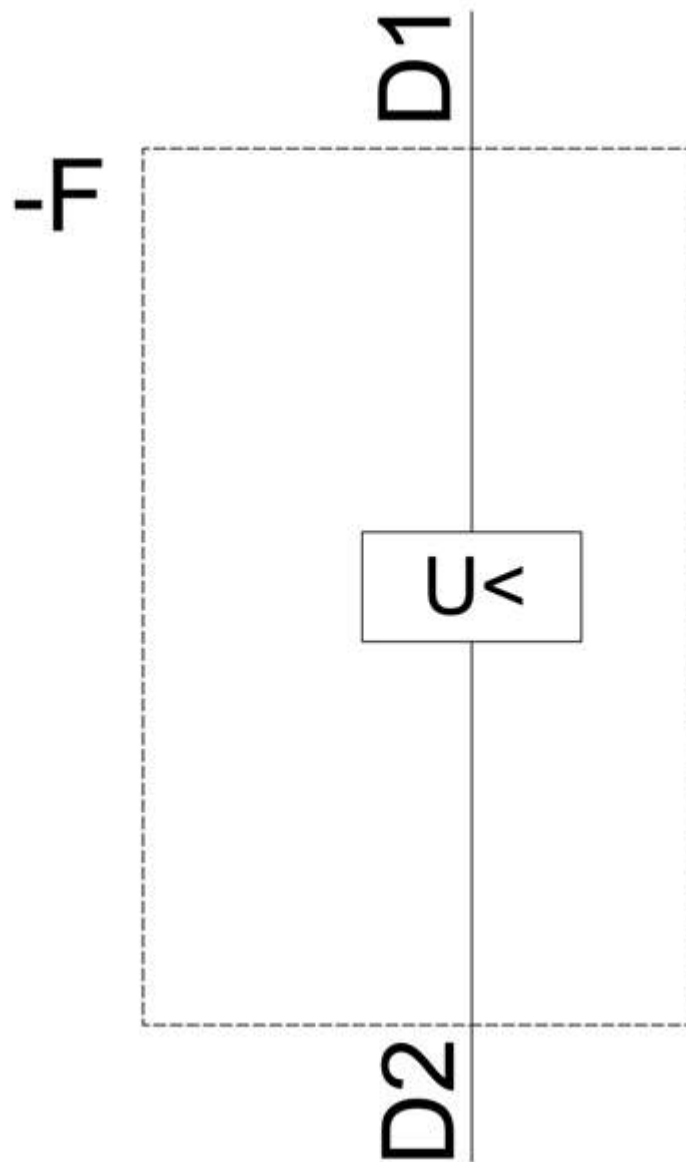
Service&Support (Manuals, Certificates, Characteristics, FAQs,...)

<https://support.industry.siemens.com/cs/ww/en/ps/3RV2902-1AB0>

Image database (product images, 2D dimension drawings, 3D models, device circuit diagrams, EPLAN macros, ...)

[http://www.automation.siemens.com/bilddb/cax\\_de.aspx?mlfb=3RV2902-1AB0&lang=en](http://www.automation.siemens.com/bilddb/cax_de.aspx?mlfb=3RV2902-1AB0&lang=en)





last modified:

12/15/2020 