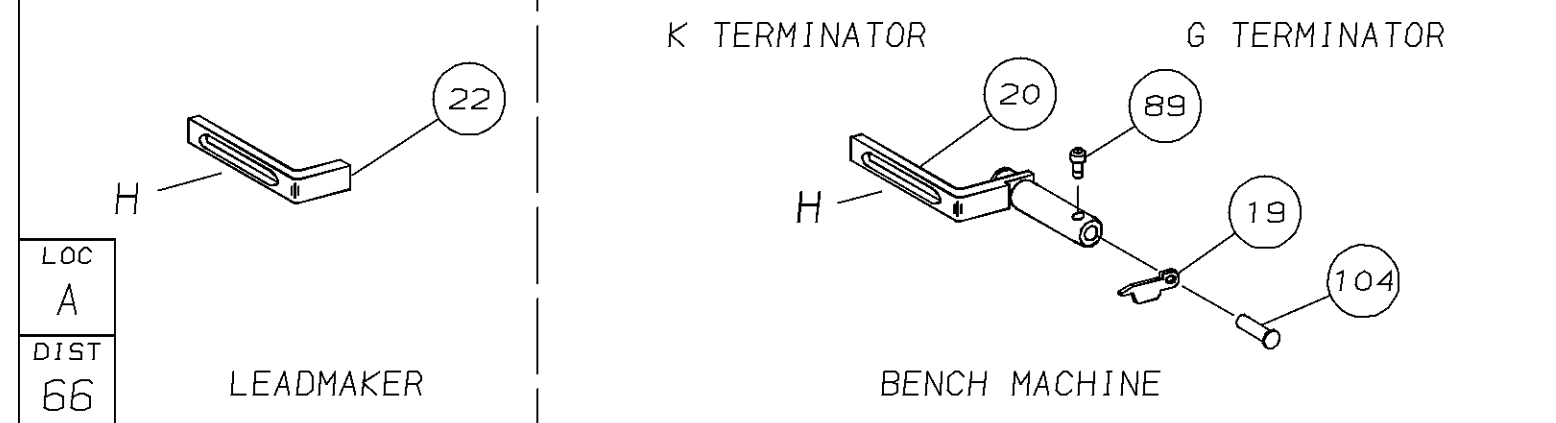
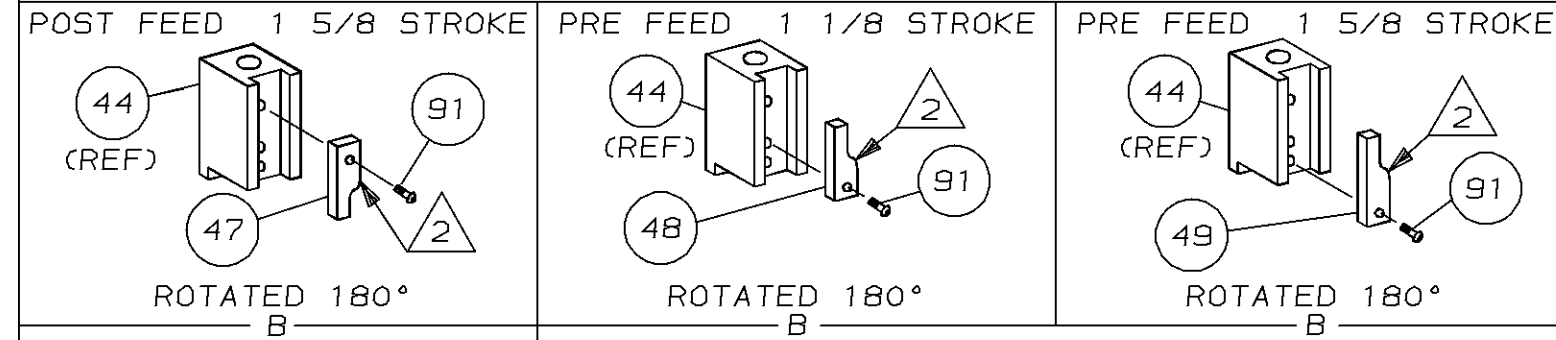
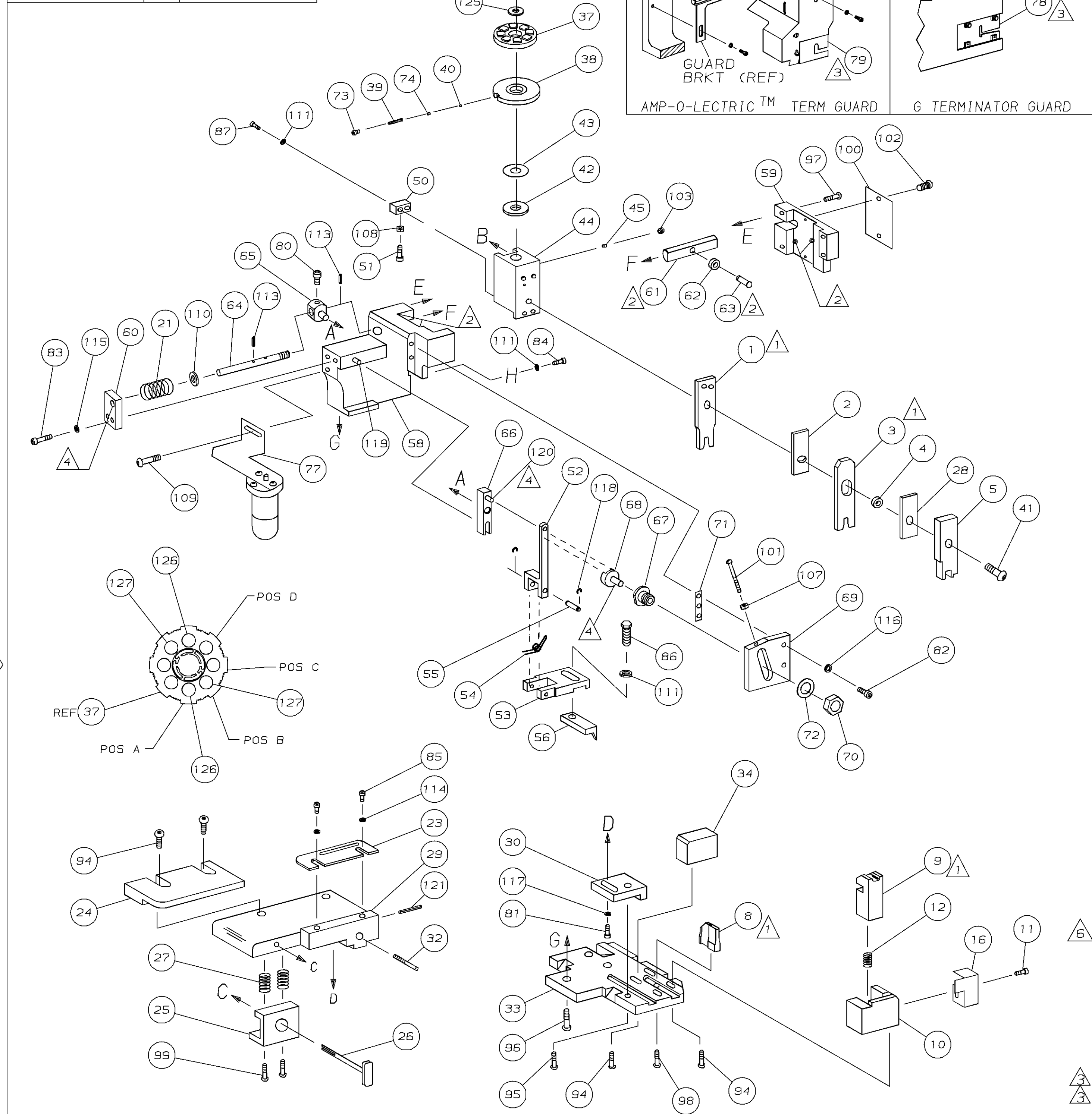
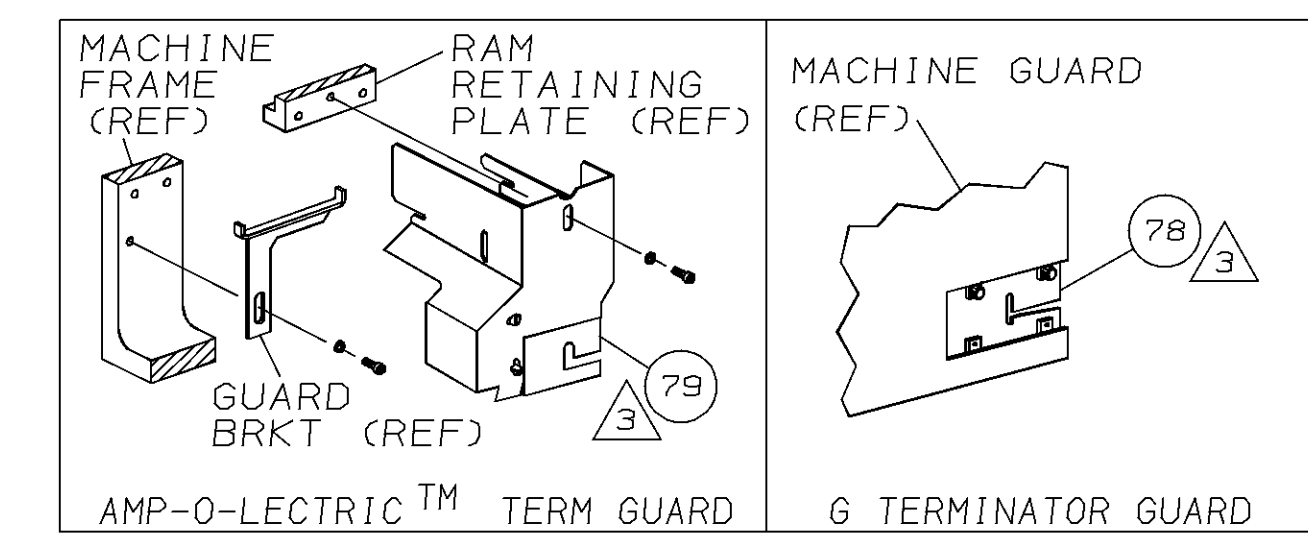


PART NUMBER	REV	FIRST USED
680292-1	A	122500-1
680292-2	A	565435-5
680292-3	A	354500-1



LOC A
DIST 66
AMP 3308 REV 3-92
22 MAY 1996 15:45:54 AMP18717



TERMINAL NAME: STANDARD		CRIMPING DATA	
167041			
PAD LTR	CRIMP HEIGHT	WIRE SIZE	
A	.021 ± .002 [0.53 ± 0.05mm]	#28	
B	.020 ± .002 [0.51 ± 0.05mm]	#30 OR #32	
C	NOT	USED	
D	NOT	USED	
CRIMP	SIZE	TYPE	RANGE
WIRE	.033 [0.84mm]	F	#32 - #28
INSUL	.050 [1.27mm]	0	.020 - .040
WIRE STRIP LENGTH	TERM APPL SPEC	FEED	APPL INSTRUCTION
-	114-25021	.300	408-8040
		SET UP GAGE	LAYOUT
		458637-1	L1756

QTY	REQD	PER	ASSY	PART NO	DESCRIPTION	ITEM NO
2	2	2	-	8-354779-0	PIN, WIRE DISC (.3390)B	127
2	2	2	-	7-354779-9	PIN, WIRE DISC (.3385)A	126
1	1	1	-	986950-1	WASHER, FLAT PRECISION	125
1	1	1	-	217238-1	DOCUMENTATION PACKAGE	124
1	1	1	-	4088040	SF APPL INST 408-8040	123
1	1	1	-	4-21028-0	PIN, SLT SPR (φ.093x.75) ST GDE PL	121
REF	REF	REF	-	1-21030-1	PIN, DOWEL (φ.187x.50) LEVER	120
REF	REF	REF	-	1-21030-6	PIN, DOWEL (φ.187x1.25) HOUSING	119
REF	REF	REF	-	21045-3	RING, RET "C" (φ.187) FD FING PIN	118
1	1	1	-	21024-5	WASHER, LOCK (#10) ADJ BLOCK	117
REF	REF	REF	-	21024-5	WASHER, LOCK (#10) ADJ PLATE	116
REF	REF	REF	-	21024-5	WASHER, LOCK (#10) FEED GDE ROD	115
2	2	2	-	21024-2	WASHER, LOCK (#4) FRONT STP GUIDE	114
REF	REF	REF	-	5-21028-1	PIN, SLT SPR (φ.125x.50) ADJ ROD	113
4	4	4	-	21024-4	WASHER, LOCK (#8) STRIPPER	111
REF	REF	REF	-	21899-4	WASHER, FLAT (φ5/16) SCREW ADJ	110
-	1	-	-	2-21002-6	SCR, BHC (10-32x.38) LUBE ASSY	109
1	1	1	-	21018-5	NUT, HEX (NO. 6) HOLDDOWN	108
REF	REF	REF	-	21018-5	NUT, HEX (6-32) FEED ADJ	107
1	1	-	-	992031-1	PIN, CLEVIS	104
1	1	1	-	21009-2	SCR, SKT SET (1/4-20x.25 LW) RAM	103
2	2	2	-	21017-2	SCR, DRIVE (#2x.19) ID PLATE	102
REF	REF	REF	-	6-23715-5	SCR, PAN HD (6-32x1.50) FEED ADJ	101
1	1	1	-	461264-1	PLATE, IDENTIFICATION	100
2	2	2	-	3-21002-0	SCR, BHC (10-32x.88) DRAG	99
1	1	1	-	22733-8	SCR, BHC (8-32x.38 LW) ANVIL	98
REF	REF	REF	-	2-21002-9	SCR, BHC (10-32x.75) CAP	97
REF	REF	REF	-	2-22733-8	SCR, BHC (1/4-20x.62) HOUSING	96
REF	REF	REF	-	2-21002-7	SCR, BHC (10-32x.50) SG ADJ BLOCK	95
6	6	6	-	2-21002-2	SCR, BHC (8-32x.50) TERM H DWN	94
1	1	1	-	1-21002-7	SCR, BHC (6-32x.38) CAM	91
1	1	-	-	7-21000-9	SCR, SHC (4-40x.19) STRIPPER	89
2	2	2	-	2-21000-7	SCR, SHC (8-32x.48) DEP-HOLD	87
1	1	1	-	2-22603-0	SCR, HEX HD (8-32x.31) FEED FINGER	86
2	2	2	-	1-21000-3	SCR, SHC (4-40x.25) F ST GUIDE	85
1	1	1	-	2-21000-7	SCR, SHC (8-32x.50) STRIPPER	84
REF	REF	REF	-	3-21000-7	SCR, SHC (10-32x.75) FEED ROD GD	83
REF	REF	REF	-	3-21000-6	SCR, SHC (10-32x.62) FD ADJ BLK	82
1	1	1	-	3-21000-4	SCR, SHC (10-32x.38) SG ADJ BL	81
REF	REF	REF	-	3-21000-4	SCR, SHC (10-32x.38) PIVOT BLK	80
-	REF	-	-	455749-1	GUARD, WINDOW	79
REF	-	-	-	679532-1	INSERT, GUARD	78
-	1	-	-	1-465184-0	LUBRICATOR ASSY	77
1	1	1	-	690603-1	SPRING, ASSIST	74
1	1	1	-	23030-1	SCR, SHC (6-32x.25 SL) INS DISC	73
REF	REF	REF	-	458109-1	WASHER, SPECIAL	72
REF	REF	REF	-	690517-1	SPACER	71
-3	-2	-1	U/M	DWG SIZE	PART NO	DESCRIPTION
QTY REQD PER ASSY		PARTS LIST				

QTY	REQD	PER	ASSY	PART NO	DESCRIPTION	ITEM NO	
-1					LEADMAKER		
-2					BENCH MODEL K		
-3					BENCH MODEL G		
REF	REF	REF	-	B	22594-8	NUT, HEX (1/2-20)	70
REF	REF	REF	-	B	240628-1	PLATE, ADJUSTMENT	69
REF	REF	REF	-	B	240626-1	SHAFT, PIVOT	68
REF	REF	REF	-	B	240633-1	BUSHING	67
REF	REF	REF	-	A	455680-1	LEVER, INTERMEDIATE	66
REF	REF	REF	-	B	240629-1	BLOCK, PIVOT	65
REF	REF	REF	-	A	240632-2	SCREW, ADJ FEED ROD	64
REF	REF	REF	-	B	240659-3	PIN, CAM ROLLER	63
REF	REF	REF	-	B	240658-1	ROLLER, CAM	62
REF	REF	REF	-	B	454398-2	ROD, FEED	61
REF	REF	REF	-	A	454178-1	GUIDE, FEED ROD	60
REF	REF	REF	-	C	454220-1	CAP, RAM	59
REF	REF	REF	-	D	454485-1	HOUSING	58
1	1	1	-	B	690542-2	PAWL, FEED	56
REF	REF	REF	-	B	240624-1	PIN, FEED FINGER	55
REF	REF	REF	-	B	691499-1	SPRING, FEED FINGER	54
REF	REF	REF	-	B	690541-1	HOLDER, FEED FINGER	53
REF	REF	REF	-	A	455679-1	LEVER, TERMINAL FEED ARM	52
1	1	1	-	A	811242-2	BUMPER, HOLDDOWN	51
1	1	1	-	A	690753-1	SPACER, TONKER	50
1	-	-	-	B	690602-6	CAM, PRE-FEED 1 5/8 ST	49
-	1	-	-	B	690602-5	CAM, PRE-FEED 1 1/8 ST	48
-	-	1	-	B	690501-4	CAM, POST-FEED 1 5/8 ST	47
1	1	1	-	B	459456-1	APPLICATOR, BASIC (SUBASSY)	46
1	1	1	-	A	690191-1	PLUG, NYLON	45
1	1	1	-	C	455673-1	RAM	44
1	1	1	-	A	690125-1	WASHER, LAMINATED	43
1	1	1	-	A	690124-1	WASHER, RAM	42
1	1	1	-	A	7-21002-9	BOLT, CRIMPER (5/16x1.00)	41
1	1	1	-	A	23241-6	BALL, STEEL	40
1	1	1	-	A	690170-1	SPRING, COMPRESSION	39
1	1	1	-	C	690142-1	DISC, INSULATION	38
1	1	1	-	D	354777-1	WIRE DISC, PLASTIC	37
1	1	1	-	A	22480-5	WASHER, SPRING	36
1	1	1	-	B	690212-1	POST, RAM	35
1	1	1	-	B	690786-5	SUPPORT, TERMINAL	34
REF	REF	REF	-	D	455675-1	PLATE, BASE	33
1	1	1	-	A	690432-3	SCREW, ADJUSTMENT	32
REF	REF	REF	-	B	455689-1	BLOCK, STRIP GUIDE ADJ	30
1	1	1	-	C	455671-1	PLATE, STRIP GUIDE	29
1	1	1	-	C	1-455888-0	SPACER, FRONT SHEAR DEP	28
2	2	2	-	A	1-22284-0	SPRING, DRAG	27
1	1	1	-	B	690546-1	LEVER, DRAG RELEASE	26
1	1	1	-	B	240792-1	DRAG, TERMINAL	25
1	1	1	-	D	7-690504-5	GUIDE, STRIP (REAR)	24
1	1	1	-	A	690438-1	GUIDE, STRIP (FRONT)	23
-	-	1	-	B	690472-2	STRIPPER	22
REF	REF	REF	-	A	4-22284-9	SPRING, FEED RETURN	21
1	1	-	-	A	679218-1	STRIPPER WIRE STOP ASSY	20
1	1	-	-	B	458949-1	STRIPPER	19
1	1	1	-	C	2-455889-0	DEPRESSOR, SHEAR (FRONT)	5
1	1	1	-	B	238011-7	SPACER, BLOCK CRIMPER	4
1	1	1	-	C	5-683454-4	CRIMPER, INSULATION	3
1	1	1	-	C	455888-1	SPACER, CRIMPER	2
1	1	1	-	C	1-456400-0	CRIMPER, WIRE	1
-3	-2	-1	U/M	DWG SIZE	PART NO	DESCRIPTION	
QTY REQD PER ASSY		PARTS LIST					

DIMENSIONS IN INCHES. DO NOT SCALE PRINT. TOLERANCES UNLESS OTHERWISE SPECIFIED.		MATERIAL LIST	
DR	J. BAKER	HT TR	FIN
CHK	C. ERISMAN		
NAME: SIDE FEED HDM APPLICATOR		MACHINE REF: MINI APPL	
SCALE: -	DWG NO: 680292	SHEET REV: 1 OF 1 A	

THIS DRAWING IS A CONTROLLED DOCUMENT FOR AMP INCORPORATED. IT IS SUBJECT TO CHANGE AND THE CONTROLLING ENGINEERING ORGANIZATION SHOULD BE CONTACTED FOR THE LATEST REVISION.

THIS INFORMATION IS CONFIDENTIAL AND IS DISCLOSED TO YOU ON CONDITION THAT NO FURTHER DISCLOSURE IS MADE BY YOU TO OTHER THAN AMP PERSONNEL WITHOUT WRITTEN AUTHORIZATION FROM AMP INCORPORATED, HARRISBURG, PA.