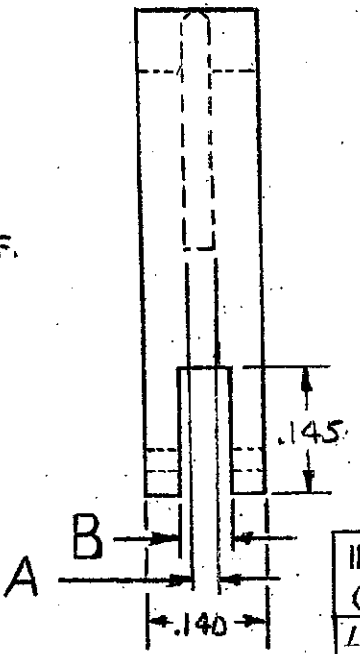
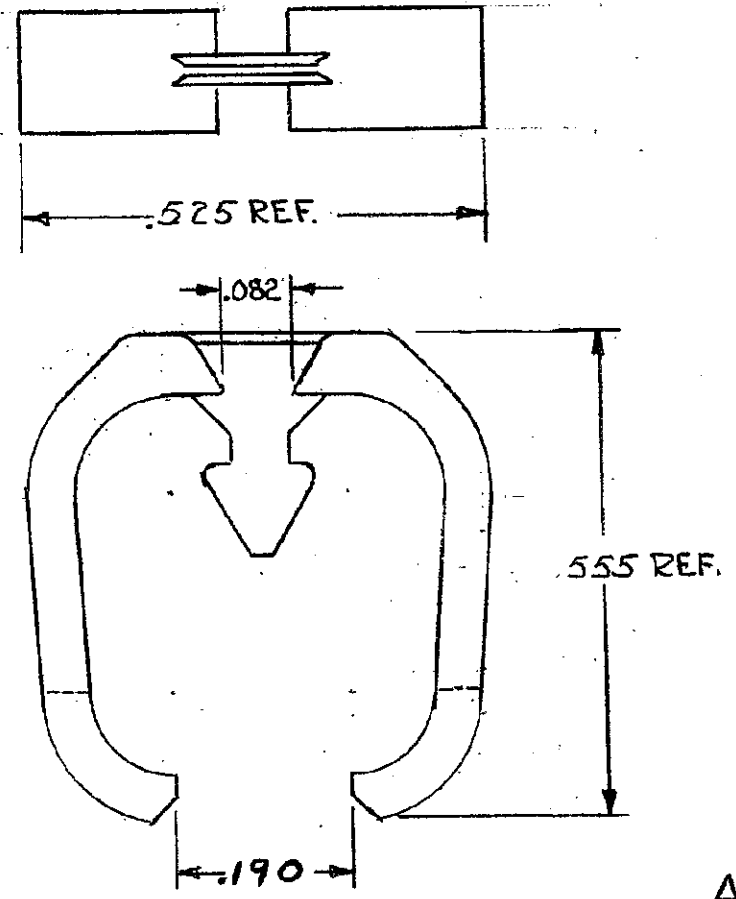


DRAWING MADE IN THIRD ANGLE PROJECTION

© COPYRIGHT 1974 BY AMP INCORPORATED, HARRISBURG, PA.  
 ALL INTERNATIONAL RIGHTS RESERVED. AMP INCORPORATED PRODUCTS  
 COVERED BY U. S. AND FOREIGN PATENTS AND/OR PATENTS PENDING.

Unpublished copy not to be reproduced  
 without written permission of AMP Incorporated.

		REVISIONS			
REV	ZONE	LTR	DESCRIPTION	DATE	APPROVED
0			RELEASED 5193-324-1	m.s.	4-28-75
01			ADDED - 2 WAS 5193-324-2 4517	7-2-75	m.s. D.R.
A			REVISED 5843	m.s.	1-17-77
B			REV PER AD4842	8/90	CP/HWR
C			REV PER EC 0320-209-97	7-1-77	NS



OBSOLETE

INTERCONTACT KEY FOR .100 & CONN.; USE INSERTION TOOL 91081-2	.040	.033 .028	530286-3
INTER CONTACT KEY FOR .125, .150 & .156 & CONN.; USE INSERTION TOOL 91081-1	.050	.048 .043	530286-2
INTER CONTACT KEY FOR .100 & CONN.; USE INSERTION TOOL 91081-2	.040	.033 .028	530286-1

REMARKS		"B"	"A"	PART NO
UNLESS OTHERWISE SPECIFIED DIMENSIONS ARE IN INCHES. TOLERANCES ON: DECIMALS ± ANGLES ±		AMP INCORPORATED Harrisburg, Pa.		
CONTRACT NO		DR <i>Amabile</i> 12-12-74 CHK <i>Amabile</i> 4-28-75 APPD <i>Kaufman</i> 4-28-75 APPD <i>Sholima</i> 4/29/75		
MATERIAL		NAME		
NYLON.		KEYING PLUG, TWIN LEAF CONNECTOR.		
FINISH		SIZE	CODE IDENT-NO	DRAWING NO
		B	00779	530286
OTHER APPD		SCALE	SHEET 1 OF 1	