

PART NUMBER	REV	FIRST USED	TERMINATOR	FEED TYPE	DESCRIPTION
1339565-1	A		BENCH & LEADMAKER	MECH POST FEED	HD-I APPLICATOR
7-1339565-1	A		BENCH & LEADMAKER	MECH POST FEED	-1 AND SPARE PARTS
7-1339565-7	A				SPARE PARTS KIT

CRIMP DATA (AMP TERMINAL)

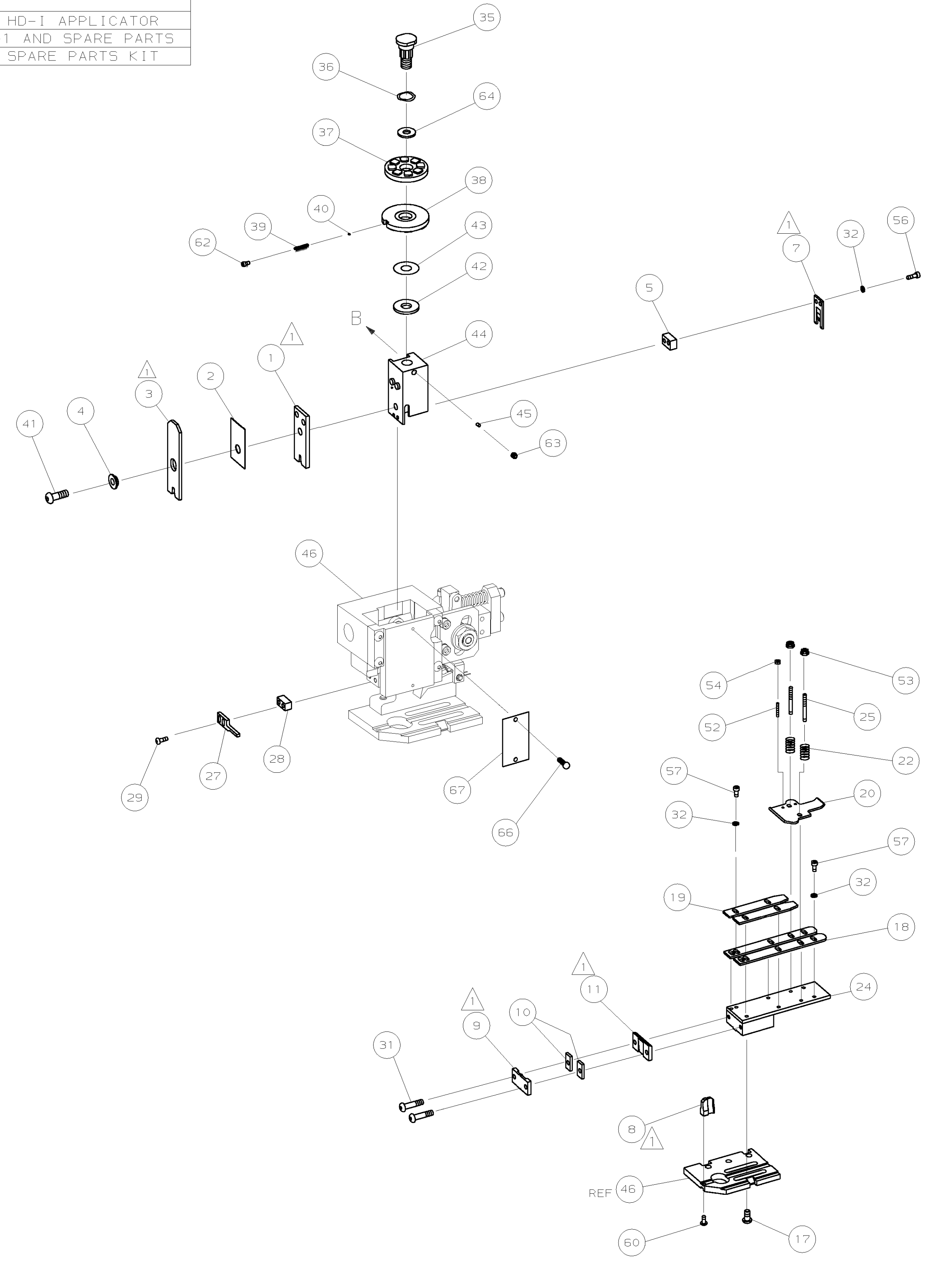
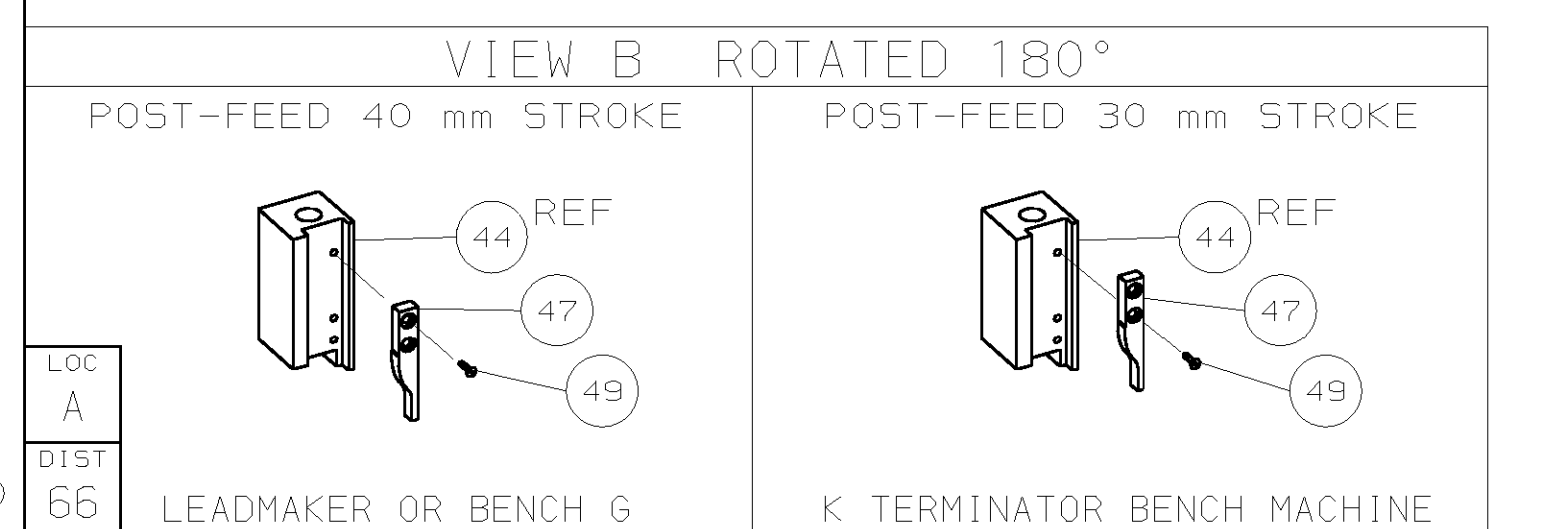
CRIMP	SIZE	TYPE	RANGE
WIRE	3.05 [.120 IN]	F	0.50-1.00mm ²
INSUL	3.94 [.155 IN]	F	2.54-3.43 [.100-.135 IN]

WIRE STRIP LENGTH	APPL INSTRUCTION
3.20 [.125 IN]	408-8323

TERMINAL APPL SPEC	FEED
114-2084	12.80 [.504 IN]

WIRE SIZE	CRIMP HEIGHT	PIN PN & LENGTH [IN]
1.00mm ²	1.65 ± 0.05 [.065 ± .002 IN]	9-354778-5 [.2970]
0.75mm ²	1.58 ± 0.05 [.062 ± .002 IN]	354779-2 [.3000]
0.50mm ²	1.50 ± 0.05 [.059 ± .002 IN]	1-354779-0 [.3040]

- RECOMMENDED SPARE PARTS.
- GREASE RAM, CAM, CAM FOLLOWER AND FEED ROD LIGHTLY.
 - LUBRICATE DAILY PER THE APPLICATOR INSTRUCTION SHEET SUPPLIED WITH THE APPLICATOR.



QTY	REV	PART NO	DESCRIPTION	ITEM NO
-	1	1	1339565 PRINT, APPLICATOR LOG SHEET	73
-	1	1	1338705-2 DOCUMENTATION PACKAGE	71
				70
				68
-	1	1	461264-1 PLATE, IDENTIFICATION	67
-	2	2	21017-2 SCR,DRIVE (#2X.19) ID PLATE	66
				65
-	1	1	986950-1 WASHER, FLAT PRECISION	64
-	1	1	3-18031-0 SCR,SKT SET (M6X6) RAM	63
-	1	1	18023-9 SCR,SKT CAP (M4X6) CP D5C	62
				61
-	1	1	18024-7 SCR,BHC (M4X10) ANVIL	60
				59
				58
-	6	6	1-18023-0 SCR,SHC (M4X8) STRIP GUIDE	57
-	2	2	18023-9 SCR,SHC (M4X6) SLUG BLADE	56
				55
-	2	2	18029-1 NUT,HEX (M3) DRAG	54
-	2	2	986965-1 NUT,HEX SL (M4) DRAG STUD	53
-	2	2	2-18032-2 SCR,SKT SET (M3X10) DRAG	52
				51
				50
-	1	1	18024-3 SCR,BHC (M3X10) CAM	49
				48
-	1	1	1338676-1 CAM, POST-FEED 30 & 40 mm ST	47
-	1	1	1338662-2 APPLICATOR, BASIC (SUBASSY)	46
-	1	1	690191-1 PLUG, NYLON	45
-	1	1	1320998-1 RAM	44
-	1	1	690125-1 WASHER, LAMINATED	43
-	1	1	690124-1 WASHER, RAM	42
-	1	1	2-18024-6 SCREW,BHC (M8X25) CRIMPER	41
-	1	1	23241-1 BALL, STEEL	40
-	1	1	2-22278-7 SPRING, COMPRESSION	39
-	1	1	1320922-1 DISC, INSULATION	38
-	1	1	354777-1 WIRE DISC, PLASTIC	37
-	1	1	22480-5 WASHER, SPRING	36
-	1	1	690212-1 POST, RAM	35
				34
				33
-	8	8	18025-2 WASHER,LOCK (M4) SHEAR BL	32
-	2	2	1-18024-0 SCR,BHC (M4X20) SHEAR PL	31
				30
-	2	2	18024-8 SCR,BHC (M4X12) STRIPPER	29
-	1	1	3-690451-2 SPACER, STRIPPER	28
-	1	1	240639-1 STRIPPER	27
				26
-	2	2	1320906-1 DRAG, STUD	25
-	1	1	1320995-2 STRIP GUIDE	24
				23
-	2	2	4-22281-1 SPRING, DRAG	22
				21
-	1	1	1338665-1 DRAG, STOCK	20
-	2	2	1338664-1 GUIDE, UPPER STRIP	19
-	2	2	1338663-2 GUIDE, LOWER STRIP	18
-	4	4	1-18024-8 SCR,BHC (M6X12) STRIP GD PL	17
				16
				15
				14
				13
				12
-	1	1	691901-2 PLATE, REAR SHEAR	11
-	2	2	1-240645-6 SPACER, SHEAR PLATE	10
-	1	1	690783-2 PLATE, FRONT SHEAR	9
-	1	2	1333220-6 ANVIL	8
-	1	1	691157-3 BLADE, SLUG	7
				6
-	1	1	2-240641-8 SPACER, SLUG BLADE	5
-	1	1	238009-1 SPACER, BLOCK CRIMPER	4
-	1	2	1-456134-2 CRIMPER, INSULATION	3
-	1	1	455888-2 SPACER, CRIMPER	2
-	1	2	456409-2 CRIMPER, WIRE	1
-	77	-71	-1	

QTY REQD PER ASSY	PARTS LIST	MATL	HT TR	FIN
DIMENSIONS: mm (INCHES) MATL - HT TR - FIN -				
DO NOT SCALE PRINT.				
TOLERANCES UNLESS OTHERWISE SPECIFIED:				
1 PLC DEC ±				
2 PLC DEC ±				
3 PLC DEC ±				
ANGLES ±				
SURF TEXTURE: ✓				
REMOVE BURRS, BREAK SHARP EDGES RO.3R MAX				
DR M. CLIFFORD		APP 17MAY01		FIN -
CHK -		REL 15-06-01		
		M. CLIFFORD		
NAME END FEED HD-I APPLICATOR MACHINE REF HD-I APPL				
SCALE 1 OF 1 REV A				
DWG NO 1339565 SHEET 1 OF 1				
CUSTOMER AND ASSEMBLY DRAWING				
RESTRICTED TO				

THIS DRAWING IS A CONTROLLED DOCUMENT.

LAYOUT L1339514 SET UP GAGE 458638-3

RELEASABLE FOR PUBLICATION BY AMP INCORPORATED. ALL RIGHTS RESERVED. THIS DRAWING IS UNRELEASABLE.