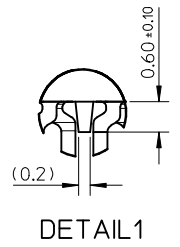
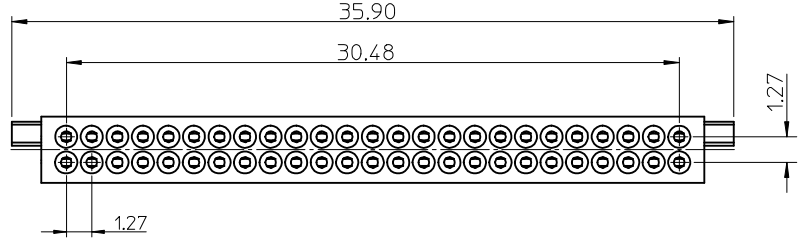
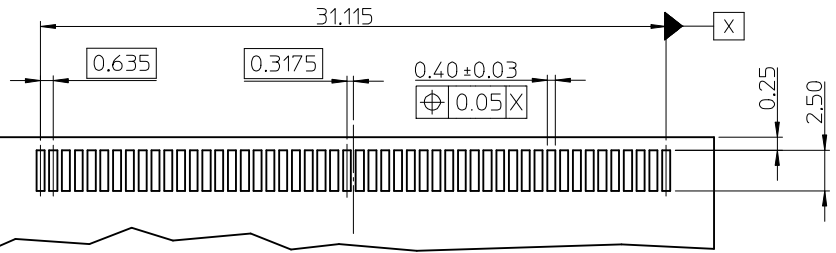
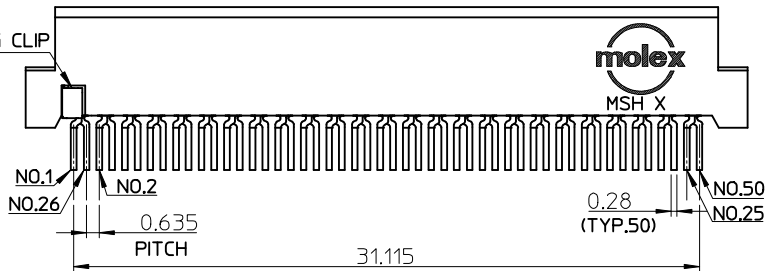
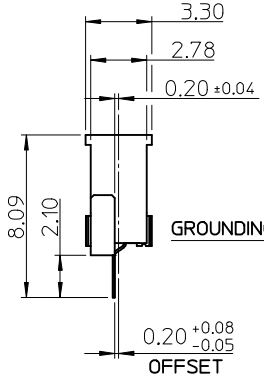
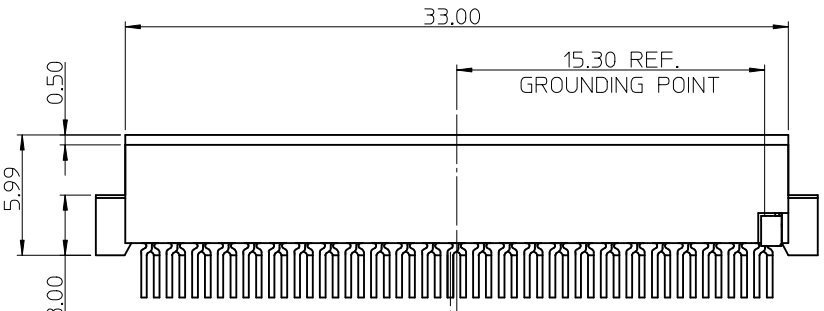


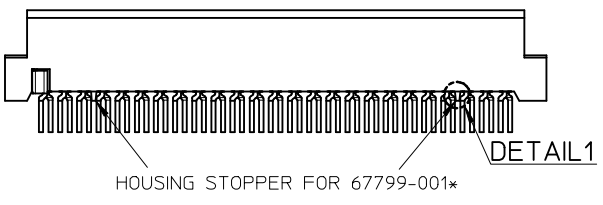
10 9 8 7 6 5 4 3 2 1



NOTE:  
 1.MATERIAL:  
 HOUSING, HIGH TEMPERATURE POLYMER.  
 TERMINAL, COPPER ALLOY.  
 GROUNDING CLIP, COPPER ALLOY.  
 2.FINISH: TERMINAL:  
 NICKEL OVERALL THICKNESS 0.5 MICRON MINIMUM,  
 CONTACT AREA(SEE TABLE):  
 a. SELECTIVE GOLD 0.1 MICRON MINIMUM OVER PALLADIUM/NICKEL 0.5 MICRON MINIMUM,  
 b. SELECTIVE GOLD 0.75 MICRON MINIMUM OVER NICKEL 0.5 MICRON MINIMUM (FOR P/N:67799-0008),  
 SOLDER AREA:(SEE TABLE)  
 a.MATTE TIN /TIN-LEAD 5.0 MICRON MINIMUM  
 b.GOLD FLASH 0.05 MICRON MINIMUM,  
 GROUNDING CLIP:  
 GOLD FLASH OVERALL OVER NICKEL 1.25 MICRON MINIMUM.  
 3.TERMINAL COPLANARITY 0.08mm MAXIMUM.  
 4.PRODUCT SPECIFICATION: PS-67799-001.  
 5.PACKAGE: PK-67799-001.  
 6.GROUNDING CLIP CONDUCTS WITH TERMINAL NO.1, NO.26.



PLATING TYPE IN SOLDER TAIL	MATTE TIN PLATING		GOLD FLASH PLATING		CONTACT AREA: 30U" GOLD SOLDER TAIL: GOLD FLASH	
HOUSING STOPPER	WITHOUT	WITH	WITHOUT	WITH	WITHOUT	WITH
MATERIAL NO.	67799-0004	67799-0014	67799-0007	67799-0017	67799-0008	67799-0018



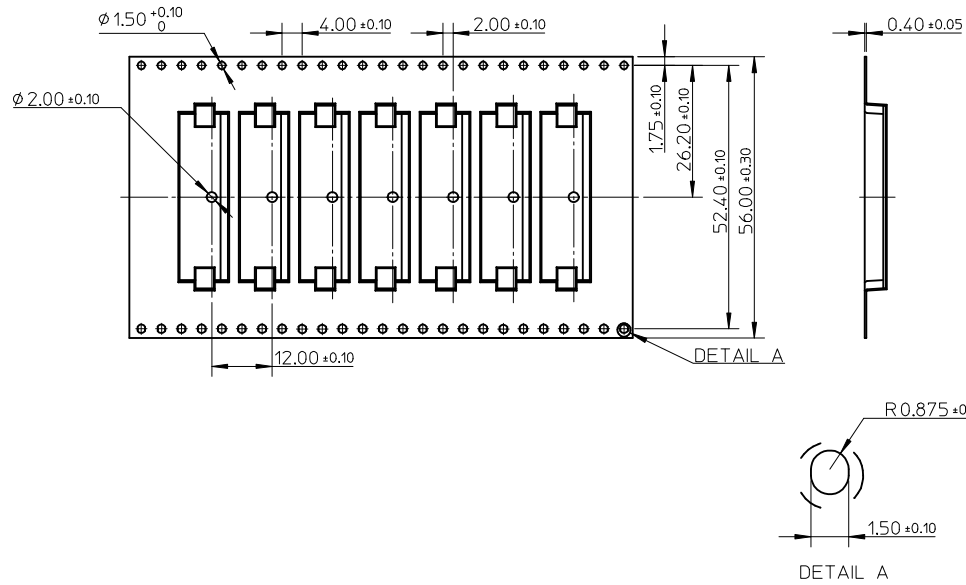
REVISED CARRIER TAPE	QUALITY SYMBOLS
EC NO: S2014-0266	▽ F <sub>1</sub> = 0
DRWN: JZENG	▽ F <sub>2</sub> = 0
CHKD: JIAN02	▽ F <sub>3</sub> = 0
APPR: KHLIM	
REV L1	

GENERAL TOLERANCES (UNLESS SPECIFIED)	DIMENSION STYLE
	MM ONLY
4 PLACES ± --- ± ---	DRAWN BY BRAD
3 PLACES ± --- ± ---	DATE 2003/02/20
2 PLACES ± 0.25 ± ---	CHECKED BY WILSON
1 PLACE ± 0.25 ± ---	DATE 2003/02/20
0 PLACE ± ±	APPROVED BY AYIN
	DATE 2012/10/26
ANGULAR ± 3 °	MATERIAL NO.
DRAFT WHERE APPLICABLE MUST REMAIN WITHIN DIMENSIONS	SEE TABLE

SCALE 1:1	DESIGN UNITS METRIC	THIRD ANGLE PROJECTION
TITLE	50 CKT CF RECEPTACLE SMT TYPE B, OFFSET 0.20MM	
MOLEX	DOCUMENT NO. SD-67799-004	SHEET NO. 1 OF 2

THIS DRAWING CONTAINS INFORMATION THAT IS PROPRIETARY TO MOLEX INCORPORATED AND SHOULD NOT BE USED WITHOUT WRITTEN PERMISSION

9 8 7 6 5 4 3 2 1



NOTES:

1. MATERIAL: POIYSTYRENE, THICKNESS: 0.40±0.05mm.
2. COMPONENT LOAD PER 13" REEL: 1,000 PCS.

SEE SHEET 1 EC NO: SZ014-0266 DRWN: JZENG CHKD: JTAN02 APPR: KHLIM	2013/09/12 2013/10/22 2013/10/28	DESCRIPTION L1	QUALITY SYMBOLS	GENERAL TOLERANCES (UNLESS SPECIFIED)	DIMENSION STYLE	SCALE	DESIGN UNITS	THIRD ANGLE PROJECTION
			$\nabla_A = 0$ $\nabla_G = 0$ $\nabla_P = 0$	mm    INCH 4 PLACES ± --- ± --- 3 PLACES ± --- ± --- 2 PLACES ± 0.25 ± --- 1 PLACE ± 0.25 ± --- 0 PLACE ±     ±	MM ONLY	1:1	METRIC	
			DRAFT WHERE APPLICABLE MUST REMAIN WITHIN DIMENSIONS	DRAWN BY    DATE BRAD        2003/02/20 CHECKED BY    DATE WILSON        2003/02/20 APPROVED BY    DATE AYIN            2012/10/26	TITLE	50 CKT CF RECEPTACLE SMT TYPE B, OFFSET 0.20MM		
			MATERIAL NO. SEE SHEET 1	DOCUMENT NO. SD-67799-004	SHEET NO. 2 OF 2	<b>molex</b>		