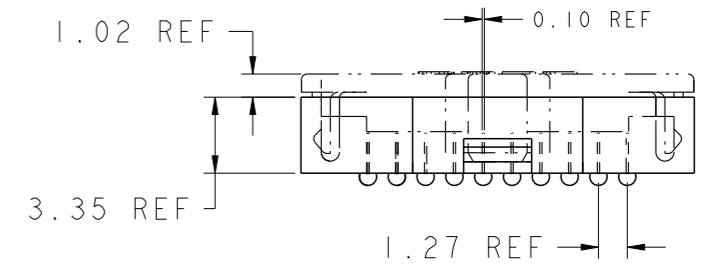
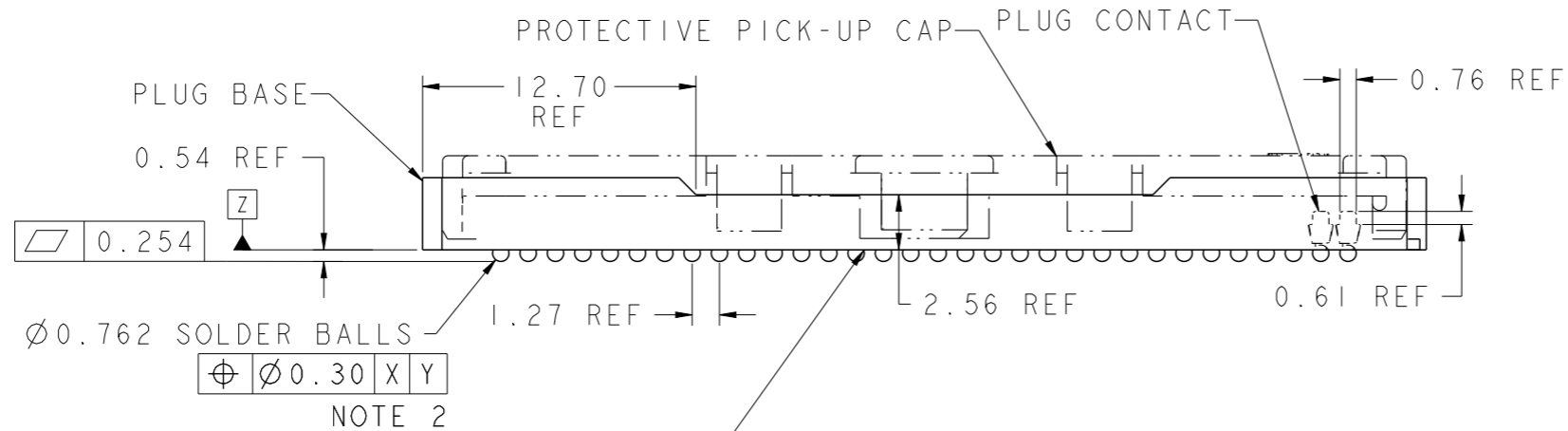
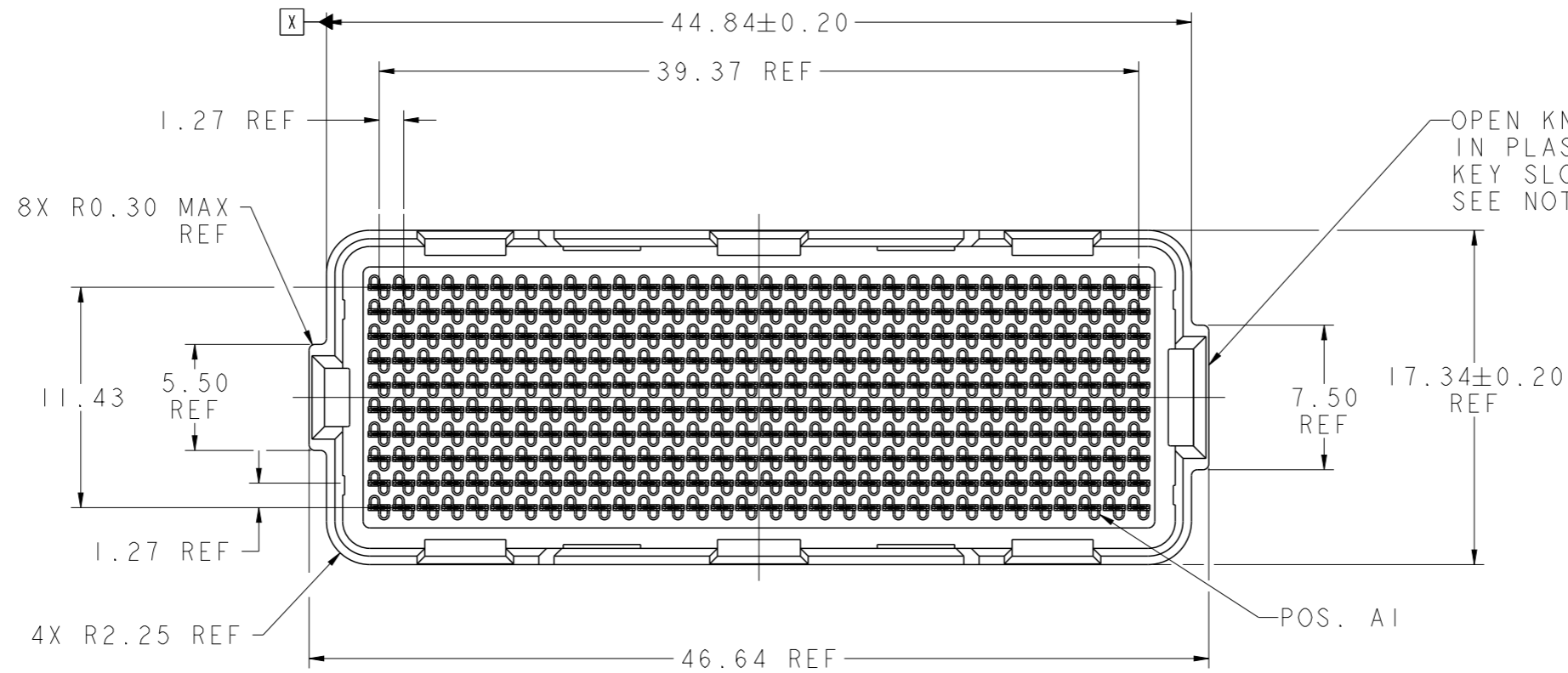


PRODUCT NUMBER

SEE SHEET 5



CONTINUOUS OPEN KNIT LINE CRACKS (TRAVERSING THE ENTIRE BODY LENGTH OF THE CONNECTOR) WHICH CAUSE CRITICAL-TO-FUNCTION DIMENSIONAL CHANGES THAT AFFECT THE CONNECTORS MECHANICAL ALIGNMENT FEATURES ARE NOT PERMISSIBLE. SEE NOTE 4.

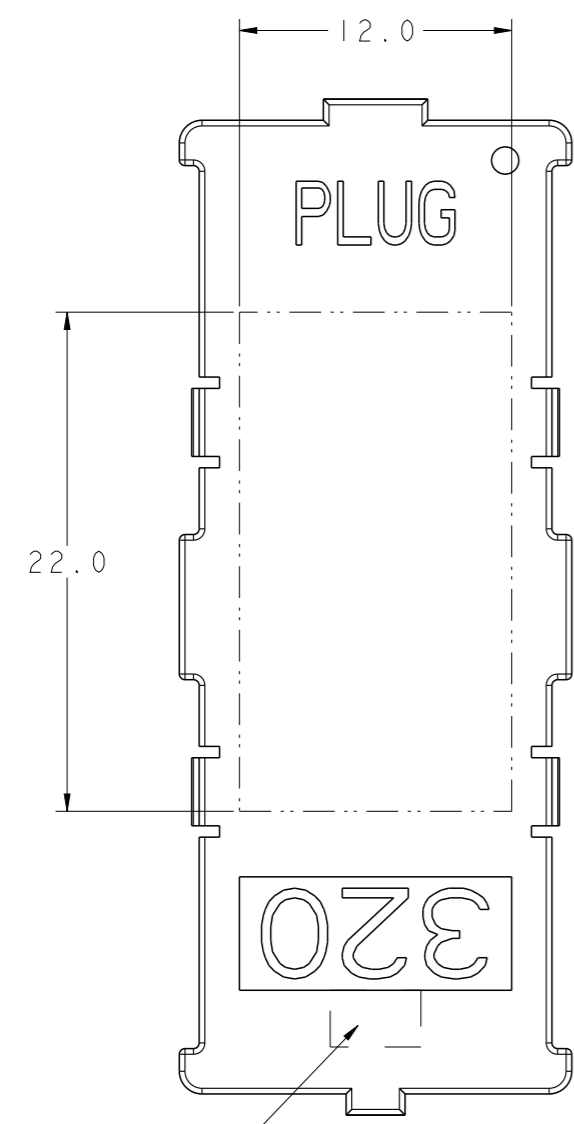
spec ref	-	dr	Dave Horchler	2013/01/22	projection		size	A3	scale	3:1
tolerance std	ASME Y14.5	eng	M Srinivasan	2013/07/15			mm			
	TOLERANCES UNLESS OTHERWISE SPECIFIED	chr	-	-					ecn no	ELX-V-15184-1
		appr	R Marshall	2013/07/15	product family	MEG-ARRAY			rel level	Released
surface	✓ linear								dwg no	10123981
										rev
										B
ASME Y14.5	angular								Product - Customer Drw	sheet 1 of 5



Copyright FCI.

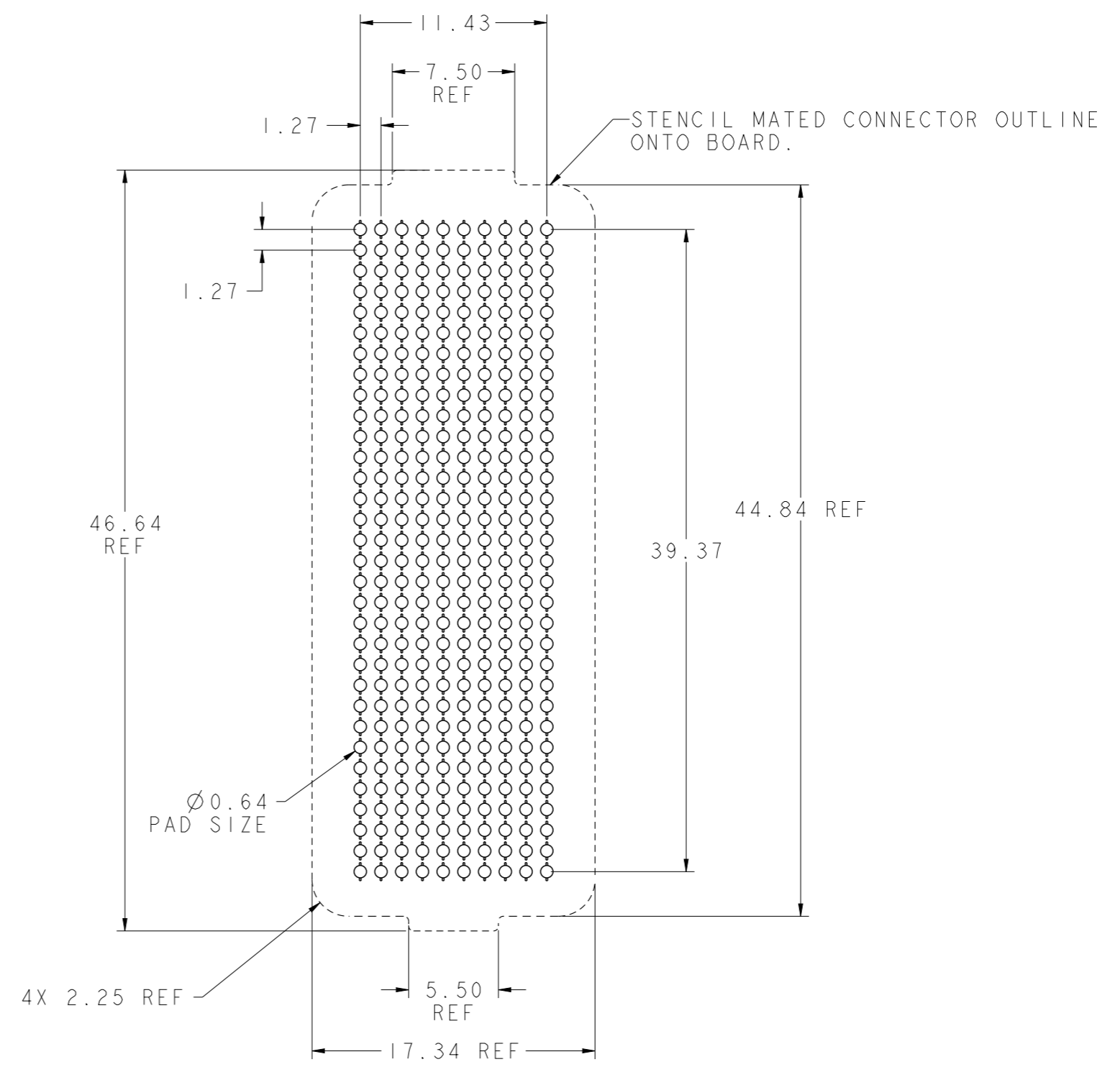
PRODUCT NUMBER

SEE SHEET 5



NOTE 6

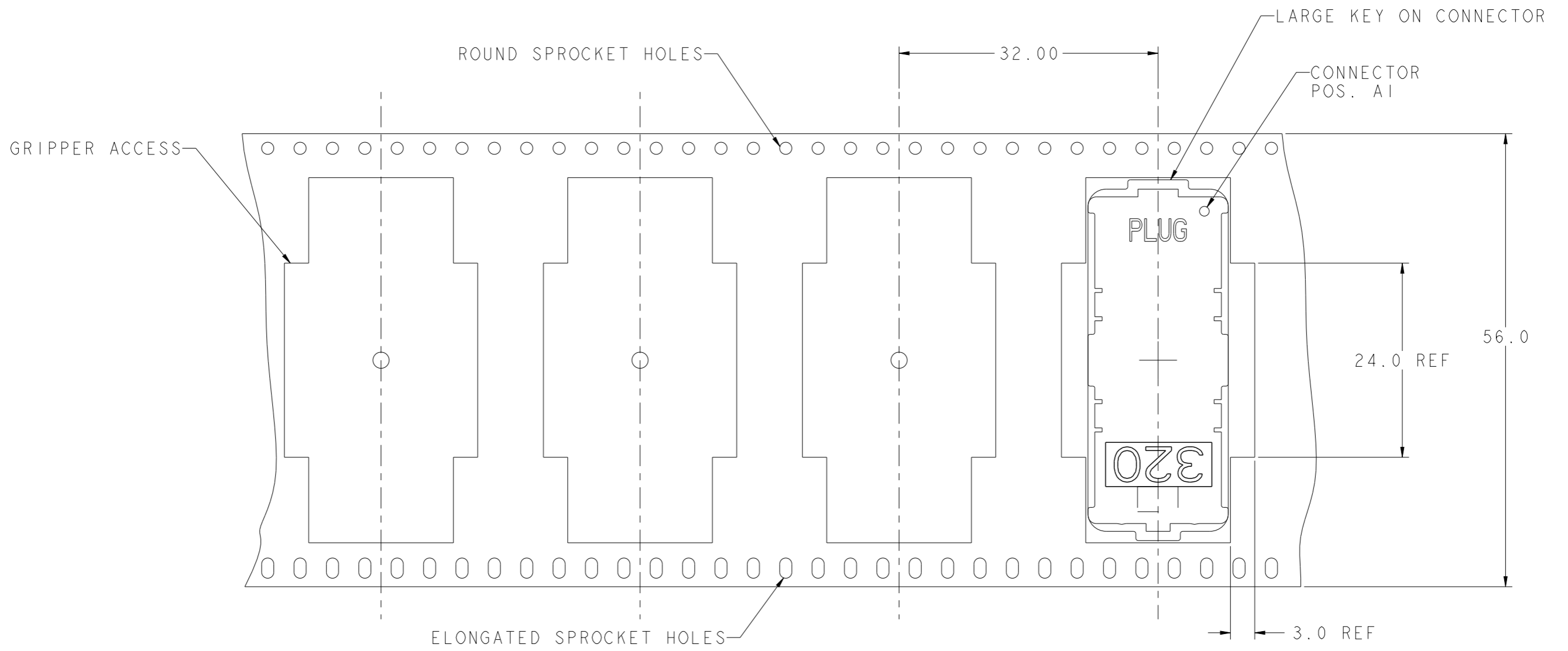
FLAT AREA FOR PICK-UP CAP



BOARD PATTERN

spec ref	-			dr	Dave Horchler	2013/01/22	projection	mm	size	A3	scale	3:1
tolerance std	ASME Y14.5			eng	M Srinivasan	2013/07/15			ecn no		ELX-V-15184-1	
TOLERANCES UNLESS OTHERWISE SPECIFIED			chr	-	-	product family			MEG-ARRAY	rel level		Released
surface		linear	0.X ±0.3		0mm PLUG ASSEMBLY			dwg no 10123981	rev		B	
			0.XX ±0.13		10 x 32 = 320 POSITIONS							
		0.XXX ±0.051		www.fci.com	cat. no.		Product - Customer Drw			sheet 2 of 5		
		angular	0° ±0°				PDS: Rev :B			STATUS:Released		

PRODUCT NUMBER
SEE SHEET 5



DIE - REEL DIRECTION



TAPE & REEL PACKAGING
PER EIA 481 - 3
SCALE NONE

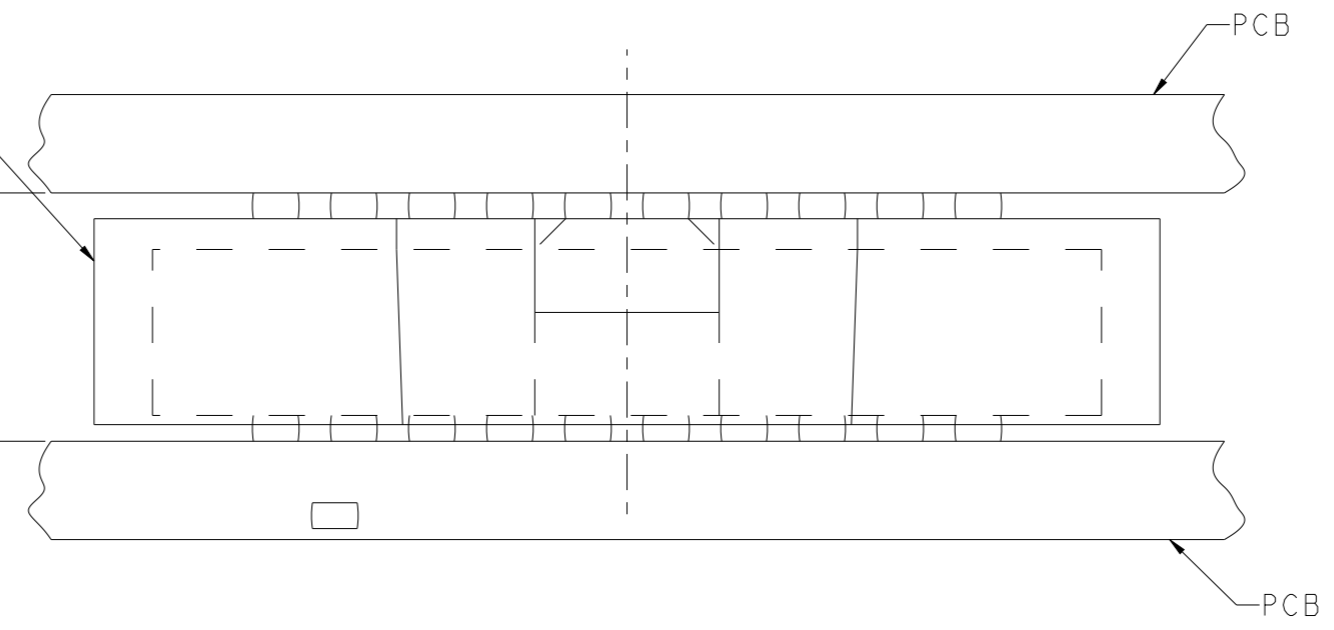
spec ref -		dr Dave Horchler	2013/01/22	projection	mm	size A3	scale 3:1
tolerance std ASME Y14.5		eng M Srinivasan	2013/07/15			ecn no ELX-V-15184-1	
TOLERANCES UNLESS OTHERWISE SPECIFIED		chr -	-			product family MEG-ARRAY	rel level Released
surface ✓	ASME Y14.5	linear	0.X ±0.3		0mm PLUG ASSEMBLY 10 x 32 = 320 POSITIONS	dwg no 10123981	rev B
			0.XX ±0.13				
			0.XXX ±0.051				
	angular	0° ±0°	www.fci.com	cat. no.	Product - Customer Drw	sheet 3 of 5	

PRODUCT NUMBER

SEE SHEET 5

PLUG ASSY
P/N 10123981-XXX

DIM "A" REF
MATED HEIGHT
AFTER REFLOW
SEE NOTE 3



MATED HEIGHT AFTER REFLOW IS BASED ON Ø0.64mm PAD (METAL-DEFINED)
AND 0.13mm SOLDER PASTE STENCIL THICKNESS. SEE NOTE 3

END VIEW - MATED CONNECTORS
SCALE NONE



Copyright FCI.

spec ref -		dr	Dave Horchler	2013/01/22	projection	mm	size	A3	scale	3:1
tolerance std	TOLERANCES UNLESS OTHERWISE SPECIFIED	eng	M Srinivasan	2013/07/15		← →	ecn no	ELX-V-15184-1		
ASME Y14.5		chr	-	-				product family	MEG-ARRAY	rel level
surface		linear	0.X	±0.3		0mm PLUG ASSEMBLY		dwg no	10123981	
ASME Y14.5	angular	0°	±0°	www.fci.com						

PRODUCT NUMBER	PICK-UP CAP (NATURAL OR BLACK IN COLOR)	CONTACT PLATING AND THICKNESS	SOLDER BALL	NOTES
10123981-002	YES	15u" (.38um) Au	SnPb	
10123981-002LF	YES	15u" (.38um) Au	LEAD FREE	4 AND 5
10123981-092	YES	15u" (.38um) GXT	SnPb	
10123981-092LF	YES	15u" (.38um) GXT	LEAD FREE	4 AND 5
10123981-102	YES	30u" (.76um) Au	SnPb	
10123981-102LF	YES	30u" (.76um) Au	LEAD FREE	4 AND 5
10123981-192	YES	30u" (.76um) GXT	SnPb	
10123981-192LF	YES	30u" (.76um) GXT	LEAD FREE	4 AND 5
10123981-202	YES	50u" (1.27um) Au SPECIAL	SnPb	8
10123981-202LF	YES	50u" (1.27um) Au SPECIAL	LEAD FREE	4, 5 AND 8
10123981-292	YES	50u" (1.27um) GXT SPECIAL	SnPb	8
10123981-292LF	YES	50u" (1.27um) GXT SPECIAL	LEAD FREE	4, 5 AND 8
10123981-A02	YES	30u" (.76um) Au SPECIAL	SnPb	CUSTOMER SPECIAL
10123981-A02LF	YES	30u" (.76um) Au SPECIAL	LEAD FREE	CUSTOMER SPECIAL

NOTES:

- ① MATERIAL:
HOUSING: LCP-NATURAL
CONTACT: COPPER ALLOY

PLATING:
CONTACT: 15μ" (0.38μm) GXT OVER Ni UNDERPLATE
SOLDER BALL: LEAD FREE
95.5Sn/4Ag/0.5Cu
- ② SOLDER BALLS WILL NOT HAVE PERFECT SPHERICAL SHAPES DUE TO REFLOW ATTACHMENT.
- ③ MATED HEIGHT EFFECTED BY CUSTOMER'S PCB PAD SIZE, PLATING, SOLDER REFLOW PROFILE, & SOLDER PASTE.
- ④ FOR PROPER APPLICATION FOLLOW FCI APPLICATION SPECIFICATION GS-20-033 LEAD FREE SOLDER BALLS WILL NOT SOLDER PROPERLY IN A LEADED SOLDER PROCESS DUE TO A HIGHER REFLOW TEMPERATURE. LEAD FREE PRODUCT IS THEREFORE NOT BACKWARDS COMPATIBLE WITH LEADED OR SOME SOLDERING APPLICATIONS. REFERENCE FCI APPLICATION SPECIFICATION.
- ⑤ THIS PRODUCT MEETS EUROPEAN UNION DIRECTIVES AND OTHER COUNTRY REGULATIONS AS DESCRIBED IN GS-47-0004 PRODUCT MEETING THIS DIRECTIVE IS IDENTIFIED IN THE LOT CODE NUMBER MARKED ON EACH PART BY HAVING AN "X" IN THE SEVENTH CHARACTER POSITION.
- ⑥ CURRENT COMPANY LOGO TO BE VISIBLE IN APPROXIMATE AREA SHOWN.
- ⑦ SEE PRODUCT SPEC GS-12-100 PER TEST AND PERFORMANCE INFORMATION.
- ⑧ PLATING FOR INDICATED -2XX SERIES NUMBERS MEET THE REQUIREMENTS OF GR-1217-CORE, CENTRAL OFFICE ENVIROMENT, (25 YEARS LIFE EXPECTANCY). THIS SERIES HAS SPECIAL CONTACT GEOMETRY.

spec ref	-	dr	Dave Horchler	2013/01/22	projection	mm	size	A3	scale	3:1	
tolerance std	ASME Y14.5	eng	M Srinivasan	2013/07/15			ecn no	ELX-V-15184-1			
	TOLERANCES UNLESS OTHERWISE SPECIFIED	chr	-	-			product family	MEG-ARRAY	rel level	Released	
surface	linear	appr	R Marshall	2013/07/15			dwg no	10123981		rev	B
	ASME Y14.5	angular	0°	±0°	0mm PLUG ASSEMBLY 10 x 32 = 320 POSITIONS		cat. no.	Product - Customer Drw		sheet 5 of 5	



Copyright FCI.