

**DESIGNED AND DIMENSIONED IN MILLIMETERS[INCHES]
ALL DIMENSIONS REFERENCE**

DO NOT SCALE FROM THIS PRINT

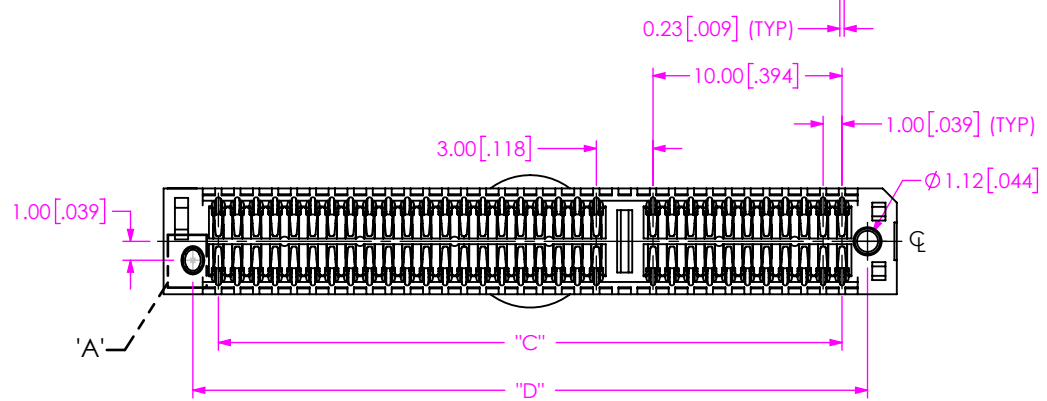
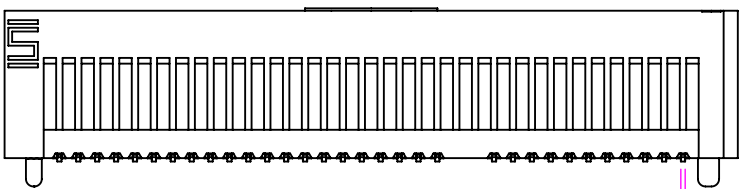
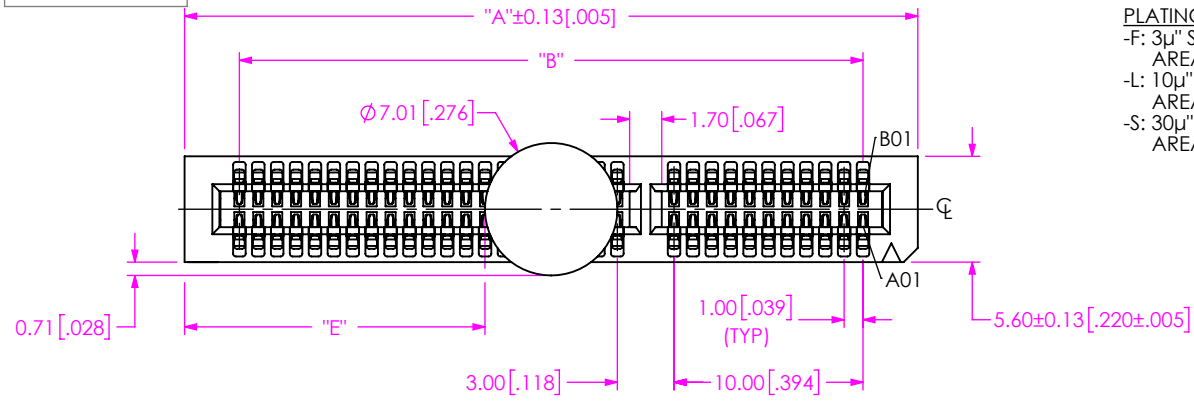


FIG 1
PCIE-G4-04-01-X-DV-A-K SHOWN

- NOTES:
1. MATING CARD MUST HAVE LEAD-IN. SEE SAMTEC FOOTPRINT FOR SPECIFICATIONS.
 2. -01, -04, -08 LANES TAPE & REEL IS STANDARD PACKAGING, -16 LANES TRAY IS STANDARD PACKAGING.
 3. ORDERS WILL BE PACKAGED ACCORDING TO THE SAMTEC PACKAGING EFFICIENCY STANDARDS (SPES) FOUND ON WWW.SAMTEC.COM.
 4. K-DOT PROVIDED AS STANDARD.
 5. PART MUST HAVE EITHER -A OR -WT AS REQUIRED, -A NOT AVAILABLE WITH -WT OPTION.
 6. NOTE DELETED.
 7. ATTACH LABEL TO EACH REEL.

PCIE-G4-XX-XX-X-DV-XX-K-XX

No OF LANES
-01, -04, -08, -16

CARD THICKNESS
-01: FOR 1.57[.062] CARD

PLATING SPECIFICATION
-F: 3µ" SELECTIVE GOLD IN CONTACT AREA, MATTE TIN ON TAIL
-L: 10µ" SELECTIVE GOLD IN CONTACT AREA, MATTE TIN ON TAIL
-S: 30µ" SELECTIVE GOLD IN CONTACT AREA, MATTE TIN ON TAIL

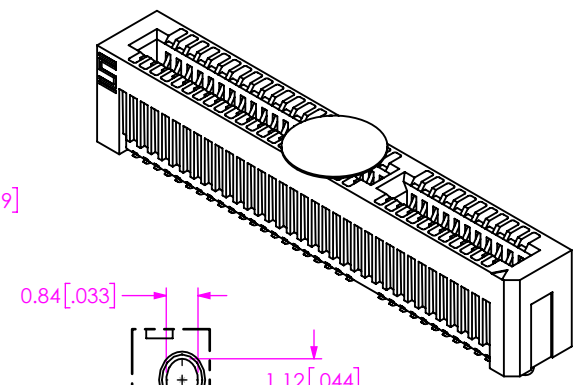
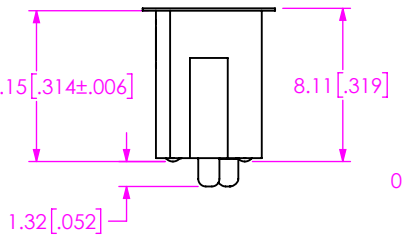
ROW SPECIFICATION
-DV: DOUBLE VERTICAL

PACKAGING
BLANK: TRAY (SEE NOTES 2 & 3)
(ONLY AVAILABLE FOR LANES -16)
-TR: TAPE & REEL (SEE NOTES 2, 3 & 7)
(REQUIRED FOR LANES -01, -04, & -08)
-FR: FULL REEL QTY TAPE & REEL
(SEE NOTES 2, 3 & 7)
(REQUIRED FOR LANES -01, -04, & -08)

PICK & PLACE OPTION
-K: POLYIMIDE FILM PAD
(SEE NOTE 4)

OPTION
-A: ALIGNMENT PIN (SEE FIG 1 & NOTE 5)
-WT: WELD TAB
(SEE FIG 2, SHT 2 & NOTE 5)

■ NOT AVAILABLE WITH -A OPTION.



DETAIL 'A'
SCALE 5 : 1

| No Of LANES | "A" | "B" | "C" | "D" | "E" |
|-------------|---------------|---------------|---------------|---------------|---------------|
| -01 | 24.80 [0.976] | 19.00 [0.748] | 19.00 [0.748] | 21.70 [0.854] | 8.89 [0.350] |
| -04 | 38.80 [1.528] | 33.00 [1.299] | 33.00 [1.299] | 35.70 [1.406] | 15.89 [0.626] |
| -08 | 55.80 [2.197] | 50.00 [1.969] | 50.00 [1.969] | 52.70 [2.075] | 24.39 [0.960] |
| -16 | 88.80 [3.496] | 83.00 [3.268] | 83.00 [3.268] | 85.70 [3.374] | 40.89 [1.610] |

PROPRIETARY NOTE
THIS DOCUMENT CONTAINS CONFIDENTIAL AND PROPRIETARY INFORMATION AND ALL DESIGN, MANUFACTURING, REPRODUCTION, USE, PATENT RIGHTS AND SALES RIGHTS ARE EXPRESSLY RESERVED BY SAMTEC, INC. THIS DOCUMENT SHALL NOT BE DISCLOSED, IN WHOLE OR PART, TO ANY UNAUTHORIZED PERSON OR ENTITY NOR REPRODUCED, TRANSFERRED OR INCORPORATED IN ANY OTHER PROJECT IN ANY MANNER WITHOUT THE EXPRESS WRITTEN CONSENT OF SAMTEC, INC.

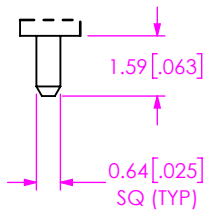
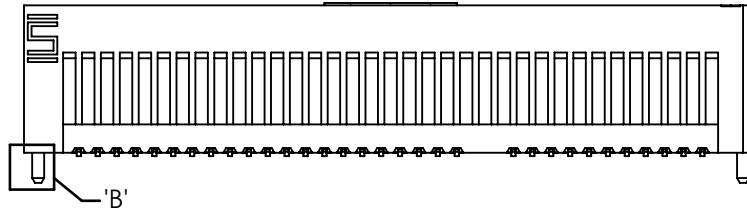
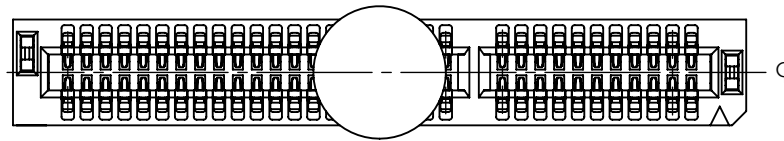
DO NOT SCALE DRAWING
SHEET SCALE: 2:5:1

MATERIAL:
INSULATOR: LCP
CONTACT: COPPER ALLOY
WELD TAB: COPPER ALLOY

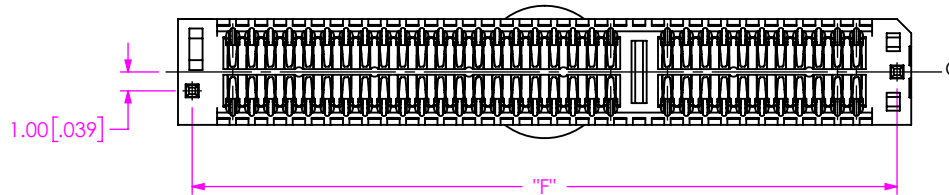
samtec

520 PARK EAST BLVD, NEW ALBANY, IN 47150
PHONE: 812-944-6733 FAX: 812-948-5047
e-Mail info@SAMTEC.com code 55322

DESCRIPTION:
1.00mm DV HIGH SPEED EDGE CARD ASSEMBLY
DWG. NO.
PCIE-G4-XX-XX-X-DV-XX-K-XX
BY: D.SCHMELZ 10/11/2018 SHEET 1 OF 2



DETAIL 'B'
SCALE 5 : 1



| No OF LANES | "F" |
|-------------|---------------|
| -01 | 23.30 [0.917] |
| -04 | 37.30 [1.469] |
| -08 | 54.30 [2.138] |
| -16 | 87.30 [3.437] |

FIG 2
PCIE-G4-04-01-X-DV-WT-K SHOWN
(DIFFERENT AS SHOWN, OTHERWISE SAME AS FIG 1)

PROPRIETARY NOTE

THIS DOCUMENT CONTAINS CONFIDENTIAL AND PROPRIETARY INFORMATION AND ALL DESIGN, MANUFACTURING, REPRODUCTION, USE, PATENT RIGHTS AND SALES RIGHTS ARE EXPRESSLY RESERVED BY SAMTEC, INC. THIS DOCUMENT SHALL NOT BE DISCLOSED, IN WHOLE OR PART, TO ANY UNAUTHORIZED PERSON OR ENTITY NOR REPRODUCED, TRANSFERRED OR INCORPORATED IN ANY OTHER PROJECT IN ANY MANNER WITHOUT THE EXPRESS WRITTEN CONSENT OF SAMTEC, INC.



520 PARK EAST BLVD, NEW ALBANY, IN 47150
PHONE: 812-944-6733 FAX: 812-948-5047
e-Mail info@SAMTEC.com code 55322

DO NOT SCALE DRAWING
SHEET SCALE: 2.5:1

DESCRIPTION:
1.00mm DV HIGH SPEED EDGE CARD ASSEMBLY
DWG. NO.

PCIE-G4-XX-XX-X-DV-XX-K-XX

BY: D.SCHMELZ 10/11/2018 SHEET 2 OF 2